

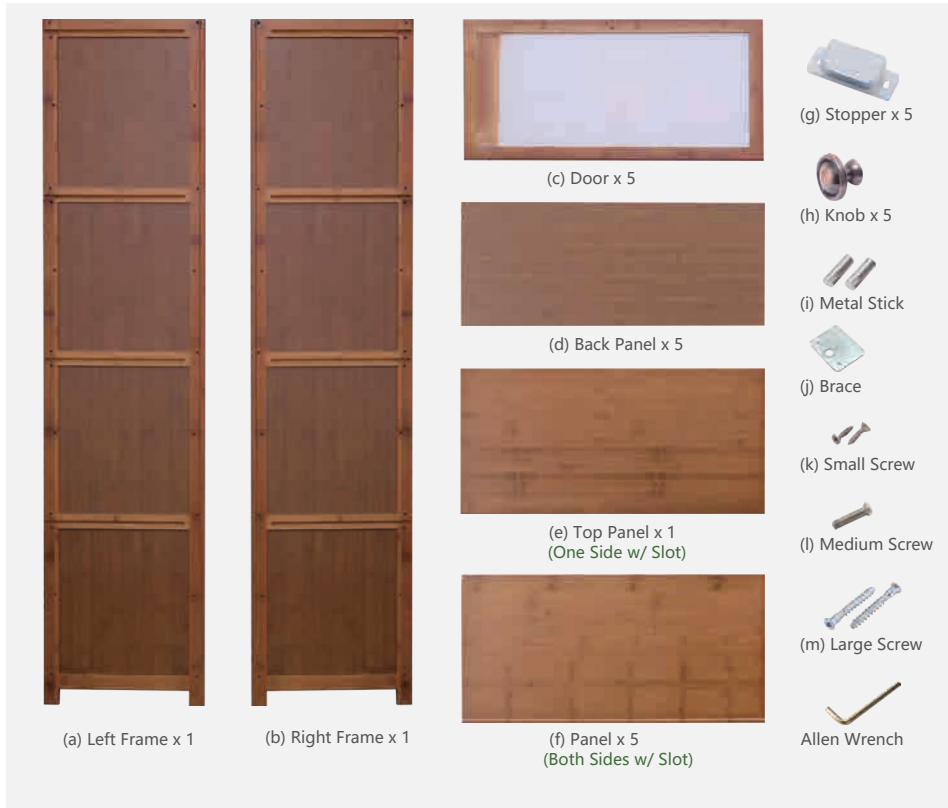
## USER GUIDE

# BOOKSHELF

Natural / Stylish / Unique



## HARDWARE



### ⚠ ATTENTION

- ① Please always read and follow the assembly, maintenance and operating instruction.
- ② Do not discard any of the packaging until you have checked that you have all the parts and pack of fittings.
- ③ Keep children away during assembly. This item contains small parts which can be swallowed by children.
- ④ Wipe frames with water gently, do not use bleach, acid, or other solvents.
- ⑤ Check all hardwares before assembly. Incorrect parts used may lead to damage.



Scan the QR code to view the assembly video.

## ASSEMBLY INSTRUCTIONS

The assembly instructions may vary depending on the number of tiers.



- ① Insert Metal Stick (i) in the pre-drilled hole on Frames (a)(b).



- ② Position Panel (f) and Stopper (g) as picture shown. Secure with Small Screws (k).



- ③ Secure Frame (a) and Panels (f) with Large Screws (m) as picture shown.



- ④ Secure Top Panel (e) with Large Screws (m).

© 2020-2023 by Pundarika LLC - MoNiBloom.com



- ⑤ Insert Back Panels (d) to slot as picture shown.



- ⑥ Position and secure Frame (b) with Large Screws (m)



- ⑦ Install Brace (j) with Small Screws (k).



- ⑧ Install Doors (c), Braces (j), Knobs (h) and Metal Sticks (i) as picture shown.



Use a knife to cut the film along the edge of door

and then tear off it.



Loose screw

Insert metal stick to slot

- ⑩ Install doors to the rack as picture shown.