

ASSEMBLY INSTRUCTION

ASSEMBLY INSTRUCTION

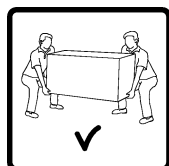
ASSEMBLY TIPS :

- 1.Remove hardware from box and sort by size.
- 2.Please check to see that all hardware and parts are present prior to start of assembly.
- 3.Please follow attached instructions in the same sequence as numbered to assure fast & easy assembly.



Warning !

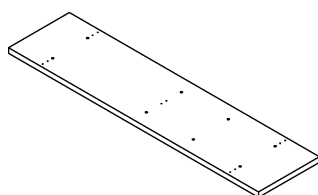
- 1.Don't attempt to repair or modify parts that are broken or defective.Please contact the store immediately.
- 2.This product is for home use only and not intended for commercial establishment.



ASSEMBLY TIME PER UNIT: 40 MINUTES

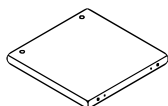
PARTS IDENTIFICATION:

(A) BOTTOM PANEL



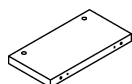
1PC

(B) LOWER DIVIDER PANEL



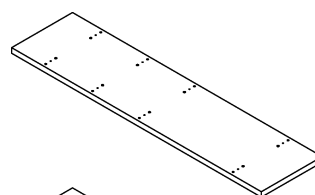
4PCS

(C) UPPER DIVIDER PANEL



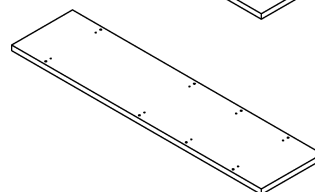
8PCS

(D) CROSS PANEL



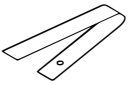



2PCS

(E) TOP PANEL

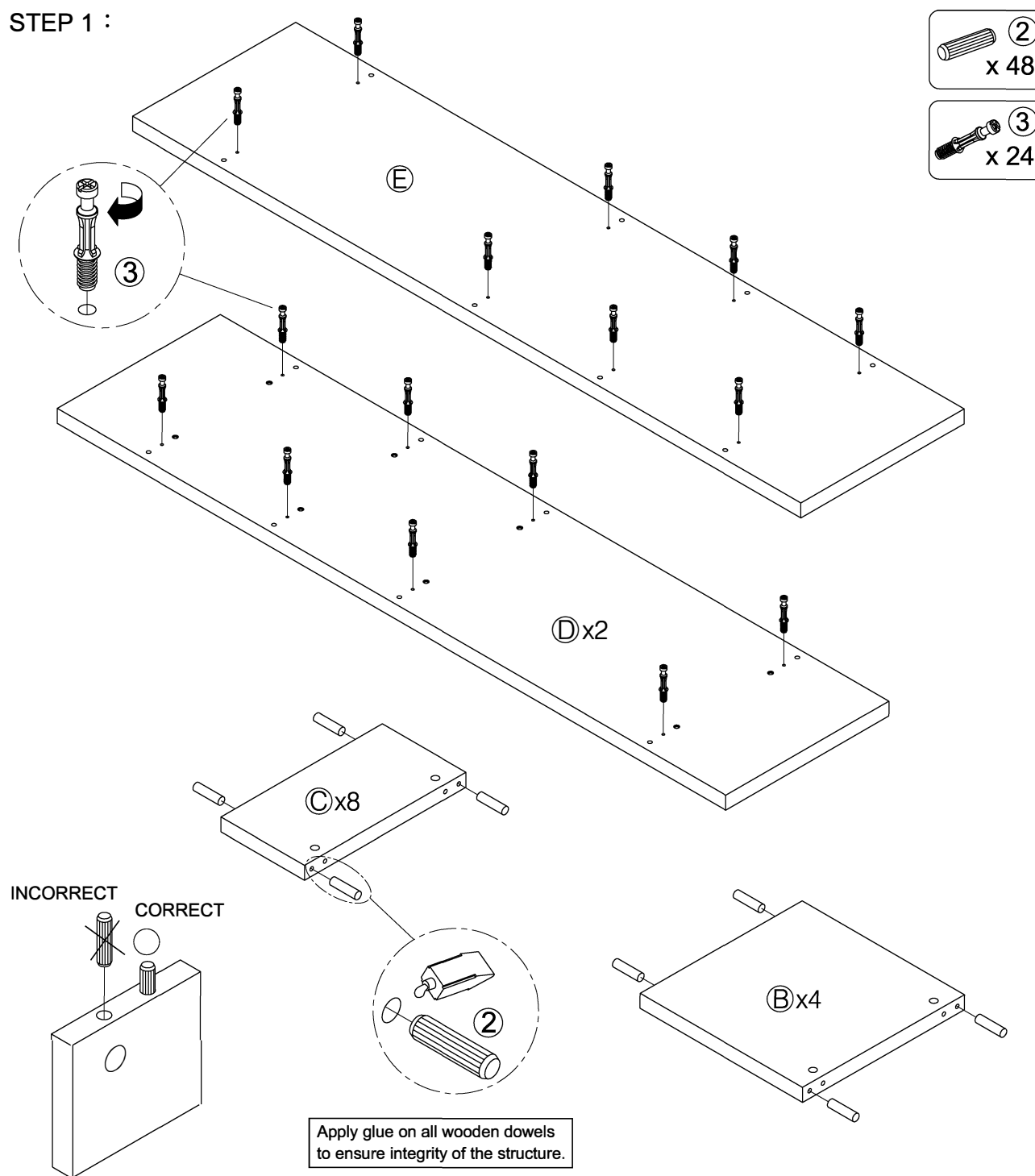


1PC

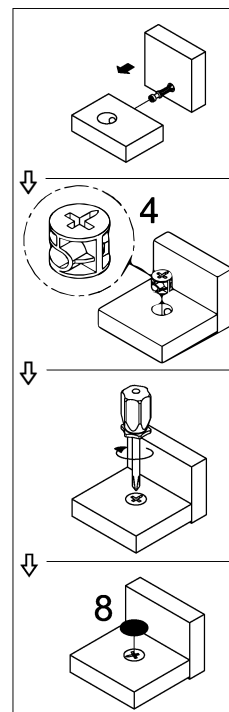
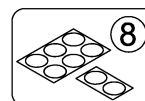
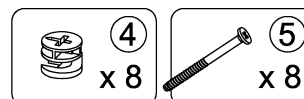
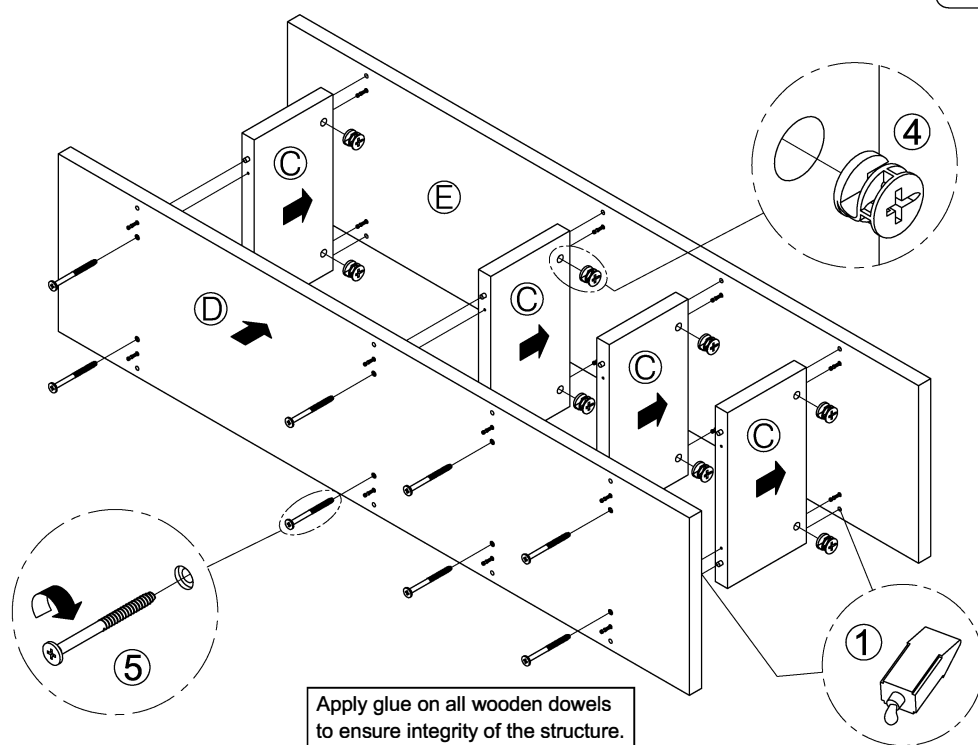
Z	HARDWARE PACKAGE						
NO	DESCRIPTION	FIGURE	Q'TY	NO	DESCRIPTION	FIGURE	Q'TY
1	GLUE 40g		1PC	5	BOLT \varnothing 9.5x55mm FOR BOTTOM PANEL		24PCS
2	WOODEN DOWEL \varnothing 8x30mm		48PCS	6	FOOT 50x50x18mm		5PCS
3	CAM BOLT \varnothing 7x35.5mm		24PCS	7	SCREW \varnothing 5x22.5mm FOR FOOT		10PCS
4	CAM LOCK \varnothing 15x12mm		24PCS	8	STICKER \varnothing 20mm		4PCS

Z	HARDWARE PACKAGE						
NO	DESCRIPTION	FIGURE	Q'TY	NO	DESCRIPTION	FIGURE	Q'TY
9	ANTI-TIP STRAP 170x15mm		2PCS	11	LONG SCREW ø4x25mm		2PCS
10	WALL PLUG 6x30mm		2PCS	12	SCREW ø4x16mm		2PCS

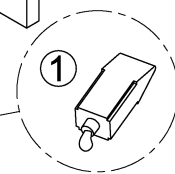
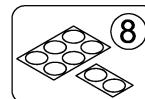
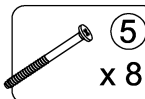
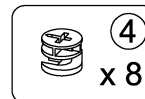
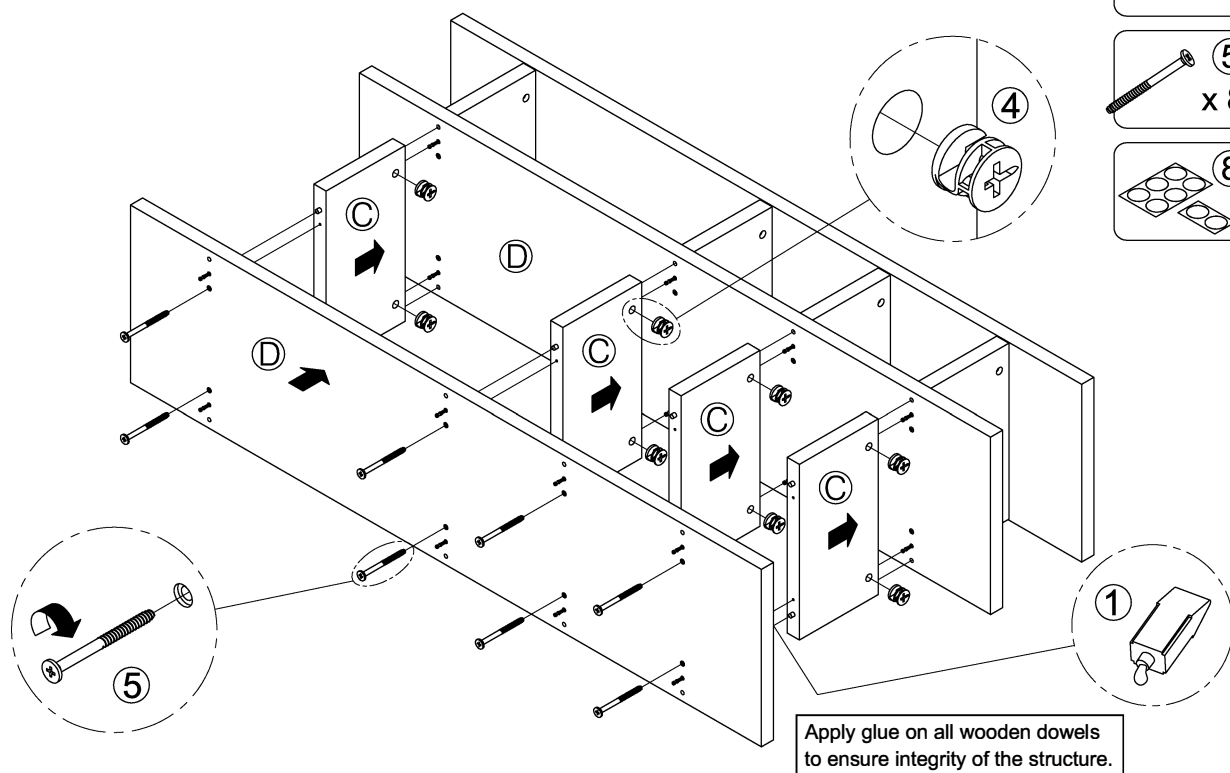
STEP 1 :



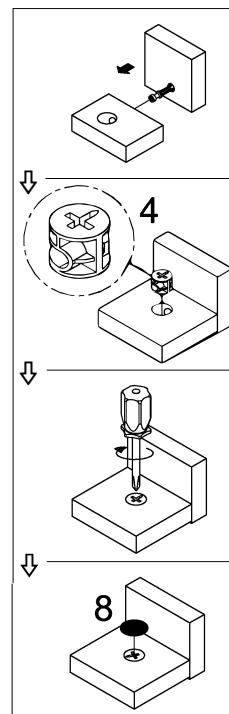
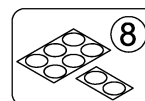
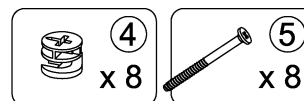
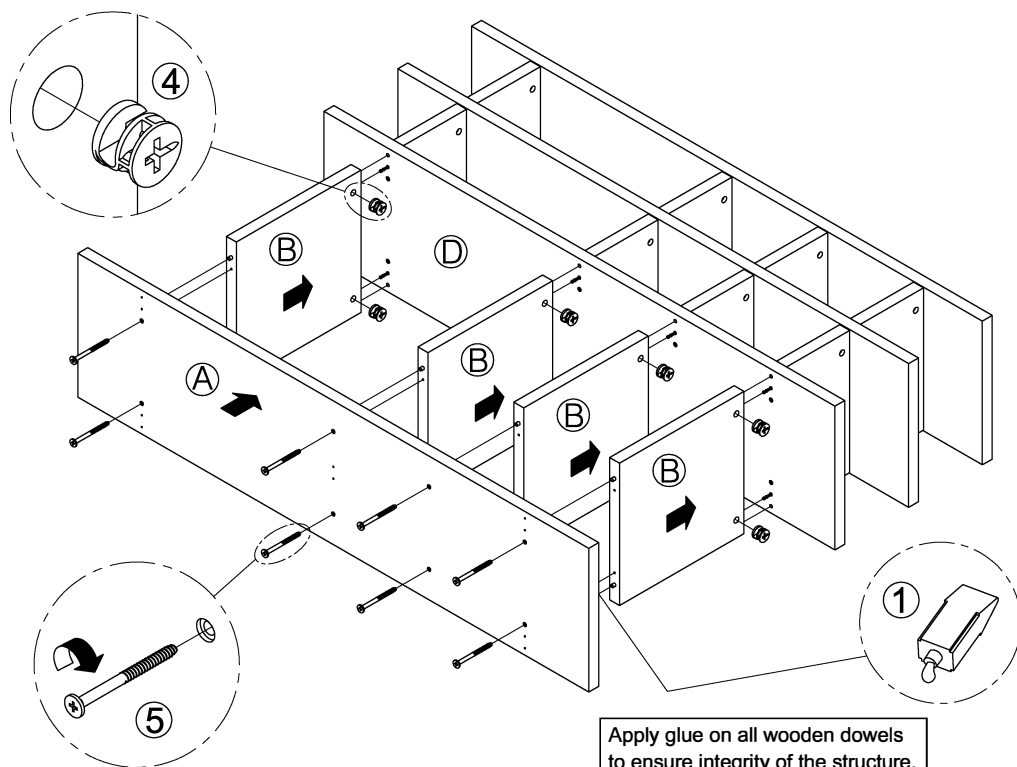
STEP 2 :



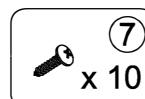
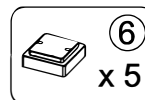
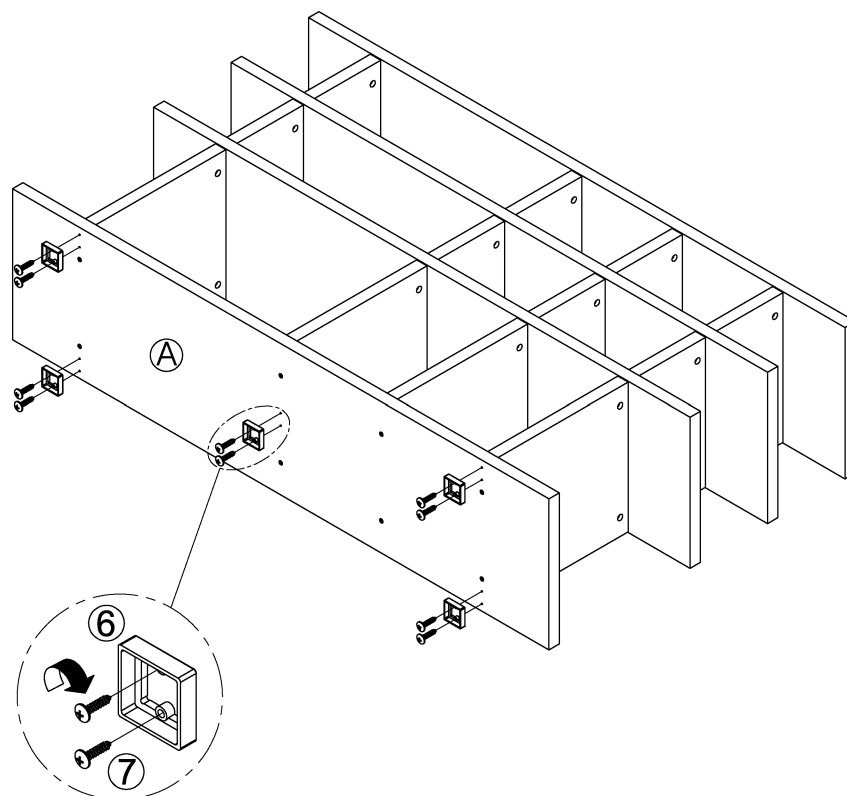
STEP 3 :



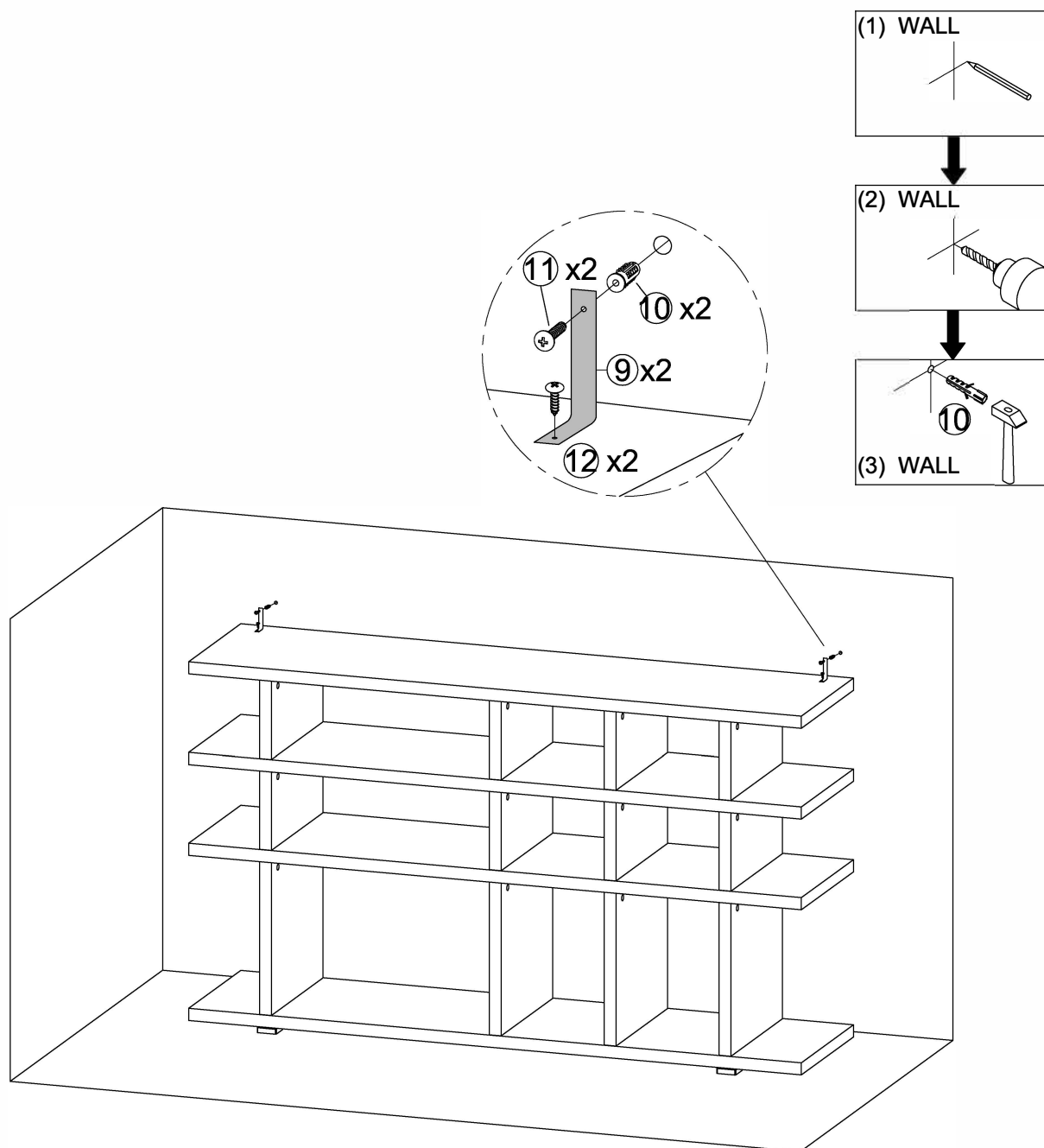
STEP 4 :



STEP 5 :



STEP 6 :



FURNITURE TIPPING RESTRAINT

WARNING

Injury may result from tipping furniture

This restraint is not a substitute for proper adult supervision.

This restraint may provide protection against tipping furniture.

Do not allow children to climb on furniture.

Failure to detach this restraint before moving furniture may result in injury and damage

