

SEACHROME

Seachrome Corporation
 1906 East Dominguez Street
 Long Beach, California 90810
 Phone: (800) 955-2476
 Fax: (800) 444-3380

Description: **GPS-TAB-QCS-TAB**
Straight Grab Bar
with Bolt-On Concealed Square Flanges
(Powder Coat Finish)

Customer:
 Customer Part #
 03-31-2026

Rev	Description	Date	Approved
-	Released		

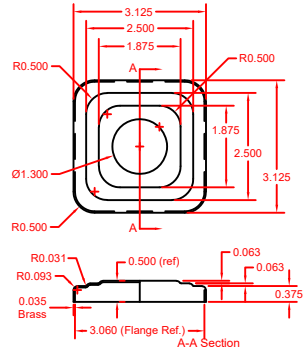
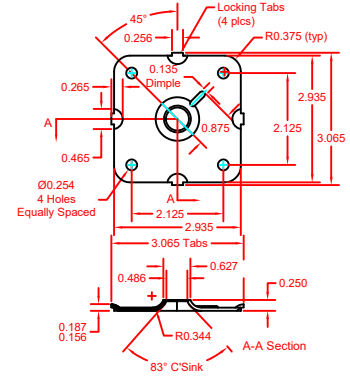
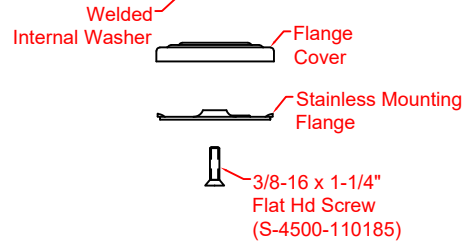
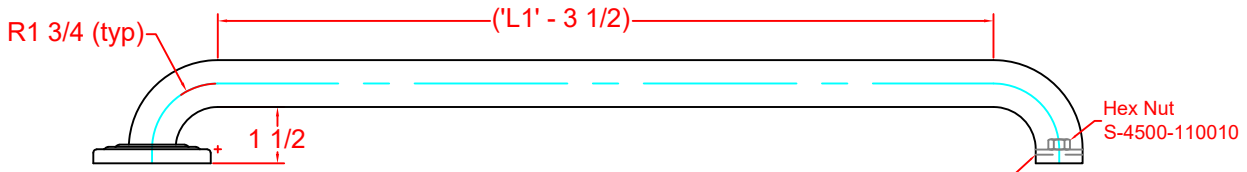
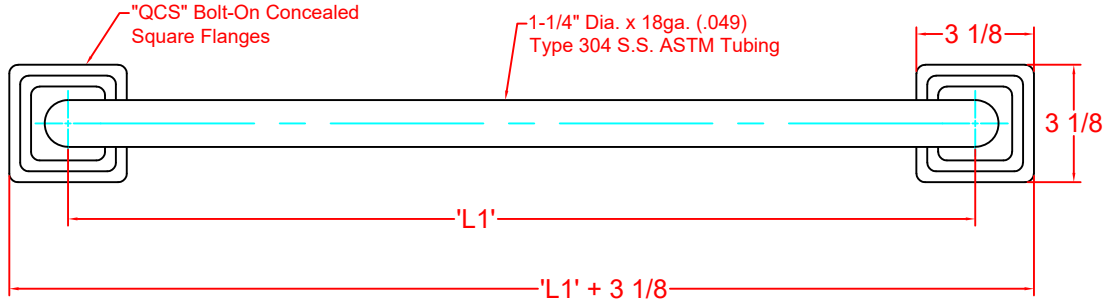
INTERPRET GEOMETRIC
 TOLERANCING PER: ASME Y14.5-2009
 UNLESS OTHERWISE SPECIFIED:
 DIMENSIONS ARE IN INCHES [MM]
 TOLERANCES: DECIMALS
 FRACTIONAL ± 1/16 .X ±0.10
 ANGLES ±2° .XX ±0.06
 BEND ±2° .XXX ±0.03

COMPLETE PART NUMBER: (EXAMPLE: GPS-543-QCS-AL)

GPS-**L1**-**543**-**QCS**-
 AL = ALMOND MB = MATTE BLACK
 BI = BISCUIT MWT = MATTE WHITE
 BK = BLACK PB = POLISHED BRASS
 BR = BRONZE SB = SATIN BRASS
 BSG = BLACK SEMI-GLOSS SN = SATIN NICKEL
 CB = CHAMPAGNE BRONZE WT = WHITE
 DB = DARK BRONZE

FRACTIONS OF AN INCH
 0 = .000 5 = .500
 1 = .125 6 = .625
 2 = .250 7 = .750
 3 = .375 8 = .875

LENGTH SIGNIFIED IN INCH INCREMENTS
 IE: 54 = 54.00"
 08 = 8.00"



Proprietary & Confidential

This drawing and the information contained herein is the property of Seachrome Corporation and shall not be reproduced, copied, or disclosed in whole or in part, or used in manufacturing, or for any other purpose without the written permission of Seachrome Corporation.

Hardware Package Includes:
 (8) #10 x 2-1/2" Phillips Pan Head Sheet Metal Screw (S-4500-110066)
 (2) 3/8"-16 x 1-1/4" FLT SOC CS SS (S-4500-110185)