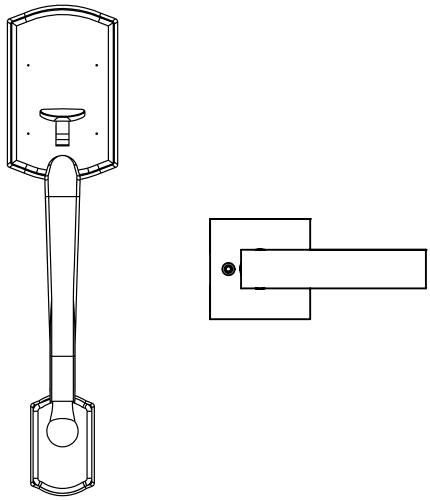
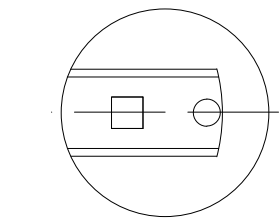
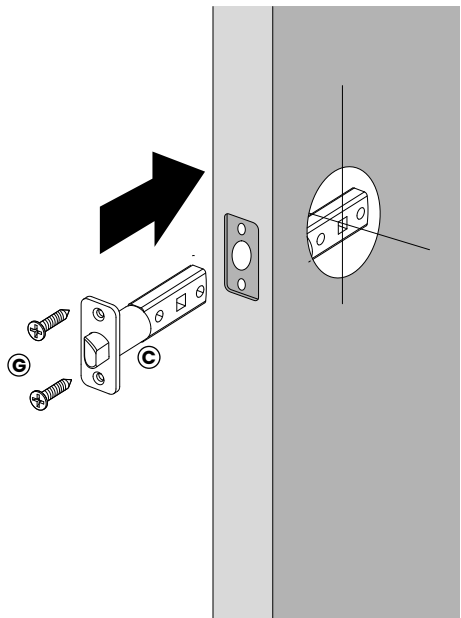


INSTALLATION MANUAL

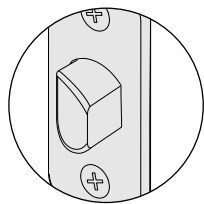


2

Install the latch

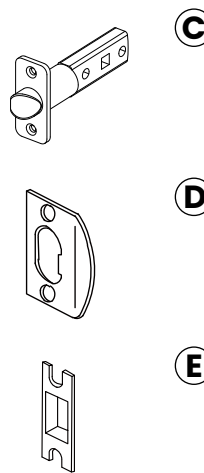
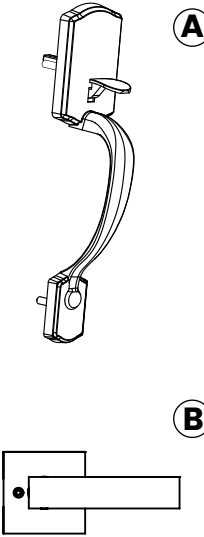


Note:
The square hole must be horizontal.



Note:
Ensure that the beveled edge of the lock tongue is oriented towards the direction the door swings shut.

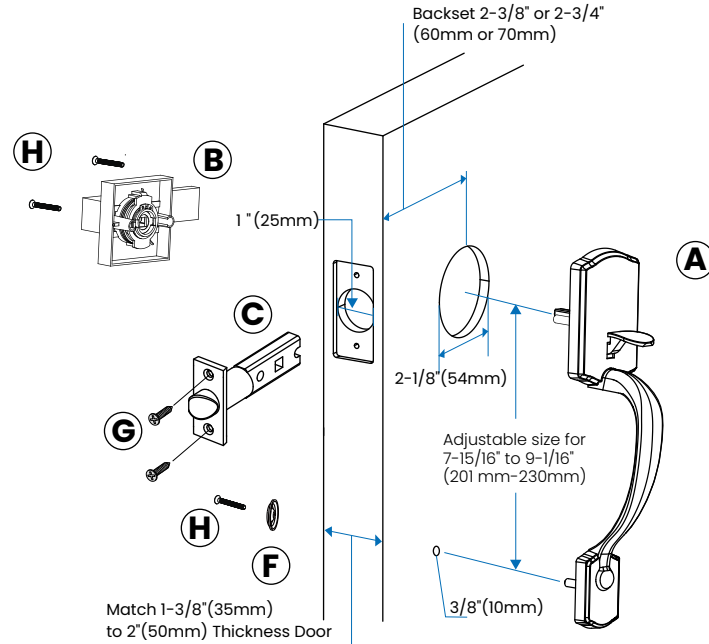
PACKING LIST



3/4" (20mm)
Latch/Strike Screws

1-1/2" (38mm)
Machine Screws

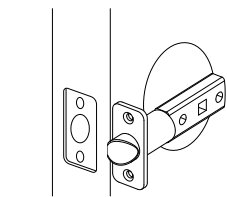
EXPLOSIVE VIEW



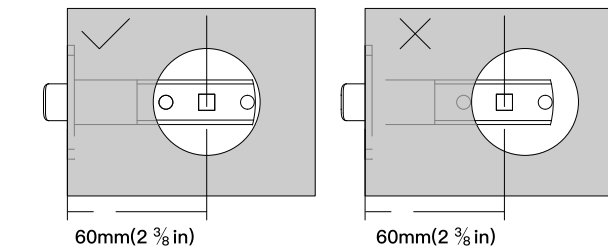
1

Adjust the backset of latch (if needed)

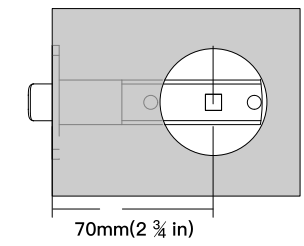
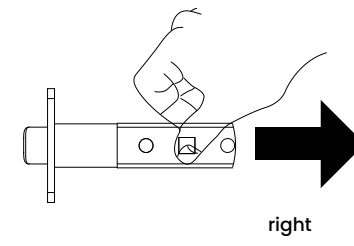
A Hold the latch in front of the door hole, with the latch face flush against the door edge.



B If the latch holes align with the door hole, no adjustment is required. Proceed to step 2. Otherwise, adjust the latch (See "Latch Adjustment").

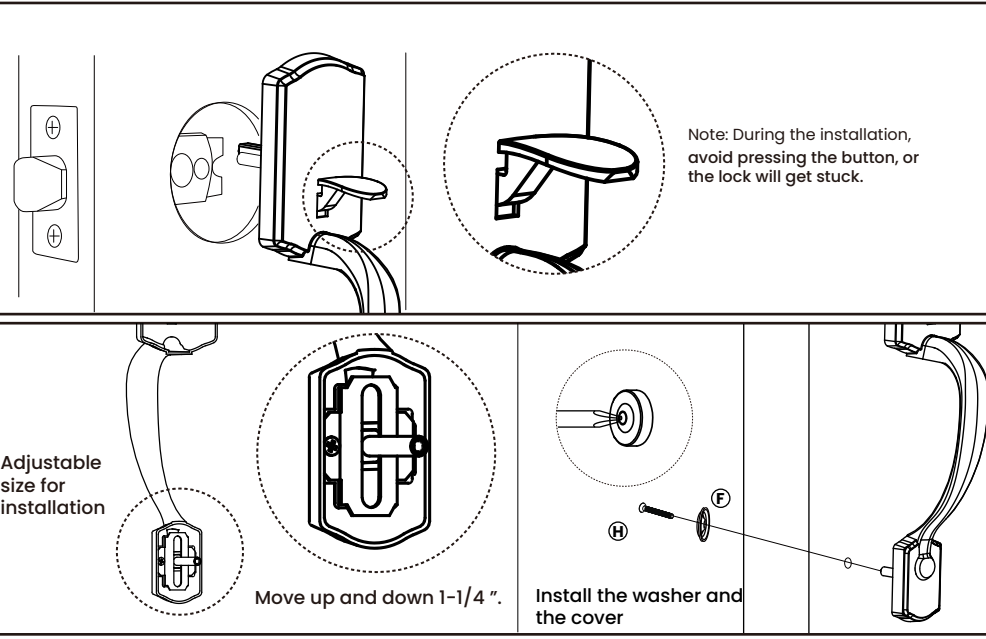


C Latch adjustment (only if needed)



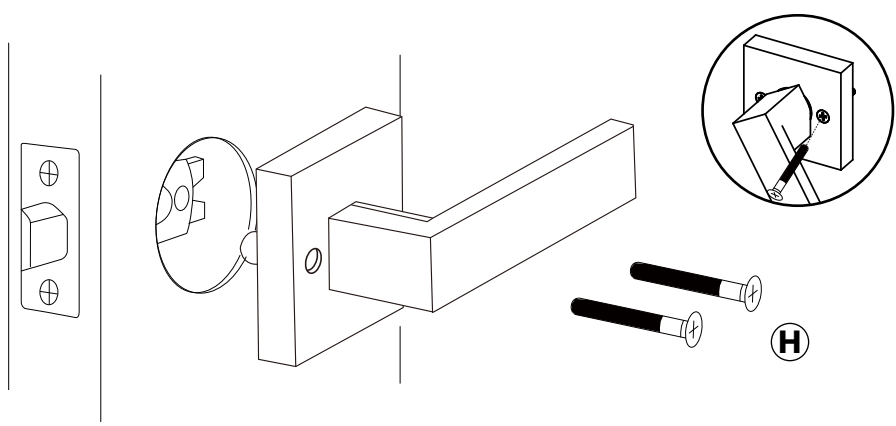
3

Install the exterior Handle



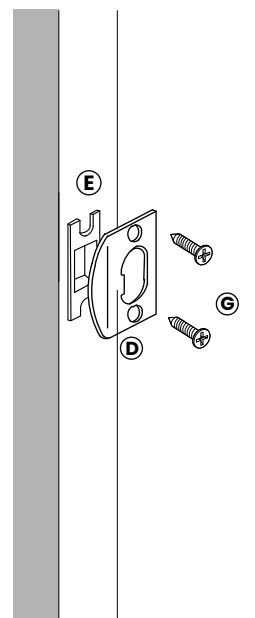
4

Install the interior handle lock



5

Install the strike



Mount the strike onto the door frame by aligning it with the latch height before drilling the required holes.