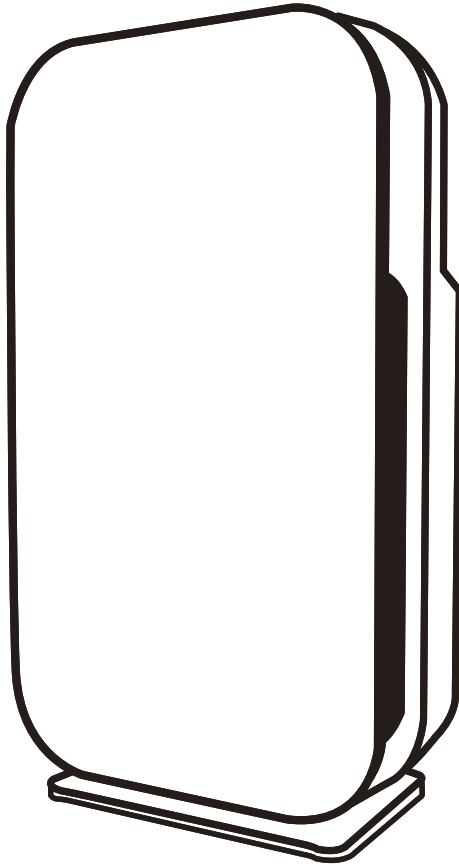


Advanced  PureAir®

# NEWPORT 7500m AIR PURIFIER

Owner's Manual



*Produced and distributed exclusively by:*

 **REAL SPIRIT**  
*an innovative products group*

v2.00

[www.AdvancedPureAir.com](http://www.AdvancedPureAir.com)

# Table Of Contents

Safety Information	1
Product Overview	2
<b>Setting up your APA-7500m.</b>	<b>3</b>
Functions	4
Cleaning	4
Filter Maintenance	5
Troubleshooting	6

## Safety Information

Please exercise caution using the Air Purifier or any other electrical device! This manual describes safety precautions which should be observed with your air purifier. Please review carefully BEFORE using your APA-7500m.



**RATED VOLTAGE**

The voltage rating for air purifiers sold in the US is AC110-120V, 50-60Hz,

Using the wrong current may result in unit damage, electrical shock or fire.



**DO NOT DISMANTLE**

Do NOT attempt to dismantle, repair or modify this device on your own. Doing so could result in electrical shock or damage to the unit. In the event of a malfunction, contact an authorized maintenance facility



**AVOID HEAT SOURCES**

Do NOT operate your air purifier in places where flammable, explosive, or otherwise combustible materials are stored.



**AVOID DIRECT SUNLIGHT**

Do NOT place the unit in direct sunlight or near lit fireplaces, furnaces, ovens or other high-temperature objects. Doing so can damage the air purifier and may pose a fire hazard. Avoid operating the unit when the air temperature exceeds 104 F/40 C.



**DO NOT TAMPER**

Do NOT place foreign objects in air purifier which can damage the rest of the unit or result in electrical shock. To avoid machine damage, injury, and accidents, Do NOT allow children to touch or play with this device



**KEEP AWAY FROM WATER**

To prevent the possibility of electrical shock or short-circuiting your air purifier, Do NOT place the unit in or near the shower, bathtub or other places where water may enter and damage the unit.



**DON'T COVER**

Do NOT operate your air purifier while it's covered with fabric, plastic or other materials. This can obstruct airflow, damage the unit, and may pose a fire hazard.



**AVOID DISTORTION**

To avoid distortion or interference, your air purifier should be placed at least three (3) feet from computers, televisions, and electronics.



**WHEN TO UNPLUG**

To avoid the risk of electrical shock and/or fire, unplug your air purifier from the electrical outlet under each of the following conditions:

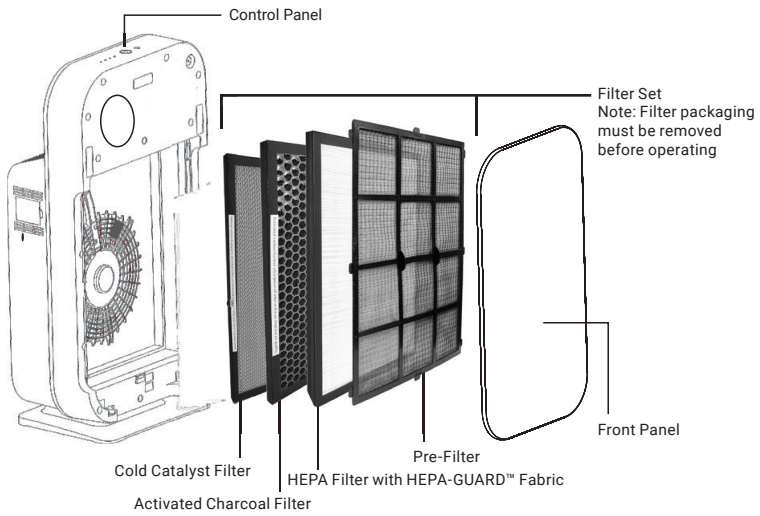
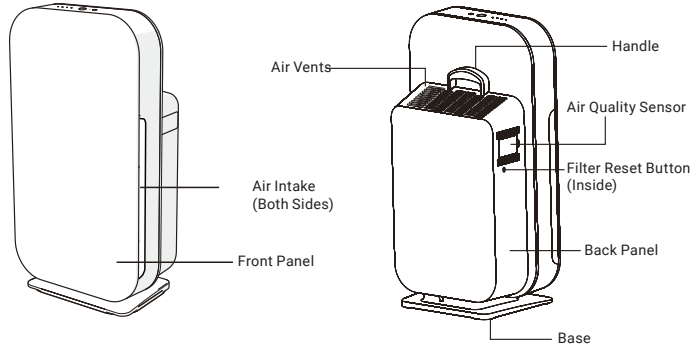
- When cleaning, servicing, or replacing filters on your air purifier.
- When you will not be using your air purifier for an extended time period
- When moving the unit from one location to another.



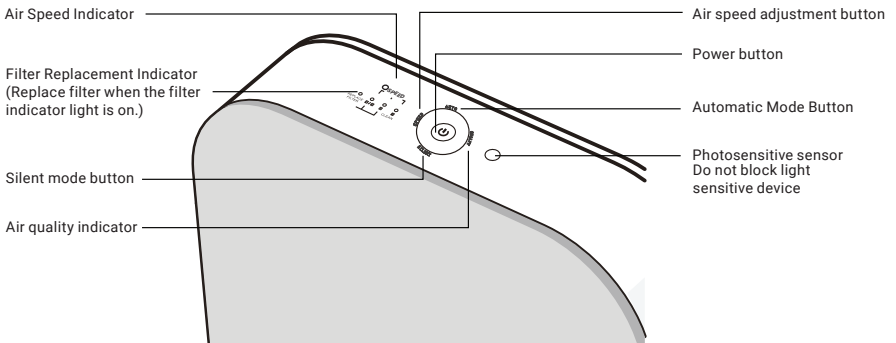
**DAMAGED CORD**

If the electric cord is damaged in any way, it must be replaced by the manufacturer or a qualified service center. NEVER operate a unit with a damaged cord. Doing so presents a serious risk of fire and/or electrical shock.

# Product Overview



## Control Panel Functions

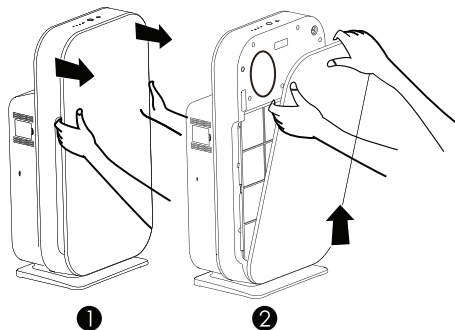


# Setting Up Your Newport 7500m

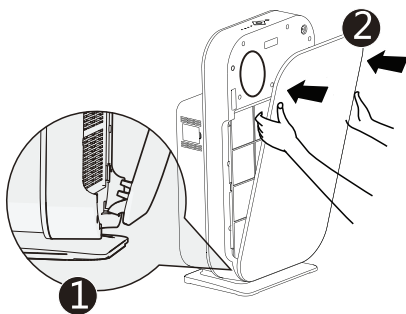
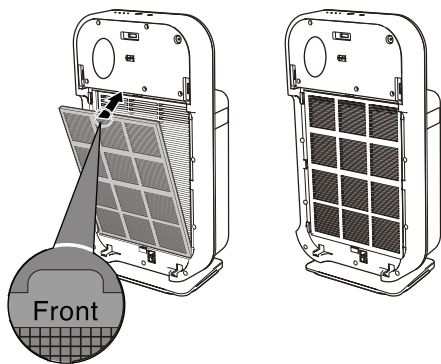
## Operating Steps:

For the first time using the air purifier, please follow the below steps to get the filters correctly installed.

1. Remove all the packing materials and put the air purifier on a dry, stable, flat surface.
2. Remove the front panel. Hold the grooves on both sides of the front panel and pull the magnetic door holder outward. Gently lift the bottom of the groove to remove the front panel.



3. Remove all the filters from inside the purifier
4. Remove all the filter packing materials, if any.
5. Place filters back into the air purifier in same order as when removing, with labels and tags facing out. See page 2 for diagram.
6. Place the pre-filter back into the purifier and snap it at top and bottom.
7. Reinstall the front panel.



# Functions

## Plug into power 110/120V outlet

The LED on the control panel light will blink twice.

## Power

When powered on, the indicator will be lit, and will be in ready mode after 1 flash. Now press the power button to start the air purifier. The air quality sensor should be ready within the first 1-2 mins.

## Auto Mode:

In Auto Mode, the air purifier will operate at a speed based on the current air quality.

## Silent Mode:

Press the SILENT button. The relevant light on the control panel should now be on. To return to Auto Mode, just press the AUTO button.

## Manually Adjust the Fan Speed:

Press the SPEED button to select the speed you desire (low, medium, high). The indicator light will turn on for the selected speed.

## Night Mode:

In Auto Mode, when indoor environment darkens, the air purifier will automatically switch to Night Mode.

## Note:

When operating in stand-by power, the dust sensor is not operating, and the air quality sensor will not work.

# Cleaning

- Be sure to unplug the power before cleaning your air purifier.
- Do not immerse your air purifier in water, or any liquid.
- Do not use abrasive, corrosive, or flammable detergents (such as bleach or alcohol).
- Only the pre-filter can be cleaned, other filters cannot be cleaned.

## Cleaning your Air Purifier

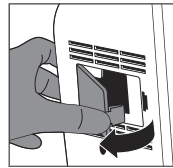
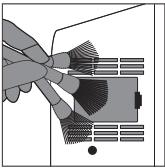
Regularly clean the inside and outside of the air purifier body to prevent dust, using a soft dry cloth.

## Clean Air Quality Sensor

The air quality sensor should be cleaned at least once a year to ensure the best performance.

**Note:** When indoor humidity is very high, air quality sensors may have condensation. Even if the air quality is good, the indicator may indicate poor air quality. In this case, you must clean the air quality sensor or use all manual settings.

1. Use a soft brush or a soft dry cloth to clean the sensor inlet/outlet.
2. Remove the cover of the sensor. (You may have 2 screws holding the cover in place, remove screws then remove cover.)



3. Using a cotton swab, clean the sensor inlet and outlet. Or spray with a compressed gas duster that can be used for computer cleaning. (DO NOT use a high power air compressor)

# Filter Maintenance

## Filter Maintenance and Cleaning Information

It's recommended to clean and maintain the pre-filter every 2 months (about 480 hours, based on 8 hours a day, 7 days a week for normal indoor household use.)

Only the pre-filter can be cleaned, other filters cannot be cleaned.

### Important Reminder:

Before placing filters into the purifier, remove the packing bag from each filter and ensure that the finger pull label on each filter is facing outward.

## Pre-Filter Cleaning Steps:

1. Turn off the power to stop the air purifier & unplug the power plug.
2. Remove the front panel & pre-filter.
3. Use a soft bristle brush or vacuum cleaner (on slow speed only) to remove particles.  
Wash with water and soapy water, if needed.
4. When the pre-filter is completely dry, put the pre-filter back into the purifier.
5. Reinstall the front panel.
6. Plug in and turn on the air purifier.

## When to replace filters:

If used on average of 8 hours per day and 7 days per week, in a normal household environment.

**Pre-Filter: Clean once every 2 months.**

**All other filters: Replace every 6 months.**

When the filter replacement indicator lights up and flashes, the filter needs to be replaced.

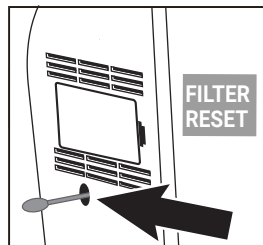
- Air speed indicator 1 lights up: HEPA filter needs to be replaced.
- Air speed indicator 2 lights up: Granular activated carbon filter needs to be replaced.
- Air speed indicator 3 lights up: Cold catalyst filter needs to be replaced.

### Steps:

1. Turn off the power and unplug the unit.
2. Remove the packing material from the filters.
3. Put the filters back into the air purifier (See diagram on page 2, if needed).
4. Reinstall the front panel.
5. Plug in and start the air purifier.
6. After the filter(s) is/are replaced, and the air purifier is plugged in, on the left side of the machine (when facing the machine), below the air quality sensor door you will see a small hole with a plastic button inside (about 1.25" inside), **press the filter rest button** with a cotton swab and hold for 3 seconds.  
This will reset the filter replacement indicators.

### Note:

If the replacement filter indicator flashes again, it is required to press the reset button inside until the filter light goes off. Repeat Step 6 if filter light has not reset.



For replacement filters, please call us at 1-888-601-5886 or visit us at  
[www.AdvancedPureAir.com](http://www.AdvancedPureAir.com)


# Troubleshooting

List of common problems that may be encountered when using this product. If you cannot solve the problem based on the following information, please contact Customer Service at 1-888-601-5886

Status	Possible Cause	Possible Solution
The air purifier won't power on.	The front panel may not be installed properly.	Remove front panel. Remove bags from filters and replace filters and close panel with latch to magnets
	The power plug is inserted incorrectly.	Pull out the power plug and reinsert correctly.
	The power plug or wire is damaged	Contact customer service: 1-888-601-5886
	The life of the filter is exhausted and has not been replaced, the protection performance of the filter is activated, and the machine stops running.	Please refer to filter replacement instructions. Press filter reset button after replacing the old filters with new filters. (see Page 5)
The fan does not work.	The air purifier is not on.	Plug in the power and turn on the air purifier again.
	Motor damage	Contact customer service: 1-888-601-5886
	The air purifier is placed on an uneven surface	Move the air purifier to an even and stable surface
	The air purifier is loose or there are foreign particles inside	Contact customer service: 1-888-601-5886
	Loose motor	Contact customer service: 1-888-601-5886
	The plastic packing material of filter hasn't been removed	Remove the plastic packing material from each filter before use.
The air speed does not adjust automatically after activation of the automatic mode.	The night mode starts automatically (due to dark room) and the LED of the machine goes out. At the same time, the air speed and noise level are also reduced.	Press the air speed button continuously to select a suitable air speed. Be sure room is adequately lit.
Poor performance or not optimal purification capacity.	The cleanable pre-filter is dirty	Clean the pre-filter
	The filters haven't been replaced	Replace with a new set of filters
	The air inlet or outlet of the air purifier is blocked	Clear passageway
	The plastic packing on filters has not been removed	Remove the plastic packing material from each filter before use
	There is no suitable clearance and space around the air purifier	Make sure that the air purifier has a clearance air inlet of at least 20 in.

# Product Warranty

- Advanced Pure Air® warrants their air purifiers to the original consumer purchaser to be free from defects in materials and workmanship under normal operation and use for a period of three (3) years from the date of original purchase. Under the terms of the warranty, Advanced Pure Air® will repair or replace any defective part(s) free of charge.
- This warranty is valid only to the original owner with proof of purchase.
- Product abuse, misuse, modification, alteration, or opening the unit housing, other than as required for filter replacement or routine maintenance and cleaning (as described in the owner's manual), will void the warranty. Spraying fabric cleaners or deodorizers into the product will cause damage and void the warranty. Use in a commercial application or marine environment is not authorized, this product is not intended to be used where salt spray is present and will void the warranty.
- Should the product fail during the warranty period, you must return the air purifier in original carton or same size acceptable shipping carton prepaid shipping via UPS, FedEx, or USPS to the address below. Accompanied by your name, address, telephone number, proof of purchase date and a description of the defect.
- Upon inspection, if under warranty Real Spirit USA will repair or replace with a new or refurbished unit, or an upgrade to similar or higher grade product. Shipping paid back to original purchaser by Real Spirit USA (within the contiguous United States).
- The warranty does not include unusual wear, damage resulting from accident or unreasonable use and also does not include replacement filters or other disposable/consumable parts.

<p><b>Advanced Pure Air®</b> Product Name: Air Cleaner Model No.: APA-7500m Voltage: 120V, 60Hz Power: 35W Date Code: <a href="http://www.AdvancedPureAir.com">www.AdvancedPureAir.com</a></p>	 <p>5020512 CONFORMS TO UL STD. 507 Made in China</p>
--	---

## QUESTIONS?

# CALL: 1-888-601-5886

*Produced and distributed exclusively by:*



Advanced Pure Air® is a division of Real Spirit USA, Inc.  
320 South Rock Blvd Suite 210 • Reno NV 89502 • Ph 888.601.5886  
[www.AdvancedPureAir.com](http://www.AdvancedPureAir.com) • [info@advancedpureair.com](mailto:info@advancedpureair.com)