

## 33" CERVANTES DOUBLE BOWL FARMER SINK

Cat. No  
FSSDB2516-SS



W: 33"  
D: 20- $\frac{3}{4}$ "  
H: 10"

**\*Please do NOT cut hole without  
template or actual product.**

### Interior Dimensions:

#### Large

Basin Interior: 20" W x 16" D  
Basin Depth: 9- $\frac{1}{2}$ "

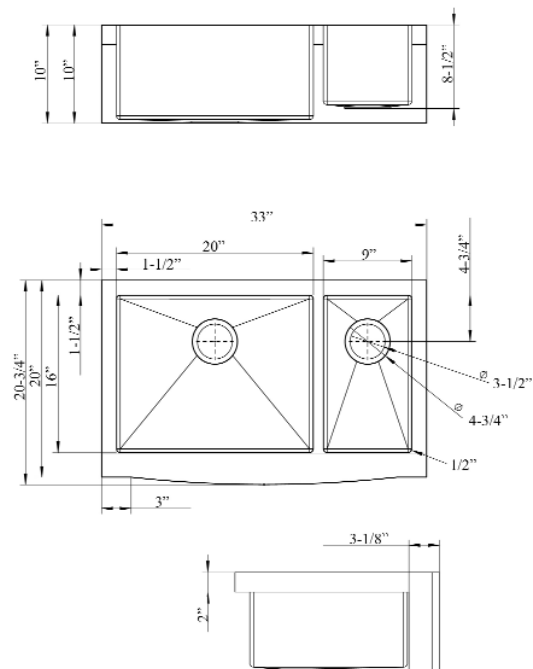
#### Small

Basin Interior: 9" W x 16" D  
Basin Depth: 8"

### Features:

- ▶ Solid 16 gauge, 304 grade metal construction
- ▶ Tight radius corners
- ▶ Easy maintenance with matte finish
- ▶ Mounting clips included
- ▶ Template is included
- ▶ Insulated for sound reduction
- ▶ Rim width is 1- $\frac{1}{2}$ "
- ▶ Drain is 3- $\frac{1}{2}$ "
- ▶ 70/30 offset
- ▶ Wire grid available to purchase separately,  
**FSSDB2516-WIRE**

**Compliance Certification**  
Meets or exceeds the following  
specifications: ASME  
A112.19.3-2001 for Stainless Steel.



Dimensions of fixture are nominal and may vary within the range of tolerances established by ANSI Standard A112.19.2. Dimensions and specifications subject to change without notice.