

10 : 00

estimated assembly



2 or more

people required

Ok, let's
get started!



- Put on mood music!
- To prevent damage to product, use the clean side of package carton or rug as working surface.
- In the event of missing or damaged parts, delivery problems etc., please reach out to our team. We will be happy to fix the problem!

care guide

- Clean regularly with a soft and dry cloth.
- To protect finish, avoid use of abrasive cleaners.
- Wipe up spills immediately. Please!



product parts



(A)
Sideboard
x1



(B)
Legs
x4

assembly instructions

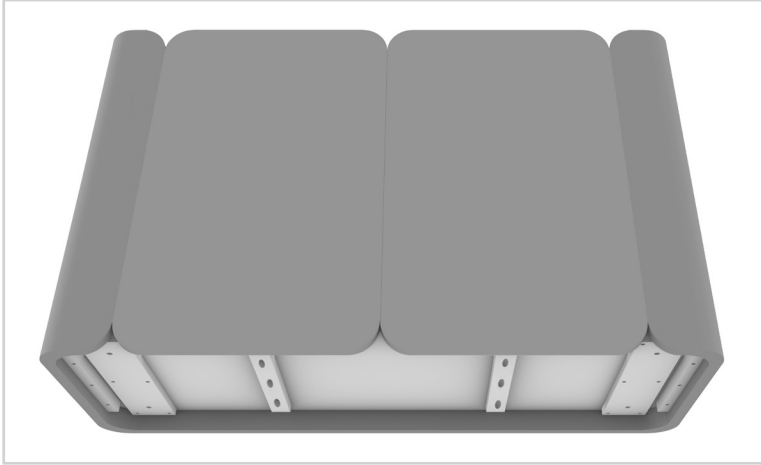
Friendly Tip: Take a deep breath going in. This may be a tricky part, but nothing too overwhelming. Just follow these steps to the T and the outcome will be worth it!



- ⓘ While assembling the product, tighten the bolts up to 50%. Once all parts are in place, only then fully tighten the bolts.

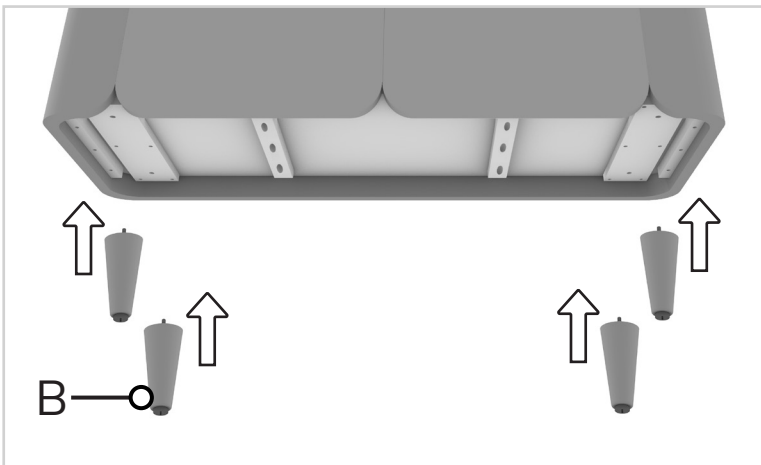
step 1:

Start by placing the tabletop (A) backside down way over a padded non-marring flat surface.



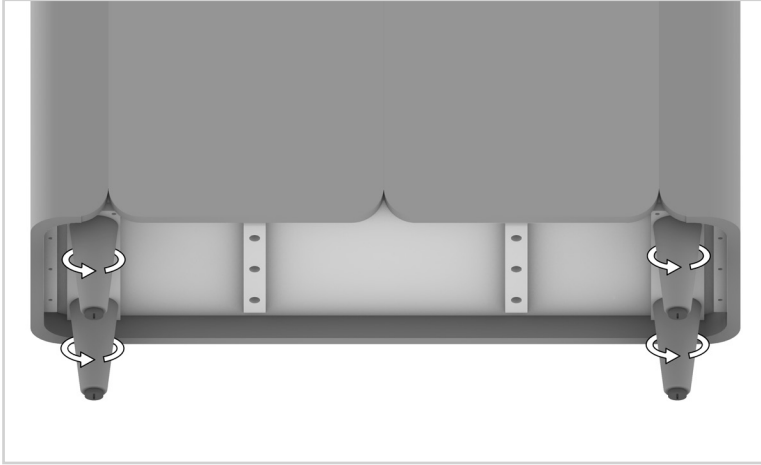
step 2:

Now, align the table legs (B) with given slots on the tabletop (A).



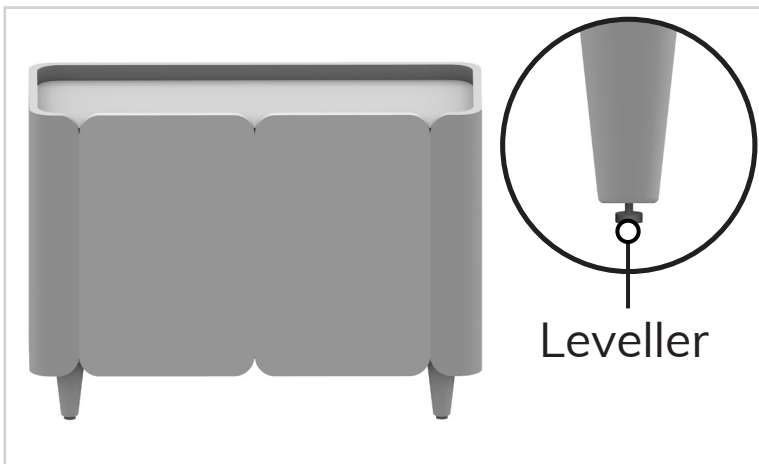
step 3:

Attach one of the legs (B) by rotating clockwise. Repeat the same process with remaining legs.



step 4:

When done, turn it into an upright position and if required adjust the levellers according to the floor as shown in the image.



Your sideboard is now assembled and secure!