

WIDESPREAD TYPE ONE ASSEMBLY

Steps to Complete Your Faucet Install

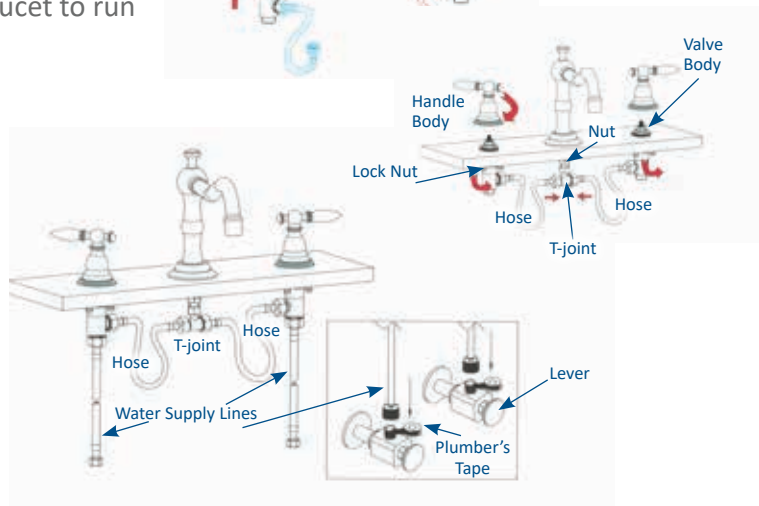
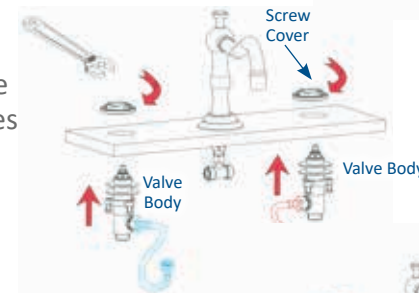
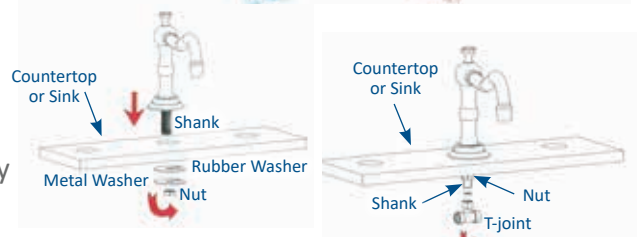
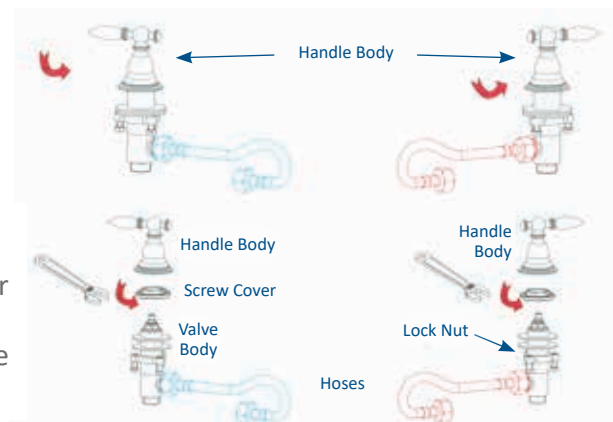
Applicable for the following 8" Widespread faucet series:

NBF-112

- **Turn the levers** on both the hot and cold water supply lines off so water will not be running through the pipes. These levers/pipes will be located under the sink in the cabinet.
- **Screw the handle body** to the right until the handle body is off. Using your crescent wrench, unscrew the screw cover to the right until off. Fasten the hot/cold flexible hoses into the water supply holes on the side of the valve body if necessary.
- **Insert threaded shank** through center hole on counter/sink. Place rubber washer, metal washer and nut onto shank from below counter. Tighten nut. Connect and tighten the T-joint to the shank.
- **Insert handle valve body** into outer hole, underneath counter/sink. From above, tighten screw cover back onto valve body. Place handle body back onto valve in desired position and tighten screw set. From below counter/sink, tighten nut on shank and lock nut on valve body until both are firmly in place against counter/sink. Tighten all nuts and screws.
- **Connect hoses from valve body to T-joint.** Then connect water supply line accordingly from base of valve body to base of levers. (*Water supply lines NOT included.*) Use plumber's tape if necessary. With the faucet handles turned wide open, slowly turn the levers on the hot & cold water supply lines to the open position and your desired flow rate. Allow faucet to run for a couple minutes to get rid of any air pockets in the pipes.

Please Note:

- Review and abide by all building and plumbing codes
- Standard codes for Novatto faucets: cUPC/CSA/AB1953
- Novatto faucets need to be installed by a professional
- Holes should be 1 3/8" for installation
- Max counter thickness 2"



TOOLS NEEDED FOR ASSEMBLY (not included)



Questions, problems, missing parts? Before returning to your retailer, call our customer service department at 844.404.4242, 8:00 a.m. - 5 p.m., MT, Monday - Friday or email us at: support@novattoinc.com

TROUBLESHOOTING TIPS

Issue	Reason	Solution
Leakage under the handle	Screw Cover has come loose; Valve may be defective	Re-tighten screw cover; Remove valve, check for cracks
Leaking from under the body	Cracked casing inside; Hoses may be loose	New faucet needed; Tighten hoses
Finish is changing color or is shiny	Abrasive cleaners, soaps or other factors constantly in contact with it.	Stop using abrasives; Replace parts
Water will not shut off completely	Valve may be defective	Remove valve, check for cracks