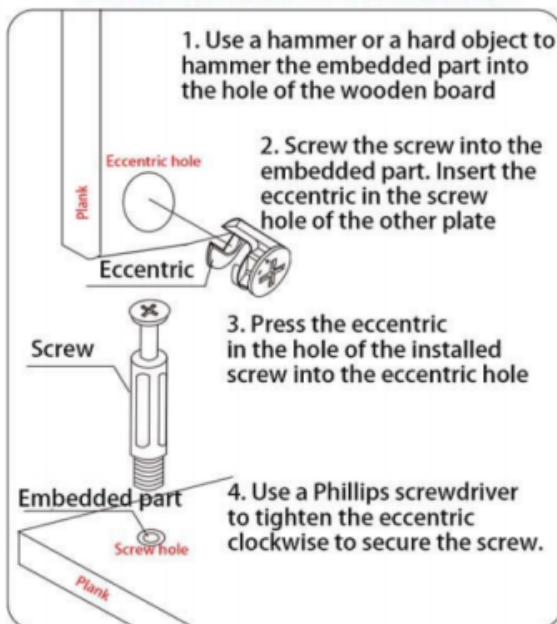









Three in one screw instructions



	A board with 3-in-1 screws
	Three-in-one connecting screw
	Three in one eccentric
	Plain weight
	screw
	Angle iron
	Brush wire box

Installation analysis:

- [Assemble box feet]** First assemble the box feet ①②③, below on the left, and tighten the three-in-one connecting screw and eccentric.
- [Connecting the pull plate]** Find the pull plate (with holes reserved at both ends) and insert the screw installed on the foot plate with the eccentric buckle.
- [assembly table]** Splicing such as the left figure table alignment and tight, in the ④⑤⑥⑦ place with flat iron code and small yellow screws, the several pieces of table splicing tight.
- [table foot fixing]** After the table is spliced and fixed, tighten the screws under the table and the foot plate (abcdefgh, etc.) with a 90-degree Angle iron.
- After all installed, put the two sides of the table into the open hole.