
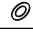
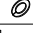


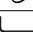
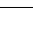


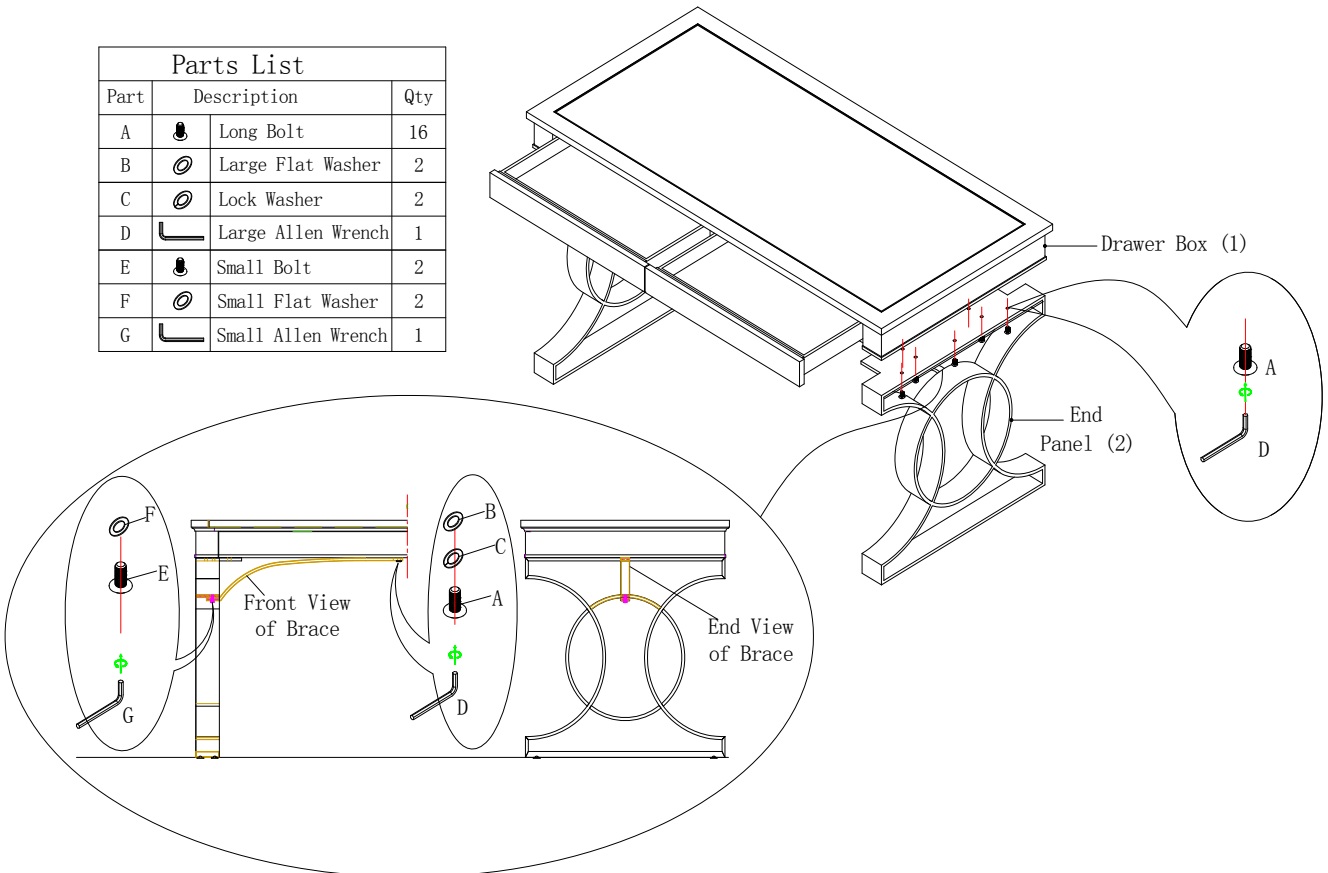
SLIGH

OFFICE AND MEDIA DESIGNS

ASSEMBLY INSTRUCTIONS

100RW-403 Writing Desk Assembly

Parts List			
Part		Description	Qty
A		Long Bolt	16
B		Large Flat Washer	2
C		Lock Washer	2
D		Large Allen Wrench	1
E		Small Bolt	2
F		Small Flat Washer	2
G		Small Allen Wrench	1



1. Lay Drawer Box upside-down on clean, flat, non-marring surface.
2. Position one End Panel so that holes in End Panel align with holes on Drawer Box.
3. Use Large Allen Wrench (D) to attach End Panel to Drawer Box with (7) Large Bolts (A). Do not fully tighten Bolts at this time.
4. Repeat steps 2 and 3 for other End Panel.
5. Position one Brace as shown above so that hole on bottom of Brace aligns with hole on circle of End Panel. Hole on top of Brace should align with hole on Drawer Box.
6. Use Small Allen Wrench (G) to attach bottom of Brace to End Panel with (1) Small Flat Washer (F) and (1) Small Bolt (E). Use Large Allen Wrench (D) to attach top of Brace to Drawer Box with (1) Large Flat Washer (B), (1) Lock Washer (C), and (1) Large Bolt (A). Do not fully tighten Bolts at this time.
7. Return assembled desk to its upright position. Fully tighten all Bolts. Place desk in desired location.

For additional consumer assistance please contact your Sligh dealer or call our Consumer Services Department at 1-336-474-5300, Monday-Friday, 8-5 Eastern