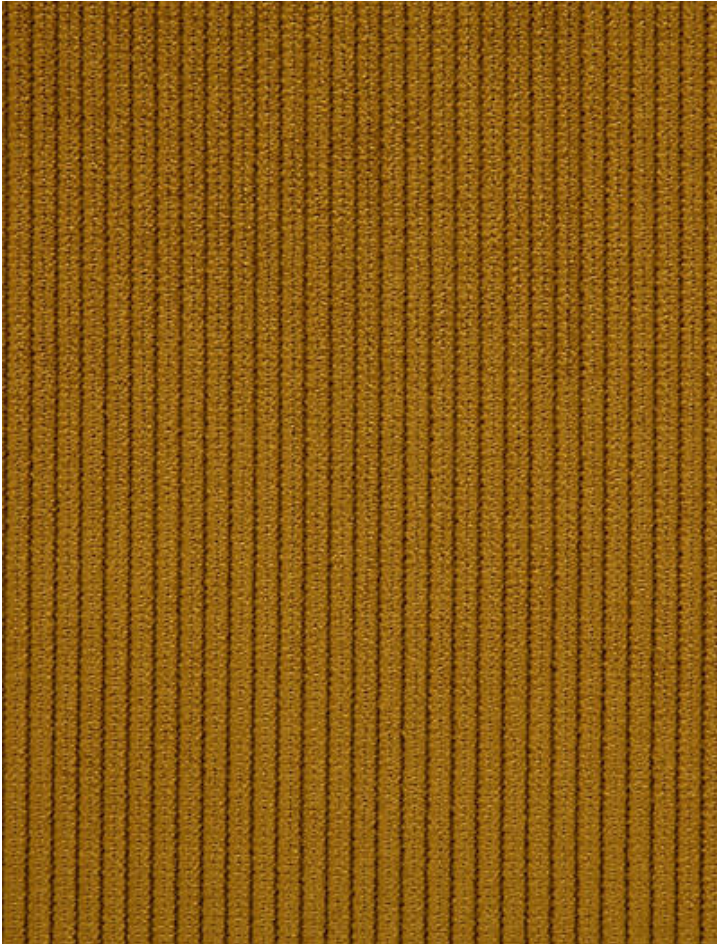


# RIGA M1

CURRY • H0 L001 0806

Velvets from the Contract 24 Collection by Lelièvre



APPROX. MATERIAL 55.50" / 140.97 cm  
WIDTH

APPROX. REPEAT . . . HORIZONTAL 0" / 0 cm  
VERTICAL 0" / 0 cm

CONTENT . . . . . 100% POLYESTER, TREVIRA CS

SUGGESTED USE . . . HEAVY DUTY MULTIPURPOSE

PERFORMANCE / . . . FLAME RETARDANT (FR)  
CONTRACT HEAVY DUTY ABRASION  
IMO CERTIFIED

ABRASION . . . . . 90,000 MARTINDALE

FIRECODE . . . . . M1, B1, CLASS 1, EN 2021 PART 1&2

CLEANABILITY . . . . . DRY CLEAN ONLY

MADE IN . . . . . TURKEY

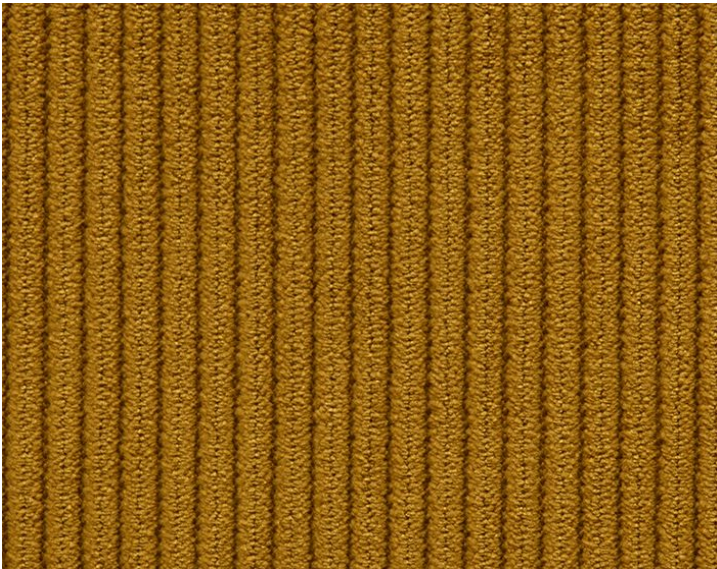
STOCKED IN . . . . . SUPPLIERS WAREHOUSE EUROPE

DESIGN . . . . . PLAIN / SOLID  
STRIPE

SCALE . . . . . PLAIN / SOLID

#### DESIGN INSPIRATION

A timeless corduroy that is both elegant and simple. Riga can be a casual chic addition for contemporary or classical interiors, showing great versatility in its use. Supple and soft to the touch, with a dense pile, it is extremely robust for all upholstery use.



DETAIL IMAGE