



66"/72" 8-BLADE Ceiling Fan with Light

User Manual

GET MORE SUPPORT

If you experience any issues while operating our products, please directly reach out to our Customer Support.



Installation Precautions



WARNING

It is prohibited to run the motor without a load. Powering on the motor for testing when the fan blades are not installed or the assembly is incomplete may lead to motor overheating, bearing damage, or circuit failures (the motor of the ceiling fan light is equipped with a built-in sensor that will automatically stop the operation when it is running without a load).

It is recommended to complete all the assembly work according to the installation guide before powering on to avoid damaging the motor.



01 30-day money-back guarantee

If for any reason, within 30 days of receiving your order, you may return your undamaged product to us for a full refund.

02 5-year quality guarantee

If the product results in quality-related defects within 5-years from the date of purchase, please contact us immediately. We solemnly promise to take full responsibility for the quality of our products, and will provide you with the most satisfactory solutions.

And no need to return the original product. You don't need to pay any additional fees.

03 Quick Response within 12 Hours

If you encounter any issues or defects before or after product installation, be sure to get in touch with customer support immediately. Our team will make things right and respond to your request within 12 hours. Please do not initiate a self-service return, which will result with delay of your time and the loss of shipping cost reimbursements.

04 Free user support

Not sure how to get your product working properly? Contact our world-class, friendly support team for immediate assistance.



Thank you for choosing.
We are here to support you every step of the way.

**Active 20% off
discount
in next purchase**



WARNING

To avoid fire, shock, and serious personal injury, please read the following instructions carefully.

Important Safety instructions.

- Before installing the fan, disconnect the power by removing fuses or turning off circuit breakers.
- Make sure the installation site you choose allows a minimum clearance of 7 feet from the blades to the floor and at least 30 inches from the tip of the blades to any obstruction (see the picture at the last page).
- If you are mounting the fan on a ceiling outlet box, use a metal sturdy base. Secure the box directly to the building structure. The outlet box and its support must be able to support the moving weight of the fan at least 45 pounds. Do not use a plastic outlet box. Attach the mounting brackets by winding the hardware provided with the can to the ceiling outlet box.
- If you are mounting the fan to a joist, make sure it is strong enough to support the moving weight of the fan (at least 45 pounds).
- After installing the fan, make sure all the connections are secured. This will prevent the fan from falling.
- Do not insert anything into the fan blades while the fan is operating.
- Turn the fan off and wait for it to stop before reversing fan direction.
- To reduce the risk of personal injury, don't install fans on the tilted ceiling.
- To reduce the risk of electrical shock and personal injury, do not use this fan with any solid-state.
- To reduce risk of personal injury, use only the two steel screws and lock washers provided with the fan for mounting the outlet box.
- The largest angle for angled mount is 12° (see the picture at the next page).

RISK OF ELECTRIC SHOCK

- Before you start installing this ceiling fan, disconnect the power supply by turning off the circuit breaker.
- All electrical connections must be in accordance with local standard National Electrical Code (NEC) and ANSI/NFPA 70.
- Consult a qualified electrician if you are unfamiliar with proper electrical wiring connections.
- Do not alter, re-locate, or remove wiring when nothing goes wrong with the product.
- Double-check all connections and screws to be sure they are tight and correct.
- Verify whether the supply voltage is correct by comparing it with the product information.

RISK OF INJURY

- Keep all the parts of this product away from children. The package contains many small or heavy parts that may bring children the risk of injury.
- Make sure to install all parts firmly enough in case they fall while running. Carefully check all screws, bolts, and washers on the fan assembly to ensure they are secured.
- Wear safety gloves and safety glasses always when installing or removing the light or the fan, or performing maintenance. Some parts of the components are sharp and may hurt your hands; please make sure you are wearing safety gloves when touching and installing the components.
- Wear rubber-soled shoes and work on a sturdy ladder.

MAINTENANCE TIPS:

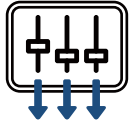
- **RISK OF ELECTRIC SHOCK** Periodically cleaning your ceiling fan is the only required maintenance. When a soft brush or lint-free cloth to avoid scratching the paint, please turn off the electrical power before you clean your fan.
- Do not use water when cleaning your ceiling fan. It could damage the motor or the blades or even cause an electrical shock.
- The motor has permanently lubricated ball bearings. No need to oil.

MAKE SURE THE POWER IS OFF IN THE ELECTRICAL PANEL BOX BEFORE YOU DO ANY CLEANING OR REPAIRS.



WARNING

To avoid serious injury or death, turn off the power at the circuit breaker before installing the fan.



TURN OFF

IMPORTANT

To avoid abnormal operation, do not connect the product to the dimmer switch or fan speed switch.



Applicable to only one type of ceiling

01

Horizontal installation

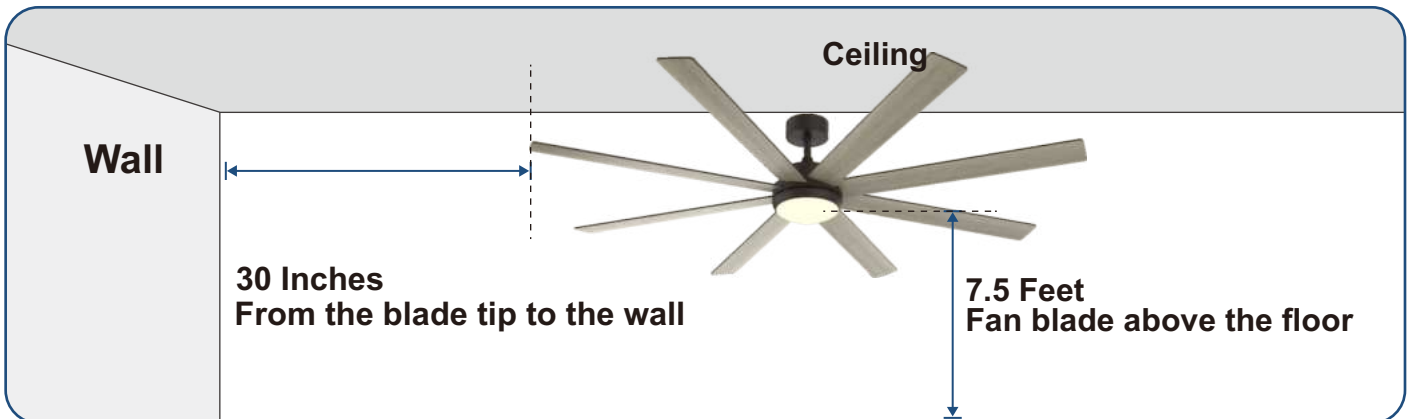


02

Sloped Ceiling Mount (12°)



Installation distance reference



TOOLS NEEDED



Phillips Screwdriver



Wire Stripper



Step Ladder



Safety Gloves



If you have trouble reading the instructions, please watch the installation video.





Accessories List

Part 06

- Receiver _____
- Hanger Bracket _____
- Downrod _____
- Canopy _____
- Decorative Yoke Cover _____
- Motor _____
- Blade _____
- Lamp panel _____
- Lamps _____
- lampshade _____



Remote Control



 01 x1	 02 x1	 03 x1	 04 x1	 05 x1
 06 x1	 07 x1	 08 x8	 09 x1	
 10 x1	 11 x1	 12 x1 When you use a 24-inch extended down rod, you need to use these two wires to extend the two power cords on the motor.		 13 x4
 14 x2	 15 x2	 16 x3	 17 x34	 18 x34
 19 x1	 20 x1			

Notice

The quantity listed above is the number required for installation. If there is a missing part in your package, please reach out to us

Section 1

Hanger Bracket



Difficulty Level: ★☆☆☆☆

Let's move towards success with a relaxed start !

Needed Accessories



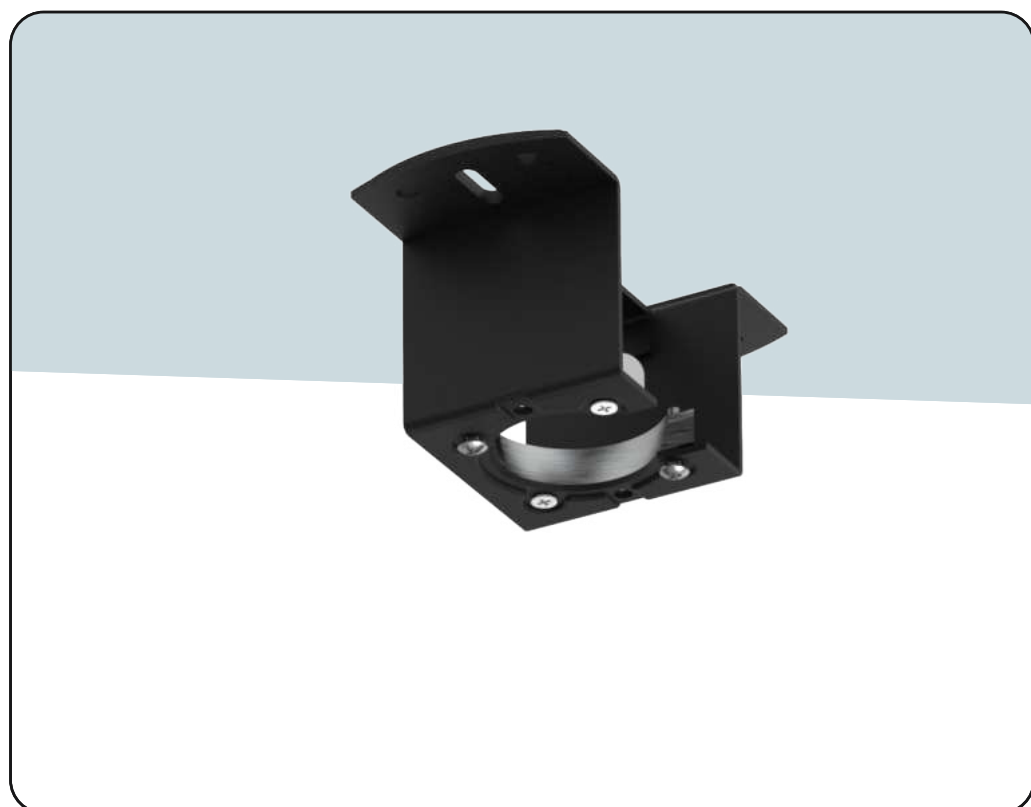
x4



x2



x2





Installation Steps

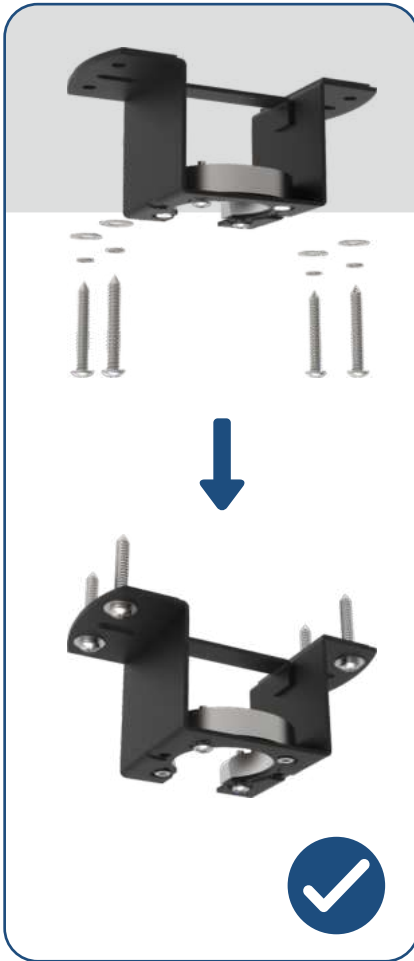
Hanger Bracket

Blades

Light Kit

Downrod & Motor

Wood Ceiling



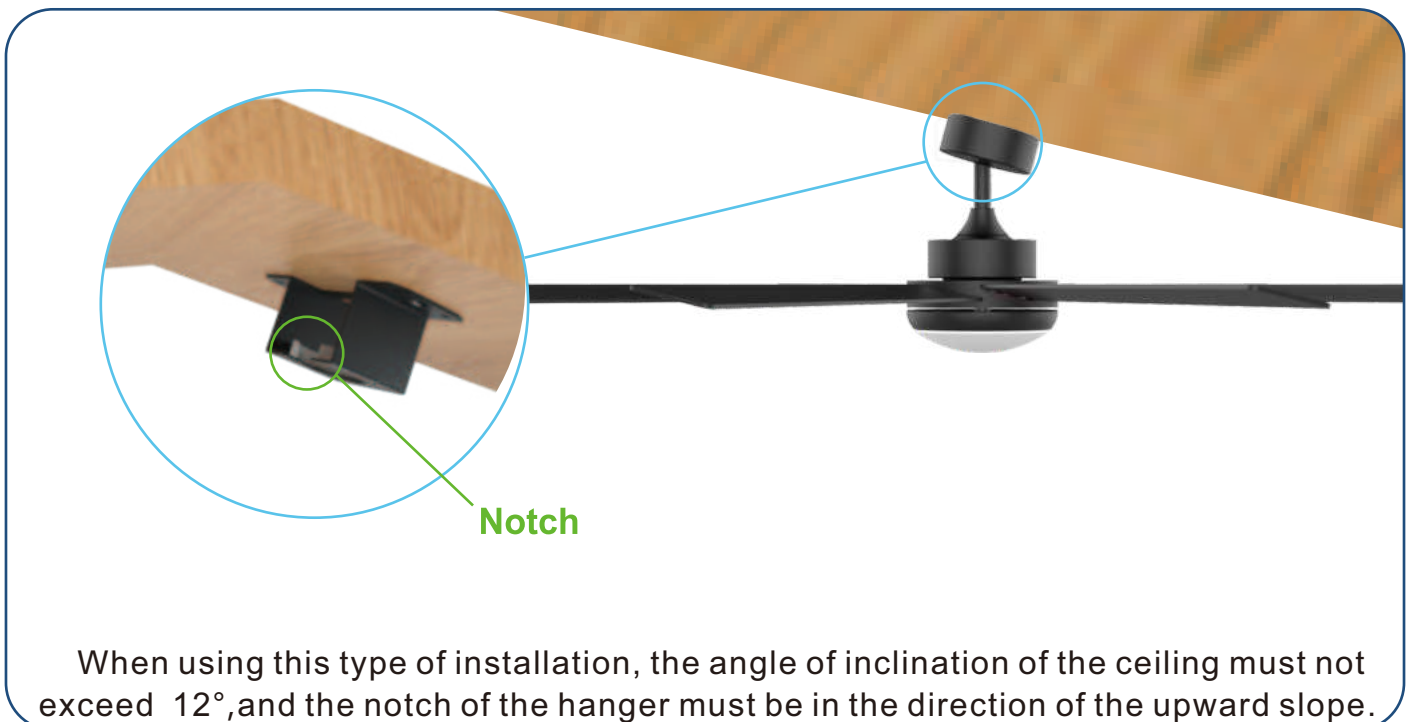
Concrete ceiling



Junction Box



Precautions for slope installation



Section 2

Mounting Blades



Difficulty level: ★ ★ ★ ★ ☆

There is a lot of repetitive work in this part.

Please be more patient !

Needed Accessories



x1



x8



x34



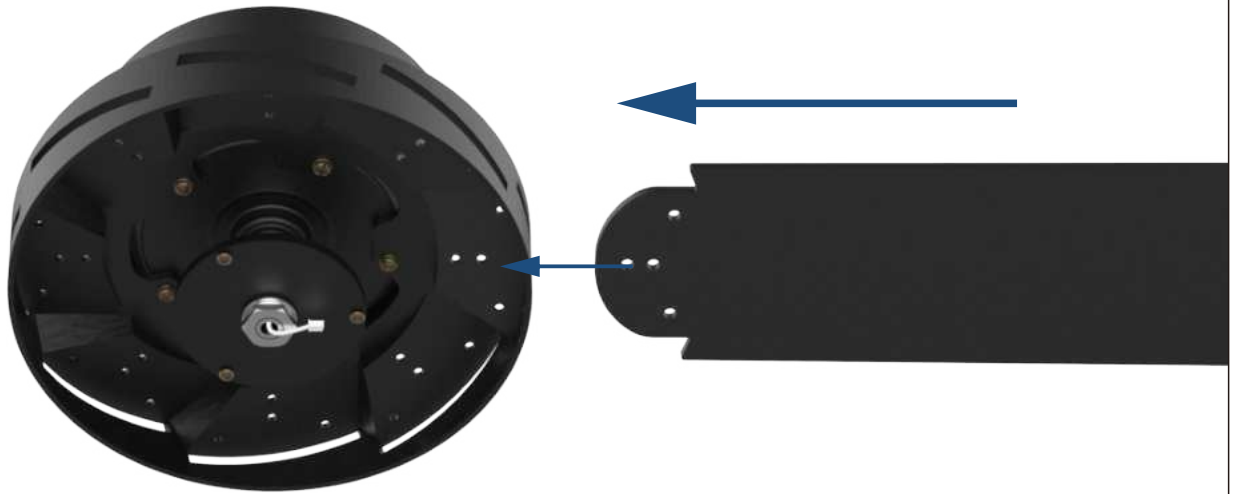
x34





Installation Steps

01



02



Section 3

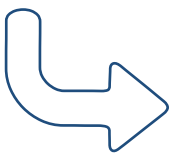
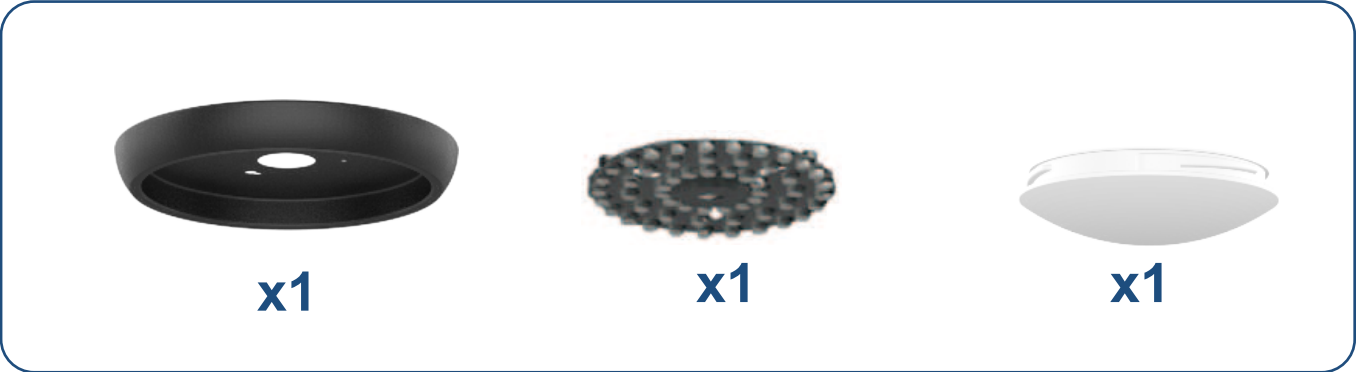
Light Kit



Difficulty level: ★★☆☆☆

You are almost finished! Let there be light!

Needed Accessories





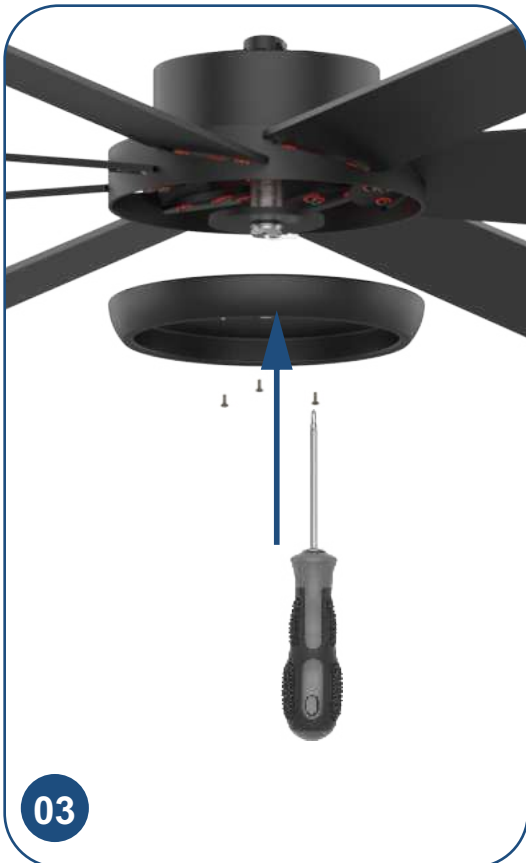
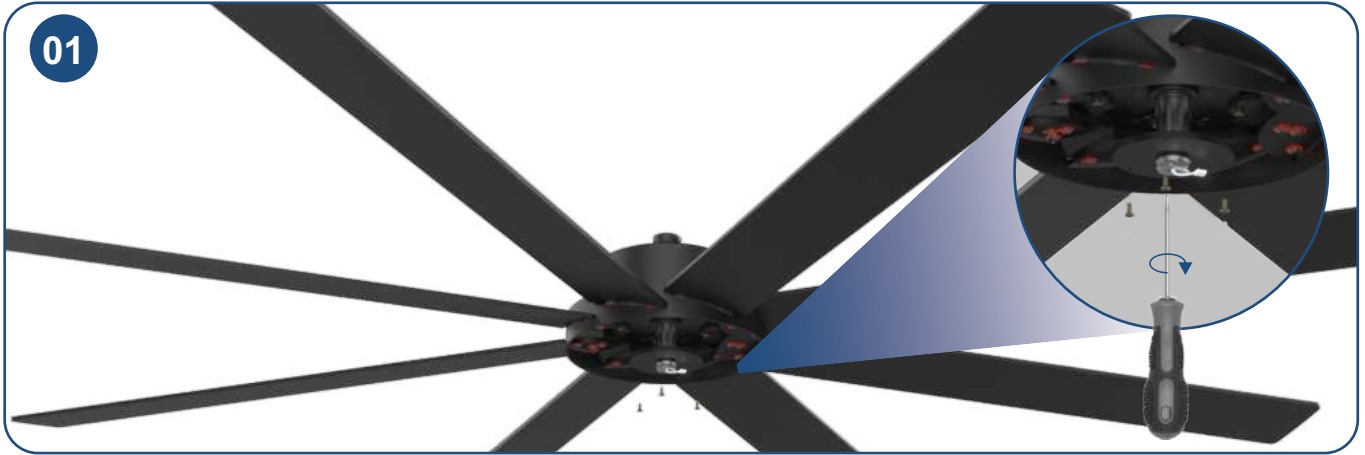
Installation Steps

Hanger Bracket

Blades

Light Kit

Downrod & Motor



Section 4

Downrod & Motor

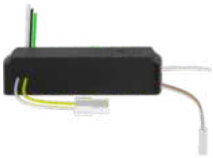


Difficulty level: ★ ★ ★ ★ ★

There will be some wiring involved, but don't worry, I'm sure you can do it!

***Before all installation work, please carefully check that the power is turned off**

Needed Accessories



x1



x1



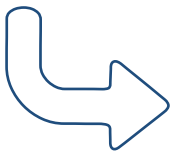
x1



x1



x1





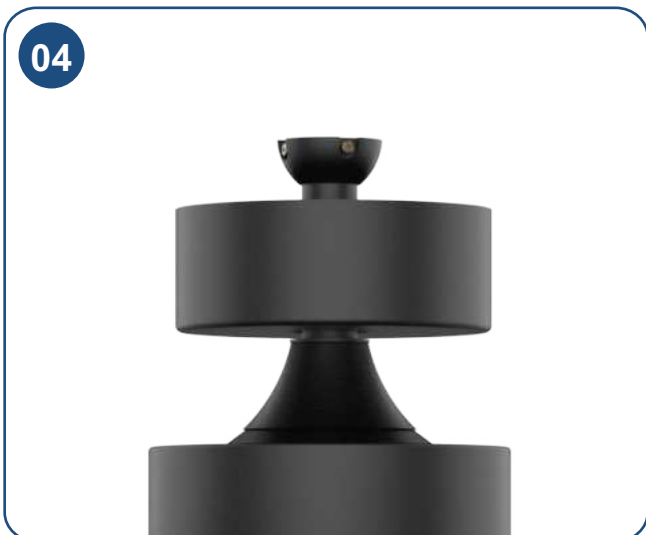
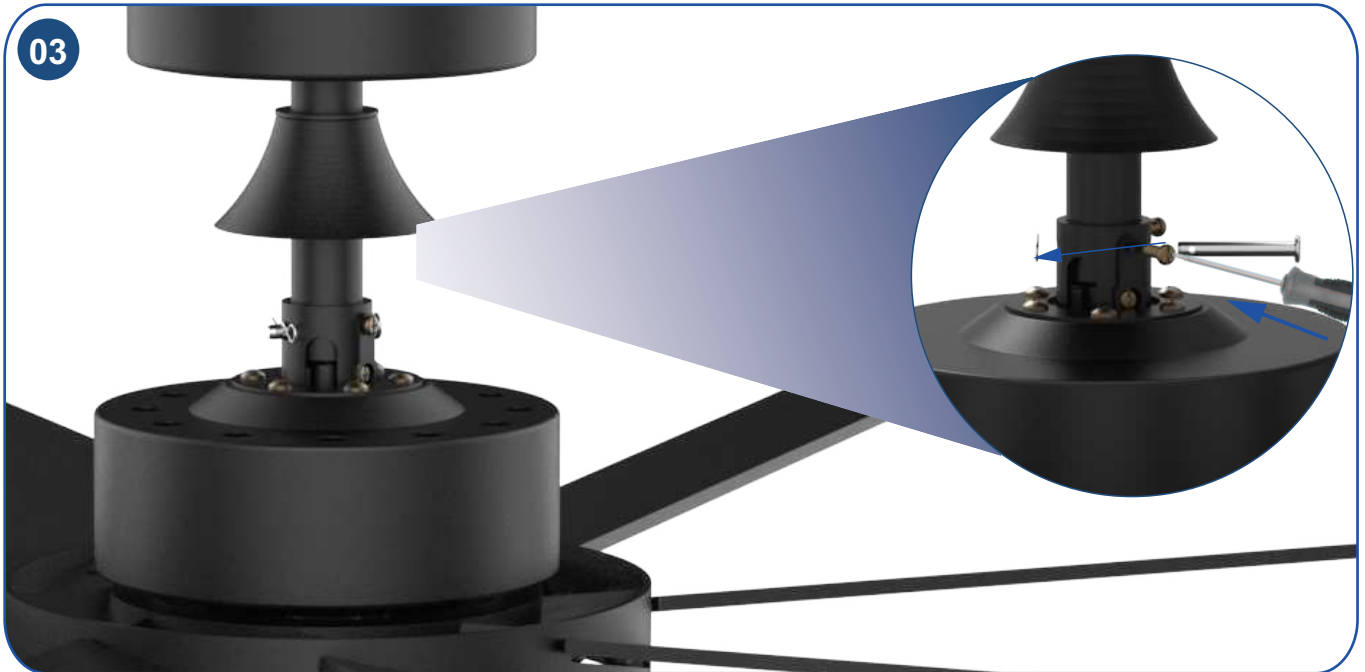
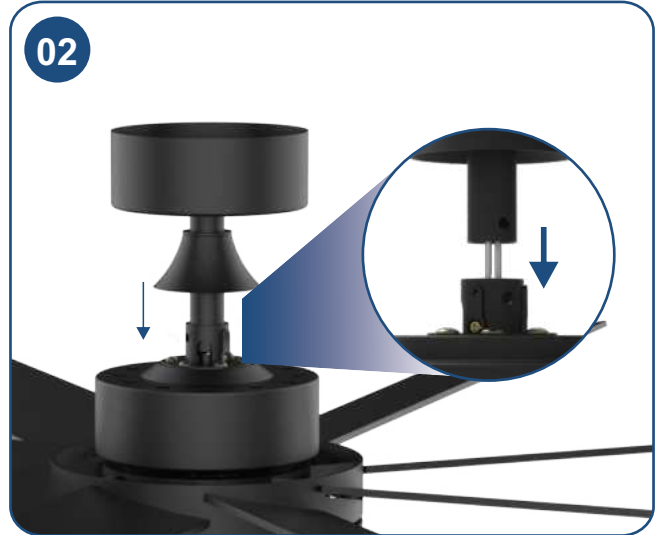
Installation Steps

Hanger Bracket

Blades

Light Kit

Downrod & Motor





Installation Steps

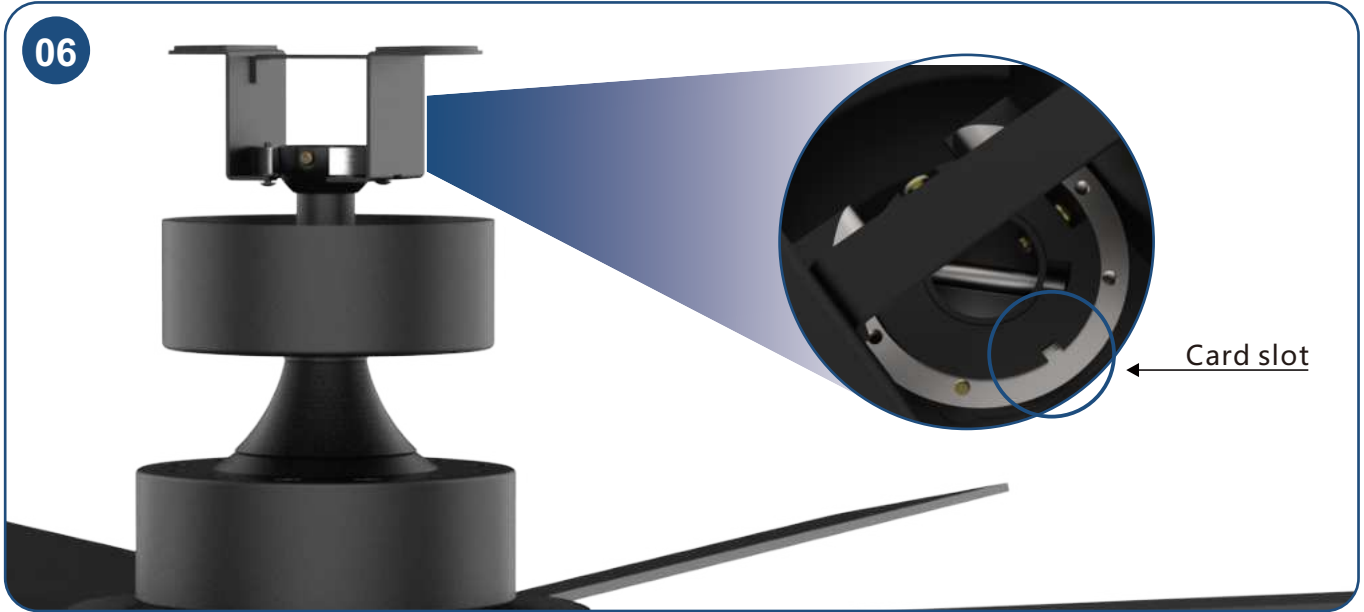
Hanger Bracket

Blades

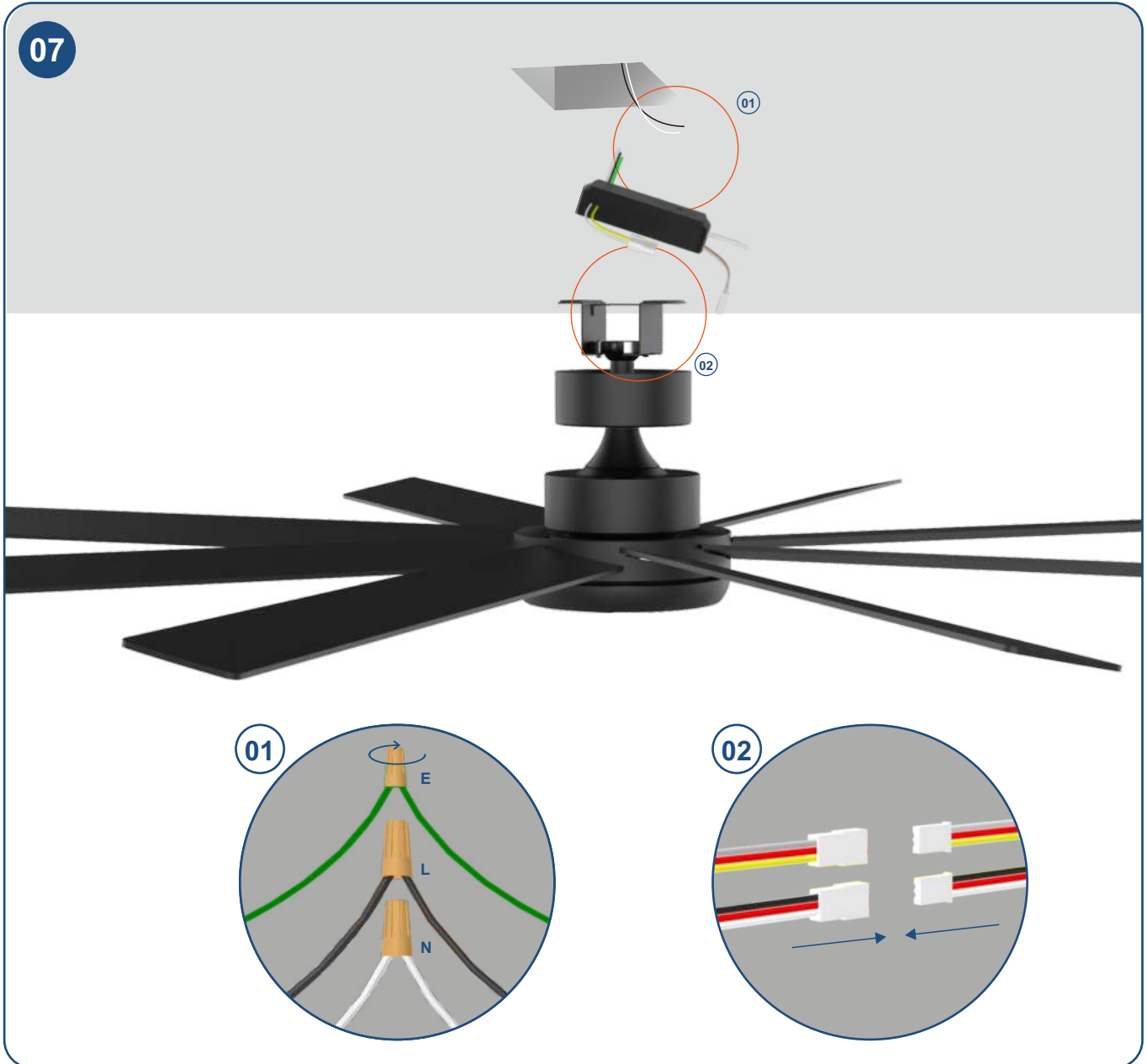
Light Kit

Downrod & Motor

06



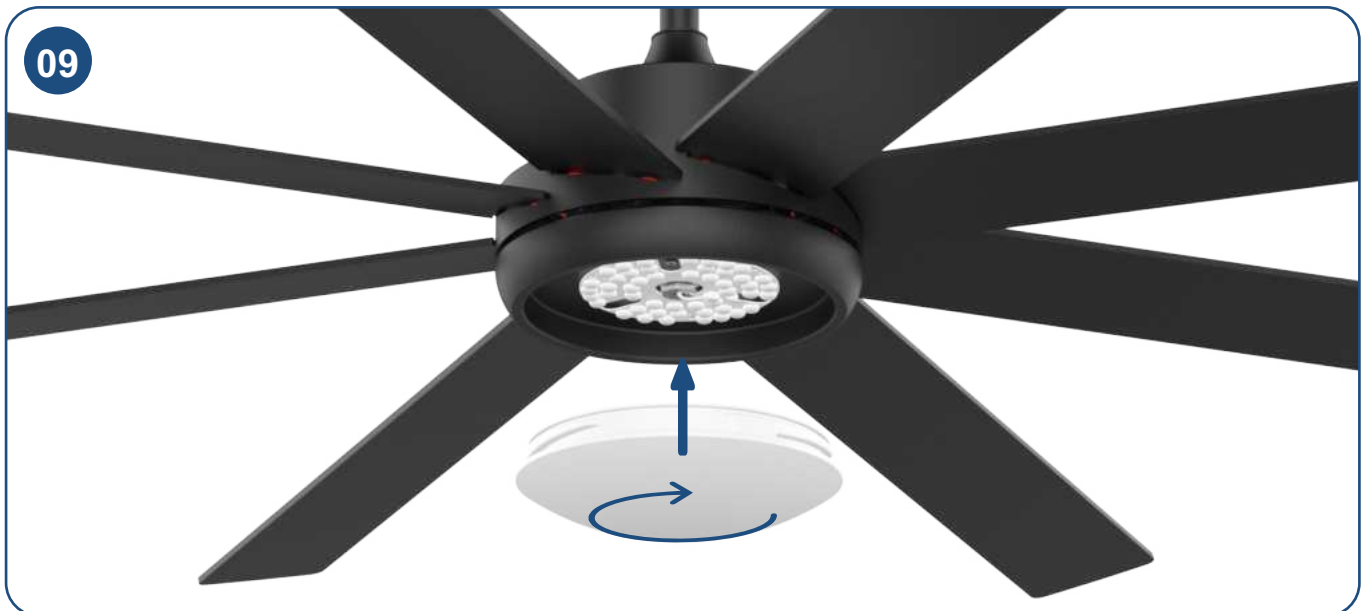
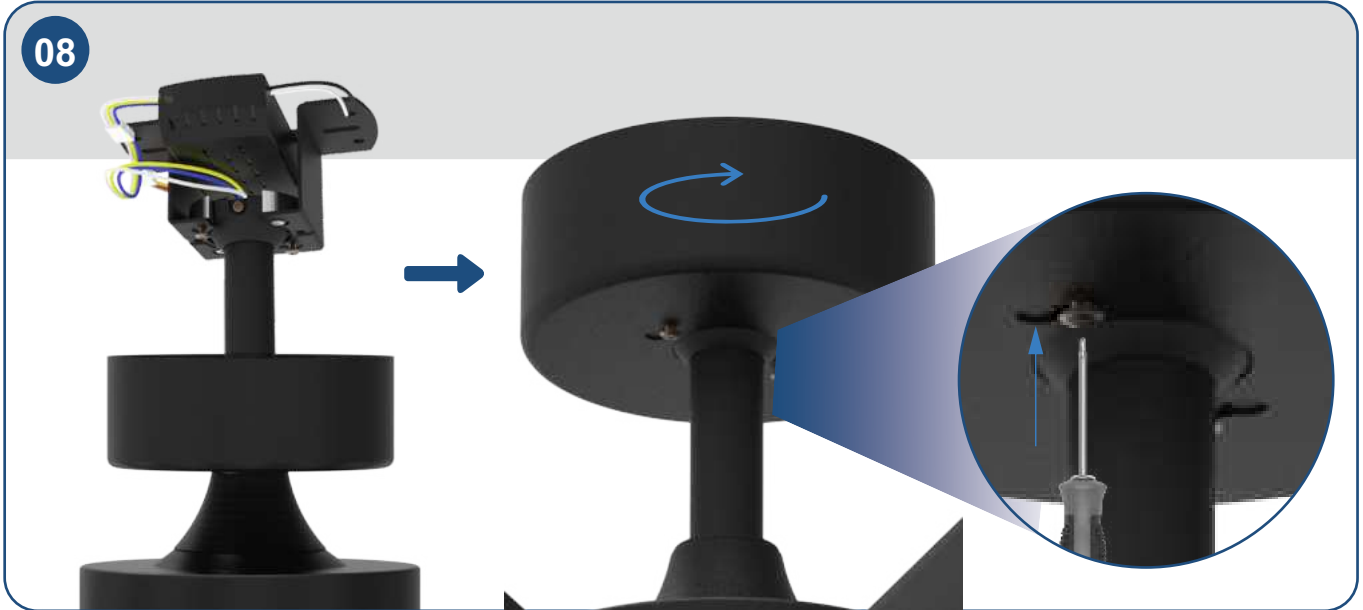
07



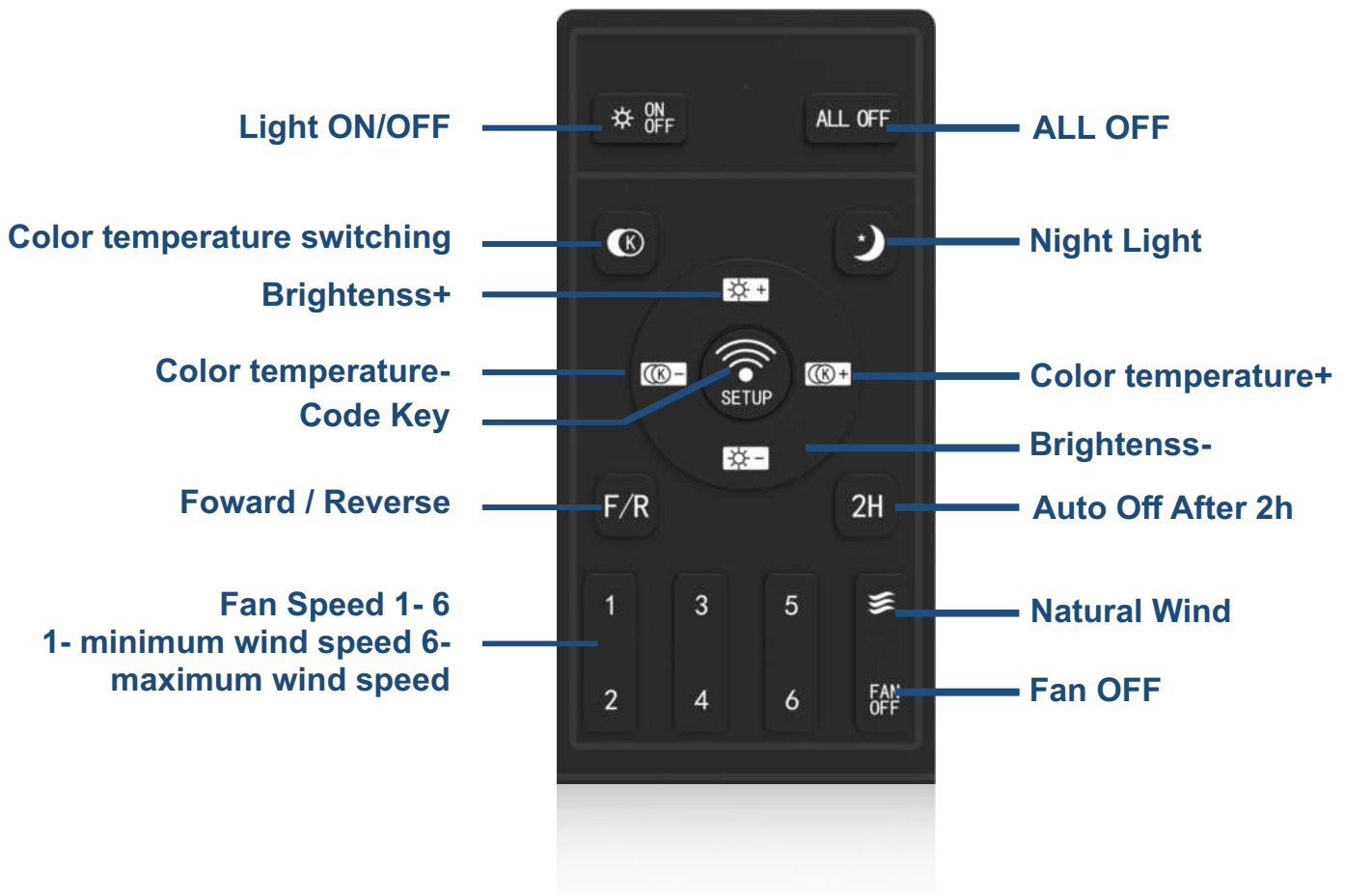


Installation Steps

- Hanger Bracket
- Blades
- Light Kit
- Downrod & Motor




Good, you have now completed all the installation work, turn on the power and start using it!



Points For Attention



- Install 1.5*2 volt battery(not included)
(To prevent damage to transmitter, remove the battery if not used for a long time)
- Do not place the remote control in an excessively hot or humid environment
- Remote control learning code method:
Your remote control and ceiling fan light have been successfully paired initially. If you find that the remote isn't working properly during use, you can re-pair them by following these steps:


Step 1: Turn off the wall control switch (Power source) .
Step 2: Turn on the wall control switch (**Code Key**), press and hold the "  " for 5 seconds until you After hearing three "beeps" This indicates that the pairing process has been successfully completed.
- If the product you purchased is a version without a lighting system, the buttons on the remote control related to the lamp will have no practical function.



App Control

Points For Attention



- **Connecting with mobile phone APP**
- Make sure that your Bluetooth are enable when using the Smart Home Light.
- **Bluetooth connection**
Power off the receiver for 5 seconds Turn on the power and immediately press the key of  for 1 second then learn successfully.



Your fan may occasionally jerk forward or backward upon starting up, This is normal and does not affect the fan operation, Try these troubleshooting steps before contacting customer service.

Problem ▶	Solution
Fan not spinning	<p>Make sure the fan is getting power. Check your circuit breaker or fuse panel and wall switch for functionality. Check to make sure the fan wires are correctly connected to the house wires. Remote control must be paired with the fan within 1 minute after connecting the fan to the electrical. Use a multimeter and test the adapter wiring harness to see if there is any electrical output. All the pin wiring on the circuit board must be inserted tight and in the correct position. Make sure the fan blades spin freely. If you're using a wall control, check the power to the breaker from your control and try working your ceiling fan manually. (Normal switch only for the fan power on/off)</p>
Fan light not working	<p>Make sure LED wires are connected to the circuit board. Make sure the whole fan is powered.</p>
The fan is noisy and wobbling	<p>Check if the blade screws are NOT rubbing against any part of motor housing. Check the pin wires are NOT connected against any moving parts. Check the down fan cup is NOT hitting the motor. Confirm the canopy is NOT touching the ceiling while the fan is in operation. Check the down rod is NOT slanted. Tighten any loose screws on the light kit, fan blades, motor coupling, down rod, brackets and mounting hardware. Confirm the hanger ball is firmly seated in the mounting bracket. The ceiling beam must meet the minimum tensile test strength of 30KG for installation. Verify the wire connections are not rattling against each other. Verify the fan blades are not cracked, If the fan blades are cracked, replace the damaged blades with a new blade set from the same brand as your ceiling fan to ensure compatibility Confirm the light kit is NOT slanting and hitting the motor.</p>
The fan or light automatically turns on/off	<p>Confirm the circuit breaker is not malfunctioning. Verify the wire connections are not frayed. Check the app is not set to a timer or schedule. Cut the fan power for 10 minutes then power on again. All the pin wiring on the circuit board must be inserted tight and correct position.</p>