

ASSEMBLY INSTRUCTIONS

Desk

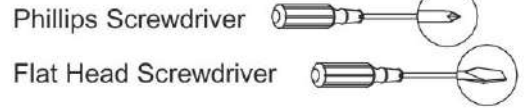
ASSEMBLY
REQUIREMENTS

2 HOURS
Assembly Time
(Approximate)

2 -Person Assembly



Tools Required (Not Provided):



Thank you for purchasing our product!

Please refer and use this assembly instruction to assemble the product.
Contact our customer service department in case there are any missing or damage parts or hardware.
Replacement parts are normally shipped within 2 or 3 days.

We appreciate your business!

ASSEMBLY PREPARATION

1. Remove all packaging materials, staples and packing straps from the carton.
2. Refer to Parts List and Hardware List and ensure they are complete before you start assembling.
3. Place all wooden parts on a clean, flat and soft surface (e.g. carpet or rug) to prevent parts from getting scratched.

SAFETY PRECAUTION:

1. KEEP ALL HARDWARE PARTS OUT OF REACH OF CHILDREN.
2. DISPOSE PLASTIC PACKAGING MATERIAL IMMEDIATELY TO AVOID ANY RISK OF SUFFOCATION TO CHILDREN AND ANIMALS.

TIPS FOR ASSEMBLY:

1. Allow ample room for assembly and in close proximity to where product will be placed.
2. Assemble the product on a surface that does not scratch or damage the exterior gloss and finish of the furniture.
3. Please check all of the parts and quantities are included before assembly. Contact customer service for missing parts.
4. Identify all of the parts, hardware and quantities required for each step.
5. During assembly, do not over-tighten any fittings as this may cause damage.
6. DO NOT USE POWER TOOLS TO ASSEMBLE THIS PRODUCT.
7. Always place the product on a flat stable surface.
8. Do not sit or stand on the partially assembled product; only use the product for which it is intended.
9. This product is made of reinforced hollow board. Excessive pressure can cause irreparable damage. Avoid standing or kneeling on any parts of the product during assembly.

CARE AND MAINTENANCE

- Use a slightly damp cloth to clean the product. Do not use bleach or abrasive cleaning material.
- Check all the fittings periodically and re-tighten as necessary. Do not use the product if any of the parts is damaged or broken.
- Never allow any kind of liquid to remain on your furniture. Absorption can cause wood to warp or delaminate.
- Do not place hot items (e.g. hot drinks) directly onto the wood surface.
- Do not drag and/or pull the furniture.

This product is for indoor and household use only - not for commercial use.

ASSEMBLY INSTRUCTIONS

Desk



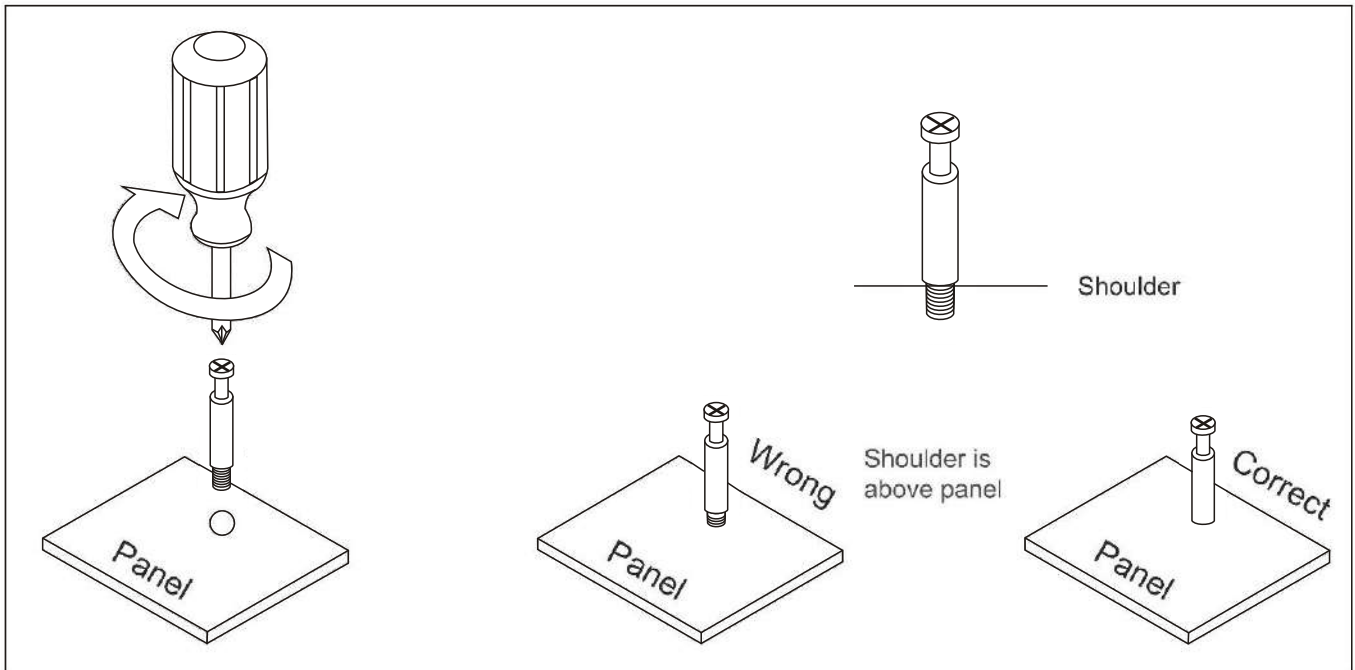
Do Not Use Power Tools

Hardware List	Parts List			
A 23pcs B1 M6X30mm 2pcs B2 M6X25mm 4pcs B3 M6X20mm 4pcs C ST3. 5X12mm 8pcs D ST3. 5X25mm 2pcs E E1 E2 Runner 2pcs F ST5X50mm 19pcs G M4X25mm 1pc H M4mm 1pc I M6mm 4pcs J 4pcs	① Left Metal Frame 1pc	② Right Metal Frame 1pc	③ Horizontal Support 1pc	④ Cross Support 2pcs
	⑤ Top Panel 1pc	⑥ Bottom Panel 1pc	⑦ Back Panel 1pc	⑧ Left Side Panel 1pc
	⑨ Right Side Panel 1pc	⑩ Left Middle Panel 1pc	⑪ Right Middle Panel 1pc	⑫ Front Drawer Panel 1pc
	⑬ Drawer Left Side Panel 1pc	⑭ Drawer Right Side Panel 1pc	⑮ Drawer Back Panel 1pc	⑯ Bottom Drawer Panel 1pc

ASSEMBLY INSTRUCTIONS

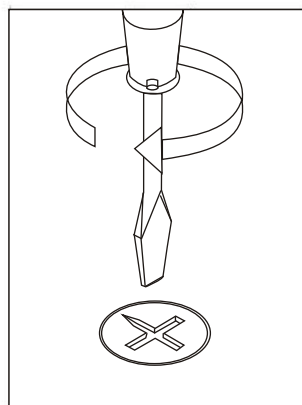
Desk

Instructions For Fastening Cam-bolt



Attach Cam-bolt to the specific pre-drilled hole on the panel. Tighten until shoulder is snug and flushed (on the same level) with panel. Do not over-tighten or under-tighten.

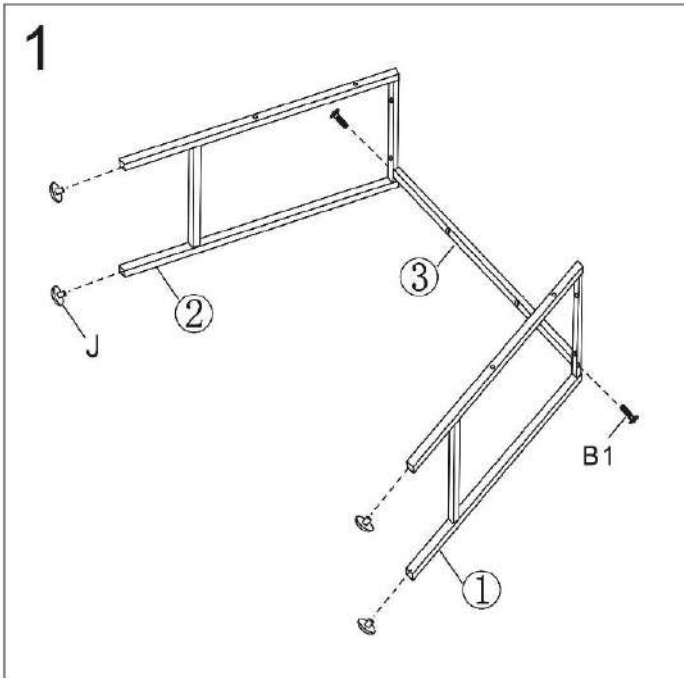
Instructions For Fastening Pre-installed Cam-lock



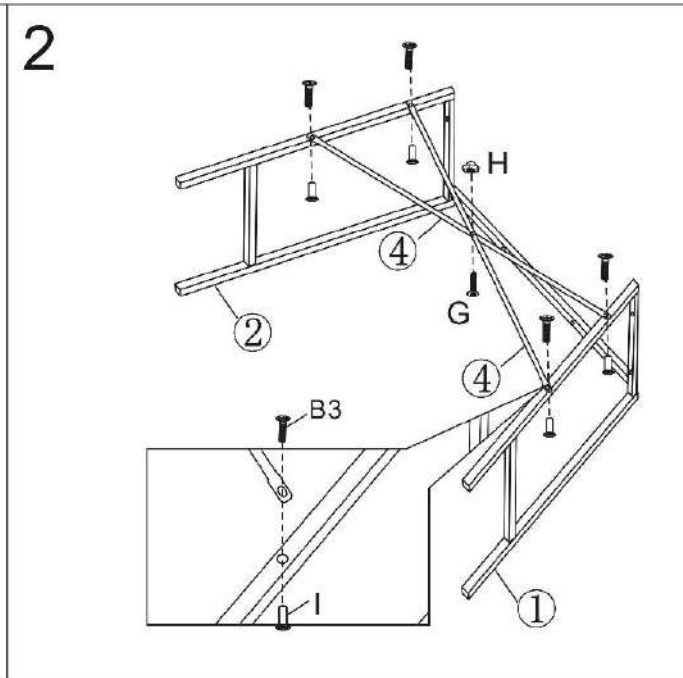
Use a Flat-head Screwdriver to turn the Cam-lock clockwise one half a turn so it locks onto the head of the Cam-bolt. Turn until it is snug. Over-tightening could damage Cam-lock or/and Cam-bolt

ASSEMBLY INSTRUCTIONS

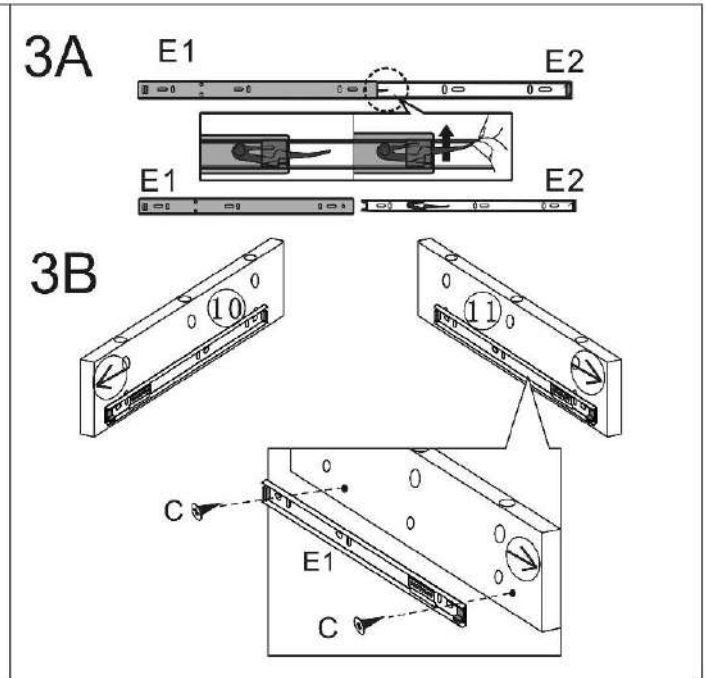
Desk



Position Left & Right Metal Frame (1 & 2) on its side as shown.
 Attach and fasten Horizontal Support (3) to (1 & 2) by using Bolt (B1). Use a Phillips Screwdriver (not provided) to drive (B1). Do not tighten completely at this time.



Place Cross Support (4) as shown.
 Fasten (4) to Left & Right Metal Frame (1 & 2) by using Bolt (3) and Turnbuckle (I)
 Note: Turnbuckle (I) is to be fitted into the designated holes on (1 & 2).
 Do not tighten Bolt (3) completely.
 Secure (4) at the intersection point by using Bolt (G) and Nut (H).
 Next, tighten all of the Bolts (B1, B3 & G) completely at this time.



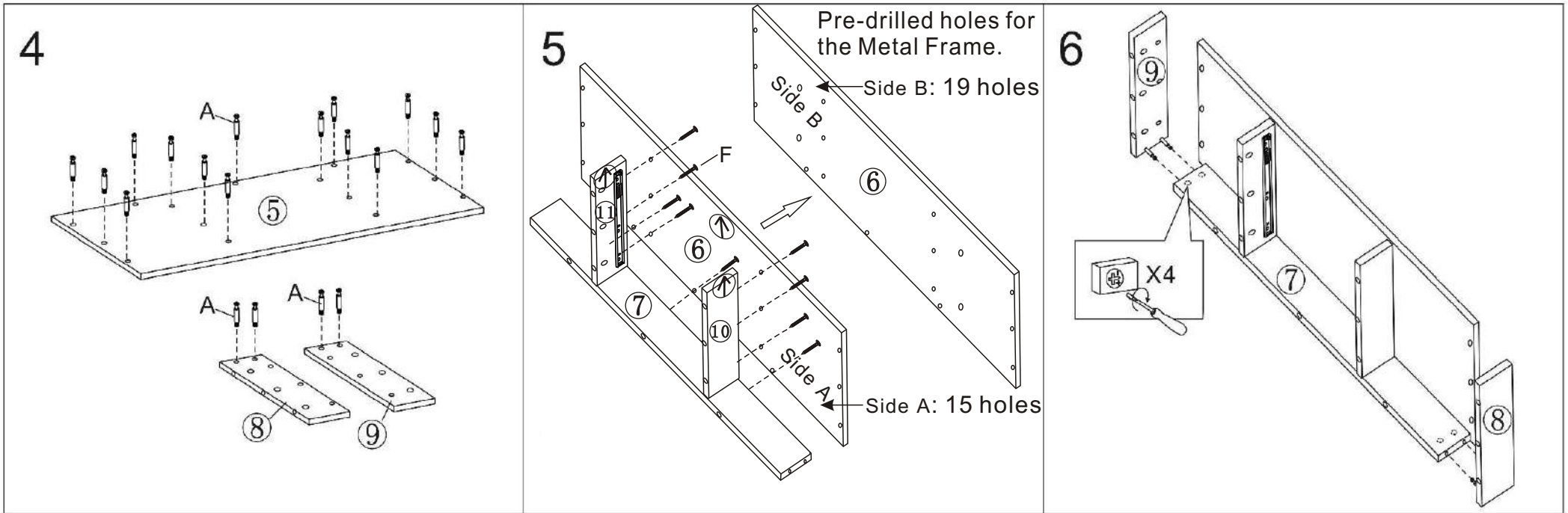
3A: Detach part E2 from part E1 of Runner (E) by depressing or pushing the lever in the groove of part E2 and slide out part E2.

3B: Install part E1 to Right Middle Panel (11).

- a) Position the open/front end of part E1 to the "arrow" direction on (11).
- b) Align the first and last hole on part E1 to the pilot holes on (11)
- c) Use Screw (C) to fasten part E1 to (11).
- d) Use the same procedures above to install part E1 to Left Middle Panel (10).

ASSEMBLY INSTRUCTIONS

Desk



Place Top Panel (5), Left and Right Side Panels (8 & 9) as shown. Insert and tighten Cam-bolt (A) with Phillips screwdriver.

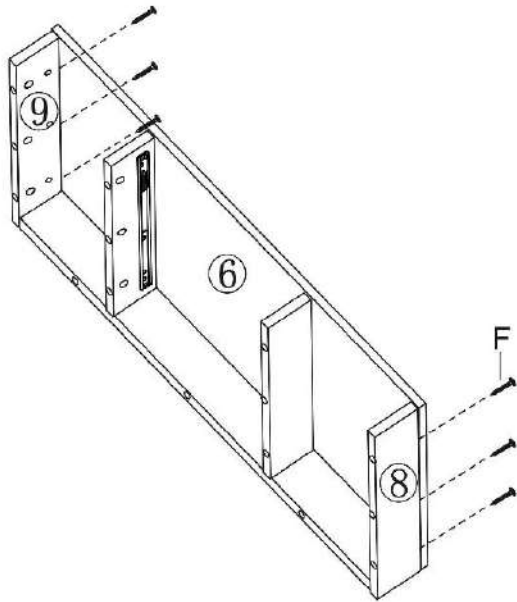
- Position the edge of Back Panel (7) with the screw holes to Bottom Panel (6) as shown. Align the screw holes on both Panels (6 & 7). Fasten with Screw (F). Do not tighten completely until all of the screws are in place.
- Position the edge of Left & Right Middle Panels (10 & 11) with the screw holes to Bottom Panel (6) as shown. Align the screw holes to each respective panel and Fasten with Screw (F). Do not tighten completely until all of the screws are in place.

Insert Cam-bolts on Left and Right Side Panels (8 & 9) to Back Panel (7) as shown. Next, use a Flat-head screwdriver to turn pre-installed Cam-lock clockwise to lock onto Cam-bolt.

ASSEMBLY INSTRUCTIONS

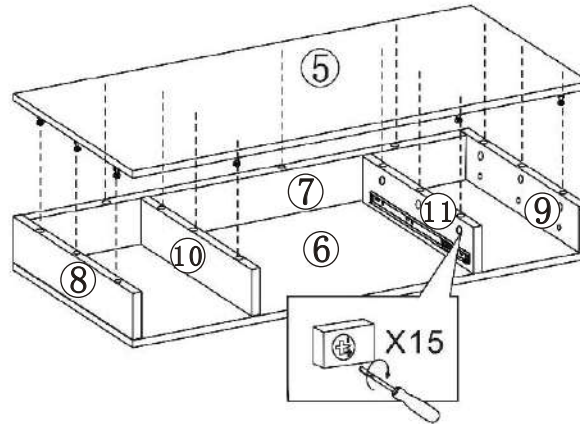
Desk

7



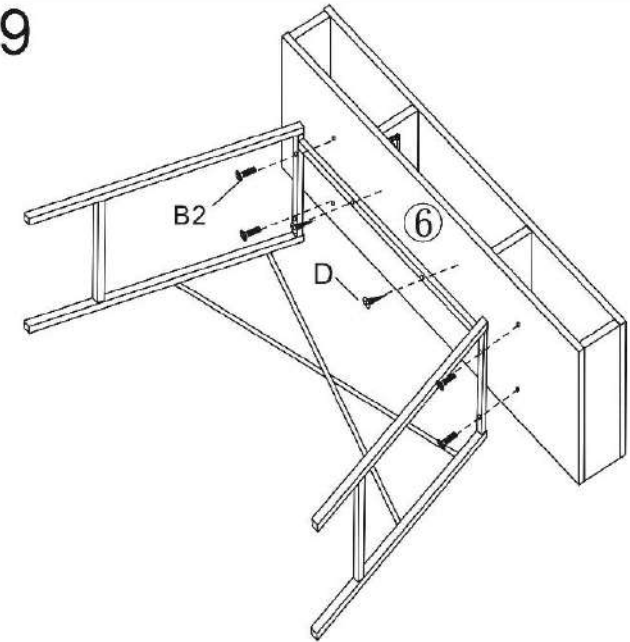
Use Screw (F) to fasten Left and Right Side Panels (8 & 9) to Bottom Panel (6). Do not fasten completely until all of screws are in place.

8



Position Top Panel (5) with Cam-bolts (from Step 4) over the assembly from Step 7 as shown. Align and fit the Cam-bolts (A) into the pre-drilled holes on the top edge of Panels (7, 8, 9, 10 & 11). Use a Flat Screwdriver to turn the pre-installed Cam-locks on the panels clockwise to lock onto the cam-bolts.

9

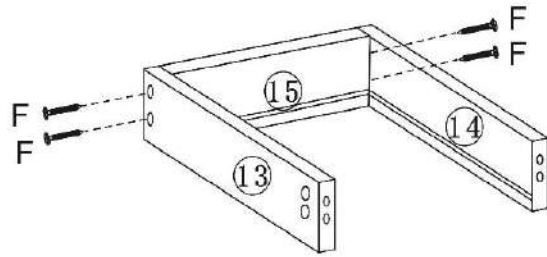


Position the assembly from Step 8 with the desk/drawer opening face up as shown. Next, position the Metal Frame assembly from Step 2 with the Cross Supports on the bottom. Align the pre-drilled holes on Horizontal Support and Metal Frames to the designated screw holes on Bottom Panel (6). Use Bolt (B2) to fasten (6) to Metal Frame and use Screw (D) to fasten (6) to Horizontal Support.

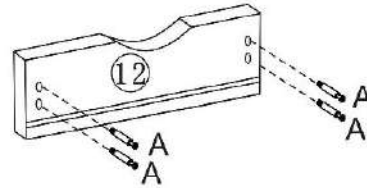
ASSEMBLY INSTRUCTIONS

Desk

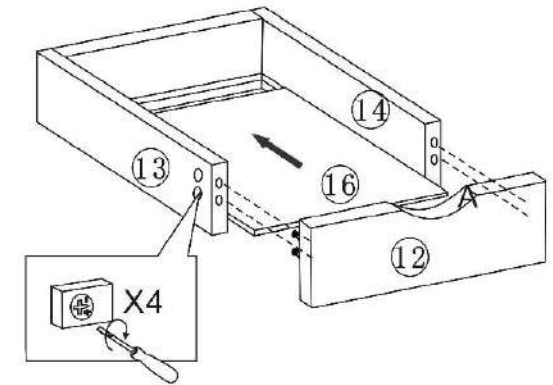
10



11



12



Use Screw (F) to fasten Drawer Left and Right Side Panels (13 & 14) to Drawer Back Panel (15). Do not fasten completely until all of the screws are in place.

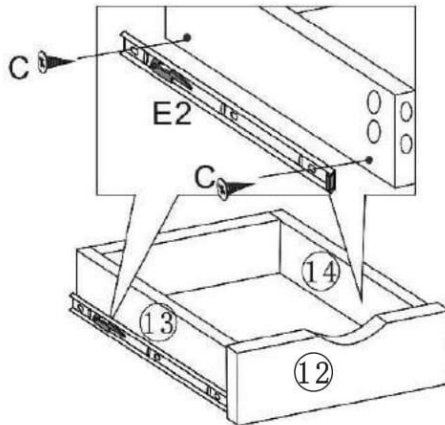
Insert Cam-bolt (A) to the inside face of Front Drawer Panel (12) and tighten with a Phillips Screwdriver.

Insert Bottom Drawer Bottom Panel (16) via the grooves on (13), (14) and (15). Next, fit the Cam-bolts (A) on Front Drawer Panel (12) into the pre-drilled holes on (13) & (14) as shown. Check that (16) fits into the groove on the inside face of (12). Use a Flat Screwdriver to turn pre-installed Cam-locks on (13) & (14) clockwise to lock onto Cam-bolts.

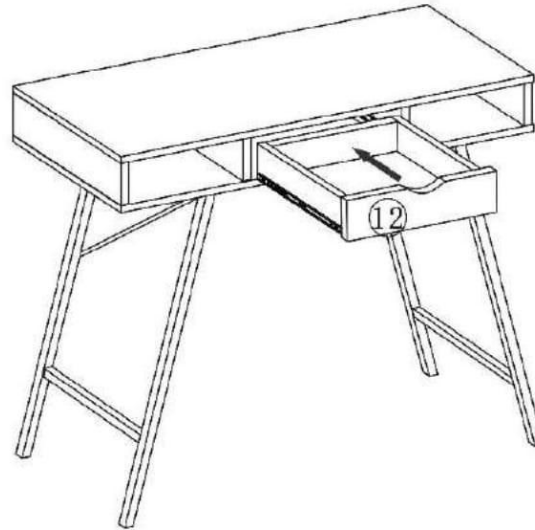
ASSEMBLY INSTRUCTIONS

Desk

13



14



15



- Position part E2 to the bottom edge of (13) with the closed/front end of part E2 to Front Drawer Panel (12) as shown.
- Align the first and last hole on part E2 to the pilot holes on (13)
- Use Screw (C) to fasten part E2 to (13).
- Use the same procedures above to install part E2 to (14).

- Position the drawer squarely to align part E2 on the drawer side to part E1 on the middle panels.
- Gently push in the drawer to allow part E2 to slide into part E1.

The assembly of the Desk is complete.