






ASSEMBLY INSTRUCTIONS

MEDIA CHEST

Young children may be injured by tipping furniture and the use of a tipping restraint is highly recommended. This hardware, when properly installed, could provide protection against the unexpected tipping of furniture due to improper use..

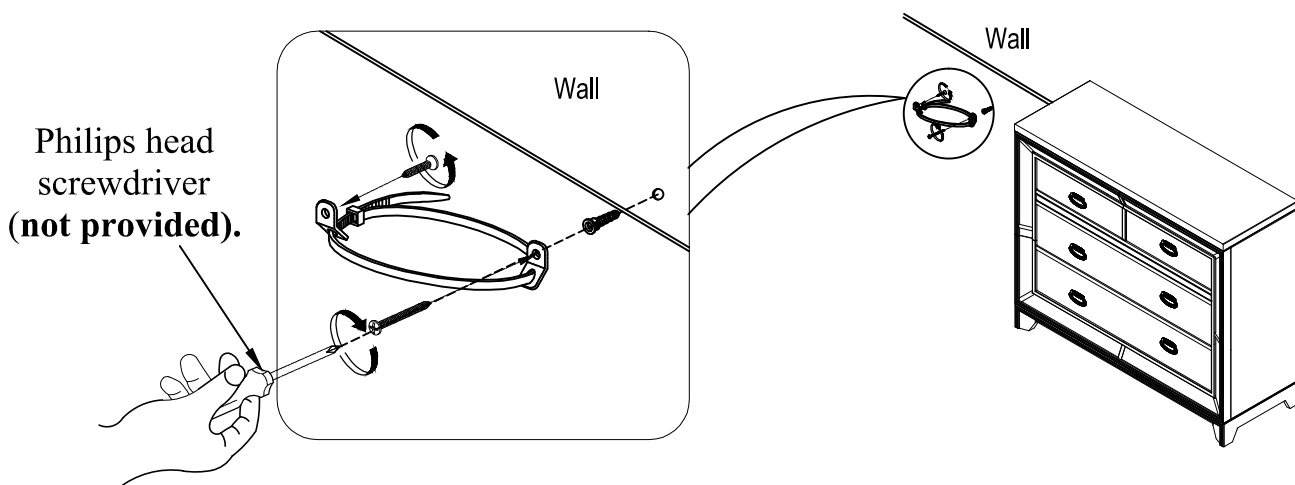
WARNING: This product is only a deterrent. It is not a substitute for proper adult supervision.

For safety, we recommended using the tipping restraint.

HARDWARE LIST/LISTE DE QUINCAILLERIE			
E		Brackets	2 PCS
F		Tipping Restraint	1 PC
G		Phillip screws M4 x 25mm	1 PC
H		Phillip screws M4 x 17mm	1 PC
K		Plastic anchors	1 PC

INSTALLATION INTRUCTION

1. Attach one of the mounting brackets securely to the top back edge of the furniture. use the shorter screws.
2. Determine where furniture is to be placed and mark location on the wall for the mounting bracket screw hole approximately 2" below the bracket mount and to the edge of the furniture.
3. Drill a 3/16" hole into the wall. Press the plastic anchor into the hole and gently tap until the flange on the anchor is against the wall surface.
4. Position the bracket over the anchor and use the longer screw to securely attach the bracket to the wall.
5. Place the furniture so the bracket on the back edge is in line with the bracket on the wall.
6. Lace an end of the nylon restraint strap down through each bracket. Bring both ends together and slide the beaded end of the strap through the keyhole shaped slot in the other end until snug. Pull down on the beaded end until it snap locks into the keyhole slot.
7. To double lock return the beaded end back through the keyholes as shown.
8. Check to make sure the strap is securely laced and locked to the brackets.



CLEANING INSTRUCTION

Clean the surface with a furniture polish and a soft cloth.