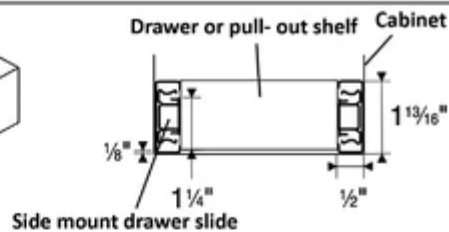
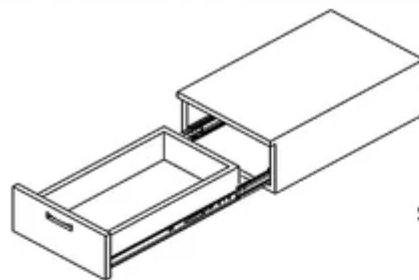


Drawer Slide



Before You Begin

- Read the Do-It-Yourself Installation Instructions completely before starting.

Recommended Tools

- Screwdriver
- Pencil or Scribe
- Ruler
- Level

Specifications

- Drawer pull-out shelf must be 1/2" narrower than cabinet opening on each side.
- Top and bottom of drawer or pull-out shelf bottom should have 1/8" minimum clearance from the cabinet opening.

1. Marking and Aligning Drawer Member

Mark a line 1-1/4" from the bottom of the drawer. Align the top of the drawer member over the marked line.

2. Installing Drawer Members to Drawer or Pull-Out-Shelf

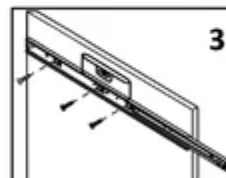
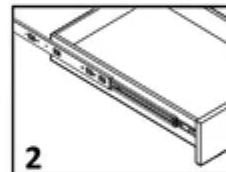
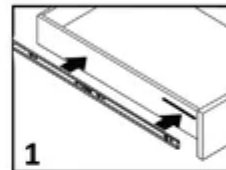
On drawer place and align drawer member into position. Place drawer member end flush with the drawer overlay. Fasten each drawer member with three #6 pan head wood screws.

3. Installing Cabinet Members to Cabinet

Press release lever to disconnect drawer members. Using a level place and align cabinet member into position and place side flush with the cabinet edge. Fasten each slide with three #6 pan head wood screws. You will need to move the slide member back and forth to access the screw holes. For supporting heavy objects use five #8-32 machine screws and inserts to avoid tear out of slide.

4. Inserting Drawer

Insert drawer into cabinet and close. The drawer slide release lever will lock as drawer is closed. Make sure drawer aligns properly and rides smoothly on the side mount drawer slides.



 **berta**