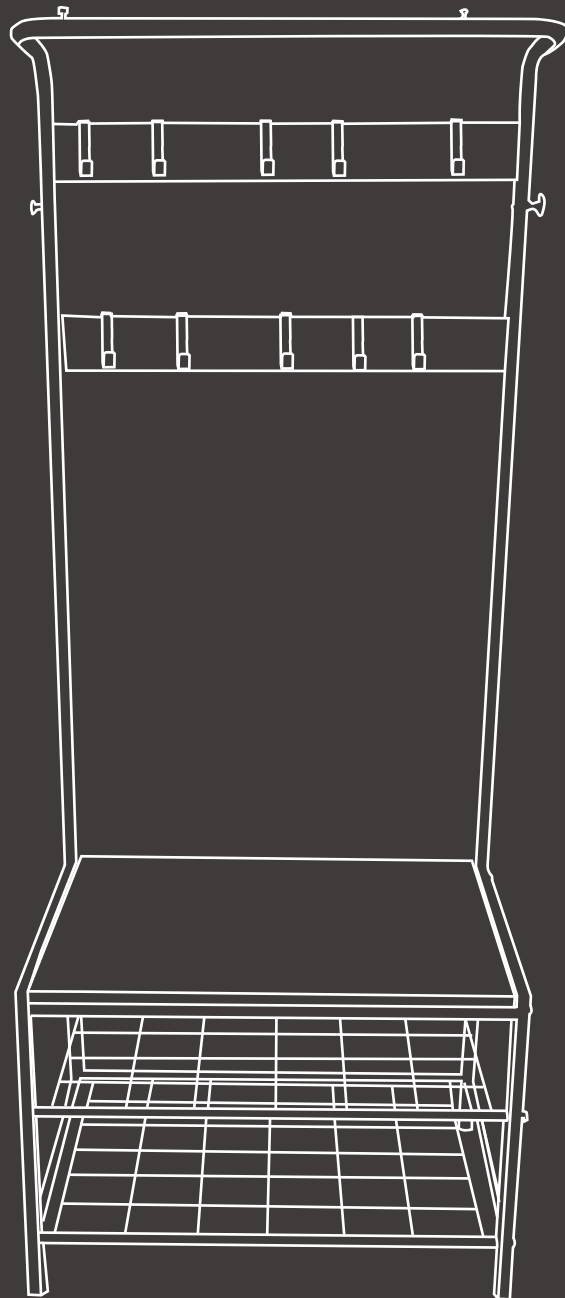
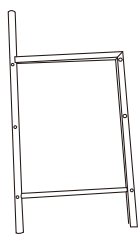


Coat Rack

Instruction Manual



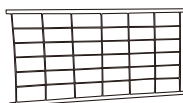
PARTS LIST



① x2



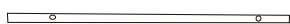
② x2



③ x2



④ x2



⑤ x1



⑥ x1



⑦ x1



⑧ x2



⑨ x1

SUPPLIED PARTS AND HARDWARE



M6*12mm

Ⓐ x8



Ⓑ x10



Ⓒ x2



Ⓓ x2



Ⓔ x4



M6*35mm

Ⓕ x4



M6*30mm

Ⓖ x12



Ⓗ x1



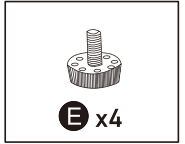
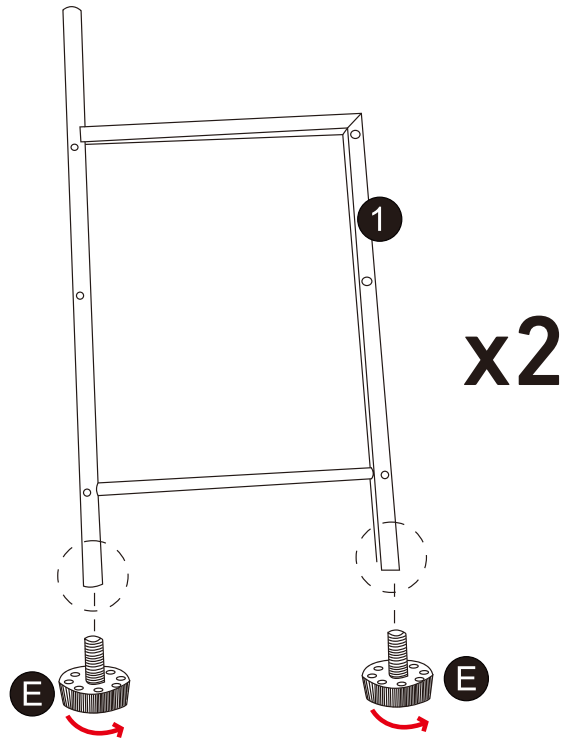
Ⓘ x8



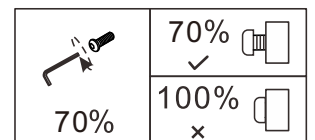
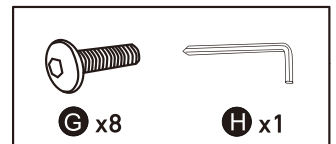
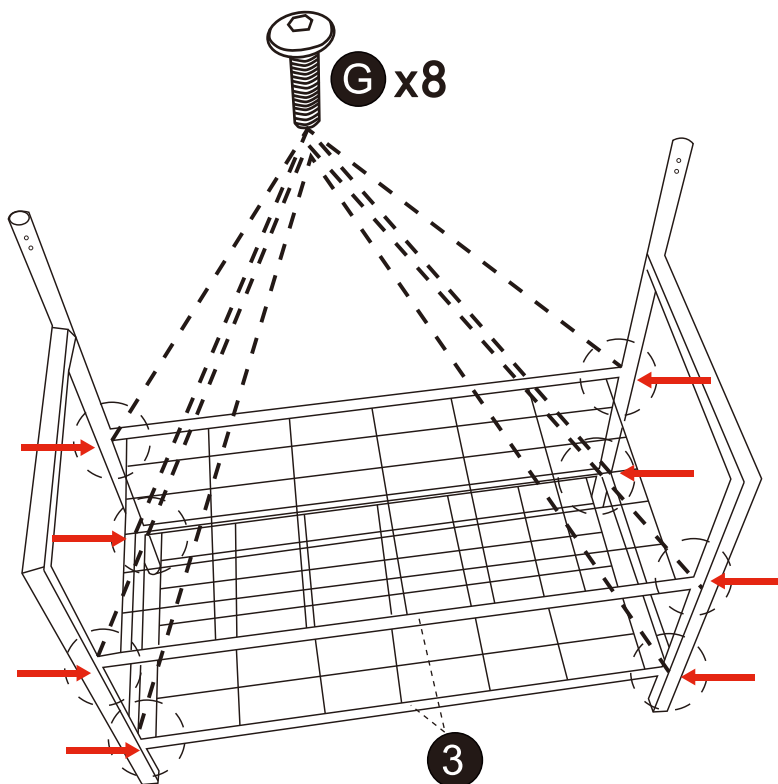
Ⓙ x2

ASSEMBLY INSTRUCTION

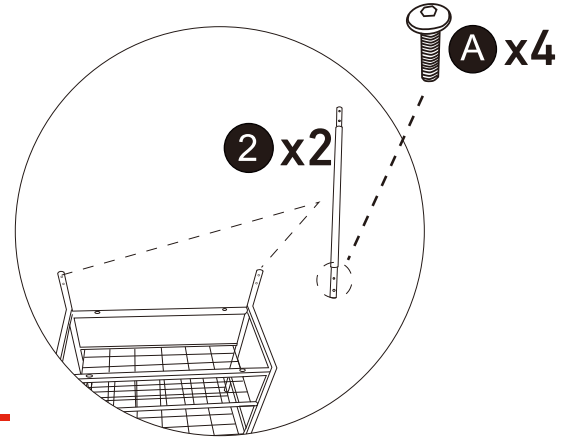
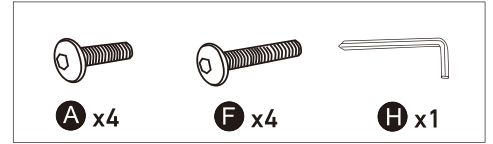
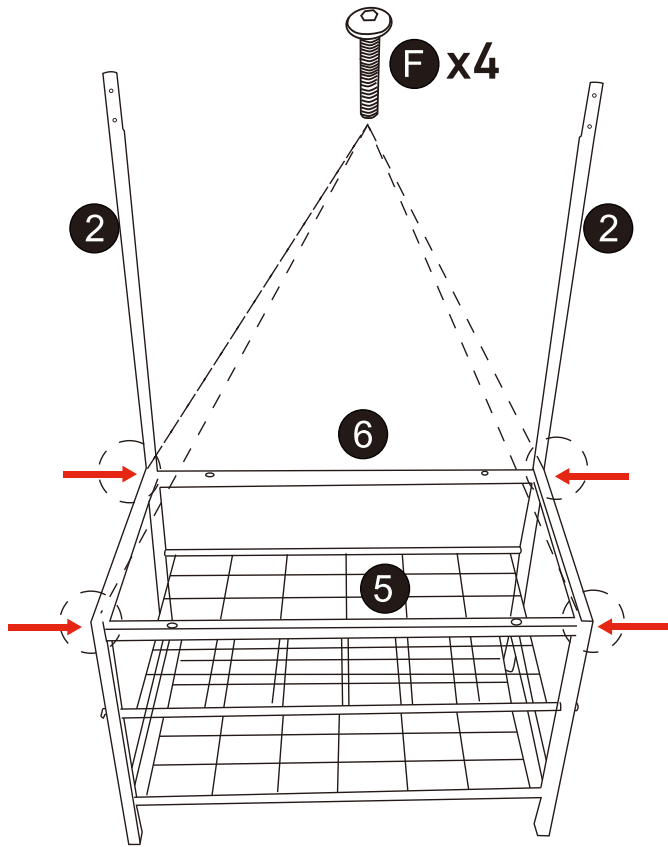
Step 1



Step 2



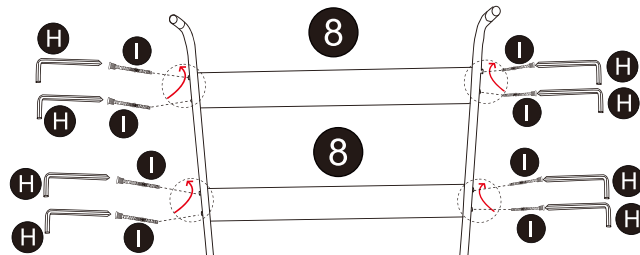
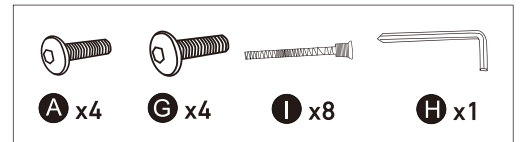
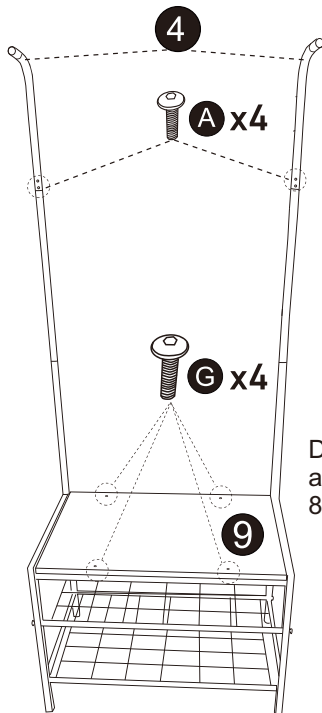
Step 3



	70%
70%	100%

Step 4

Do not tighten the bolts to affect the installation of the 8th plate and the 7th bend pipe

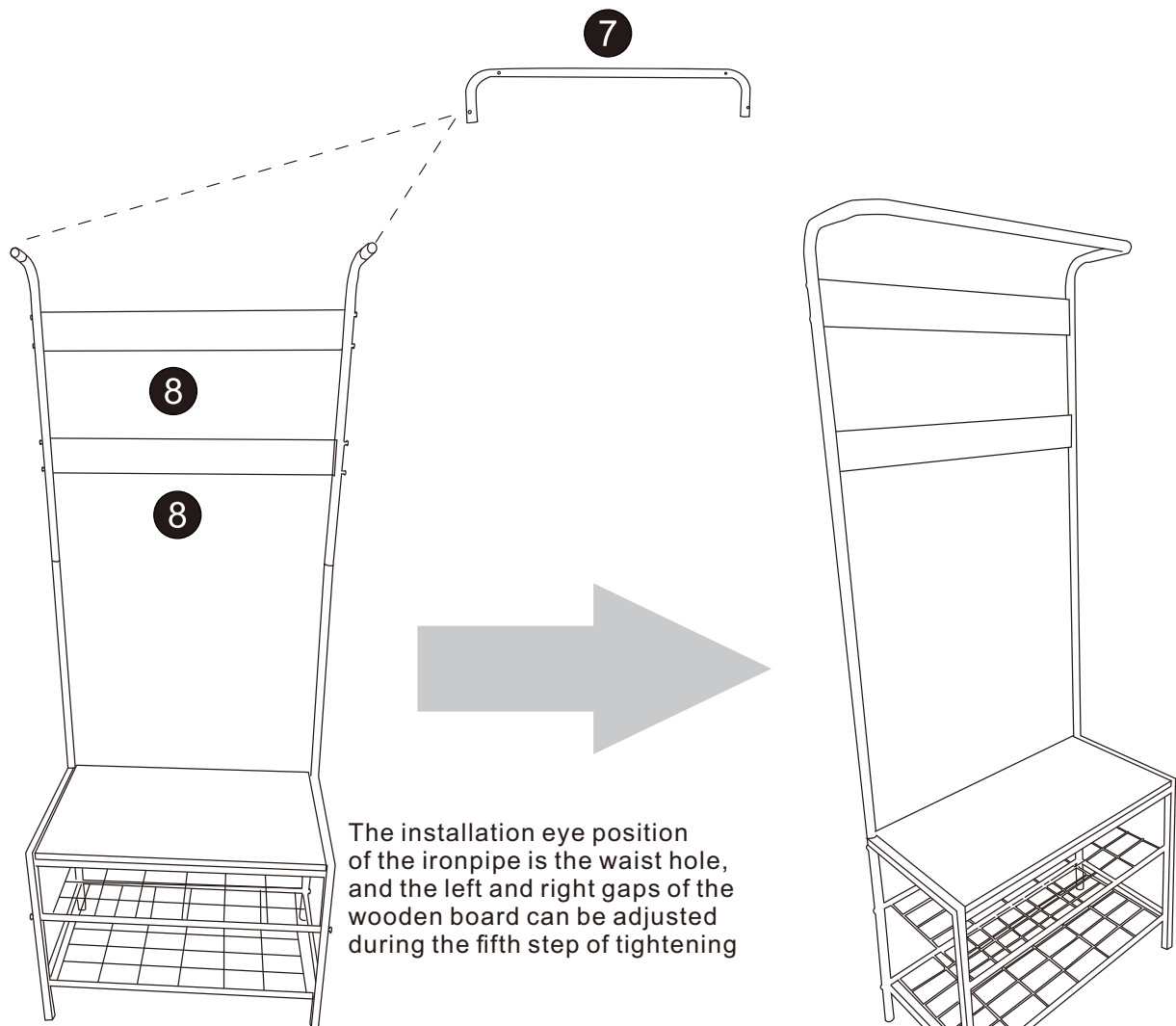


Do not tighten the bolts to affect the installation of the 8th plate and the 7th bend pipe

	70%
70%	100%

NOTE: Install the screws from the bottom of the Board 9.

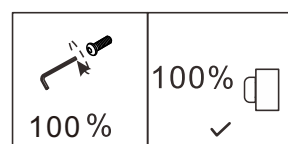
Step 5



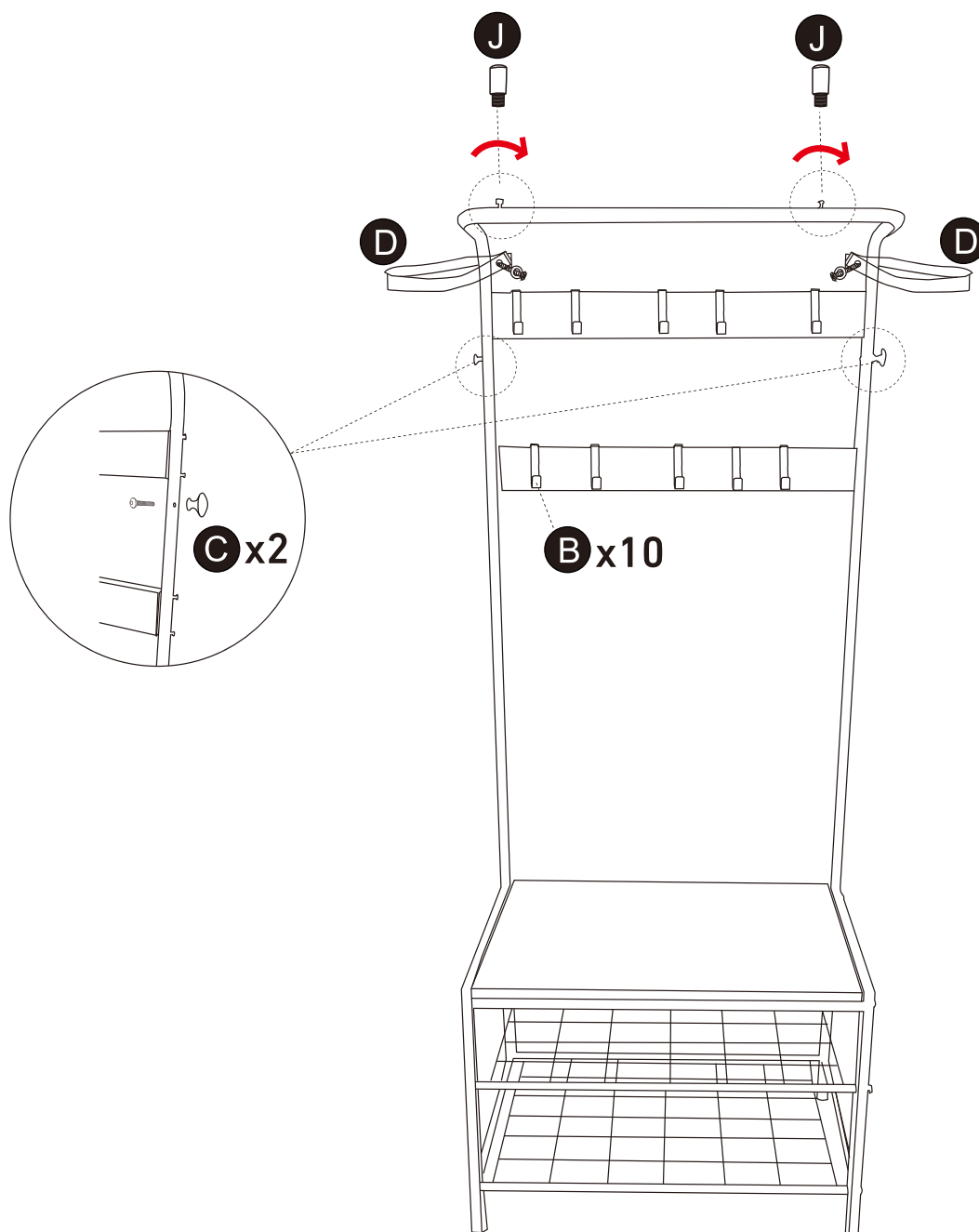
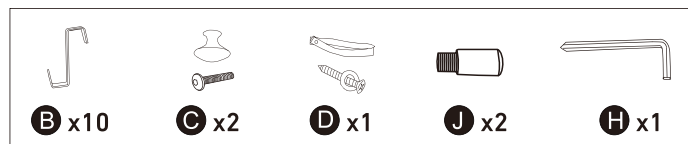
The installation eye position of the iron pipe is the waist hole, and the left and right gaps of the wooden board can be adjusted during the fifth step of tightening

NOTE: The holes on support tube rack 7 must face upward.

While tightening the bolts, adjust the left and right spacing of the wooden board

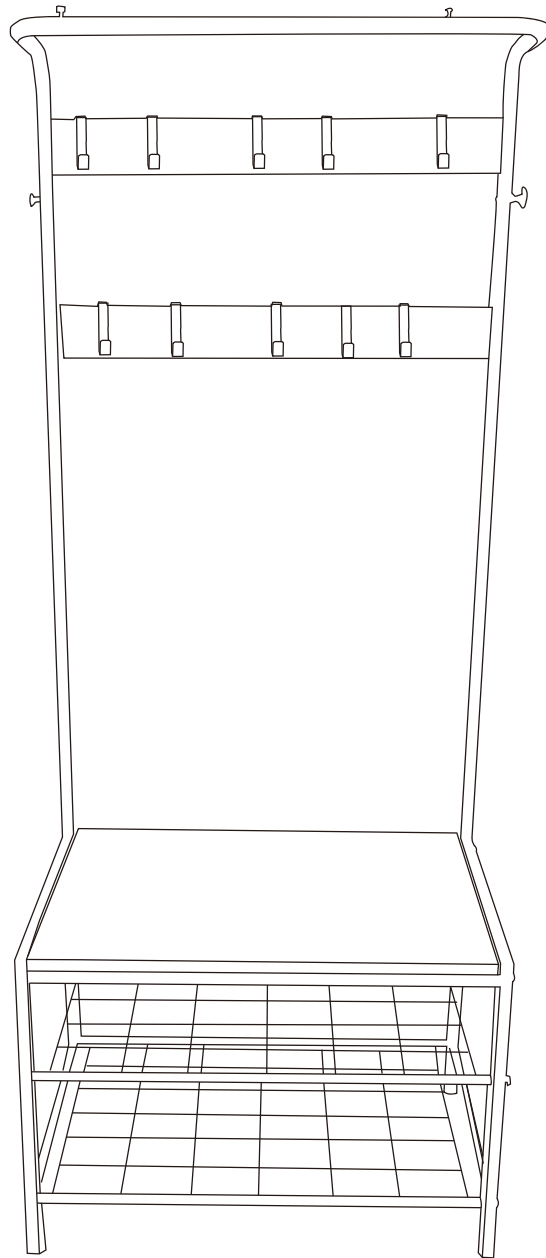


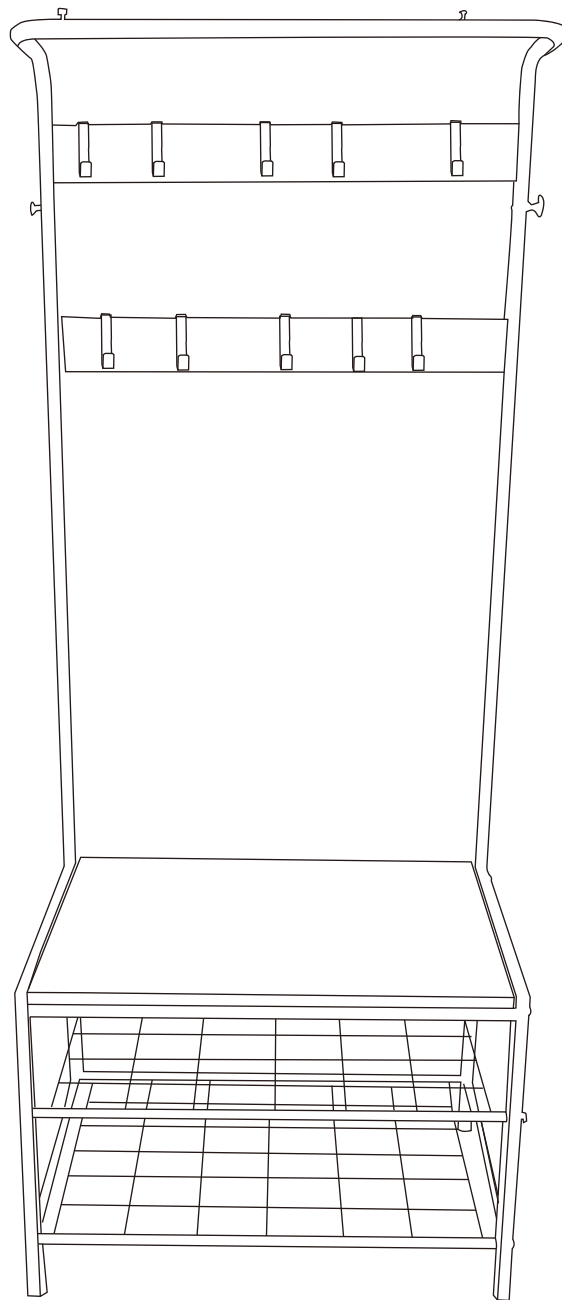
Step 6



NOTE: When installing the anti-tip kit **D**, first drill a hole in the wall. Then loop the strap around the rack, and insert the screw through the washer and the strap into the wall.

Step 7





Thank you for choosing this product. We strive to provide you with the best quality products and service in the industry. Should you have any issues, please don't hesitate to contact us.