

ASSEMBLY INSTRUCTIONS

KITCHEN CART

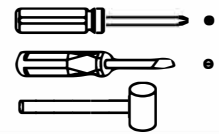
ASSEMBLY REQUIREMENTS:

2-Person
Assembly

2 Hours
Assembly Time
(Approximate)

Tools Required:
(Not Provided)

Phillips Screwdriver
Flat Screwdriver
Mallet



THIS PRODUCT IS FOR INDOOR AND HOUSEHOLD USE ONLY - NOT FOR COMMERCIAL USE.

ASSEMBLY PREPARATION

1. Remove all packaging materials, staples and packing straps from the carton.
2. Refer to Parts List and Hardware List and ensure they are complete before you start assembling.
3. Place all wooden parts on a clean, flat and soft surface (e.g. carpet or rug) to prevent parts from getting scratched.

SAFETY PRECAUTION:

1. KEEP ALL HARDWARE PARTS OUT OF REACH OF CHILDREN.
2. DISPOSE PLASTIC PACKAGING MATERIAL IMMEDIATELY TO AVOID ANY RISK OF SUFFOCATION TO CHILDREN AND ANIMALS.

TIPS FOR ASSEMBLY:

1. Allow ample room for assembly and in close proximity to where product will be placed.
2. Assemble the product on a surface that does not scratch or damage the exterior gloss and finish of the furniture.
3. Identify all of the parts, hardware and quantities required for each step.
4. During assembly, do not over-tighten any fittings as this may cause damage.
5. DO NOT USE POWER TOOLS TO ASSEMBLE THIS PRODUCT.
6. Always place the product on a flat, level surface.
7. Do not sit or stand on the partially assembled product; only use the product for which it is intended.

CARE AND MAINTENANCE

- Wipe clean with a soft, dry cloth; avoid the use of harsh chemicals or household cleaners as they may damage the exterior finish of the furniture.
- Hardware may loosen over time. Periodically, check that all connections are tight; re-tighten as necessary.
- Solid wood is impacted by heat and humidity fluctuations and may result in small joint separations or hairline cracks; place the furniture away from direct sunlight and air conditioning vents, heating vents or units to protect the furniture.

ASSEMBLY INSTRUCTIONS

KITCHEN CART

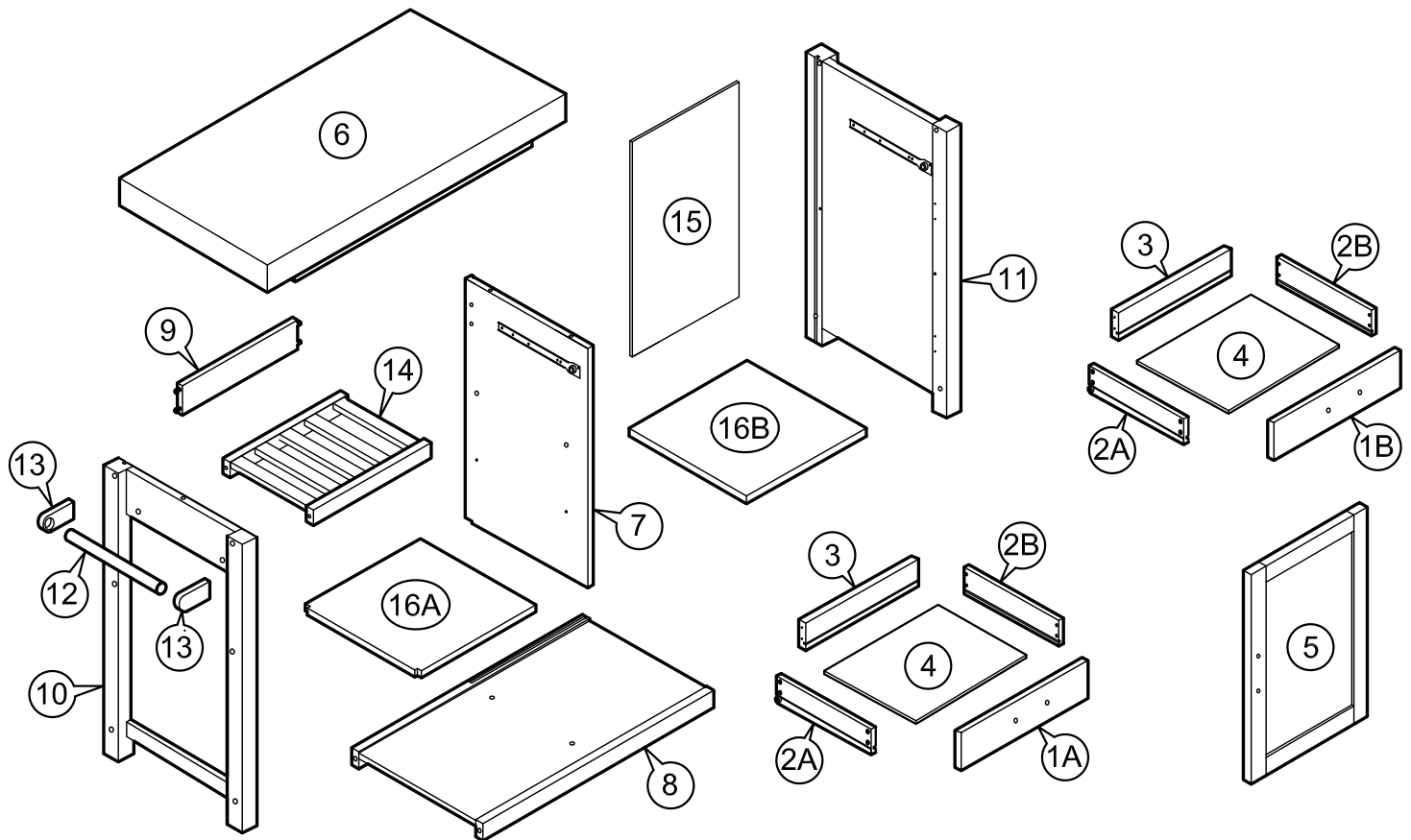
PARTS LIST

Part#	Description	Qty
1A	Drawer Front Panel	1pc
1B	Drawer Front Panel	1pc
2A	Drawer Left Panel	2pcs
2B	Drawer Right Panel	2pcs
3	Drawer Rear Panel	2pcs
4	Drawer Bottom Panel	2pcs
5	Door	1pc

Part#	Description	Qty
6	Wood Top	1pc
7	Center Panel	1pc
8	Bottom Panel	1pc
9	Back Top Rail	1pc
10	Left Panel	1pc
11	Right Panel	1pc
12	Towel Rod	1pc

Part#	Description	Qty
13	Rod Support	2pcs
14	Rack Shelf	1pc
15	Back Panel	1pc
16A	Shelf	1pc
16B	Shelf	1pc

PARTS ASSEMBLY OVERVIEW



Hardware List

DESCRIPTION	QTY	EXTRA	DESCRIPTION	QTY	EXTRA	DESCRIPTION	QTY	EXTRA	DESCRIPTION	QTY	EXTRA
A M6 x 40mm Bolt	2	2	G #8 x 1 1/4" Screw	16	2	M Door Handle	1	-	Q 7/8" Door Hinge	2	-
B M6 x 50mm Bolt	2	2	H M3.5 x 16mm Screw	8	2	N Drawer Handle	2	-	R Allen Key	1	-
C M6 x 60mm Bolt	10	2	I 9mm Cam-lock	4	-	O 50mm Castor with Lock	2	-			
D 1/4" Washer	2	2	J 24mm Cam-bolt	4	-	P 50mm Castor without Lock	2	-			
E M6 x 13mm Barrel Nut	12	4	K Shelf-Pin	8	-						
F 10.5Ø Plug	10	-	L 20mm Screw	6	-						

* Extra hardware for spare use

Instructions For Fastening CAM-BOLT and CAM-LOCK



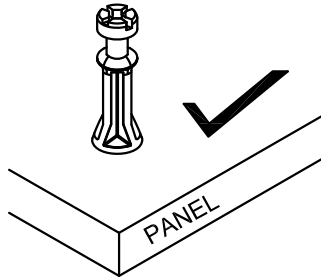
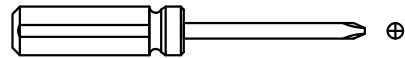
CAM-BOLT



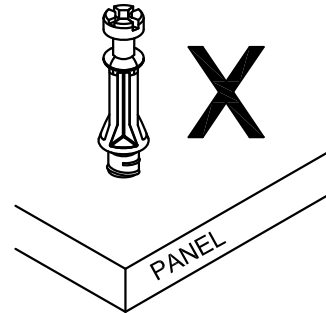
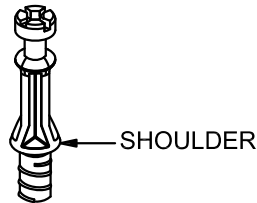
CAM-LOCK

INSERTING AND TIGHTENING CAM-BOLT

Insert Cam-bolt into the pre-drilled hole. Use a Phillips Screwdriver to tighten until shoulder is snug and flushed with the panel. See illustrations below.



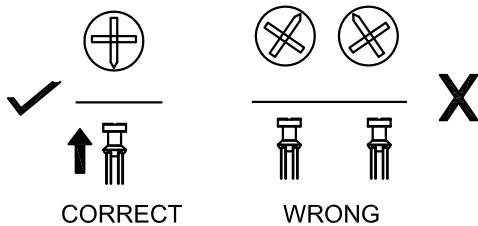
Shoulder is flushed (on the same level) with the panel.



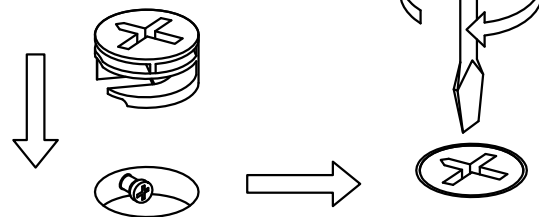
Shoulder is above the panel.

INSERTING CAM-LOCK

Align the arrow on the Cam-lock to the Cam-bolt head and insert the Cam-lock.



TIGHTENING CAM-LOCK

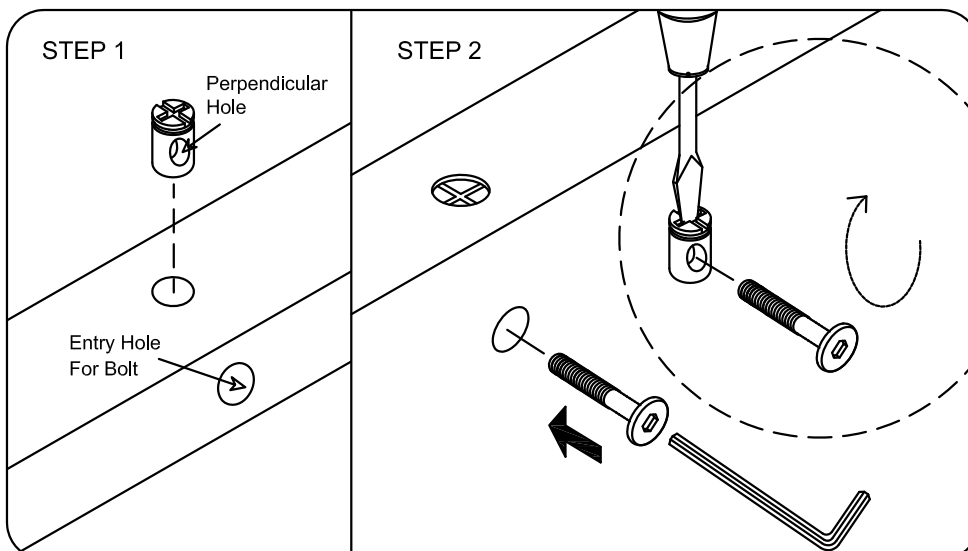


Cam-bolt head needs to be in center

Use a Flat-head Screwdriver to turn the Cam-lock clockwise to lock onto the head of the Cam-bolt. Turn until it is snug -- over-tightening could damage Cam-lock or/and Cam-bolt

Instructions For Installing Barrel Nut

Insert Barrel Nut with the perpendicular hole facing and in-line with the drill hole that the bolt is to be inserted.

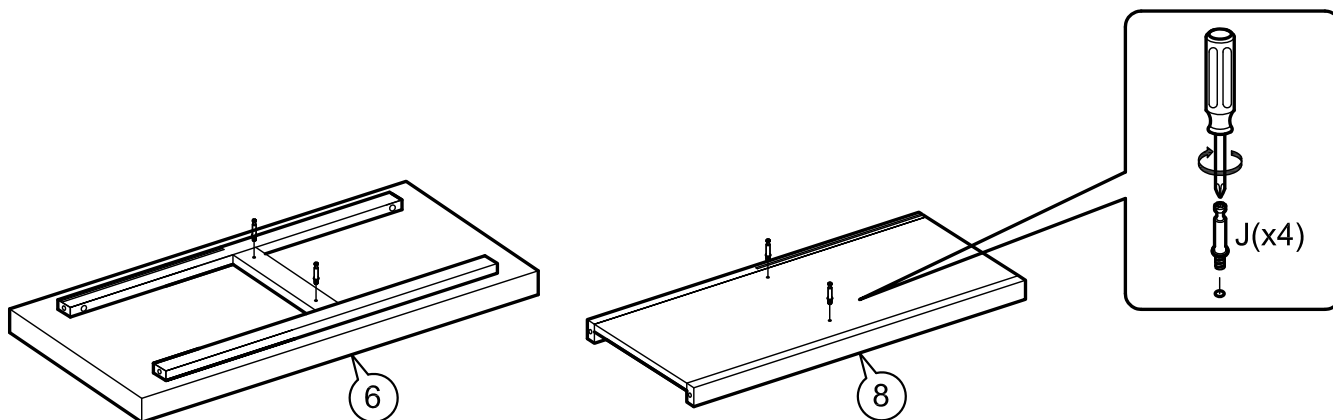


Use a Flat-head Screwdriver to hold Barrel Nut in position before inserting bolt to thread into the Barrel Nut.

ASSEMBLY INSTRUCTIONS

KITCHEN CART

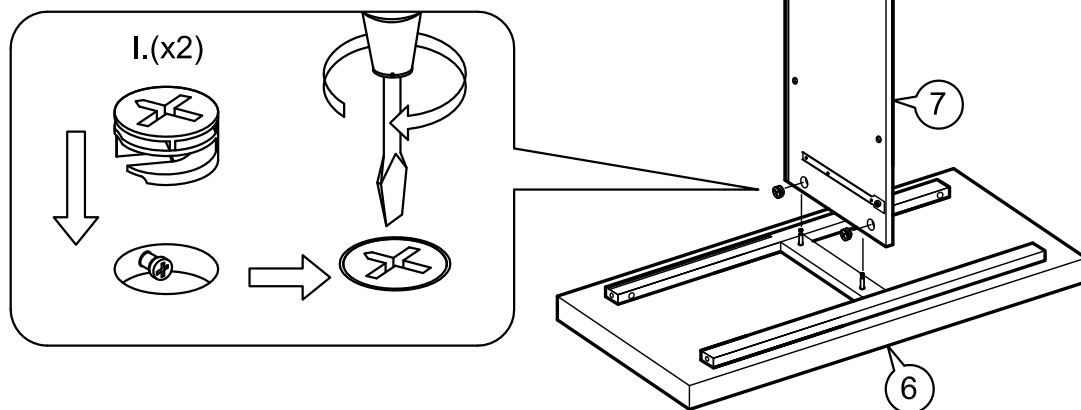
1



- a) Place Wood Top (6) bottom-side up on a material that does not scratch or damage its surface. Insert and tighten Cam-bolt (J) using a Phillips Screwdriver.
- b) Place Bottom Panel (8) as shown. Insert and tighten Cam-bolt (J).

2

Note the orientation
Center Panel -- the
groove edge is on this
side to align with
groove on (6).

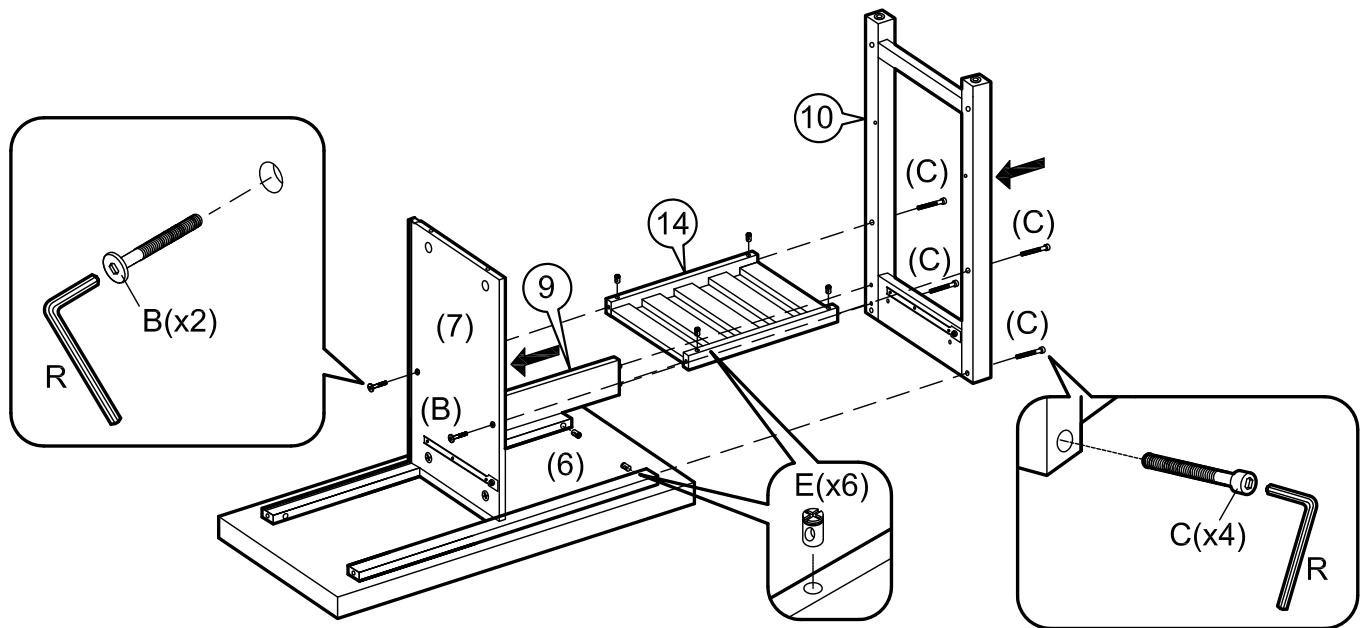


- a) Attach Center Panel (7) to Wood Top (6) by inserting (7) into the Cam-bolts.
- b) Insert Cam-locks (I) into the designated holes and turn clockwise to lock onto the Cam-bolts.

ASSEMBLY INSTRUCTIONS

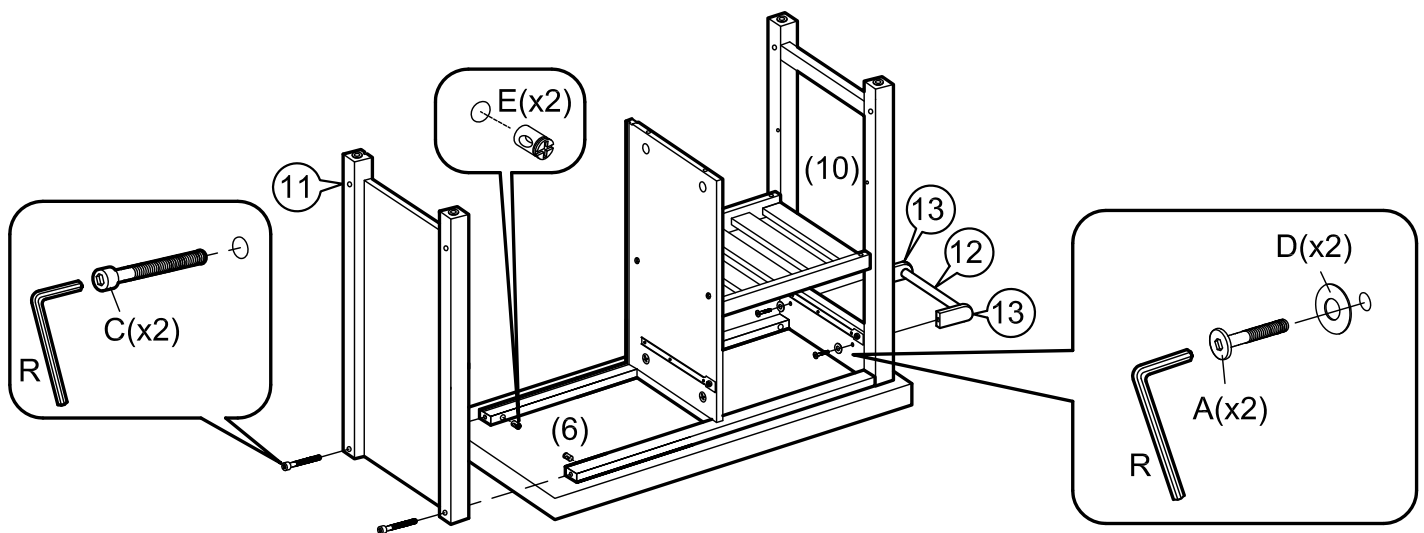
KITCHEN CART

3



- Attach Back Top Rail (9) to Center Panel (7) by inserting pre-installed wood dowels on (9) into designated holes on (7).
- Insert Barrel Nuts (E) into designated holes on Rack Shelf (14) and Wood Top (6) as shown.
- Attach (14) to (7) and fasten by using Bolt (B) to screw into Barrel Nut (E). Use Allen Key (R) to drive (B). Do not tighten (B) completely at this time.
- Position Left Panel (10) to align pre-drilled bolt holes on (10) to those on (14) & (6).
- Fasten (14) to (10) by using Bolt (C) to screw into Barrel Nut (E). Do not tighten (C) completely at this time.
- Use Bolt (C) to fasten (10) to Wood Top (6).
- Tighten all of Bolts (B) & (C) at this time. Do not over tighten.

4

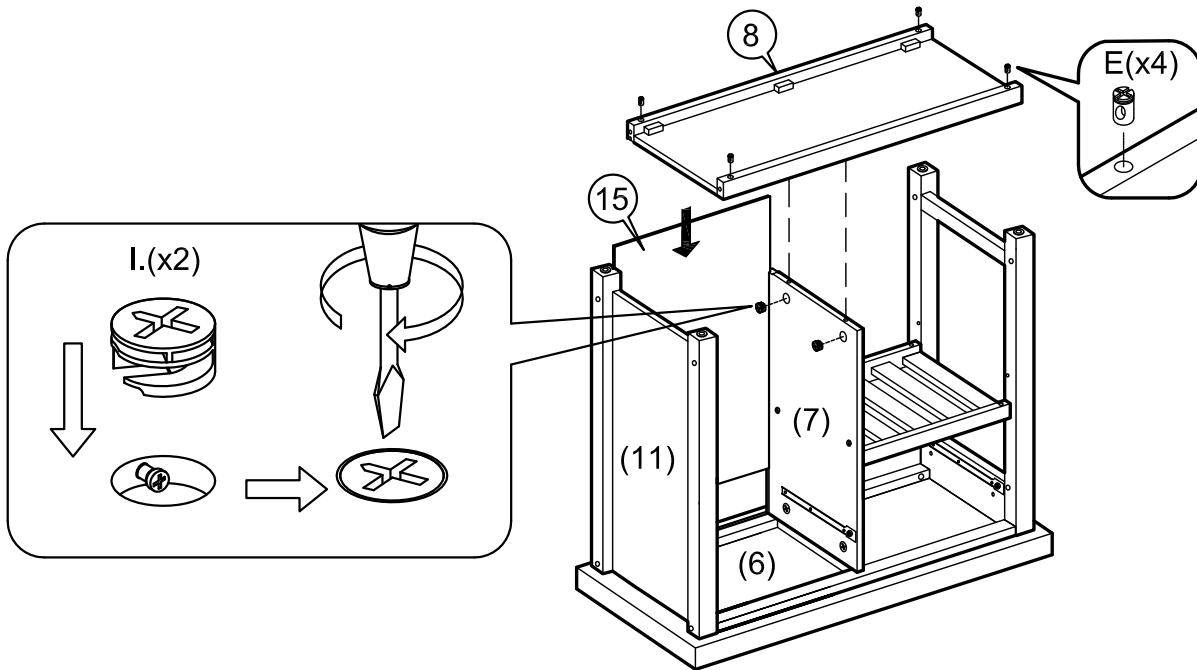


- Insert Barrel Nut (E) to Wood Top (6) as shown.
- Position Right Panel (11) to Wood Top (6) aligning the pre-drilled bolt holes on (11) to those on (6).
- Fasten (11) to (6) by using Bolt (C) to screw into Barrel Nut (E). Do not tighten (C) completely until both bolts are in place.
- Fasten a piece of Rod Support (13) to the designated hole on Left Panel (10) by using Bolt (A) fitted with Washer (D). Use Allen Key (R) to tighten (A). Next, position the second Rod Support (13) to hold Towel Rod (12) in place and fasten (13) with Bolt (A) fitted with Washer (D).

ASSEMBLY INSTRUCTIONS

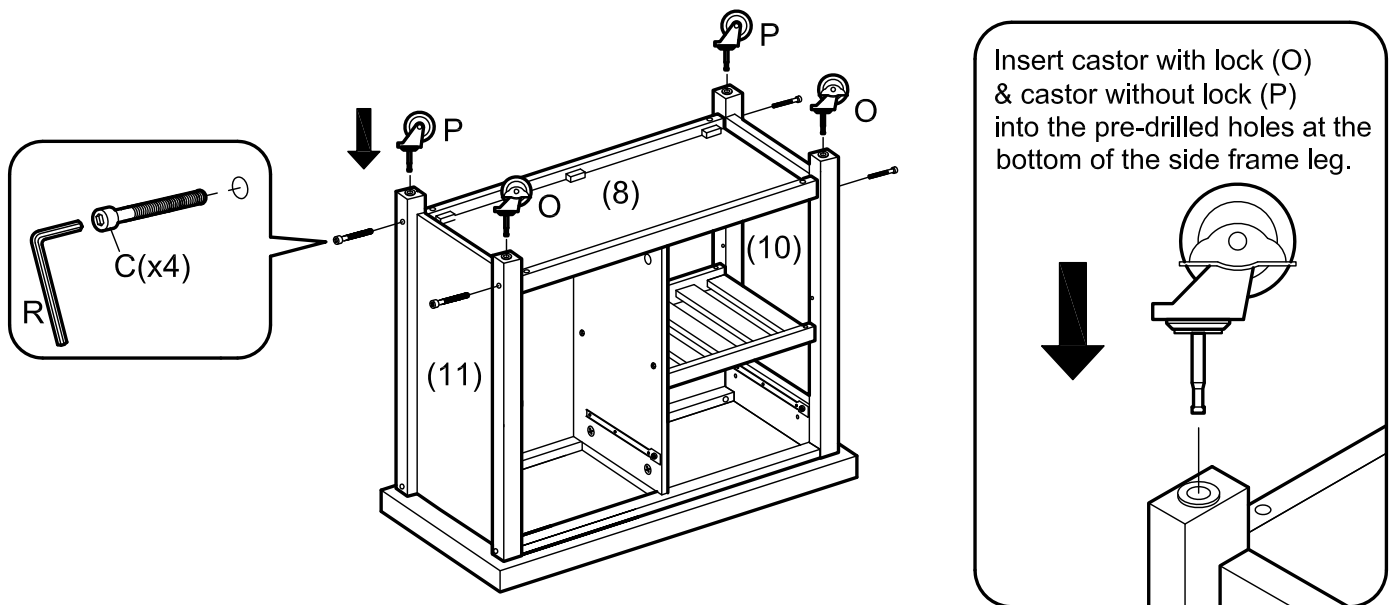
KITCHEN CART

5



- Install Back Panel (15) by inserting (15) into groove on Wood Top (6), Center Panel (7) and Right Panel (11).
- Position Bottom Panel (8) bottom-side up as shown. Insert Cam-bolt (J) on (8) into designated holes on (7) and check that (15) fits into the groove on (8). Insert Cam-lock (I) and turn clockwise to lock onto Cam-bolt (J).
- Insert Barrel Nut (E) into designated holes on (8).

6

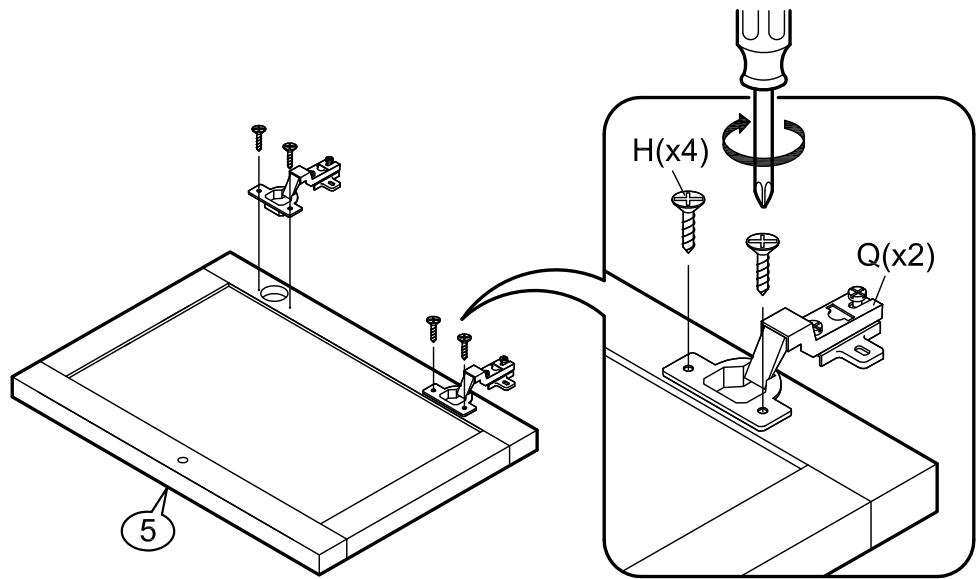


- Fasten Bottom Panel (8) to Side Panels (10) & (11) by using Bolt (C). Use Allen Key (R) to drive (C) into Barrel Nut (E). Do not fasten (C) completely until all the bolts are in place.
- Install Castor with Lock (O) and Castor without Lock (P) by inserting stem of castor into designated hole on bottom of side frame leg as shown.

ASSEMBLY INSTRUCTIONS

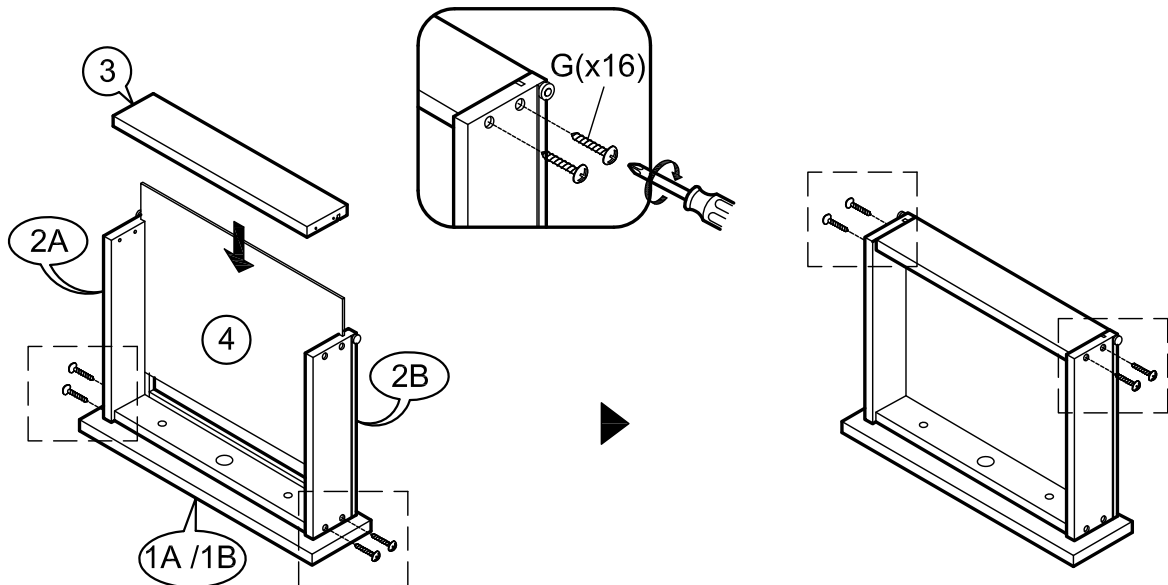
KITCHEN CART

7



- a) Place Door (5) on a material that does not scratch or damage its surface as shown.
- b) Affix Hinges (Q) to (5) by fitting "hinge cup" into the large drilled holes on (5) and fasten door hinges by using Screws (H).

8

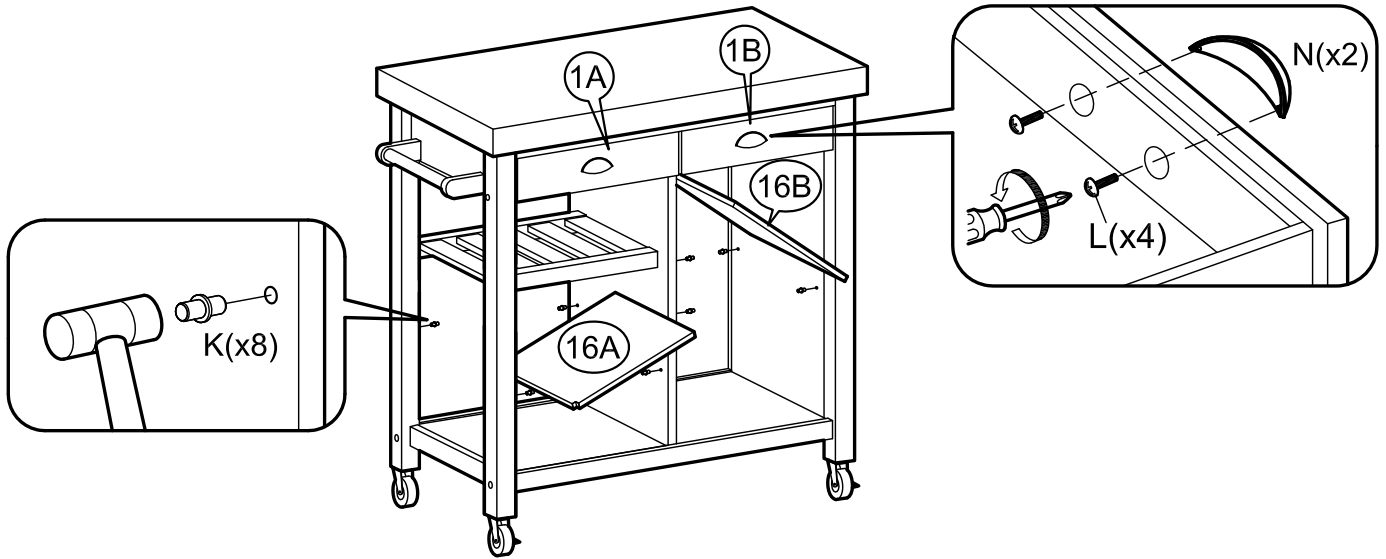


- a) Place Drawer Front Panel (1A) / (1B) on a material that does not scratch or damage its surface as shown.
- b) Fasten Drawer Side Panels (2A) & (2B) to (1A) / (1B) by using using Screws (G).
Use a Phillips Screwdriver to drive (G).
- c) Insert Drawer Bottom Panel (4) via grooves on (2A) & (2B) and (1A) / (1B).
- d) Fit Drawer Back Panel (3) between the Drawer Side Panels (2A) and (2B) and check that (4) also fits into the groove on (3). Use Screw (G) to fasten (3) to (2A) & (2B).

ASSEMBLY INSTRUCTIONS

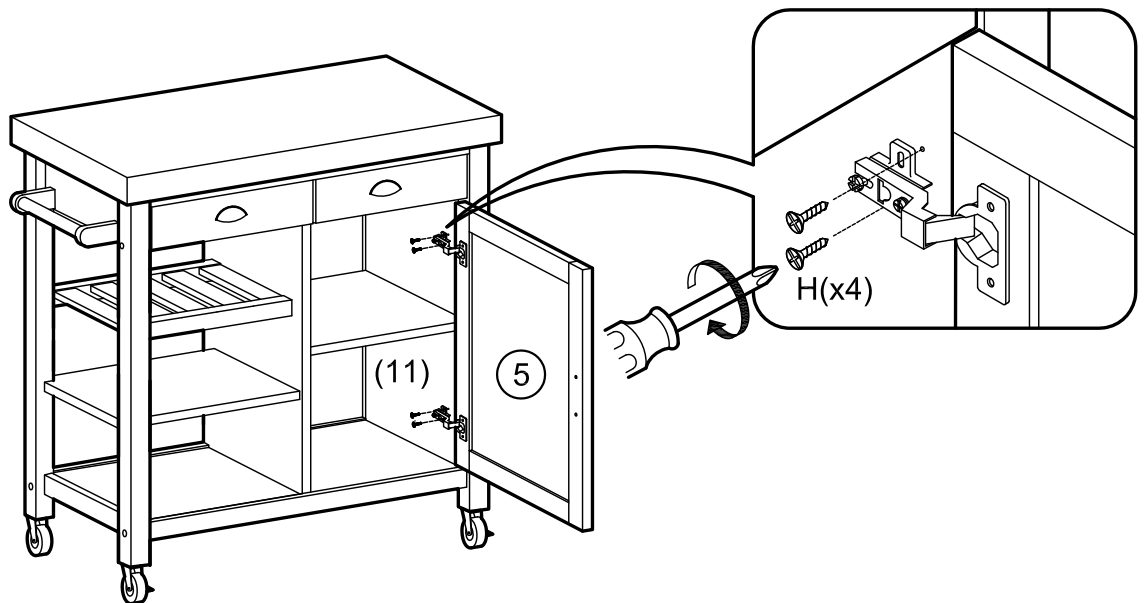
KITCHEN CART

9



- Place the kitchen cart assembly (from Step 6) upright.
- Use Screw (L) to affix Drawer Handle (N). Do not fasten (N) completely until both screws are in place.
- Insert drawers (1A) and (1B) by positioning rollers (on the drawer slide on each side of the drawer) above the rollers on Side and Middle Panels. Lift the Drawer Front slightly upward and slide the rollers on the drawer into the drawer slide on the panels, and then push in the drawer gently.
- Insert Shelf Pin (K) into the designated holes on Side & Center Panels. Use a mallet to tap lightly if necessary. Put Shelves (16A) and (16B) in place as shown.

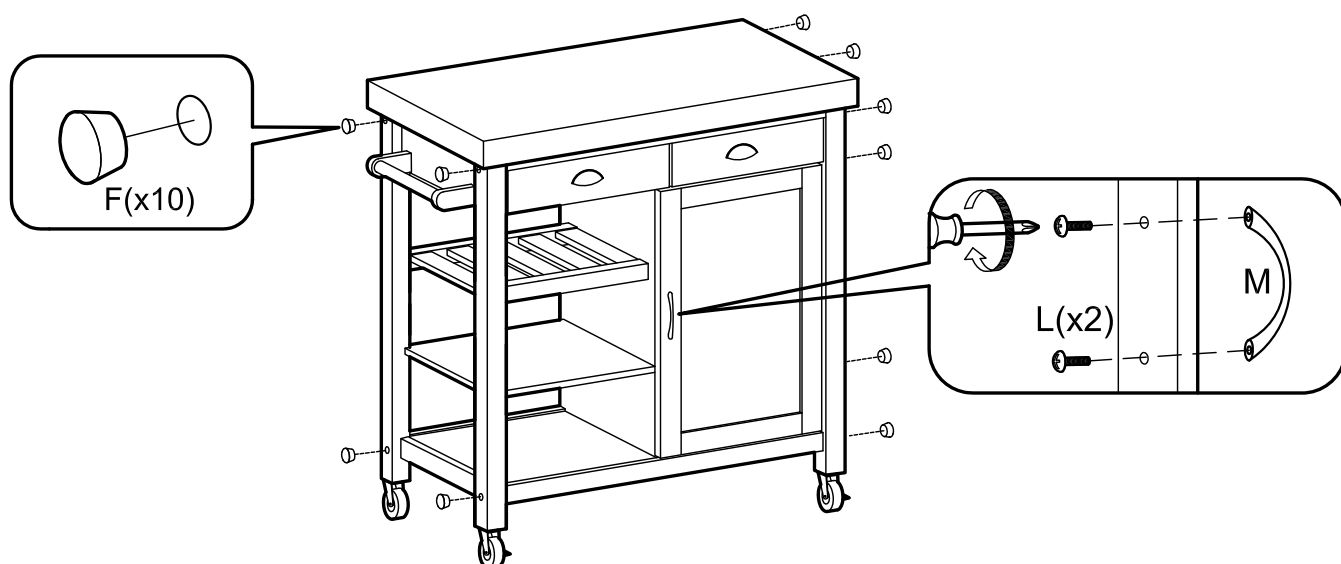
10



- Identify pilot holes on Right Panel (11) for hinge mounting plate. Use Screws (H) to fasten mounting plate to (11). Do not fasten (H) completely until all 4 screws are in place.

ASSEMBLY INSTRUCTIONS KITCHEN CART

11

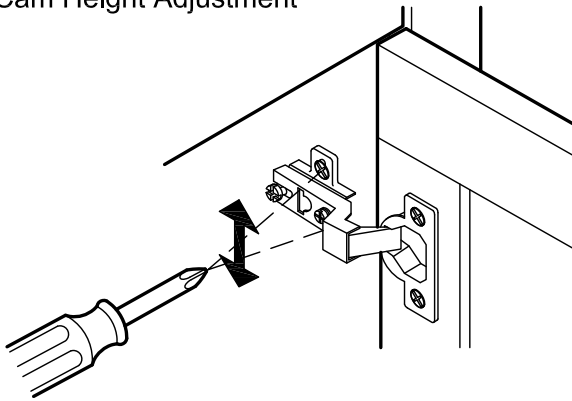


- a) Use Screw (L) to affix Door Handle (M). Do not fasten (L) completely until both screws are in place.
- b) Insert Plug (F) to conceal bolt holes on Side Panels.

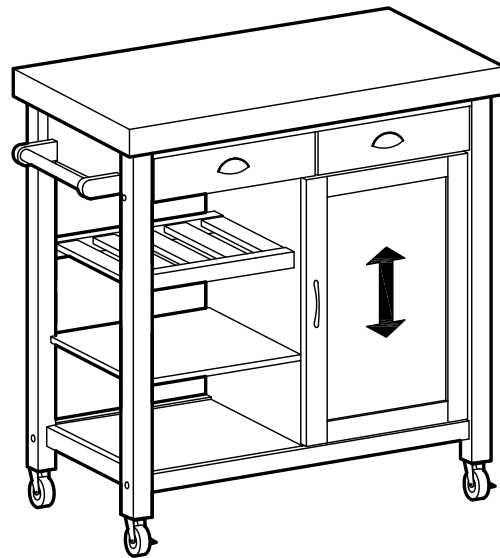
INSTRUCTIONS ON HINGE ADJUSTMENTS TO MAKE THE DOOR EVEN

12

Cam Height Adjustment

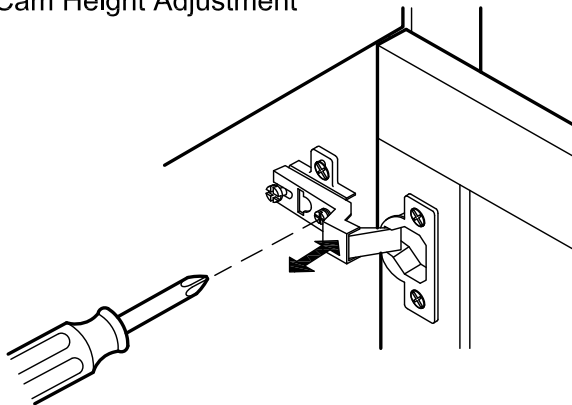


Loosen screws, adjust door and re-tighten screws

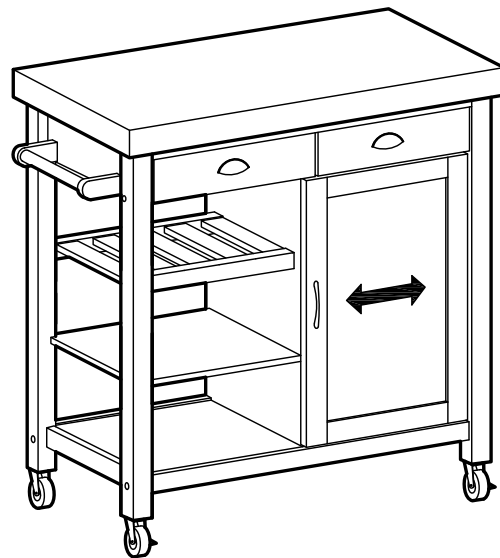


13

Cam Height Adjustment

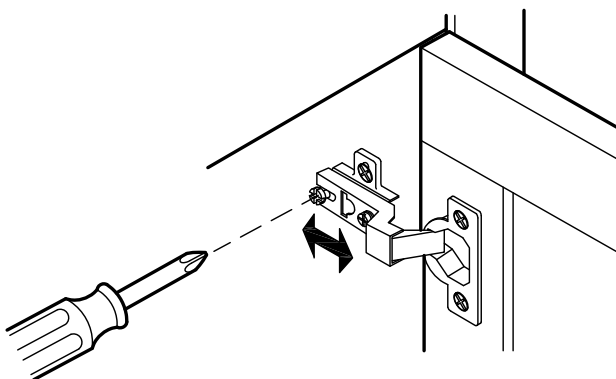


Turn front screw as shown to increase door overlay



14

Depth Adjustment



Turn rear screw as shown to adjust door position

