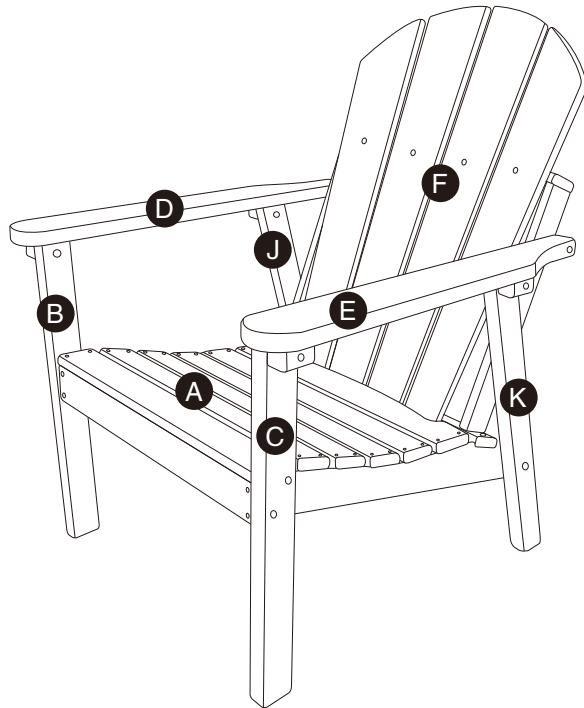


**IMPORTANT**  
**RETAIN FOR FUTURE REFERENCE**  
**PLEASE READ CAREFULLY**

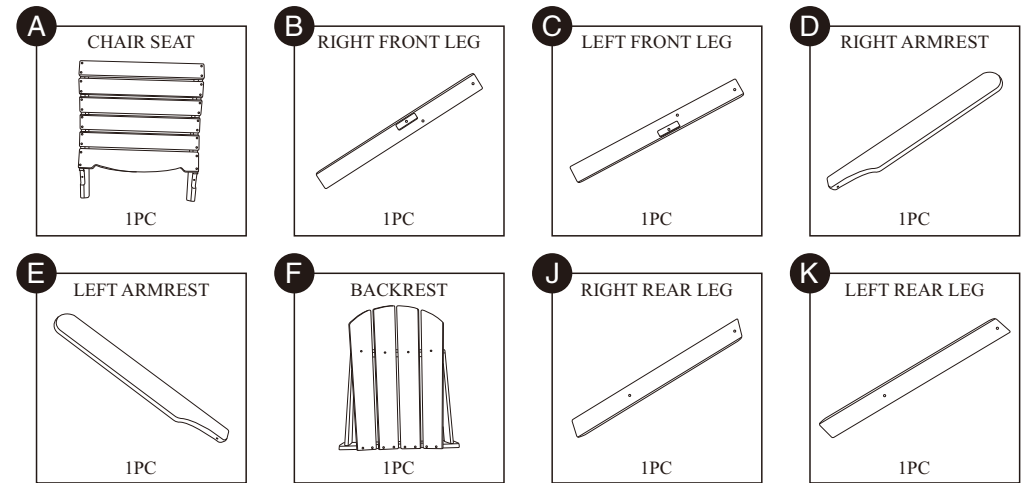
## **ASSEMBLY INSTRUCTIONS**



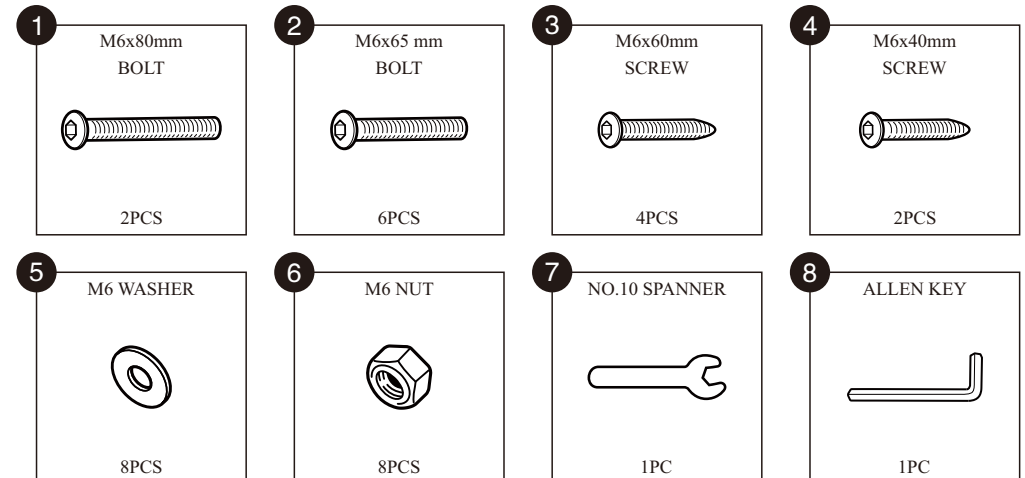
### **NOTE:**

1. Do not use an electric screwdriver.
2. Before starting the assembly, make sure all necessary parts are included in the box.
3. Secure all parts and bolts loosely. Only after the frame is complete should you fully tighten the screws.
4. If any instability occurs, loosen the screws, re-align the components as necessary, and retighten the screws evenly.
5. This item is not intended to be used as a climbing frame or toy.
6. Warning: Danger of suffocation. Keep out of reach of children.

## **Parts List**



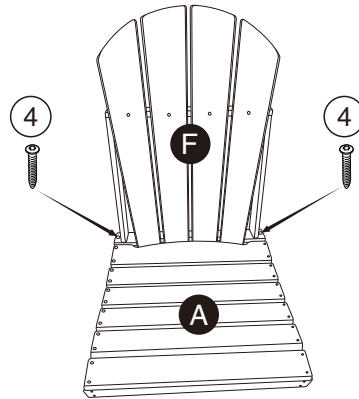
## **Hardware List**



# Assembly Instructions

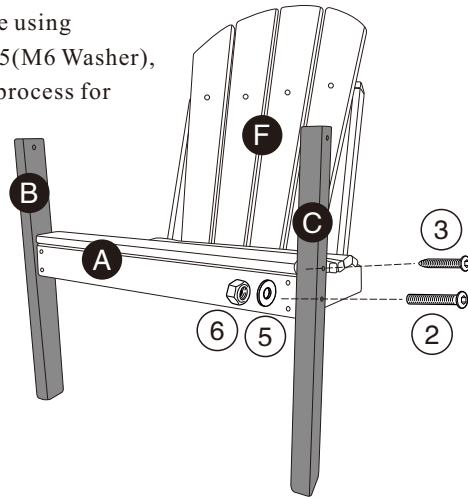
## Step 1:

Attach Part A (CHAIR SEAT) and Part F (BACKREST) with Hardware 4(M6\*40mm SCREW).



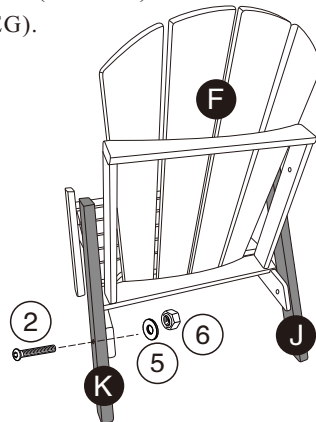
## Step 2:

Attach PART C(LEFT FRONT LEG) to the left side of Part A (CHAIR SEAT). Screw the upper hole with HARDWARE 3(M6\*60mm SCREW) and secure the bottom hole using HARDWARE 2(M6\*65 mm BOLT), HARDWARE 5(M6 Washer), and HARDWARE 6(M6 NUT) . Repeat the same process for PART B(RIGHT FRONT LEG).



## Step 3:

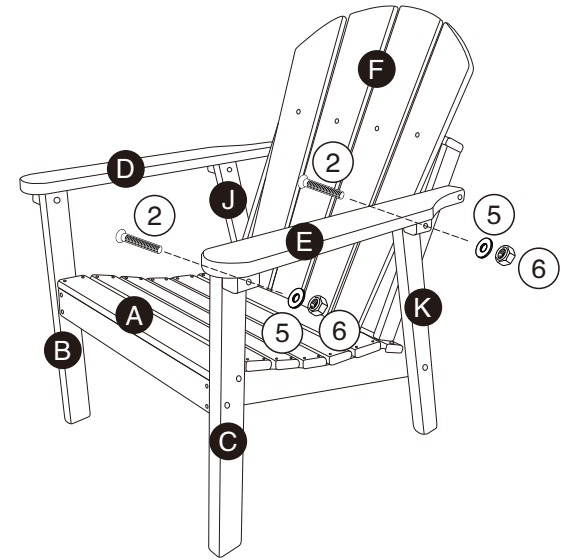
Secure PART K(LEFT REAR LEG) using HARWARE 2(M6\*65 mm BOLT), HARDWARE 5(M6 Washer), and HARDWARE 6(M6 NUT). Repeat the same process for PART J(RIGHT REAR LEG).



## Step 4:

Secure PART E(LEFT ARMREST) by attaching the two holes as showed in the picture using HARWARE 2(M6\*65 mm BOLT), HARDWARE 5(M6 Washer), and HARDWARE 6(M6 NUT).

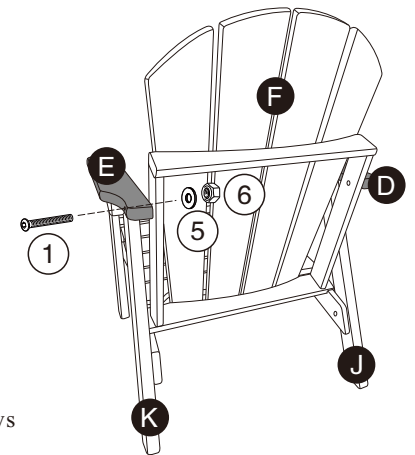
Repeat the same process for PART D(RIGHT ARMREST).



## Step 5:

Secure the hole at the end of PART E(LEFT ARMREST) to Part F (BACKREST) using HARWARE 1(M6\*80 mm BOLT), HARDWARE 5(M6 Washer), and HARDWARE 6(M6 NUT).

Repeat the same process for PART D(RIGHT ARMREST).



Congratulations! Assembly of your Adirondack Chair is complete. Kindly reminder that all screws should be fully tighten for safer use.