

PACKING LIST



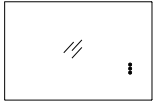
Hanging Bracket



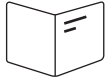
Anchor & Screws



EVA Gasket x4



Led Lighted Mirror



Instruction Manua



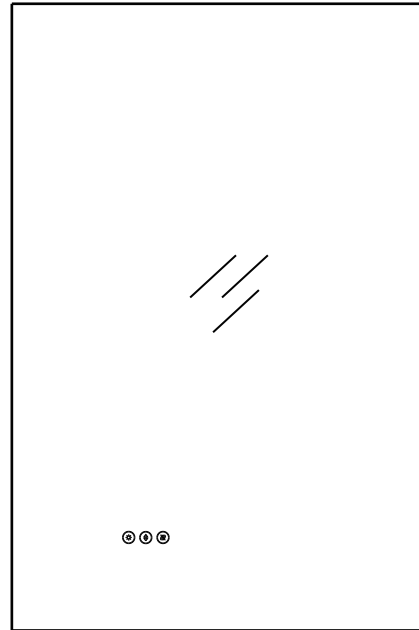
SAFETY INSTRUCTIONS

- ① Please read the instructions carefully before using.
- ① Do not disassemble or refit the products.
- ① Press touch sensor button properly.
- ① Handle with care during installation or moving.
- ① Keep the mirror dry moisture reduces the sensitivity of the product.
- ① Turn off the power before cleaning. The surface of the mirror should be cleaned with glass cleaner , please make sure the mirror is completely dry before using.
- ① Turn off the power and avoid direct sunlight if not used or stored for a long time , keep it away from children.
- ① Do not approach or put the product into the fire in case of fire or explosion.
- ① Stop using it immediately if abnormal condition occurs.

MADE IN CHINA

WALL-MOUNTED LED BATHROOM MIRROR

OPERATIONS MANUAL



The 60x36 function keys are horizontally centered

VANITY MIRROR

ASSEMBLY & INSTALLATION INSTRUCTIONS

Dear Customer

Thank you for choosing us! We appreciate your business.

Should you have any questions or encounter any issues, please don't hesitate to contact us. You can reach us via email at support@4modernhome.com or by calling 469-3126428. Our team is dedicated to ensuring your complete satisfaction with your purchase. We value your feedback, as it helps future customers in making informed decisions. We encourage you to share your experience by leaving a brief product review on the platform where you made the purchase. Once again, thank you for choosing us!

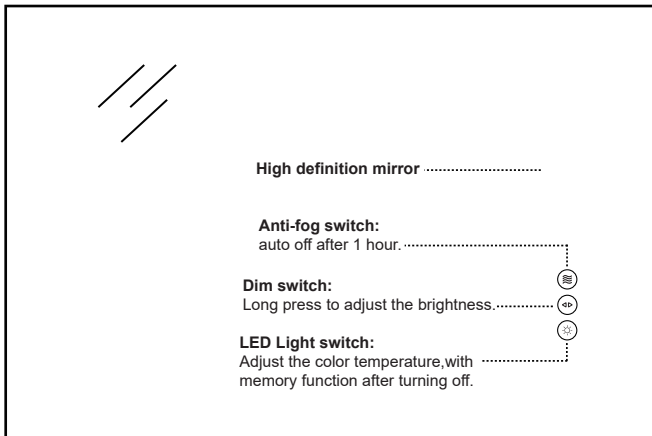
Best regards!

[Support Team]

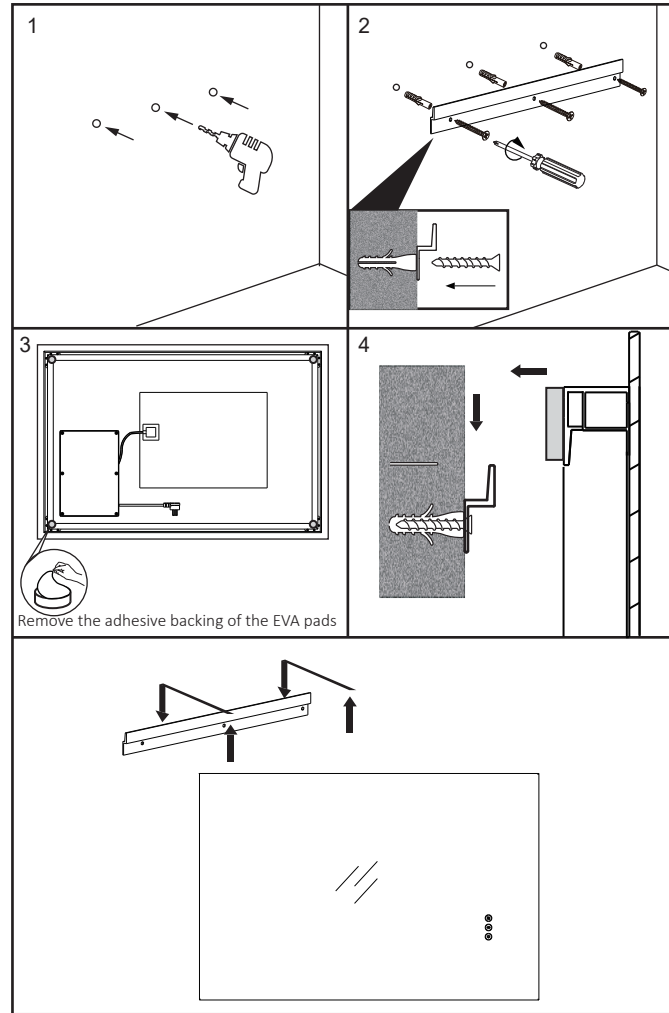
Warning: If any special control devices are used with this fixture, follow the instructions carefully to assure full compliance with N.E.C.requirements.If there are any questions, contact a qualified electrical contractor.

Caution: It is highly recommended to get an electrician to install this light.Please make sure to turn the electricity off at the main circuit breaker before beginning installation. All glass is fragile. Use care when handling glass component (s) and/or lamp(s).

ILLUSTRATION



INSTALLATION METHOD



- ① Measure the distance of the aluminum strip behind the mirror with a tape measure.
- ② Mark at the determined installation positions and draw an auxiliary line with a pencil.
- ③ Drill holes at installation positions with an electric drill.
- ④ Hammer the expanded plastic material into the holes.
- ⑤ Take out the metal hanging piece and use a screwdriver to fix the hanging pieces on the wall with screws.
- ⑥ remove the adhesive backing from the EVA gaskets and attach them to the corners.
- ⑦ Point the aluminum strip at the metal pieces and hang the mirror on the wall.

OPERATING INSTRUCTIONS

- Please use standard plug to connect the power directly.
- Touch once to turn on the lighting and touch three times to turn it off. Touch to cycle through the light temperatures: Cold White, Natural White, Warm Yellow
- Long Hold to dim or brighten the light. (Factory setting: the brightness has been adjusted to 100%; if you think it is too dazzling, you can long press it again to reduce the brightness to your preference)
- Press switch to turn on/off the anti-fog.
The button lights white when the demister is on.
- Unplug when it is no used.

SPECIFICATIONS

[Product Name] LED bathroom mirror

[Material] Aluminum frame +Glass

[LED Color Temperature] 3000-4200-6500K

[Power Supply] Powered driver AC,120V

Dimension	Output Around	LM	Defog Size (mm)	No. of Hanging Bracket	No. of Anchor+ Screws Set
20"x28"	24W	2050	250*250	1	3
24"x32"	36W	2700	300*400	1	4
24"x36"	36W	2800	300*400	1	4
30"x30"	36W	2800	300*400	1	4
36"x28"	36W	2900	300*400	1	4
36"x36"	36W	3100	350*500	1	4
40"x32"	36W	3100	350*500	1	4
48"x36"	48W	3200	350*500	2	8
60"x36"	48W	4200	350*800	2	8

SPECIAL FEATURE

- 3/16 inch Thickness high definition eco-friendly glass mirror
- With switching and free to switch between warm, natural and cool light
- With dimming function
- With anti-fog function
- Built-in power plug