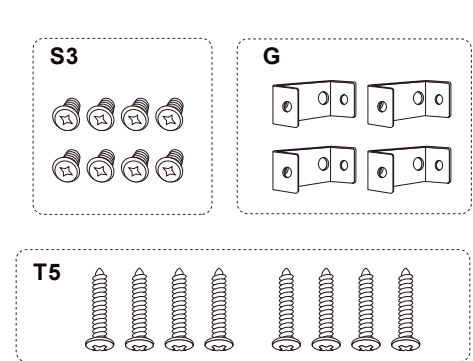
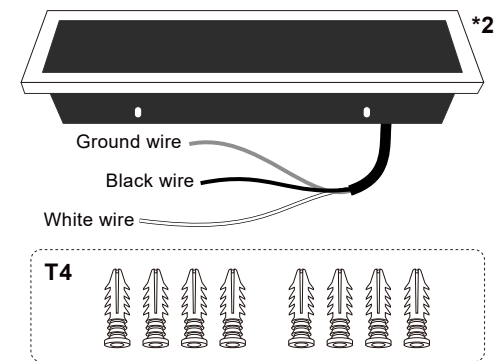
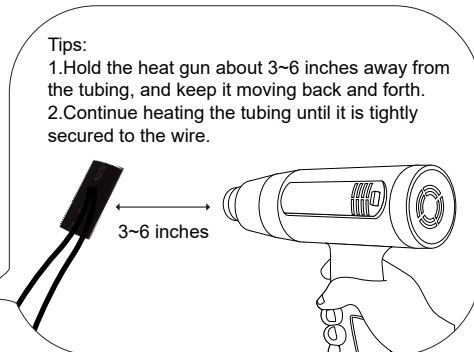
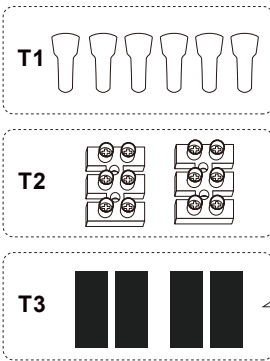


# Instructions

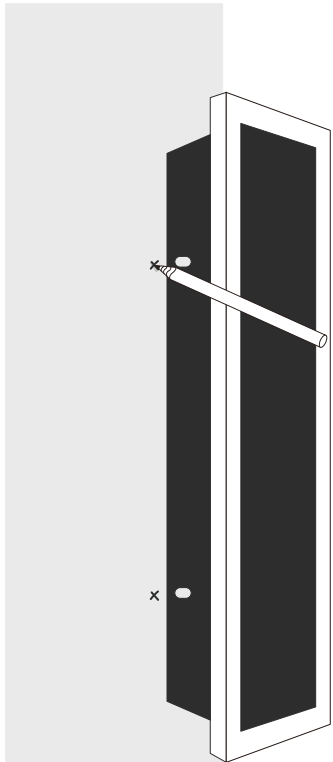
## NOTE :

1. Please Check whether the accessories are missing in time after unpacking. ( Bulbs not included )
2. We offer 12 months guarantee. If you find any damaged or missing parts in transit, please feel free to contact us by email , we will solve it ASAP!



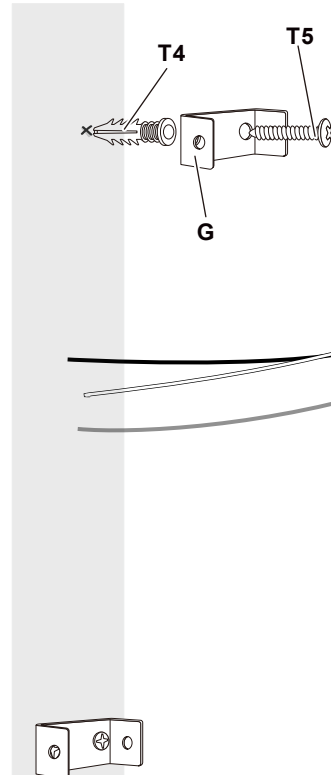
### 01

Please confirm the location of wires in your space and mark the points for mounting bracket.



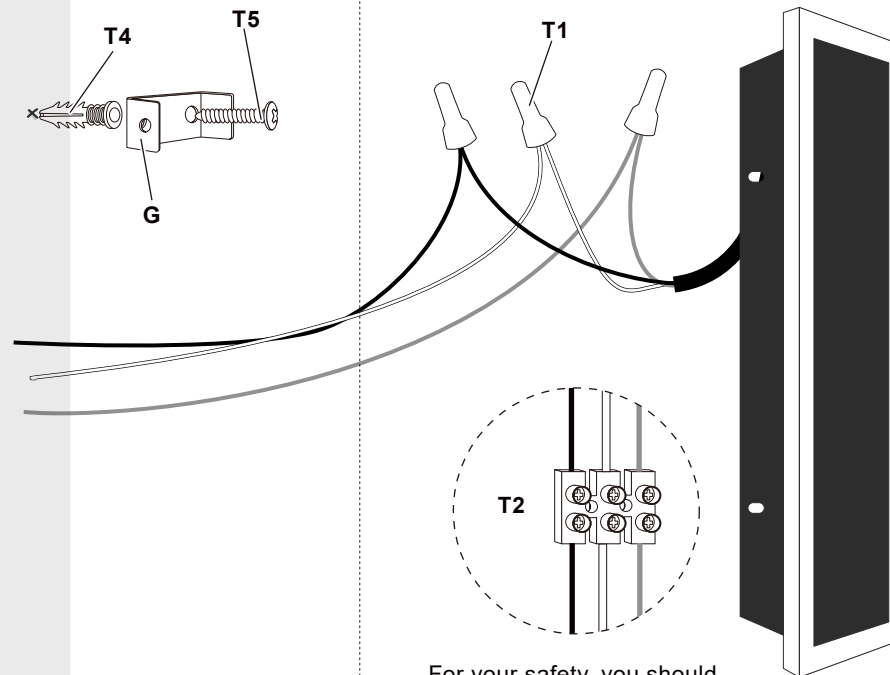
### 02

Use T4 & T5 to fix the mounting brackets on the wall. (Please note the direction of the brackets.)



### 03

Fixture wires should be connected to wires by color. black wire to be attached to the black wire, white to white and green wire to ground wire.



For your safety, you should use wire connector T1, T2 or T3 as you like. If you choose connector T1 you need to use electric tape for it.

### 04

Align the holes on the light with the screw holes on the bracket , use S3 to fix the fixture.

