



**SANDUR Bar Stool**

W 18 1/16" D 19 3/8" H 35 3/4"  
 SH 28 3/8" CH 3/4" OSH 29 1/8"  
 16.5 lbs

Powder coated stainless steel & rope  
 or stainless steel & rope

**SANDUR ROPE AND FRAME COMBINATION**



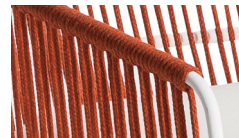
White Rope / White Frame



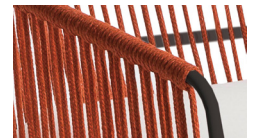
Clay Rope / White Frame



Clay Rope / Stainless Steel Frame



Terra Cotta Rope / White Frame



Terra Cotta Rope / Anthracite Frame



Taupe Rope / Stainless Steel Frame



Taupe Rope / Anthracite Frame

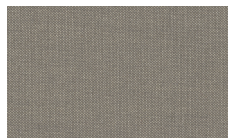


Anthracite Rope / Anthracite Frame

**SANDUR: CUSHION FABRICS**



Canvas Natural



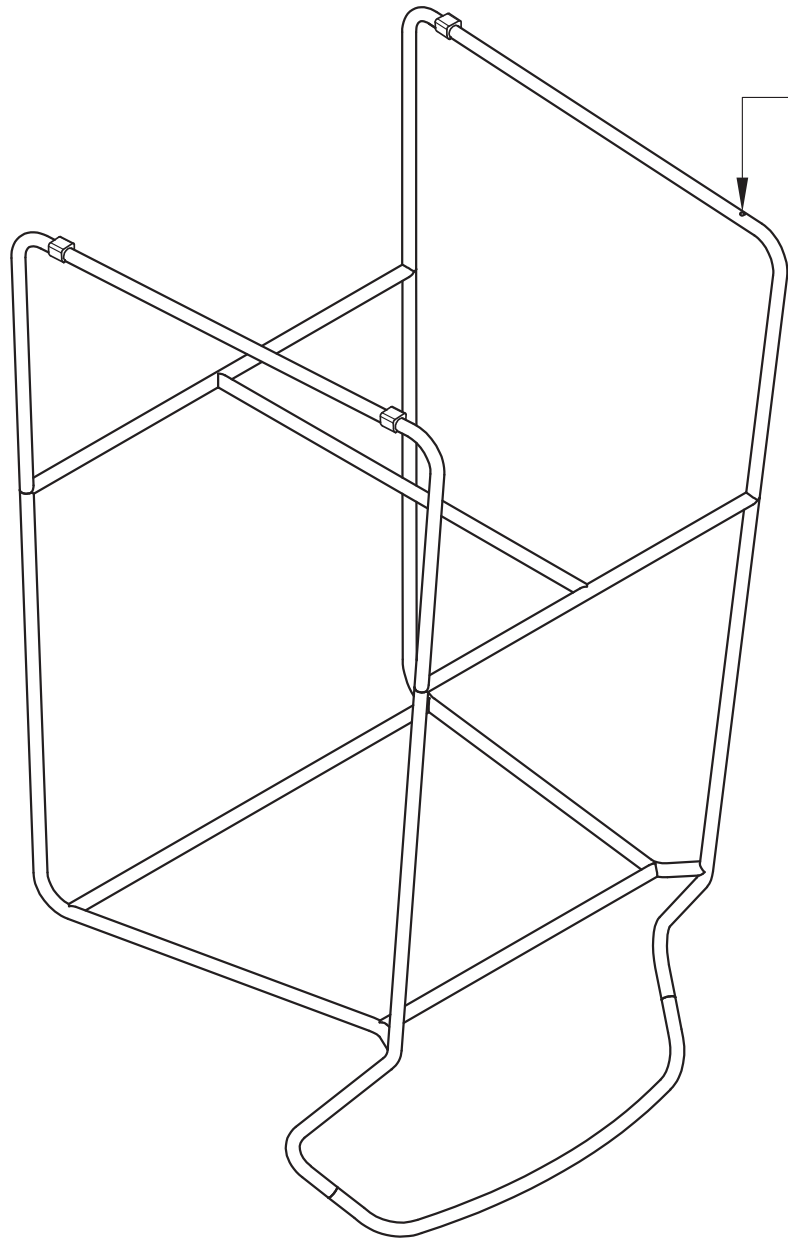
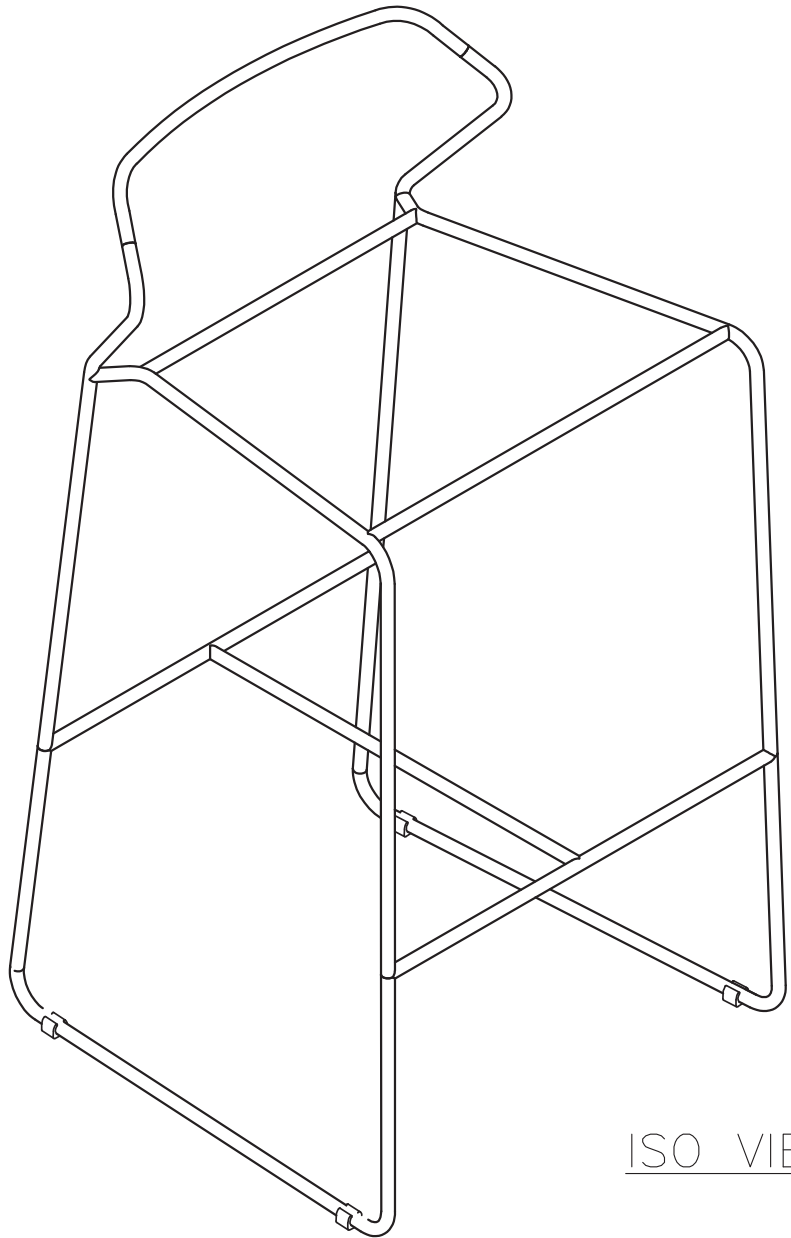
Lantern Slate



Cayenne



Canvas Brick



ISO VIEW

ISO

**OASIQ**

DWG.NO: FAE0A4-5

TITLE : ISO VIEW

DIM EXT: 487.6x492.8x910.2 MM.

MATERIAL: SS304

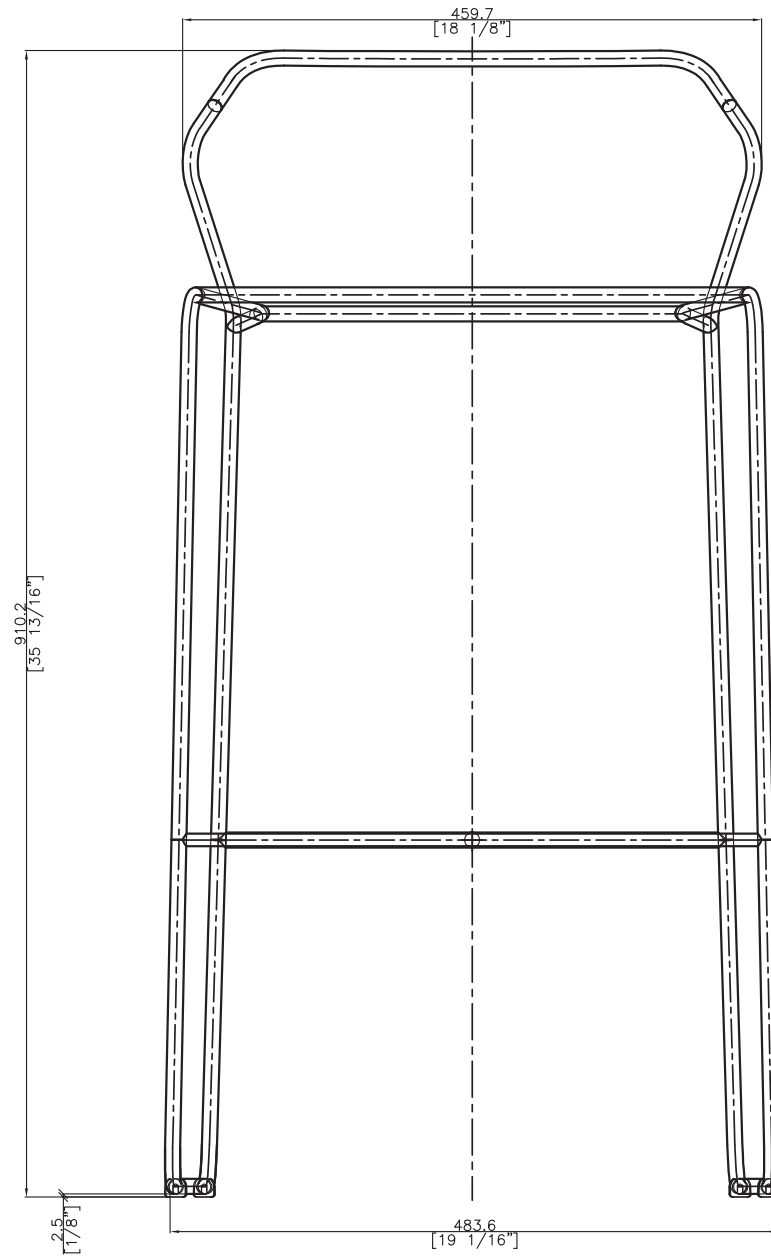
DRAWN BY : Mr.Khanti

FINISH DATE : 20-12-14  
BEGIN DATE : 29-11-13

KHAN  
ALGIN

SCALE : 1:2  
⊕

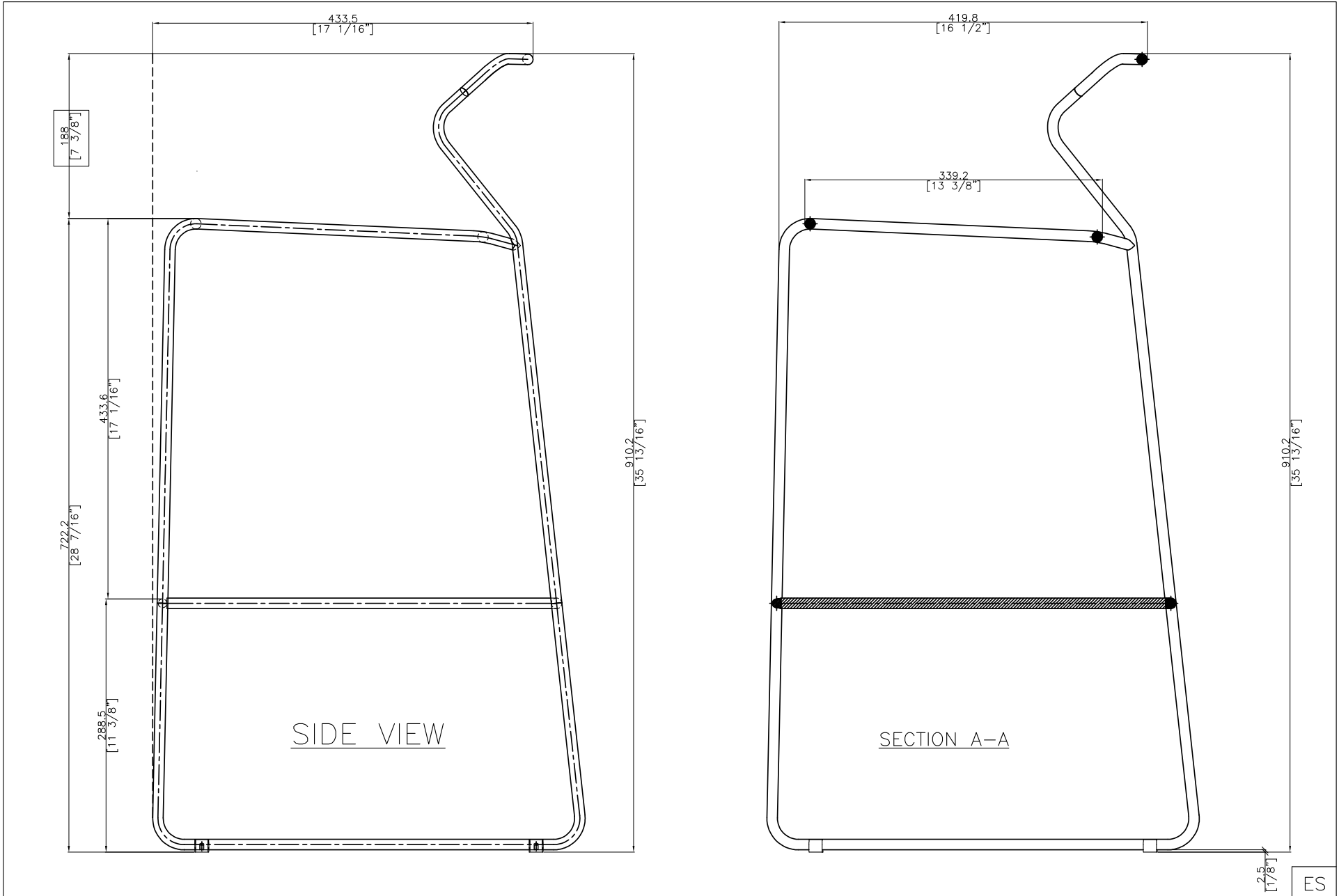
P. 2

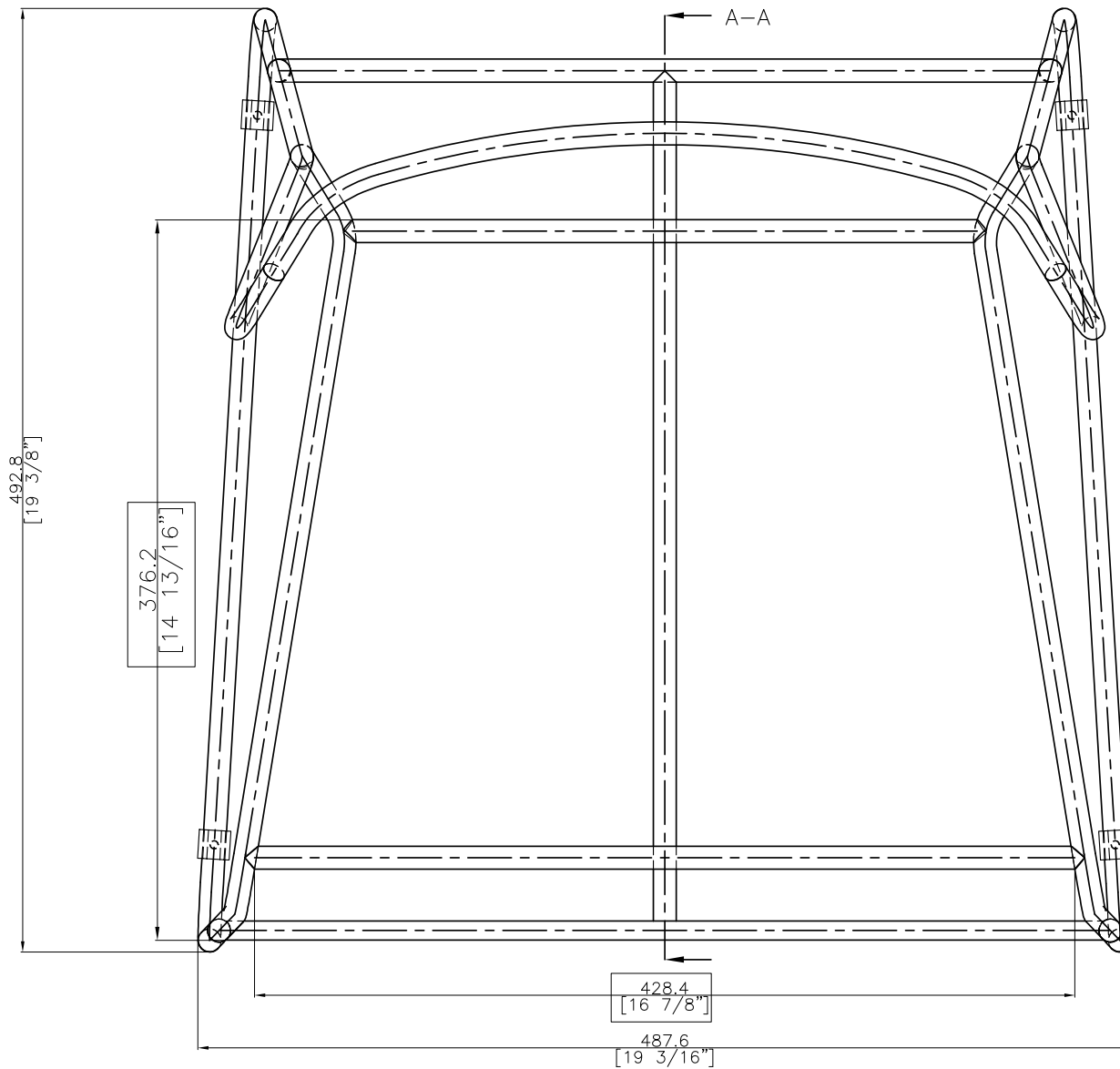


FRONT VIEW

EF

<b>OASIQ</b>	DWG.NO: FAE0A4-5	TITLE : FRONT VIEW	DIM EXT: 487.6x492.8x910.2 MM.	MATERIAL: SS304	DRAWN BY : Mr.Khanti	FINISH DATE : 18-06-15	KHAN	SCALE : 1:1	P. 4
						BEGIN DATE : 29-11-13	ALGIN		





TOP VIEW

ET

**OASIQ**

DWG.NO: FAEOA4-5

TITLE : TOP VIEW

DIM EXT: 487.6x492.8x910.2 MM.

MATERIAL: SS304

DRAWN BY : Mr.Khanti

FINISH DATE : 20-12-14  
 BEGIN DATE : 29-11-13

KHAN  
 ALGIN

SCALE : 1:1  


P. 3