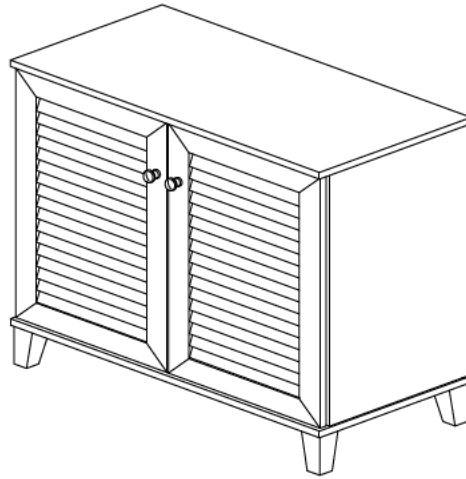
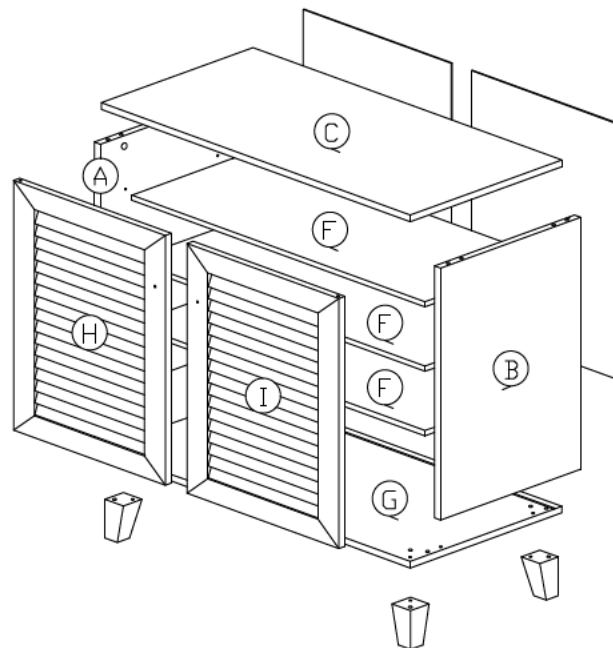


Assembly Instruction



Part List



Hardware List

No.	SHAPE	DESCRIPTION	Qty.
1		8x25mm Wood Dowel	12Pcs
2		15MM Titus Mini Fix	4Sets
3		M3x16mm Screw	4Pcs
4		M4x38mm Screw	4Pcs
5		M7x40mm Screw	4Pcs
6		Shelf Support	14Pcs
7		M6x22 Steel Bracket	4Pcs
8		Brown Magnet 2 Pin Flat Head Tapping Screw M6x10mm ZB	2Sets
9		Handle (1) M4x25mm (Handle Screw)	2Sets

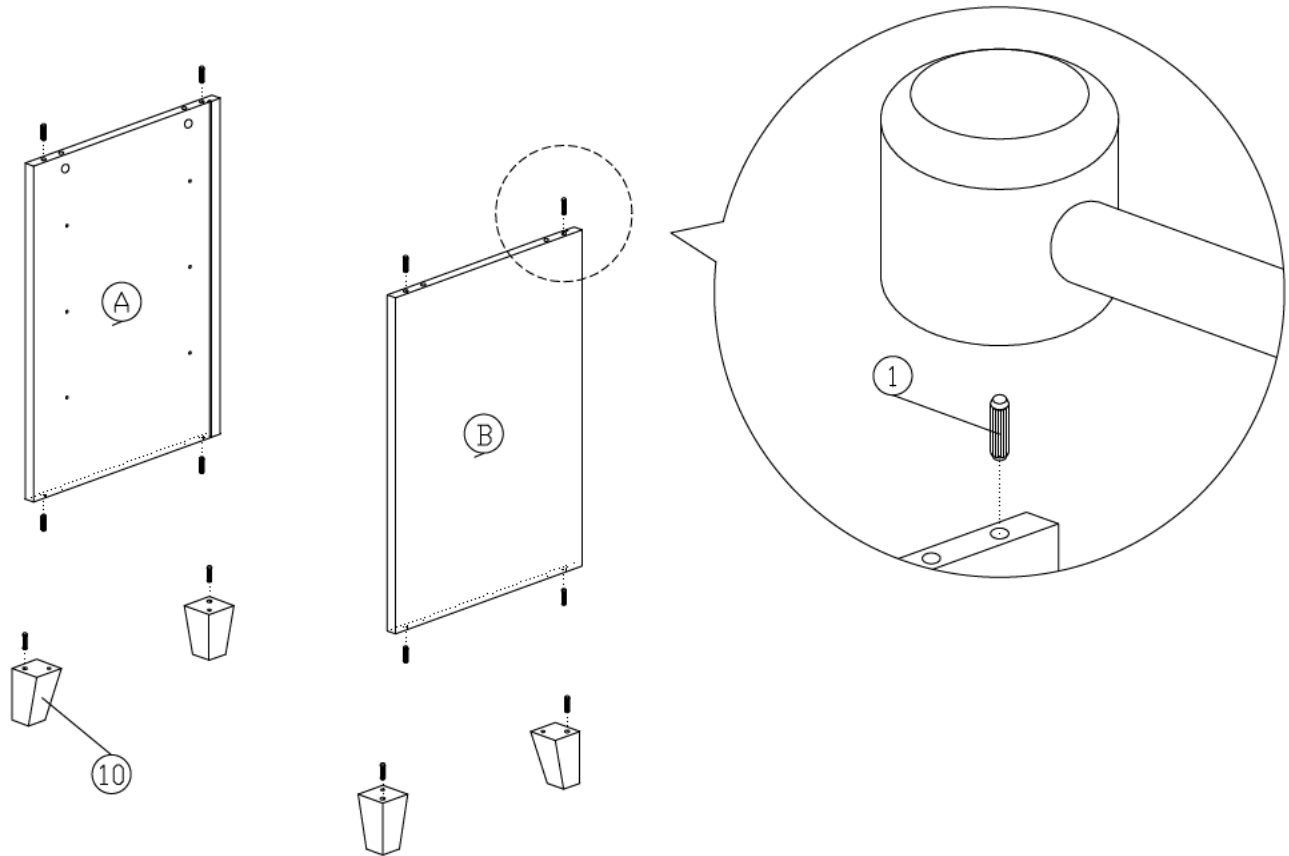
10		Wooden Leg	4Pcs
11		L Key	1Pc
12		Z Bracket	2Pcs

Packing Tipping Restraint

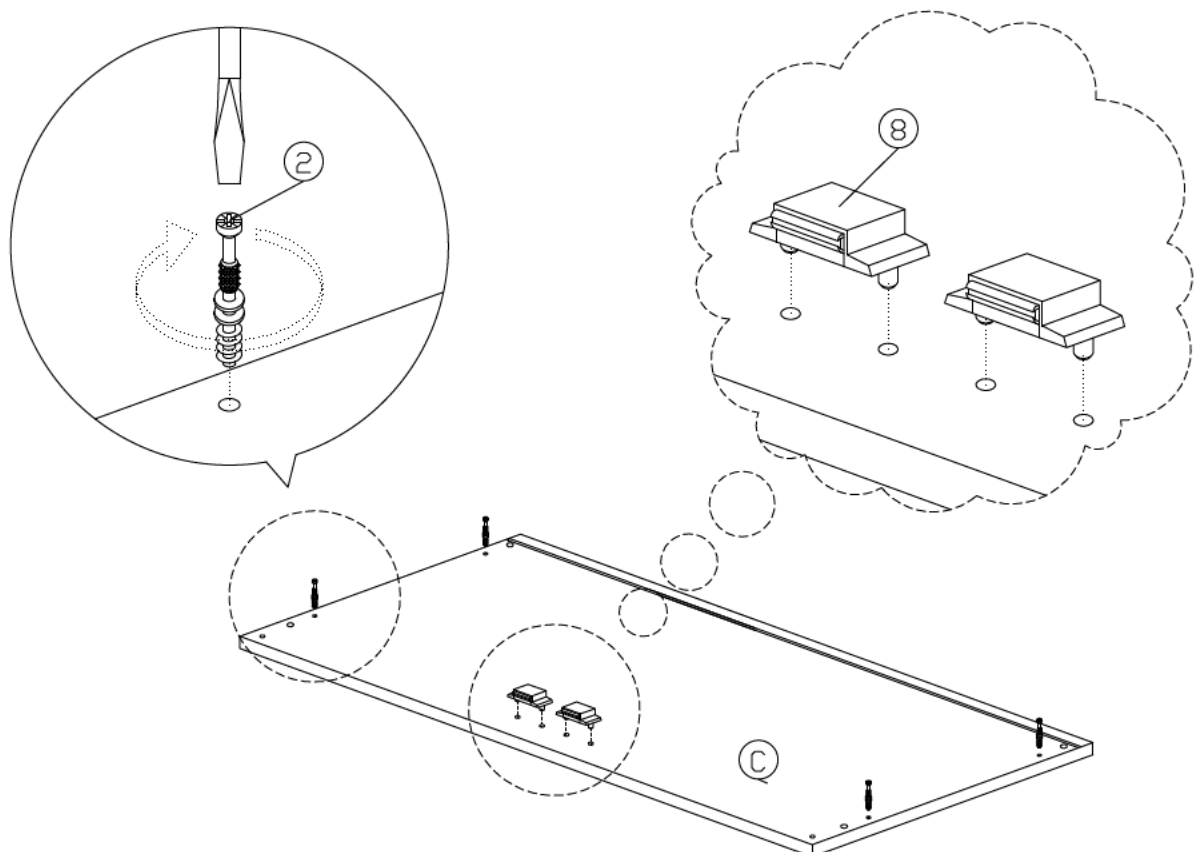
13		M3.5x15mm Screw	2Pcs
14		Wall Plug	2Pcs
15		M4x30mm Screw	2Pcs
16		Safety Strap	2Pcs
17		Flat Washer 6x19x2mm	4Pcs

Assembly Instruction

Step 1

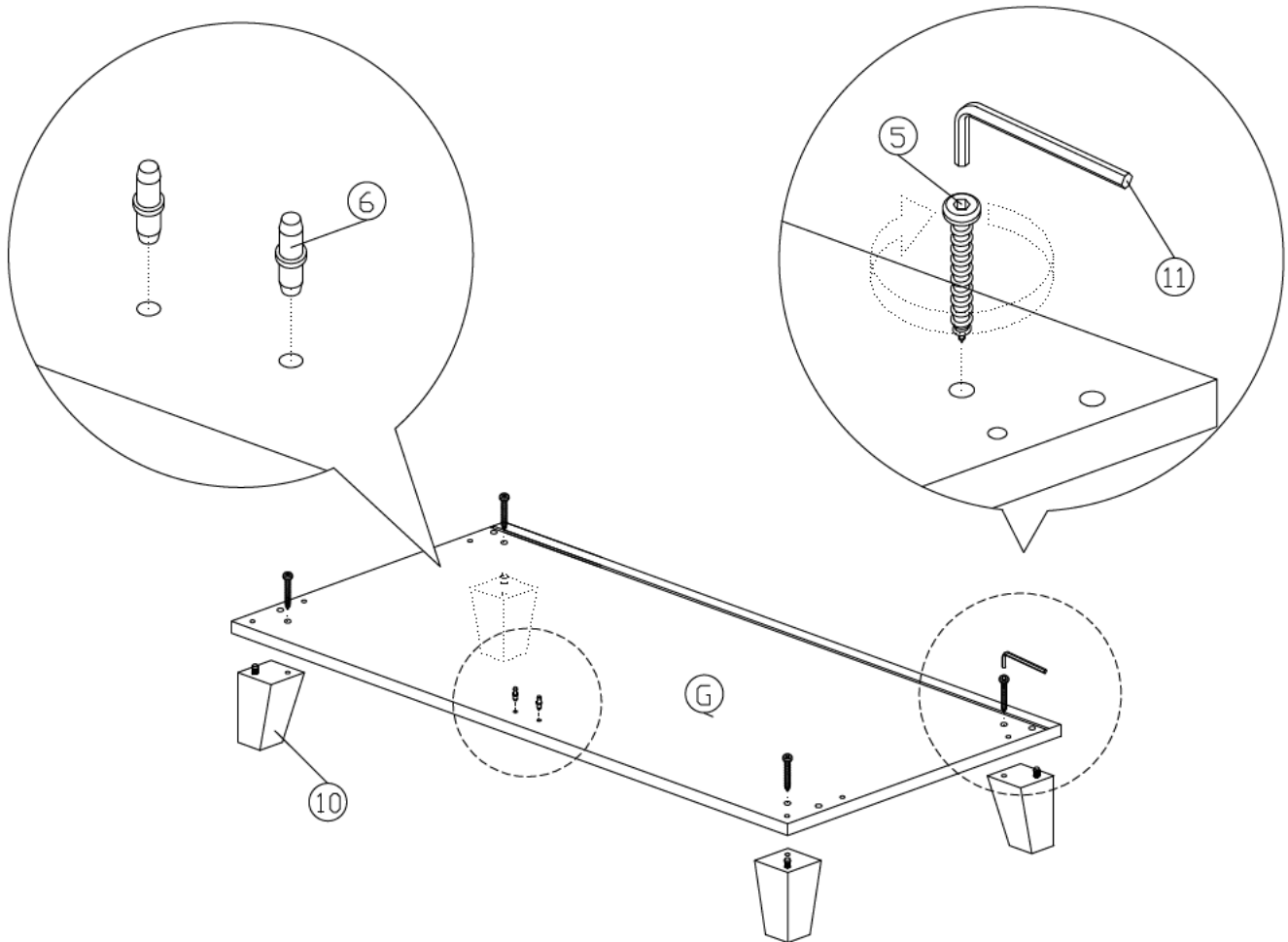


Step 2

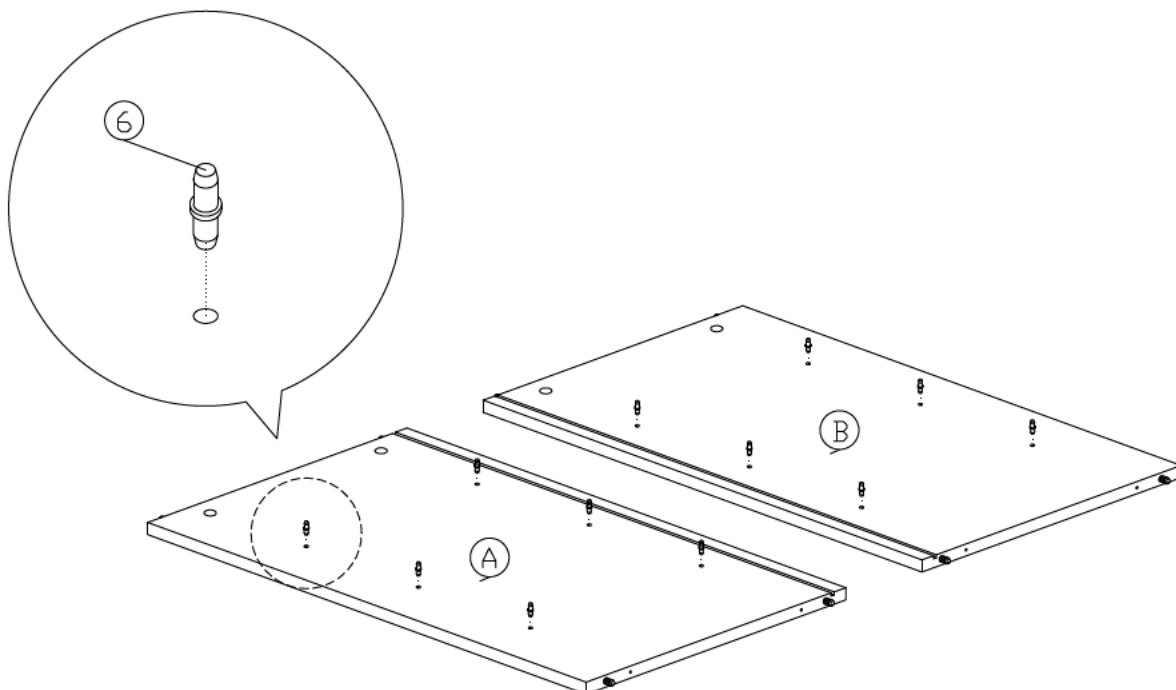


Assembly Instruction

Step 3

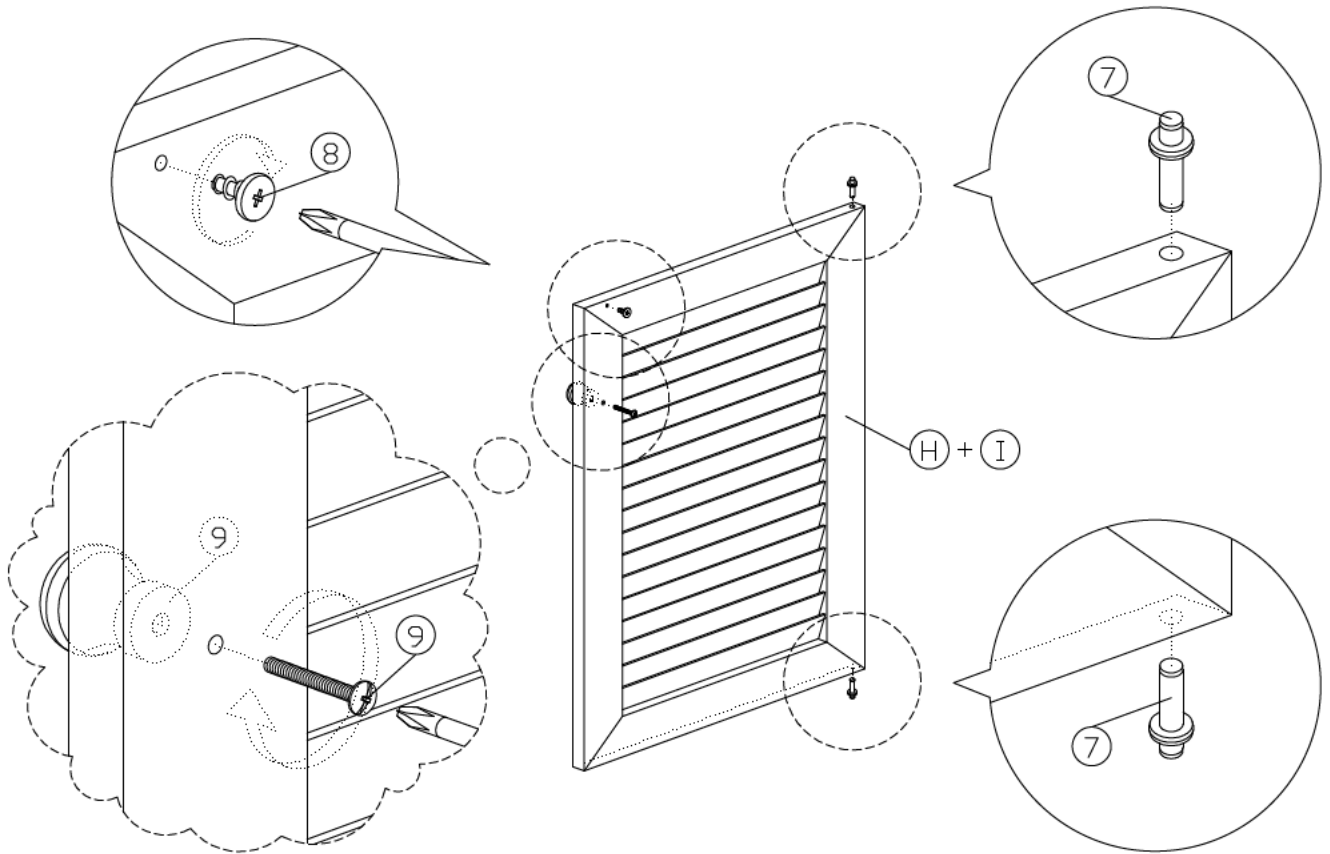


Step 4

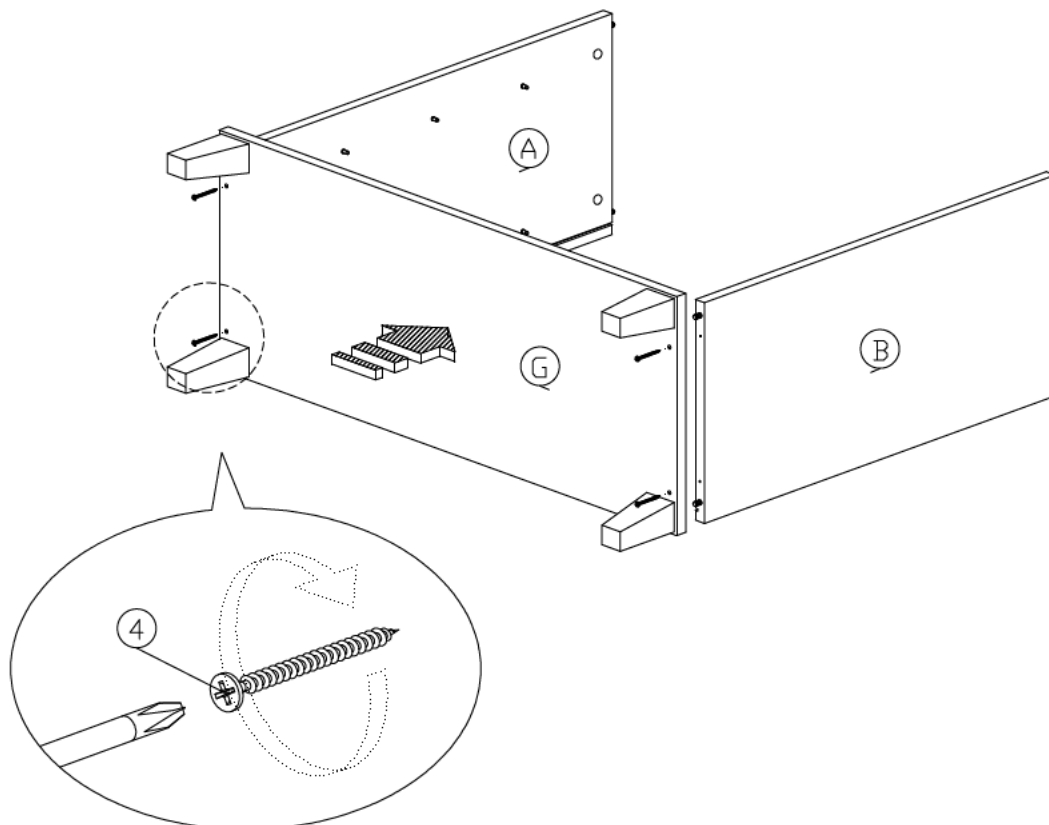


Assembly Instruction

Step 5

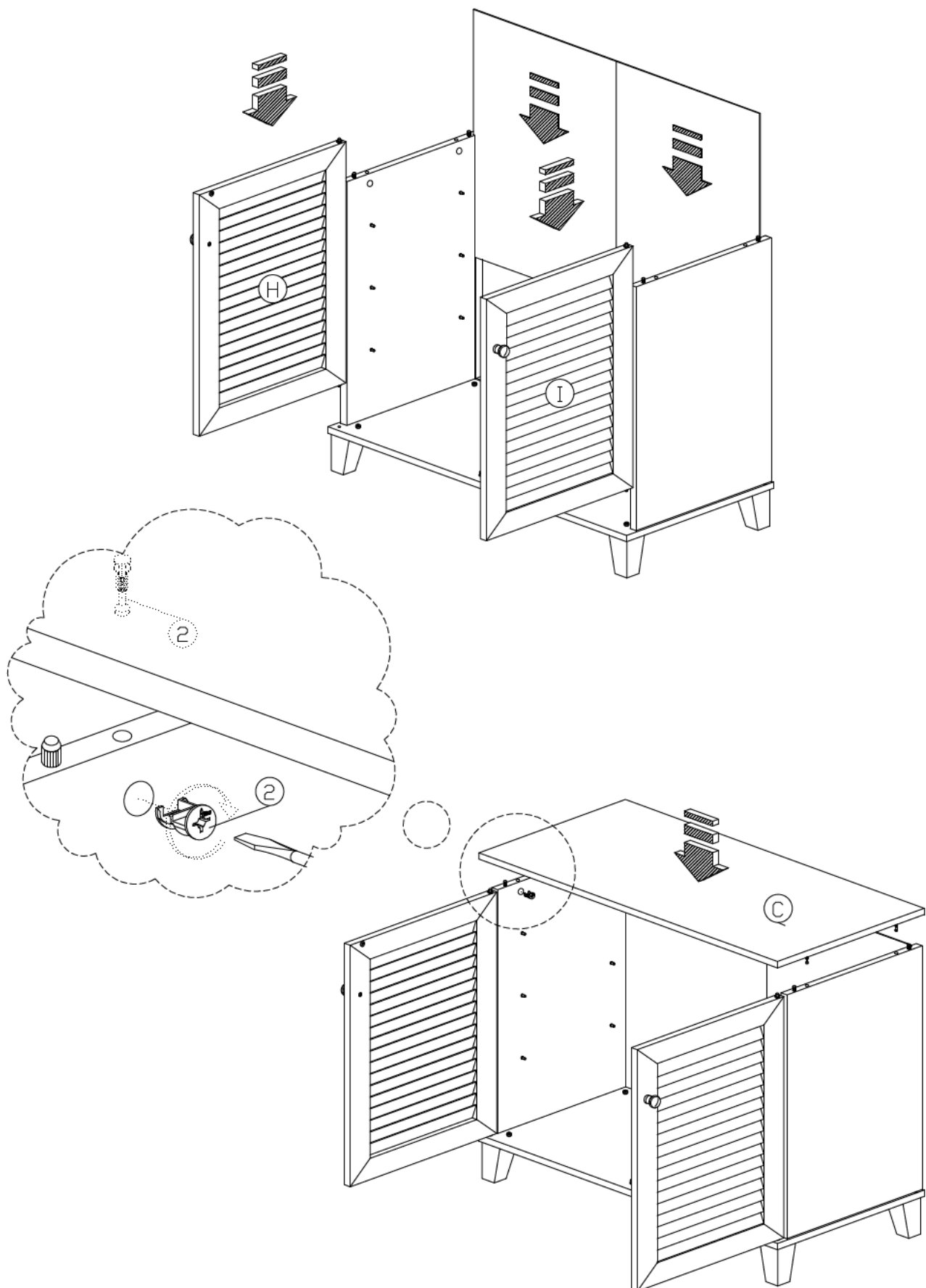


Step 6



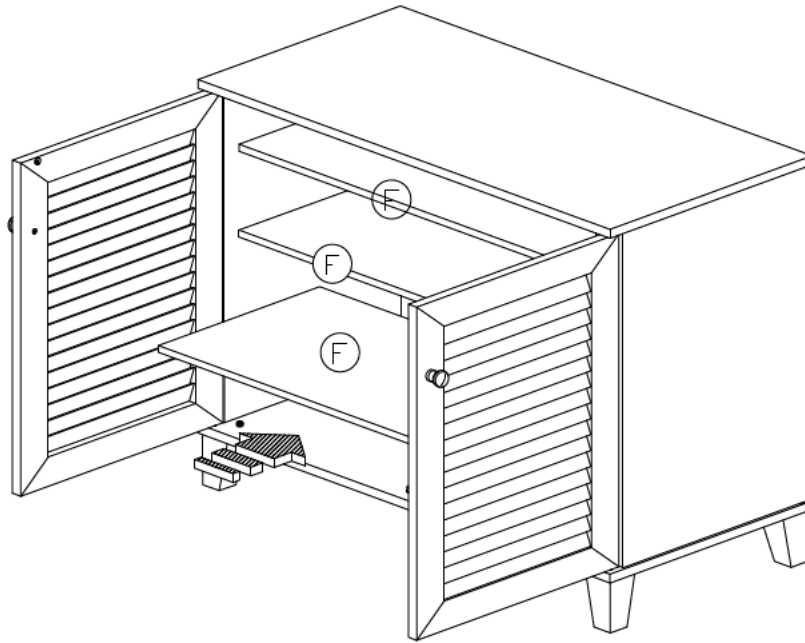
Assembly Instruction

Step 7

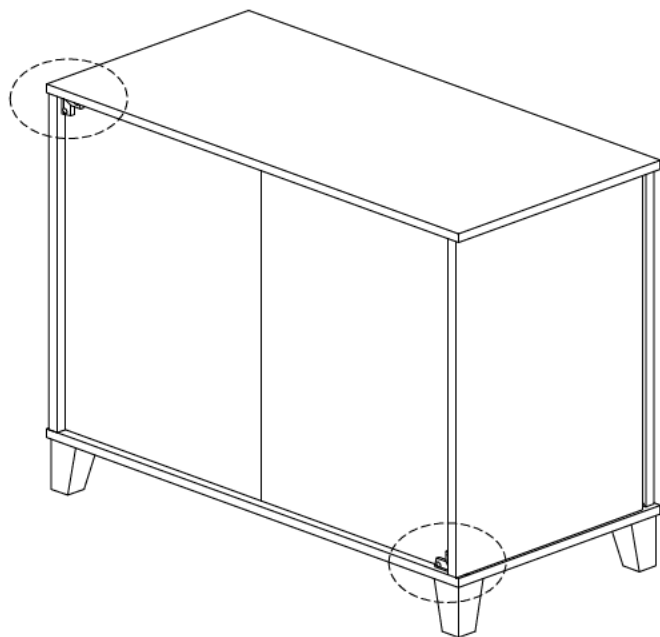
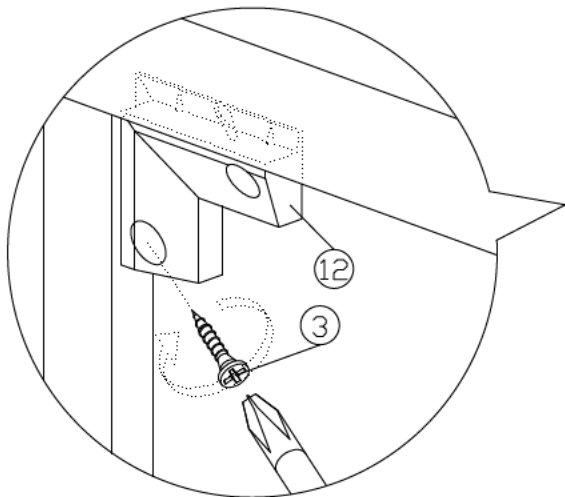


Assembly Instruction

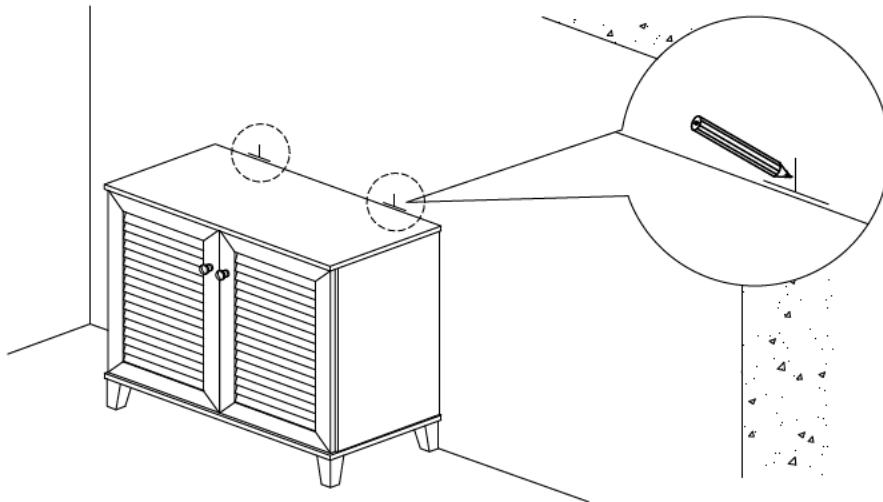
Step 8



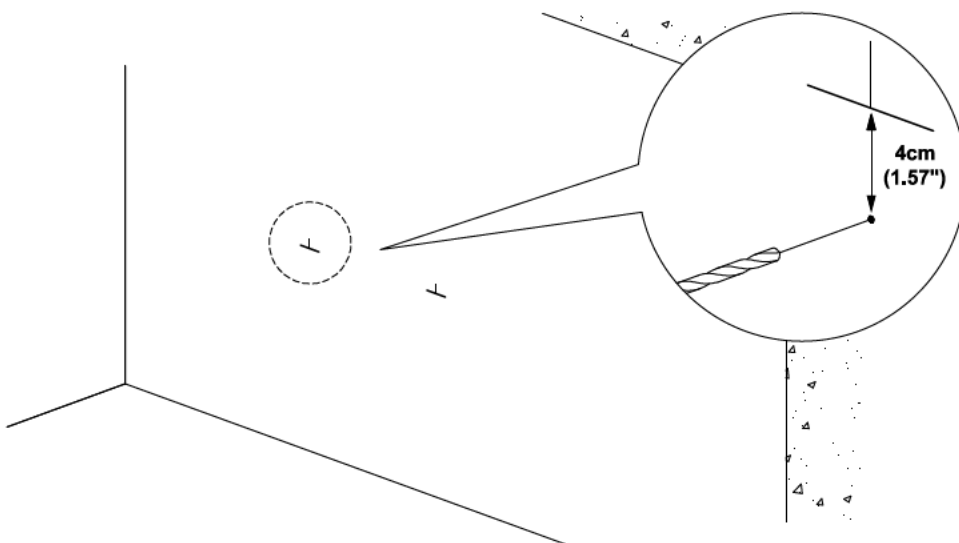
Step 9



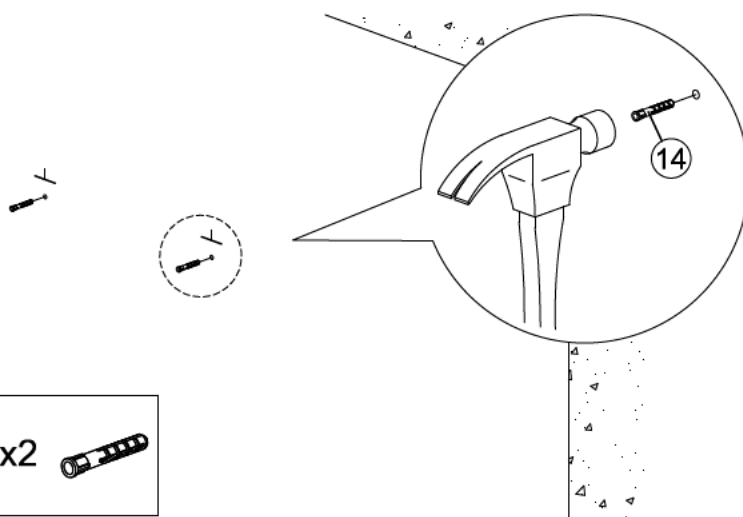
TIPPING RESTRAINT



1. First mark the wall with pencil as in diagram.



2. Drill small hole at the pencil mark.

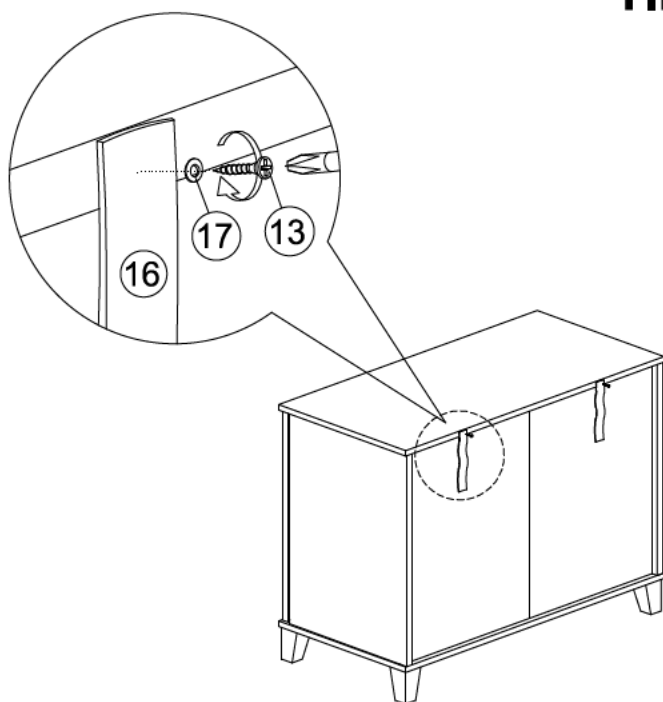


3. Insert plastic wall plug (14).

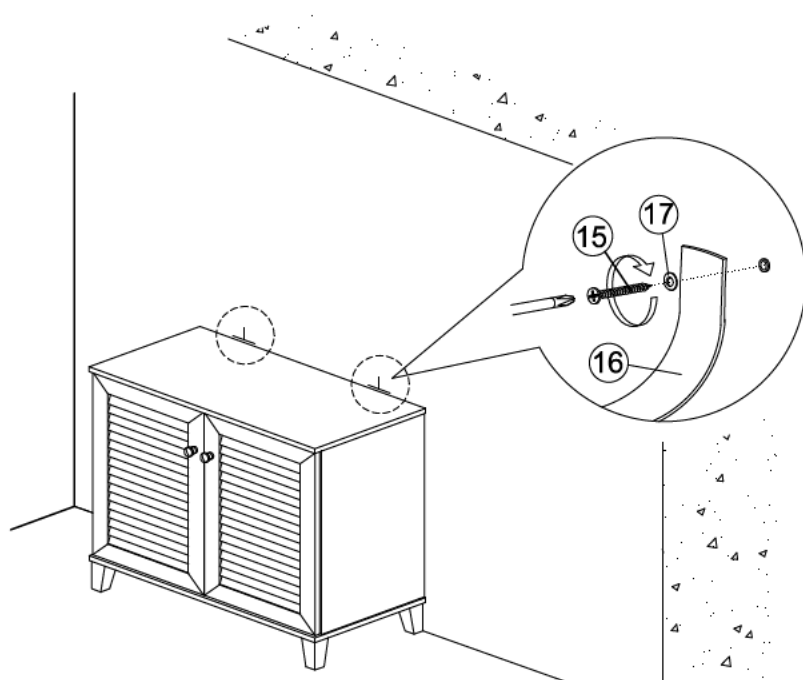
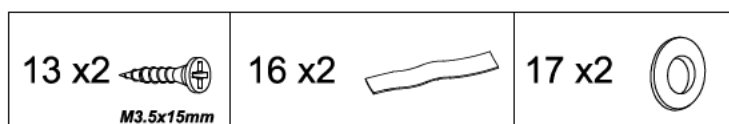
14 x2



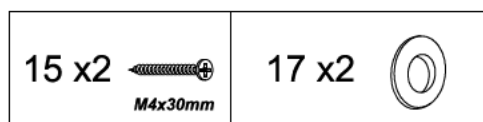
TIPPING RESTRAINT

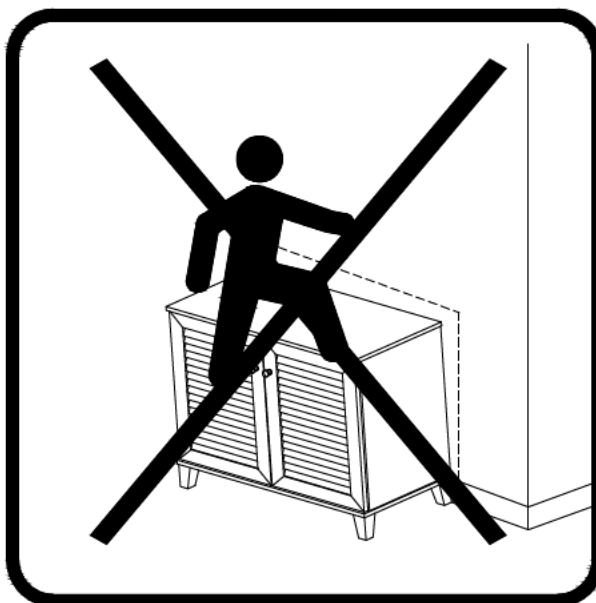
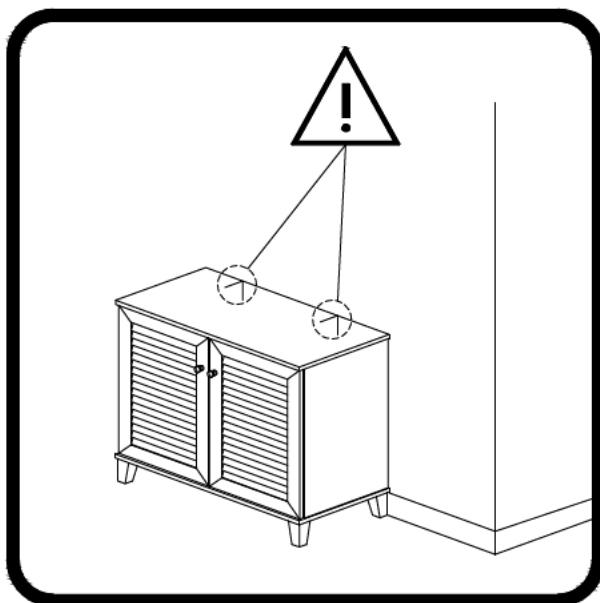


- 4. Add safety strap (16), washer (17) using 3.5x15mm screw (13) to back of cabinet.**



- 5. Finally, attach safety strap (16) and washer (17) using 4x30mm screw (15) to the wall.**





⚠ WARNING	
	<p>Children have died from furniture tipover. To reduce the risk of furniture tipover:</p> <ul style="list-style-type: none">• ALWAYS install tipover restraint provided.• NEVER put a TV on this product.• NEVER allow children to stand, climb or hang on drawers, doors, or shelves.• NEVER open more than one drawer at a time.• Place heaviest items in the lowest drawers. <p><i>This is a permanent label. Do not remove!</i></p>



Anti-Topple hardware included for added safety and stability