

# 24" SIGNATURE SERIES REFRIGERATOR

Perlick®

**HP24RS-3** | 24" INDOOR MODEL  
**HP24RO-3** | 24" OUTDOOR MODEL



Glass Door Model



Solid Door Model



Drawer Model

## GENERAL SIGNATURE SERIES FEATURES



- **Industry Exclusive** front-vented RAPIDcool forced-air refrigeration system provides best-in-class cooling performance
- Powerful yet efficient 995 BTU variable-speed compressor ramps up to quickly bring down temperature of room temperature product
- Commercial-grade stainless steel interior and exterior
- All models available with stainless steel or panel ready door. Panel ready doors come ready to accept customer-supplied overlay and handle
- **Industry Exclusive** full extension refrigerator shelves provide easy access for stocking and retrieving product. Shelves glide smoothly in and out of cabinet on stainless steel ball bearing glides
- Zero-clearance hinging allows for abutment with surrounding cabinetry
- Drawer models feature self-closing slides
- Adjustable Crisp White and Cool Blue LED lighting
- Low E, double pane UV-resistant glass provides exceptional insulation and protection from light
- State-of-the-art digital control module
- Comprehensive Full Three Year Warranty plus additional three years on sealed system

## HP24RS/RO FEATURES

- Available with stainless steel solid door, panel ready solid door, stainless steel glass door, panel ready glass door, stainless steel drawers or panel ready drawers
- Includes two (2) full extension refrigerator shelves
- Refrigerator rated for both food and beverage storage
- Storage capacity for 144 cans
- Refrigerator temperature 33°- 42°F

## OPTIONAL ACCESSORIES

(L)	Factory Installed Lock
67991-L/R	Stacking Kit for HP24/HC24/HA24 models
66736	Caster Kit for HP24/HC24/HA24 models
RK24DP	Drawer Pan Tray (3 SS pans with covers)

Perlick accessories are available for purchase through an authorized Perlick dealer. For a full list of accessories and to find a dealer near you, visit [perlick.com/residential](http://perlick.com/residential)

FORM NO. Z2538  
REV. A-09/07/2018

## PRODUCT SPECIFICATIONS

Product Width	23-7/8" (606 mm.)
Product Height	34-1/4" (870 mm.)
Product Depth	24" (610 mm.)
Opening Width	24" (610 mm.)
Opening Height	34-1/2" (876 mm.)
Opening Depth**	24-7/8" (632 mm.)
Refrigerated Volume	5.2 cu. ft.
Door Swing Clearance	25" (635 mm.) minimum
Electrical	115V, 60Hz., 1 Phase, 2.3 amps
Compressor	995, variable-speed
Plumbing	None Required
Annual Energy Usage	275 kWh/yr (solid door) 290 kWh/yr (glass door) 290 kWh/yr (drawers)
Shipping Weight	191 lbs (68.04 kg.)

\*\* Includes 7/8" plug clearance. To achieve 24" depth, you must recess the plug into the wall directly behind the unit.

## INDOOR MODELS

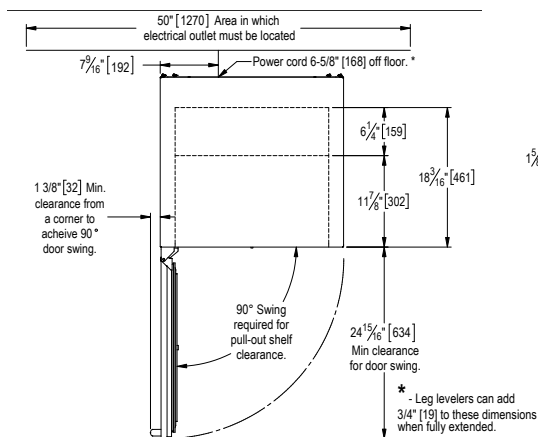
HP24RS-3-1L*	Stainless steel solid door, hinge left
HP24RS-3-2L*†	Panel ready solid door, hinge left
HP24RS-3-3L*	Stainless steel glass door, hinge left
HP24RS-3-4L*†	Panel ready glass door, hinge left
HP24RS-3-5	Stainless steel drawers
HP24RS-3-6†	Panel ready drawers

## OUTDOOR MODELS

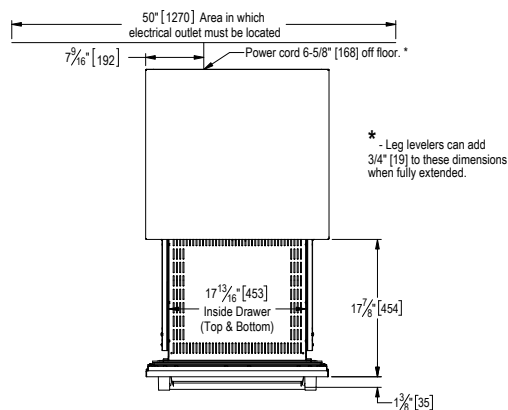
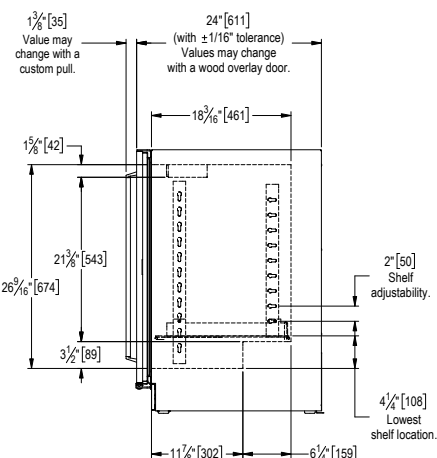
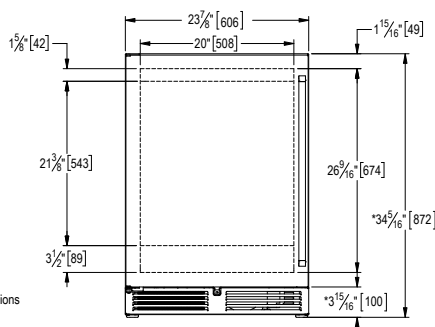
HP24RO-3-1L*	Stainless steel solid door, hinge left
HP24RO-3-2L*†	Panel ready solid door, hinge left
HP24RO-3-3L*	Stainless steel glass door, hinge left
HP24RO-3-4L*†	Panel ready glass door, hinge left
HP24RO-3-5	Stainless steel drawers
HP24RO-3-6†	Panel ready drawers

\* Also available hinge right (R)

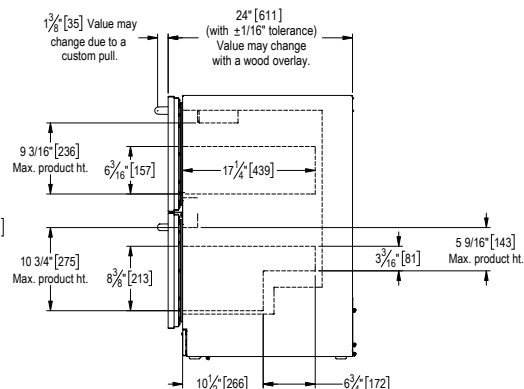
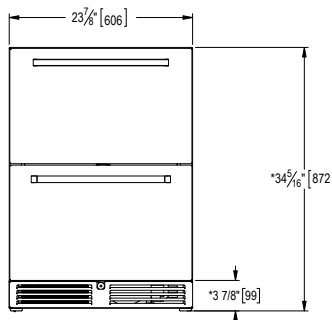
† This unit comes ready to accept customer-provided overlay panel and handle



Door Models



Drawer Models



California Prop 65 Notice:

**WARNING:** The materials used in this product may contain chemicals known to the State of California to cause cancer and birth defects or other reproductive harm. For more information go to [www.P65Warnings.ca.gov](http://www.P65Warnings.ca.gov).

FORM NO. Z2538  
REV. A-09/07/2018