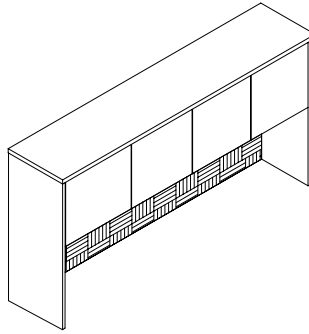


# ASSEMBLY INSTRUCTIONS

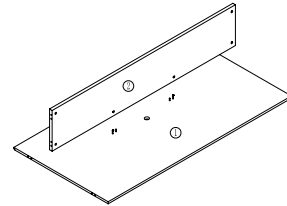
## HUTCH WITH DOORS

### COMPONENTS:

- (1) BACK PANEL
- (2) CENTER SHELF
- (3) SHELF DIVIDER
- (4) SIDE PANEL
- (5) SIDE PANEL
- (6) TOP PANEL
- (7) DOORS
- (8) TACK BOARD

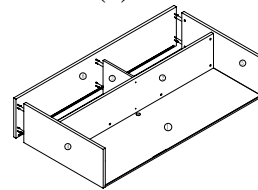


### STEP ONE:



PLACE BACK PANEL (1) ON FLAT SURFACE AND INSTALL CAM LOCKS (A) AND DOWELS ©

INSTALL CAM LOCKS (A) AND DOWELS(C) INTO CENTER SHELF (2) AND AFFIX TO BACK PANEL (1) WITH KLIX CAMS (B) AS DIRECTED. SEE ILLUSTRATION (a).



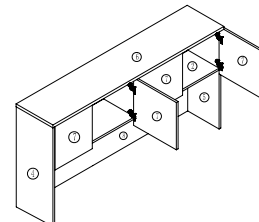
### STEP TWO:

LOCATE SHELF DIVIDER (3) AND PLACE SCREWS (G) INTO CENTER SHELF (2) DO NOT TIGHTEN. SEE ILLUSTRATION ©

INSTALL CAM LOCKS (A) AND DOWELS (C) INTO SIDE PANELS (4) AND (5) AFFIX TO BACK PANEL (1) AND CENTER SHELF WITH KLIX CAMS (B) AS DIRECTED (b)

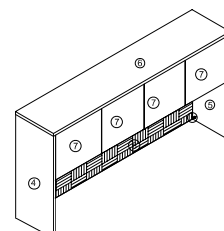
INSTALL CAM LOCKS (A) AND DOWELS (C) INTO TOP PANEL (6) THEN AFFIX TO SIDE PANELS (4) AND (5), AND SHELF DIVIDER (3) WITH KLIX CAM (B)

TIGHTEN SCREWS (G) THROUGH CENTER SHELF (2) INTO SHELF DIVIDER (3). SEE ILLUSTRATION (c)



### STEP THREE:





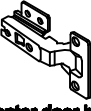
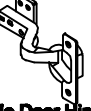




INSTALL CENTER DOOR HINGES (D) TO INTERIOR DOORS (7) WITH SCREWS (H) AS ILLUSTRATION (d) AND EXTERIOR DOORS (7) WITH SIDE DOOR HINGES (E) WITH SCREWS(H). SEE DETAIL X-X FOR ALIGNMENT.



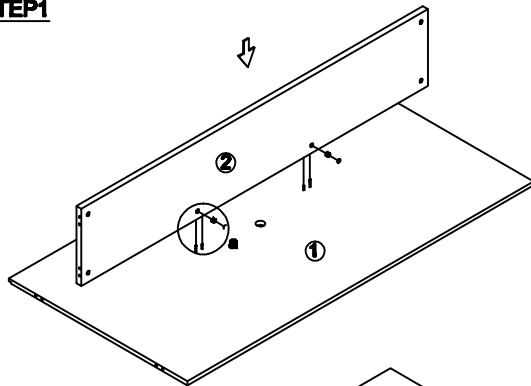
### STEP FOUR:

INSTALL TACK BOARD INTO THE BACK WITH SCREWS (I) AS ILLUSTRATION(e). INSTALL GROMMET (F) INTO BACK PANEL (1).

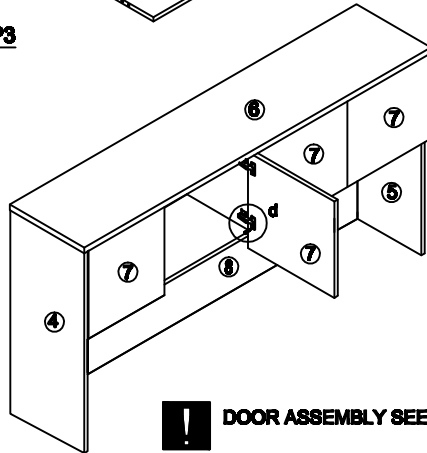
## Assembly Instructions HUTCH WITH DOORS

TUX010CL	TUX011KL		TUN026	TUN022DH	TUN023DH	TUN017SC	TUN018SC	TUN018SC	TUN016BG
<b>A</b>  Cam lock 16Pcs+2Pcs(espere)	<b>B</b>  Klix Cam 16Pcs+2Pcs(espere)	<b>C</b>  Cam Cover 16Pcs+2Pcs(espere)	<b>D</b>  Dowel 17Pcs	<b>E</b>  Center door hinges 4Pcs	<b>F</b>  Side Door Hinges 4Pcs	<b>G</b>  JCBC Black Grommet 2Pcs	<b>H</b>  Screw #4 32Pcs+1Pcs(espere)	<b>I</b>  Screw #4 tack board 6Pcs+1Pcs(espere)	<b>J</b>  35mm Black Grommet 1Pcs

### STEP1

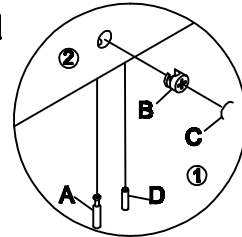


### STEP3




DOOR ASSEMBLY SEE PAGE THREE

**a**

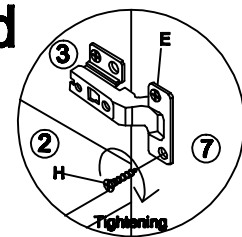


**IMPORTANT:  
FUNCTION OF KLIX CAM**

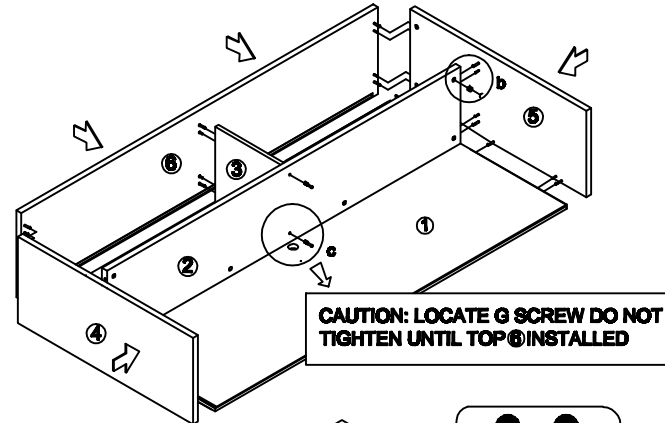
 1/4 RIGHT  
TURN FOR  
LOCKING

MAKE SURE THE ARROW IS  
POING UPWARDS BEFORE  
INSERTING INTO THE PANELS  
HOLE

**d**

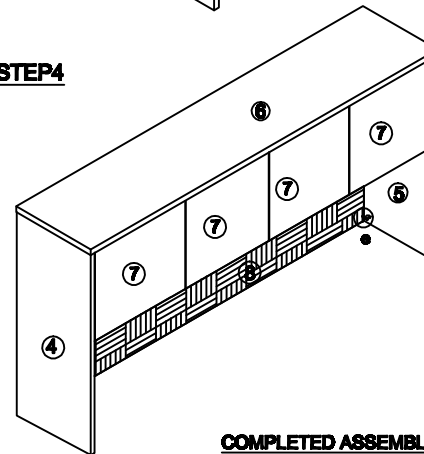


### STEP2



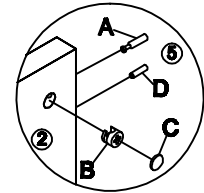
**CAUTION: LOCATE G SCREW DO NOT  
TIGHTEN UNTIL TOP 6 INSTALLED**

### STEP4

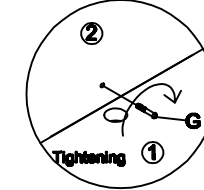


**COMPLETED ASSEMBLY**

**b**

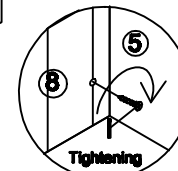


**c**



YOUR PEOPLE ARE RESPONSIBLE TO  
ASSEMBLE AND MOVE THIS MODEL.

**e**



### IMPORTANT NOTE:

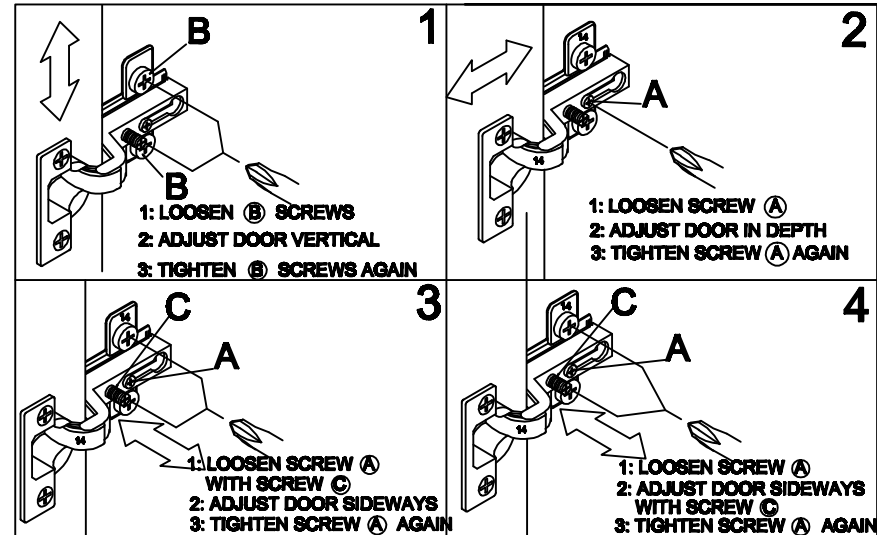
- Place all laminated parts on a clean and smooth surface such as a rug or carpet to avoid the parts from being scratched.
- Check to be sure that you have all parts and hardware.
- Remove all wrapping materials, including staples & packing straps before you start to assemble.
- Don't tighten all screws/bolts until all completely assembled.
- Keep all hardware parts out of reach of children

# Assembly Instructions

## HUTCH WITH DOORS

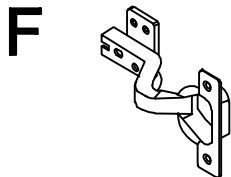
Please note that hinges for side/center doors are different:

1. Do not mix bag #E & #F
2. Assemble side doors first, then assemble the center doors.

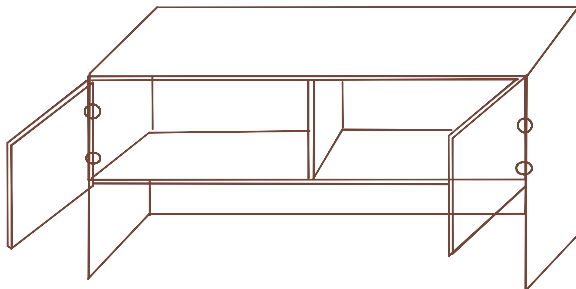


## ATTENTION!

These hinges are for **Left/Right Side Doors** assembly only.

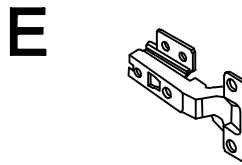


The hinges are goose-neck type for Left/Right sides



## ATTENTION!

These hinges are for **Center Doors** assembly only.



The hinges are straight type for center doors

