

# Double Rail Extendable Panel Track Installation Instructions

U.S. & INTERNATIONAL PATENTED



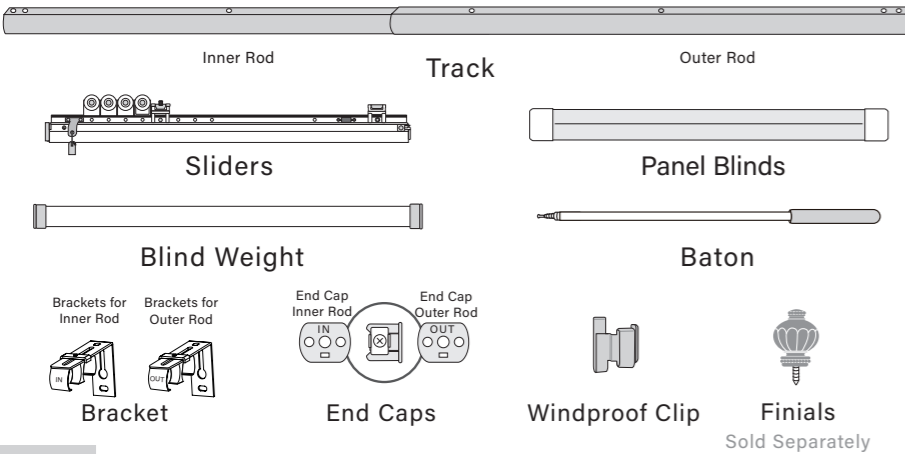
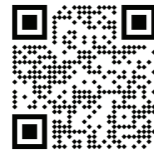
2021 USA MUSE DESIGN AWARDS SILVER WINNER



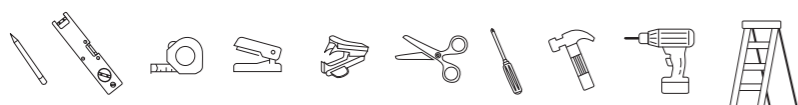
2021 USA IDEA DESIGN AWARDS

Panel Width	Panel Height
23.5"	91.5"/115"
31.5"	115"

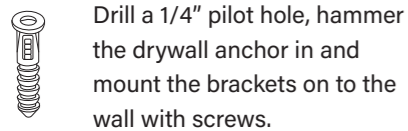
These instructions use a 10 panel track as an example; Installation steps will work with 8-12 panel quantity. For more installation information, scan the QR Code or visit [bit.ly/roddesyne-youtube](https://bit.ly/roddesyne-youtube)



## Tools



### Note 1 Drywall Anchor



Drill a 1/4" pilot hole, hammer the drywall anchor in and mount the brackets on to the wall with screws.

### Note 2 Adjustable Baton (for 31.5" panel)



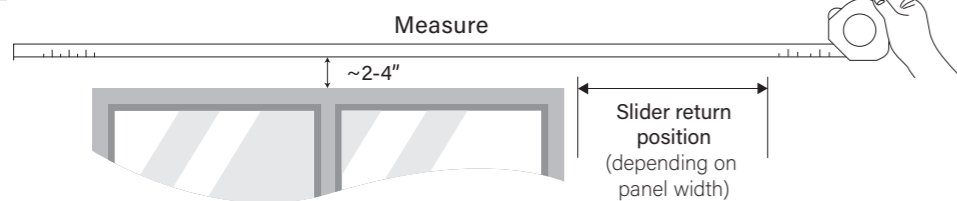
Hold the outer rod, loosen the inner rod to adjust the length. (Inner and outer rods should overlap at least 2 in.)

### Note 3 WARNING: Adult installation required

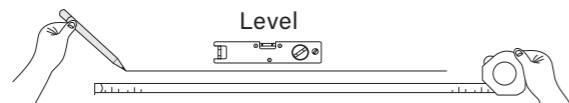
This product contains small parts. Keep small parts away from children during installation to avoid suffocation caused by children swallowing. Seek immediate medical attention if small parts are swallowed.

## Step 1.a Wall Installation (for ceiling installation, see step1.b)

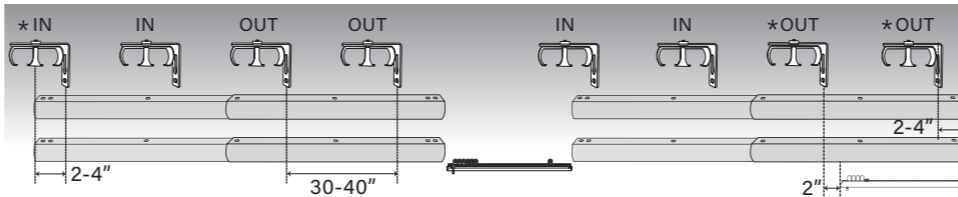
a-1 Measure the overall coverage needed, including the slider return position.



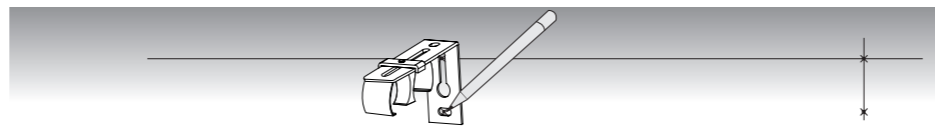
a-2 Draw a line where the brackets will be installed.



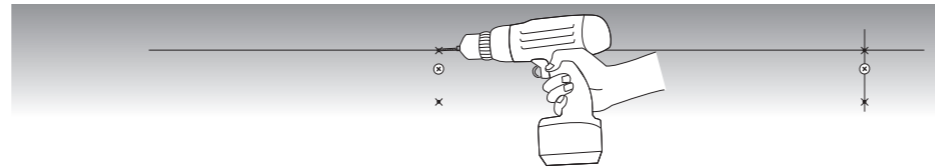
a-3 Place the tracks and brackets as shown below. Inner rods should be pulled out from the left side of the outer rods. Inner rods will attach to IN brackets and outer rods will attach to OUT brackets. The brackets with \* symbol should be installed first (the far left and far right bracket should be 2-4 in. away from the edge of the track. The 2nd bracket from the right should go beyond the sliders by at least 2 in.). For remaining space, each pole should have at least 1 bracket of support, or 2 brackets for larger spans. Brackets approx. 30-40 in. apart.



a-4 Using the bracket, mark the position of the screws on the line.

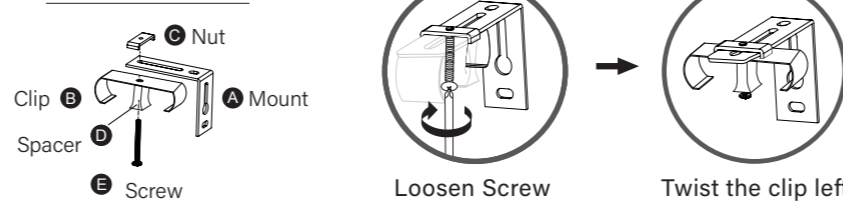


a-5 Drill the pilot hole. Insert the drywall anchor where applicable, and then screw

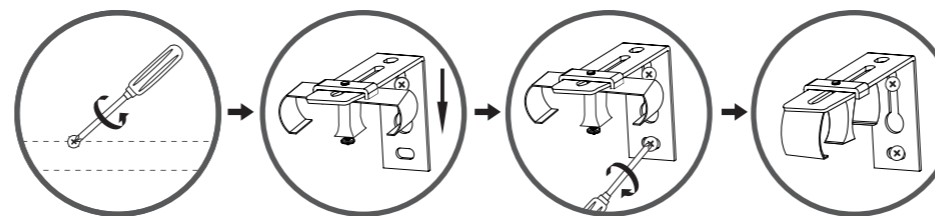


a-6 Loosen the screw on the bracket and turn the clip to the side to access the mounting screws during installation.

### Bracket Breakdown

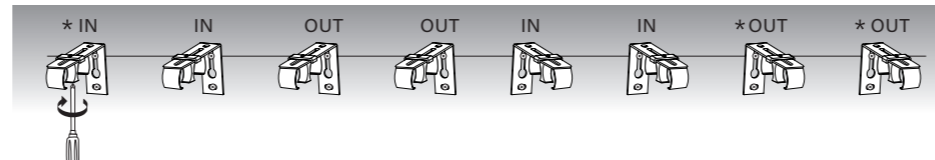


a-7 Loosen the screw on the wall enough to slide the bracket onto the screw. Tighten the screw. Screw in a second screw on the bottom of the bracket. Twist the clip back to the forward position.

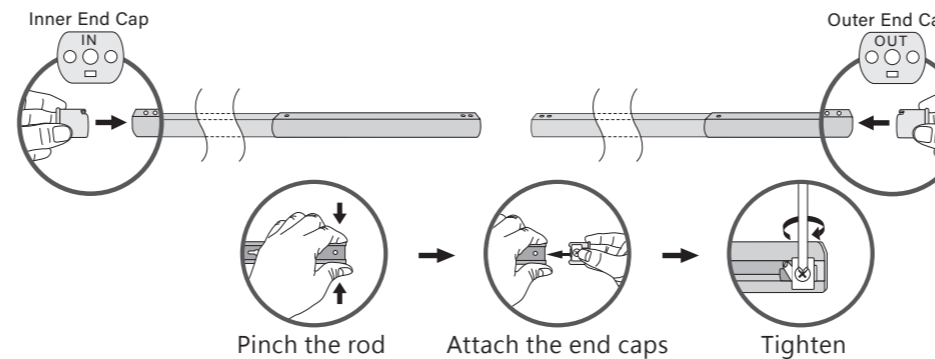


Loosen the screw Slide in the bracket Tighten Clip back to forward

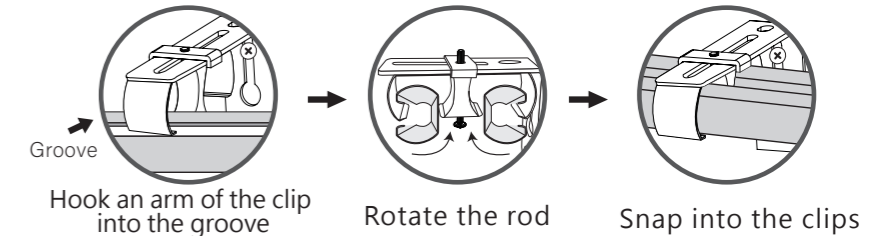
a-8 Loosen the screw on the spacer, then adjust the clips to the desired projection.



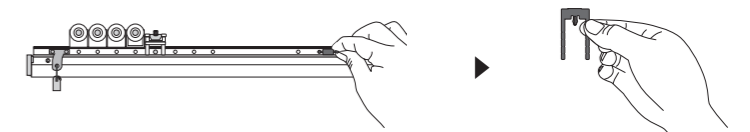
a-9 Place the end caps on the edge of the track and tighten end caps screw. (OUT for outer rod, IN for inner rod)



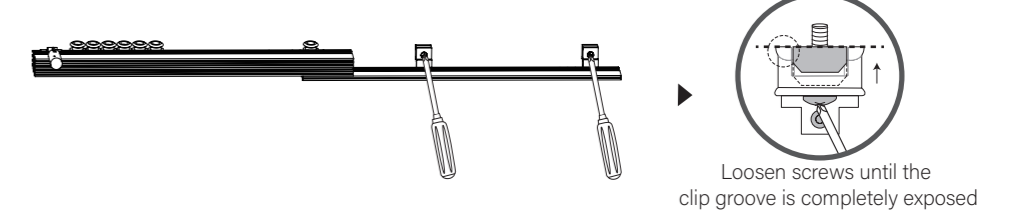
a-10 Hook an arm of the bracket's clip into the groove of the track, rotate the track upward in between the arms and track will snap into place between the clips. Start from right to left and back track to front track.



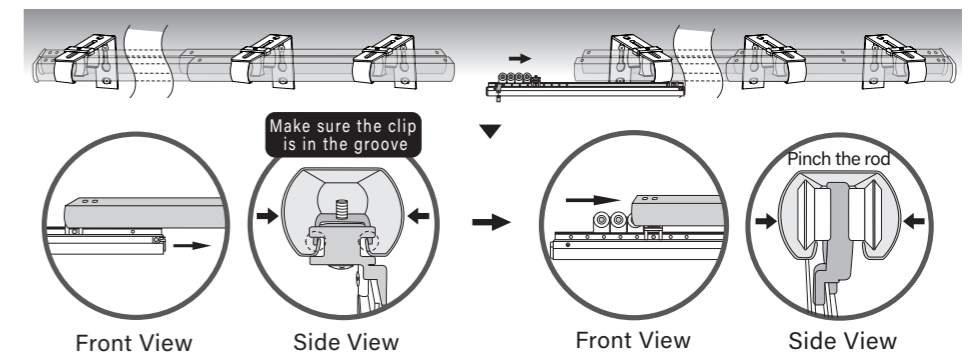
a-11 Remove red clip from the sliders. (During the installation, the clip can be used to keep the sliders in place)



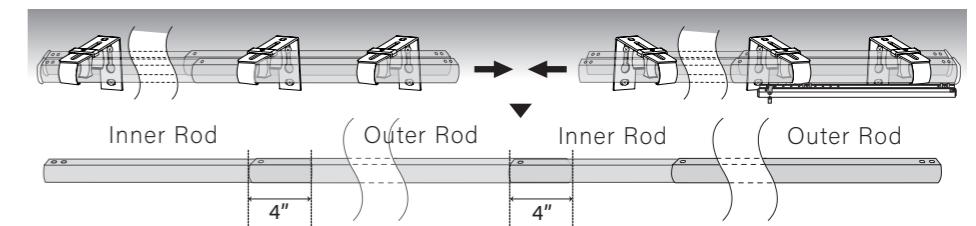
a-12 Loosen the two screws on the last slider or else the slider cannot be inserted into the track.



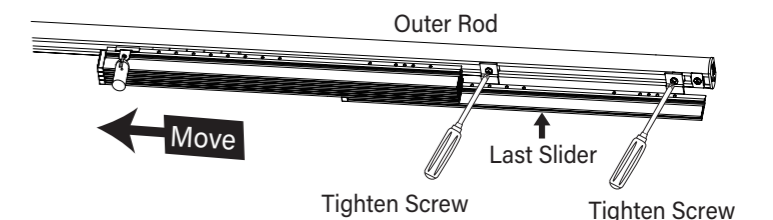
a-13 Insert the sliders. (Pinch the rod for easy installation)



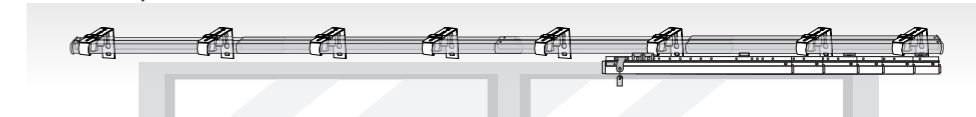
a-14 Attach all inner and outer rods to assemble the track. Ensure there is at least 4 in. overlap.



a-15 Level the sliders with the end of track. Tighten the locking screws on the last slider.



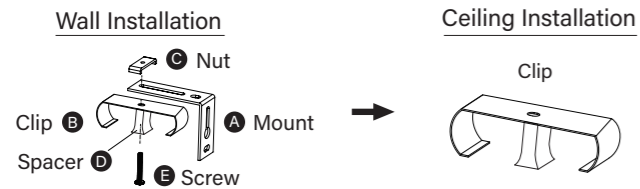
a-16 Tighten all the screws on the brackets and the installation of the track is complete.



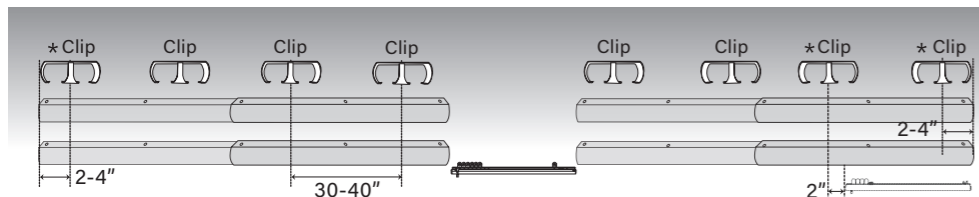
## Step 1.b Ceiling Installation (For wall install see Step 1.a)

b-1 Do steps a-1, a-2

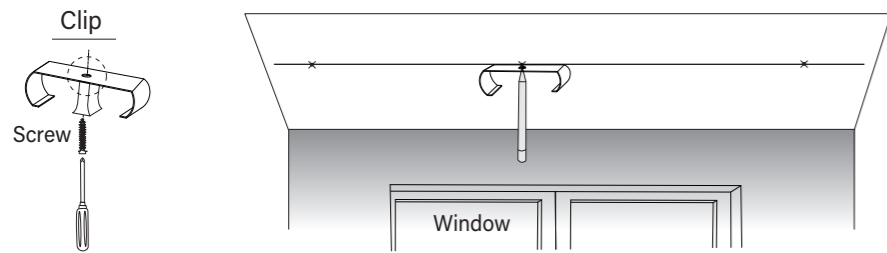
b-2 Detach the clip from the mount by unscrewing the screw.



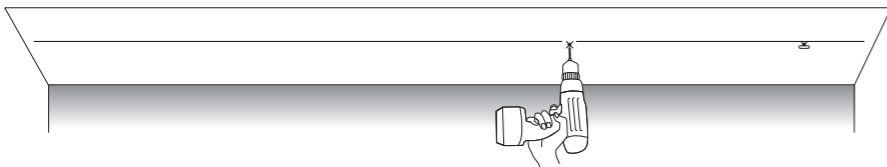
b-3 Place the tracks and brackets as shown below. Inner rods should be pulled out from the left side of the outer rods. Inner rods will attach to IN brackets and outer rods will attach to OUT brackets. The brackets with \* symbol should be installed first (the far left and far right bracket should be 2-4 in. away from the edge of the track. The 2nd bracket from the right should go beyond the sliders by at least 2 in.). For remaining space, each rod should have at least 1 bracket of support, or 2 brackets for larger spans. Brackets approx. 30-40 in. apart.



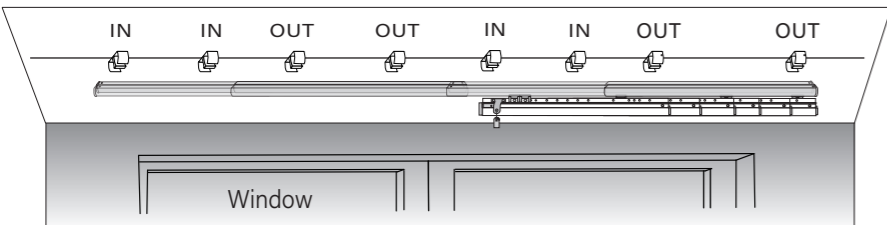
b-4 Using the bracket, mark the position of the screws on the line.



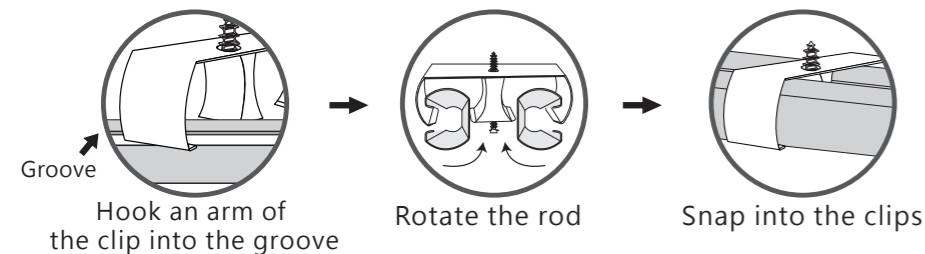
b-5 Drill the pilot holes and insert drywall anchors where applicable.



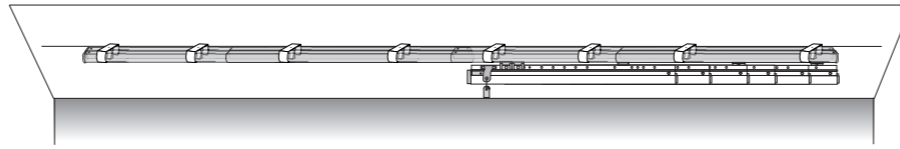
b-6 Mount the clips onto the ceiling, do not tighten all the way.



b-7 Loosen the screw from the spacer. Hook an arm of the clip into the groove of the rod. Rotate the rod upward in between the arms and rod will snap into place between the clips. From right to left and back to front.

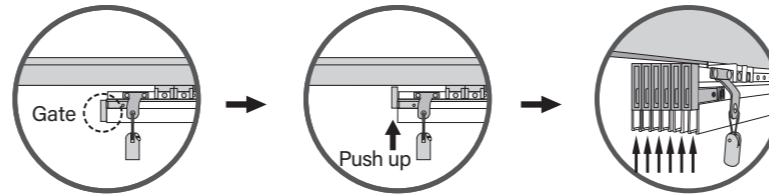


b-8 After doing steps a-12 through a-16, tighten all the screws on the ceiling clips and the installation of the track is complete.

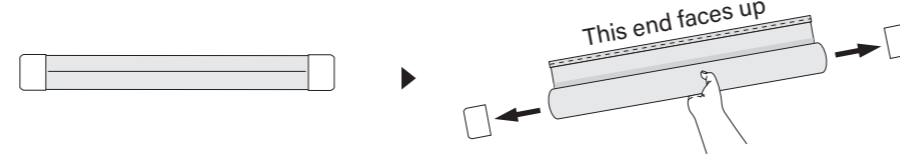


## Step 2 Panel Blind Installation

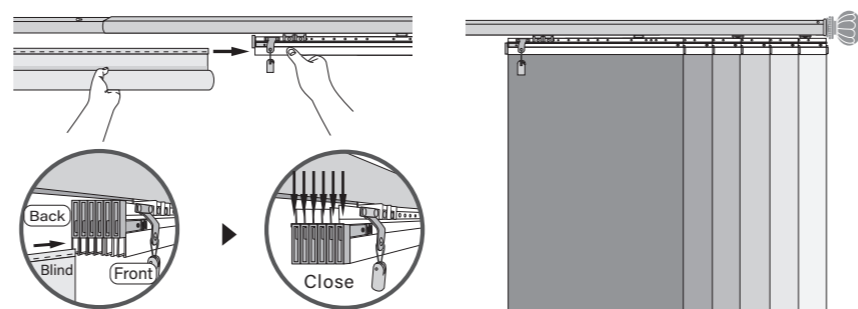
2-1 Push the gates on the sliders up to open the grooves for the panels.



2-2 Discard the caps on the panels.



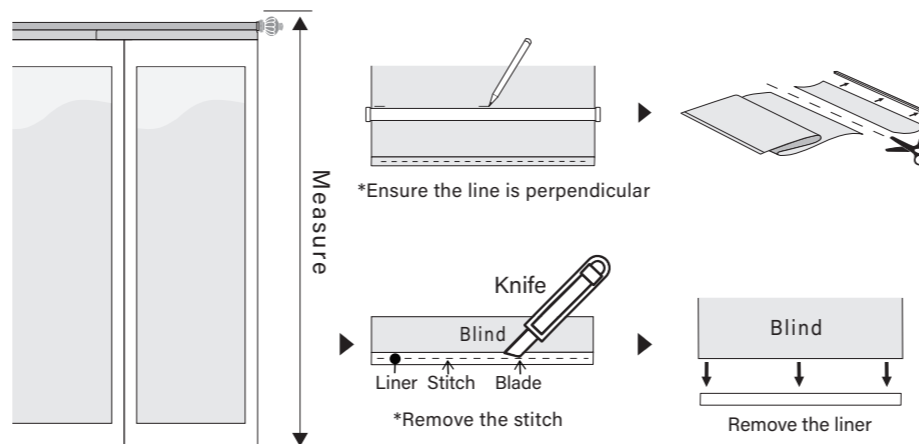
2-3 Slide the panel liner horizontally into the sliders, starting from the back.



Start from the last slider to the first

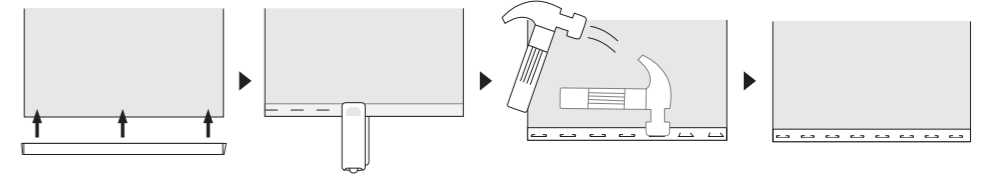
## Step 3 Trimming Blinds (Optional)

3-1 Measure the overall installation length. Use the weight as a straight edge to mark the desired length. Trim the blind to size and remove the liner from the scrap.



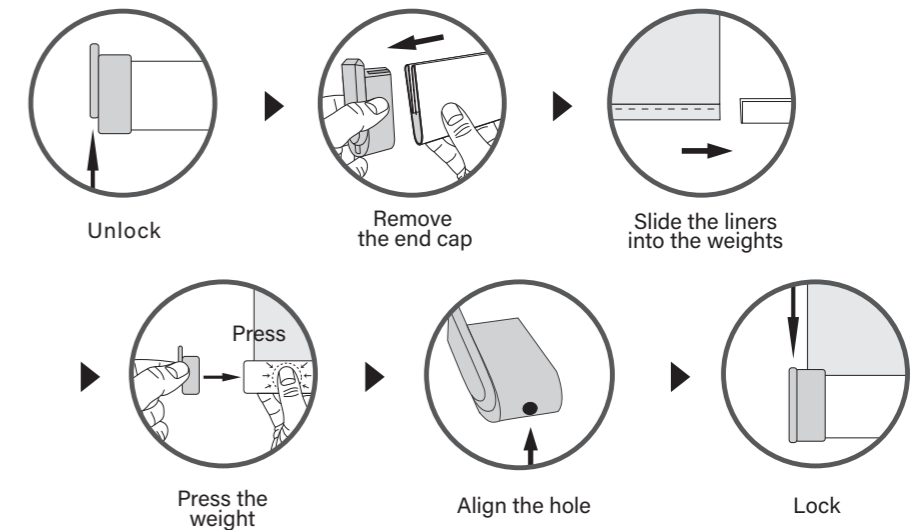
**Note** The liner can be reused on average 3 times.

3-2 Put the plastic liner on the bottom of the trimmed panels spacing each staple 2" apart. Hammer the staples flat.



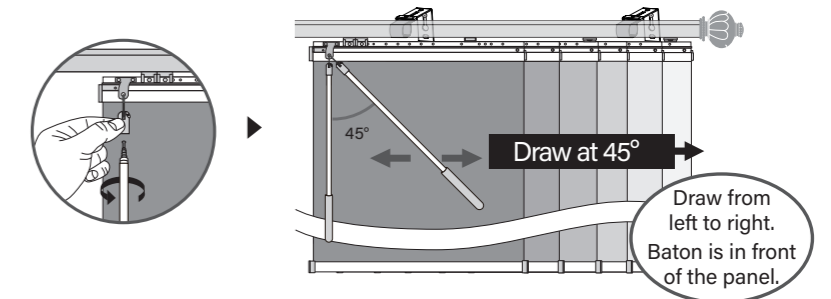
## Step 4 Blind Weight Installation

To install the weights, push open the lock on the end caps and remove the end caps. Slide the liners into the weights and reattach the end caps.



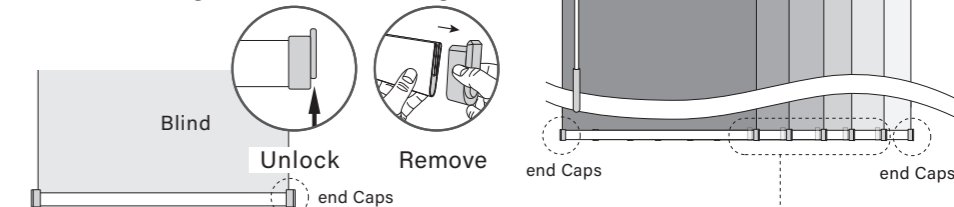
## Step 5 Baton Installation

Screw in the baton and the installation is complete. Draw at 45° for the best results.



## Step 6 Windproof Clips Holds the blinds together when windy

6-1 Remove all the end caps on the right side of the blind weights, the last piece of blind weight remains unchanged



6-2 Replace all removed right end caps with windproof clips

