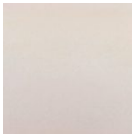




## Ceramic ADA Outdoor LED Flat Cylinder Wall Sconce - Open Top & Bottom



### GLAZES (GROUP 1):



Matte White (MAT)

### Lamping:



LED

**Configured SKU:** CER-5505W-MAT

### description:

ADA Outdoor LED Flat Cylinder – Open Top & Bottom

### Primary Shade Material:

[Ceramic](#)

### Frame Style:

[Ambiance](#)

### Finish Groups:

[Bisque, 1, 2, 4](#)

### ul/etl listing:

Suitable for Damp Locations

### Feature:

[ADA](#), [Ceramic](#), [Dedicated LED](#), [Made in USA](#), [Outdoor](#)

### optional led:

12W 1,000 Initial Lumens

### standard led:

12W 1,000 initial lumens

### dimension:

9.25" H x 5.75" W x 4" Proj.

### mounting center:

4.75"

### notes:

Made in USA, This item is available in up to 40 hand-painted finishes, as well as unfinished ceramic bisque (BIS) which is paintable, Dedicated LED engine included; Color Temperature = 3000K; Minimum CRI = 90; Dimming is compatible with Incandescent/Triac or ELV dimmers, Unfinished ceramic Bisque can be installed in its natural form or painted (instructions included), Outdoor fixture includes patented Socket Shelter, which allows for a nice distribution of up and downlight