

# INSTALLATION INSTRUCTIONS

## For LED Pendant mount

### READ AND SAVE THESE INSTRUCTIONS

#### WARNING! SHUT POWER OFF AT FUSE OR CIRCUIT BREAKER

#### AVERTISSEMENT! COUPER LE COURANT AU NIVEAU DES FUSIBLES OU DO DISJONCTEUR

##### ASSEMBLING THE FIXTURE (Fig.1 )

- 1 Shut off power at the fuse box or circuit breaker. Remove the old fixture including the mounting hardware.
- 2 Carefully remove the fixture from the carton and check that all parts are included as show in Figure 1. Unscrew ( G ) to remove the mounting plate ( A ) from the canopy ( F ).
- 3 Tighten the iron Rod ( H ) to the lamp body .
- 4 Position mounting plate(A) on the ceiling ,and mark the location of the dry wall anchors(W).Pre-drill the holes for the dry wall anchors ,Insert the dry wall anchors(W) into the ceiling ,Attach the mounting plate (A) to the junction box using the mounting screws(B,size 8#-32N 1/2").The side of the mounting plate marked "GND" must face out.Place the wood screw (T) through the slot hole into the dry wall anchor(W) to secure the mounting

##### CONNECTING THE WIRES (Fig. 3)

- 5 Connect the electrical wire as shown in figure 2,making sure that all wire connectors are secured. If your junction box has a ground wire (green or bare copper), connect the ground wire from the fixture to it. Otherwise connect fixture ground wire (C) directly to the mounting plate using the green screw (D)provided. Tuck the wire connections neatly into the ceiling junction box as you hold the canopy towards the ceiling.

##### FINISHING THE INSTALLATION (Fig.1)

6. Fix the canopy(F) into the mounting plate (A) with screw (G).Adjust the length of the cable to pull or push until the desired length by twist release the screw(S) ,ensure to re-tighten the set screw (S) after adjustment .

- 7.Fix the glass shade (J) to the lamp body (I)

Your installation is now complete. Return power to the junction box and test the fixture.

**CAUTION/ATTENTION:** When handling the fixture,do not apply pressure to the LEDs. Hold the fixture by the frame only.

**IMPORTANT:** Fixture should be installed by a qualified electrician to ensure proper wiring and installation. Dimmable with ELV and/or LED compatible wall dimmer switches

Fig.1

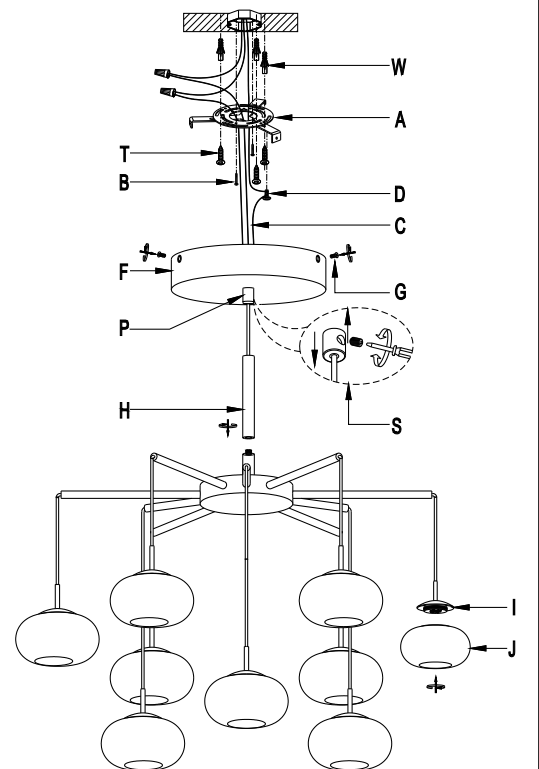
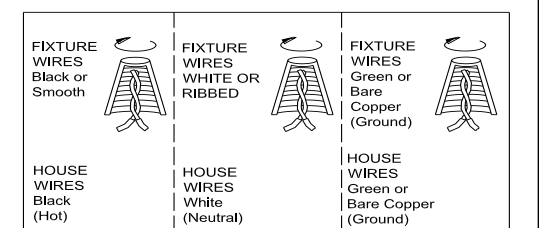


Fig.3



# INSTALLATION INSTRUCTIONS

## For Semi-flush mount

READ AND SAVE THESE INSTRUCTIONS

**WARNING! SHUT POWER OFF AT FUSE OR CIRCUIT BREAKER**  
**AVERTISSEMENT! COUPER LE COURANT AU NIVEAU DES FUSIBLES OU DO DISJONCTEUR**

### ASSEMBLING THE FIXTURE (Fig.2)

- 1 Shut off power at the fuse box or circuit breaker. Remove the old fixture including the mounting hardware.
- 2 Carefully remove the fixture from the carton and check that all parts are included as show in Figure 1. Unscrew ( G ) to remove the mounting plate ( A ) from the canopy ( F ).
- 3 Disconnect the wire nut ( L ) , remove the "8" buckle ,unscrew the hex nut ( N ).Release the screw( S ) by the flat-philips screw driver ,pull the cable wire from the canopy(F) ,take away the part ( P ) and rod ( H ) .
- 4 Repeat 3 to connect the wire ,pass the part ( O ) through the hole of the canopy ( F ),tighten the screw ( N ).
- 5 Position mounting plate(A) on the ceiling ,and mark the location of the dry wall anchors(W).Pre-drill the holes for the dry wall anchors ,Insert the dry wall anchors(W) into the ceiling ,Attach the mounting plate ( A ) to the junction box using the mounting screws(B,size 8#-32N 1/2").The side of the mounting plate marked "GND" must face out.Place the wood screw ( T ) through the slot hole into the dry wall anchor(W) to secure the mounting

### CONNECTING THE WIRES (Fig. 3)

- 6 Connect the electrical wire as shown in figure 2,making sure that all wire connectors are secured. If your junction box has a ground wire (green or bare copper),connect the ground wire from the fixture to it. Otherwise connect fixture ground wire ( C ) directly to the mounting plate using the green screw ( D )provided. Tuck the wire connections neatly into the ceiling junction box as you hold the canopy towards the ceiling.

### FINISHING THE INSTALLATION (Fig.1)

7. Fix the canopy(F) into the mounting plate ( A ) with screw ( G ).
- 8.Fix the glass shade ( J ) to the lamp body ( I )

Your installation is now complete. Return power to the junction box and test the fixture.

**CAUTION/ATTENTION:** When handling the fixture,do not apply pressure to the LEDs. Hold the fixture by the frame only.

**IMPORTANT:** Fixture should be installed by a qualified electrician to ensure proper wiring and installation. Dimmable with ELV and/or LED compatible wall dimmer switches

### LED module replace(Fig.4)

Shut off power before replacing

- 1:Each lamp head there have a LED module ,if any one of them does not work ,replace the module ( K ) as shown in Fig.4.Make sure the power is off when you replace .
- 2:Remove the glass shade ( J ) of no work one ,twist off the module screw ,take off the module ( K ) .Save these parts for subsequent service.
- 3:Press the quick connector(M),pull out the wire ,replace a new module ;
- 4:Repeat 4-1 to assembly the fixture Your replace is now complete , Re-install the fixture to the ceiling as shown in Fig.1,return power to the junction box and text the fixture

Fig.2

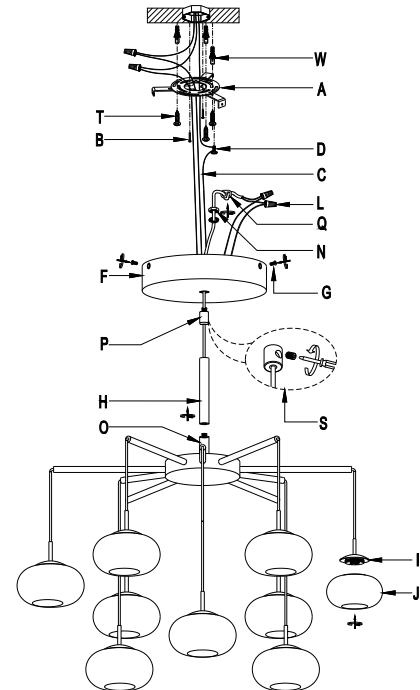


Fig.3

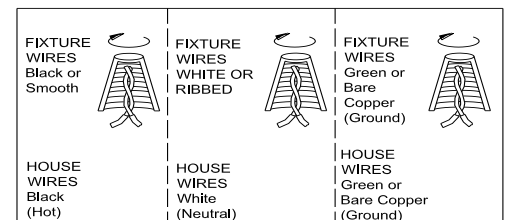


Fig.4

