



STONWORK BARCODE BLACK JADE 12X24 3D POLISHED MARBLE TILE



Transform your walls with the genuine stone craftsmanship of the Stonework Barcode Black Jade 12x24 3D Polished Marble Tile. Adding drama: the indisputably luxurious look of saturated Black Jade and the subtle play of light and shadow in the tile's peaks and valleys. Enjoy the grandeur of natural stone with this, a classic collection with modern notes.

COLORS



Alaska
White



Black
Jade



Botticino



Carrara

SIZES



12x24" Barco



12x24" Flute



12x24" Peal

SPECIFICATIONS

Colorway
Black

Commercial
Wall Only

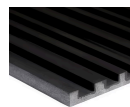
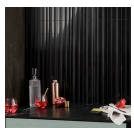
Finish
Polished

Item Size
12" x 24"

Material
Black Jade

Residential
Wall Only

PRODUCT GALLERY



DETAILED SPECS

Available Sizes

12x24" Fluted, 12x24" Barcode, 12x24" Peak,
12x24"

Coverage

2

Location

Backsplash, Bathroom, Indoor, Kitchen,
Outdoor

Look

3D

Patterns

Rectangle

Pieces Per Box

2

Recommended Grout Joint

Match Sheet

Sq Ft Per Box

4

Stone Type

Black Jade

Style

Contemporary, Craftsman, Modern

Tile Thickness

Low: 9 mm High: 19 mm

Tile Use

Backsplash, Bathroom Wall, Kitchen Wall,
Outdoor Wall, Shower Wall, Wall Tile

Weight

6.2 lbs

DIMENSIONS

Sample Size

3" x 6"

STONWORK



With a nod to the magnificent columns of the ancient world, the Stonework Collection demonstrates simple decorative brilliance in natural stone. This collection is available in 3D-textured patterns in multiple marble options. For a cohesive look, you can easily match your Stonework walls to floor tile made of the same marble.