

Nantucket Corbels

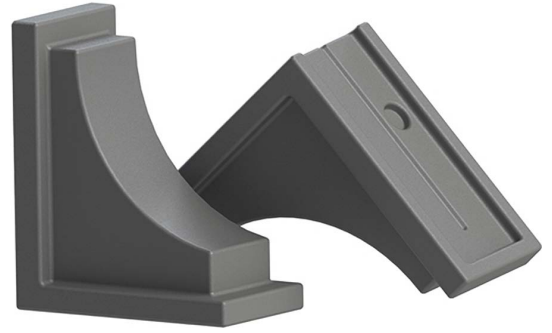
2pk



DESCRIPTION

Complete the look of your Nantucket window box with a pair of decorative supports. The curved brackets are the perfect finishing touch to your installation.

- Made from 100% high-grade polyethylene
- Designed specifically for Nantucket window boxes
- Brackets attach easily to the existing wall mount brackets
- Weather resistant, low maintenance material
- Warranty: 15-Yr Residential Use / 5-Yr Commercial Use



PRODUCT DIMENSIONS

Outside Dimensions: 8 in L x 3.9 in W x 7 in H (20.3 cm x 9.9 cm x 17.8 cm)

Wall Thickness: 0.125 in (3.17 mm)

Part Weight: 1.4 lbs (0.6 kg)

Material: Polyethylene

Contents: 2 decorative corbels and 4 mounting screws

