

POOL SHOT Rock The House

Assembly Instructions

(Model #BY-100)

(REVISION DATE: 08/03/18)

POOL SHOT
by Meese



POOL SHOT Rock The House

Assembly Instructions

(Model #BY-100)

Assembly Tools Needed:

½" Allen Wrench

(2) ½" Sockets

Socket Ratchet, Box End Wrench, and/or Drive Socket

Optional Socket Extension

Garden Hose (If Filling With Water)

Play Sand and Funnel (If Filling With Sand)

Complete Parts List:

- 1 -Fillable Base
- 1 - Backboard
- 1 - Rim
- 1 - Net
- 1 - Basketball
- 4 - 5/16" x 2 1/4" Hex Head Bolt
- 7 - 5/16" Diameter Washer
- 4 - 5/16" Diameter Washer w/ Rubber on one side
- 1 - Orange Plug
- 3 - 5/16" x 2 1/2" Socket Head Screw
- 4 - 5/16" Lock Nuts
- 4 - 7/8" x 13" Orange Strips



Note: We recommend assembly of this unit is performed at the location of your swimming pool where the unit will be used. The side of an inground swimming pool at the three to five foot depth level is the most common area for use. Carefully lift any parts of the unit, as this may cause injury.

NOT INTENDED FOR CHILDREN AGE 12 AND UNDER

Step 1: Decal placement (See Picture on Page 1 for Placement)

Locate the four orange strip decals, lay backboard on the ground front facing up. Located in the center of the backboard is the molded in square, this square has a different texture than the rest of the backboard. Peel off the backing of one of the strips and place on one side of the recessed square. Repeat for the remaining three sides of the square. Any overhang outside of the recessed square can be trimmed off.

Step 2: Rim and backboard assembly

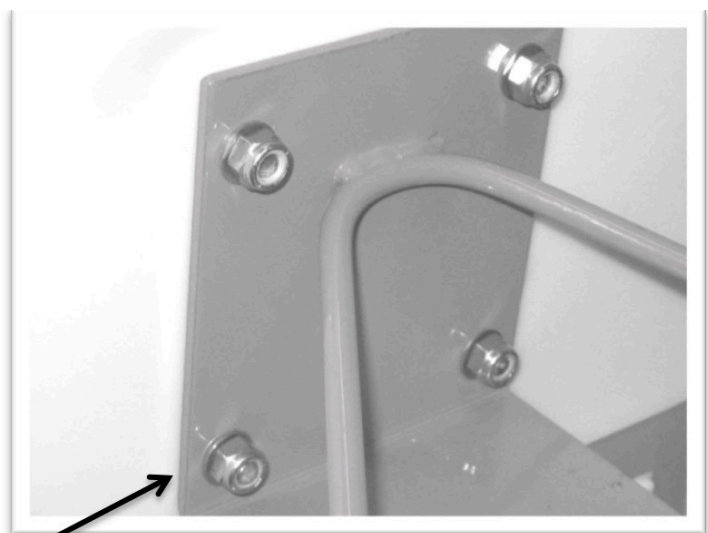
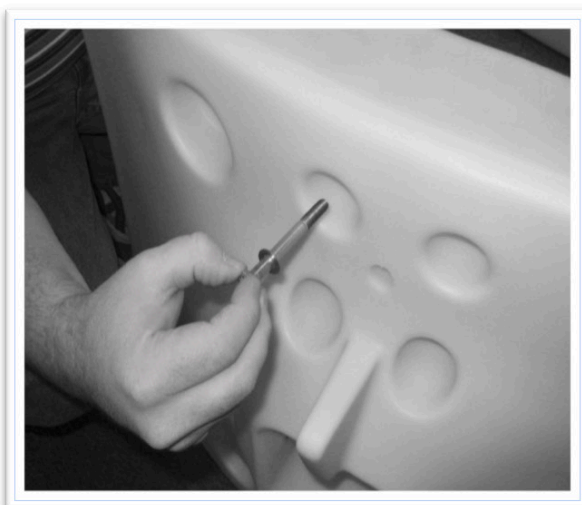
Note: Before starting assembly project, make sure that the backboard is in the upside down position for ease of assembly. (The 4 holes through the backboard are at the top.) You might need a second set of hands to hold the rim in place while applying the screw & lock nuts.

Hardware Needed:

- 4 - 5/16" x 2 1/4" Hex Head Bolt
- 4 - 5/16" Washers
- 4 - 5/16" Washers w/ Rubber on one side
- 4 - 5/16" Lock Nuts

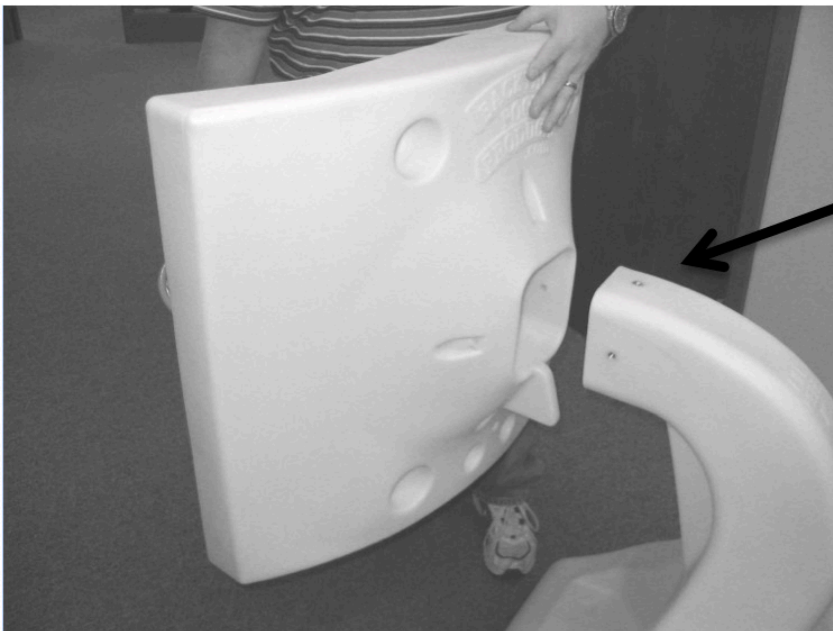
Place a washer on a hex head bolt feed it through the back hole of the backboard and rim. Place a rubber washer on the screw (rubber side toward the rim) and screw the lock nut on. Do not tighten at this point, just make sure that it is on and snug. Repeat for the other 3 holes. After all of the nuts are snug on the bolts, proceed tightening all of the nuts until the bolts are tight to the plastic.

Note: Over tightening the rim nuts could cause stress on the rim/backboard assembly.



Face the rubber side of the washers toward the rim.

Step 3: Attaching the backboard to the base



**3 molded inserts
at the base of the neck.**

Align the backboard hole with the base post. See above. After fitting the backboard to the base, insert a socket cap screw with a washer on into the top hole and hand thread until the screw has engaged the insert in the base. Proceed to the sides and repeat. Once all of the screws are hand threaded, you can proceed tightening with the top screw FIRST using an Allen wrench then tighten the sides. Tighten the screws all the way down until there is proper resistance.

(Remember, Do Not Over Tighten The Screws As Damage To The Unit May Result In Requiring Replacement Components.)

Step 4: Filling the base with sand or water

Hardware Needed:

1 - Orange Plug

Place the fully assembled unit approximately 3 to 6 inches from the edge of the swimming pool. Be sure the hoop is facing the pool and the base is parallel to the pool edge. Make sure base is not overhanging the pool edge and is completely flat on the pool deck.

If using water as weight: before completely filling with water, we recommend that you pour approximately one (1) quart of liquid bleach or chlorine into the base to help prevent algae growth. (not applicable when using sand) take the garden hose and place its end into the fill hole located at the top of base. Turn on the water and completely fill the base to the top of the fill hole.

Step 4: Filling the base with sand or water

If using sand as weight: with a funnel, fill the base with additional sand through the fill hole located at the top of base. Fill the base to about 1/2 to 2/3 of its full capacity with sand.

Now locate the orange plug and insert it into the base fill hole by pressing it down firmly until it is fully seated in place.

CONGRATULATIONS!!!....YOUR ASSEMBLY IS COMPLETE.

BEFORE ANY USE, PLEASE READ ALL THE FOLLOWING SAFETY INFORMATION FOR THIS PRODUCT.

Cautions and Warnings

Make certain that the rim extends well over the edge of the pool

Water base must be completely on decking with no overhang

Caution: do not hang on rim or net

Do not pull unit towards the pool

Do not drag unit along the ground or decking

Be sure the base is always completely flat on the pool deck

Only use a light-weight ball with unit

Pool shot is for swimming pool use only

Adult supervision is required

IMPORTANT!

Every attempt has been made to provide a trouble free product. If in the event you have missing or defective hardware, please call our toll-free customer satisfaction hot line listed below.

MEESE, INC.

1745 Cragmont Street

Madison, Indiana

47250-2874

800-829-4535

Fax: 812-273-1878

meese-inc.com

e-mail: customerservice@meese-inc.com

Care and Maintenance

Inspect this equipment periodically during regular use to insure that unit is in a safe operating condition.

Check for any loose hardware.

Check base for any signs of leakage.

Do not use this equipment if any hardware is loose or missing or structural fatigue or possible equipment failure is evident. Order replacement parts immediately before allowing anyone to use this equipment to avoid possible injuries or property damage.

Play must be halted if unit shows any signs of fatigue or failure.

Chlorine and sunlight are the natural enemies of most materials. to prolong the life of your unit, when the component are not in use for long periods of time, remove them from the swimming pool environment, wash down with plain water using your garden hose and store them out of direct sunlight and moisture.

Never drag components on any type of surface as damage will occur to the parts.

Be absolutely sure to completely drain water from base before storing especially if unit is subjected to freezing temperatures.

Never hang on rim or net. serious injury could result.

Make sure base is always completely situated on swimming pool decking and not overhanging the swimming pool.

Extra parts can be purchased at www.backyardpoolproducts.com.

BE ABSOLUTELY SURE TO COMPLETELY DRAIN WATER FROM BASES BEFORE STORING ESPECIALLY IF UNIT IS SUBJECTED TO FREEZING TEMPERATURES.

* SAVE THESE INSTRUCTIONS FOR FUTURE USE

Limited Warranty

Meese, Inc. warrants that the products manufactured and sold by it will conform to agreed specifications, will be fit for the uses or applications for which designed and will be free from defects in materials and workmanship. This warranty will remain in effect for a period of one (1) year from the date of delivery. The mail in registration slip should be sent immediately following delivery of product for this warranty to become effective. Send registration slip to Meese, Inc. 1745 Cragmont Street, Madison, Indiana 47250-2874. Meese, Inc., at its option, will either repair or replace, excluding freight costs, any nonconforming or defective products, provided Meese, Inc., is given written notice of and an opportunity to inspect the nonconforming or defective products within (30) days after the discovery of the nonconformity or defect. This warranty does not apply to products which have been subject to misuse, misapplication, improper repair, assembly or storage, or which have been otherwise damaged by the fault or negligence of anyone other than Meese, Inc. or its agents.

THIS WARRANTY IS EXPRESSLY MADE IN LIEU OF ALL OTHER WARRANTIES, EXPRESS OR IMPLIED, INCLUDING, WITHOUT LIMITATION, WARRANTIES OF MERCHANTABILITY OR FITNESS FOR A PARTICULAR PURPOSE. MEESE, INC. SHALL NOT BE LIABLE FOR ANY CONSEQUENTIAL, INCIDENTAL OR OTHER DAMAGES.

Cut here

Warranty Registration

Please fill out and mail within 10 days to:

Meese, Inc. 1745 Cragmont Street, Madison, Indiana 47250-2874

First Name	Last Name	
Street Address		
City	State	Zip
Phone Number		
Date Purchased.		
Product Model Number/Description.		
Place of Purchase		
Purchase Price		

We are very interested In your comments. Please tell us what other types of products you are interested in for your swimming pool environment. Thank you for your input.
