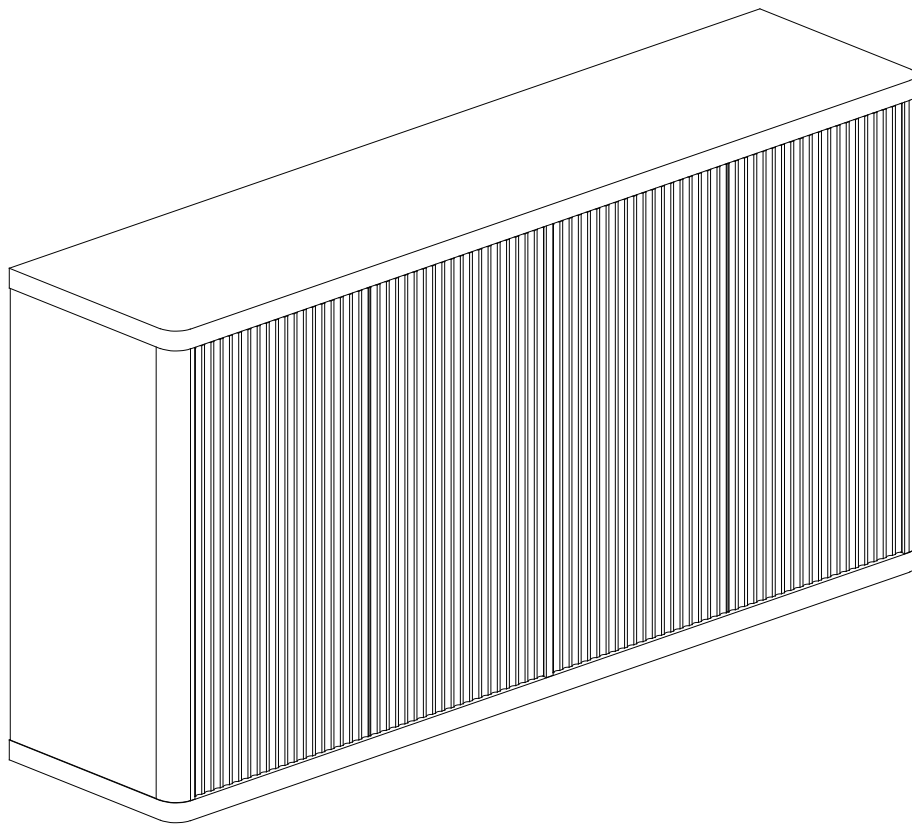


Installation & Assembly



Assembly Instructions

Before beginning the assembly process, please read and save these instructions for reference. Following these guidelines will ensure a smooth and successful assembly of your product.

1. Part Identification:

Carefully separate and identify all the parts included in your package. Confirm that you have all the components listed in the instruction manual. This step will help you avoid any missing or misplaced parts during assembly.

2. Work Surface:

To prevent any scratches or damage to the product, assemble it on a soft mat or a similar protective surface. This will provide a cushioned area for the components and protect the surfaces from unwanted marks.

3. Step-by-Step Assembly:

Follow the assembly instructions provided, proceeding one step at a time. Take care to understand each step properly before proceeding to the next one. This sequential approach ensures that the assembly is done correctly and minimizes the chance of errors.

4. Proper Screw Seating:

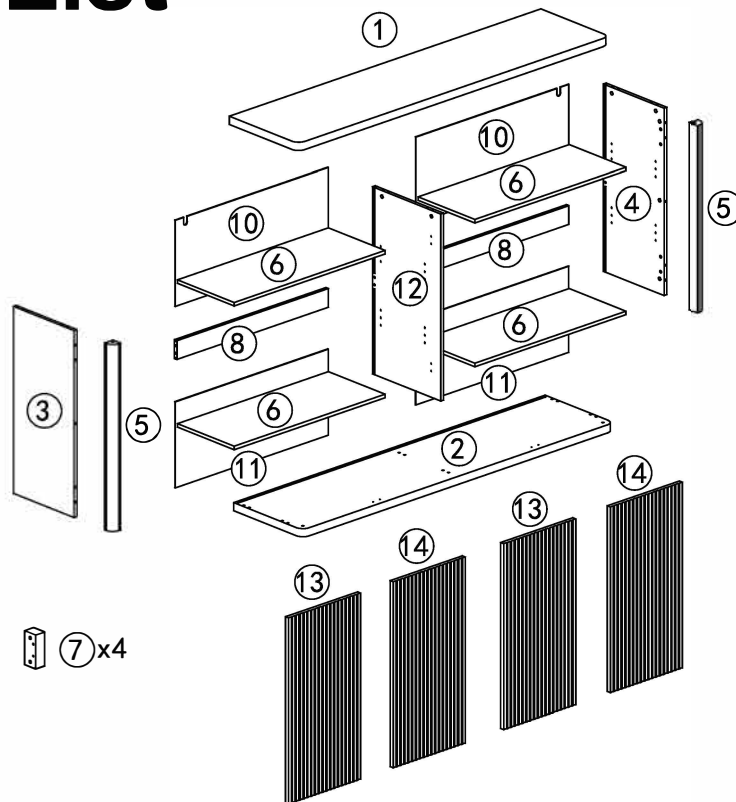
When attaching screws and nuts, it is essential not to fully tighten them until all screws are correctly seated. By partially tightening each screw and nut initially, you can ensure that they are aligned properly and fit securely before final tightening.

5. Avoid Over-Tightening:

While each screw and nut should be tightened correctly, it is crucial not to over-tighten them. Over-tightening can cause damage to the product or compromise its structural integrity. Use the appropriate amount of force to secure the components without excessive tightening.

If you encounter any questions or problems during the assembly process, please do not hesitate to contact us. We strive to provide excellent customer support and will respond to your inquiries within 24 hours. Our team will offer you a suitable solution to address any concerns you may have.

Parts List



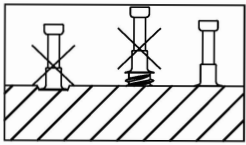
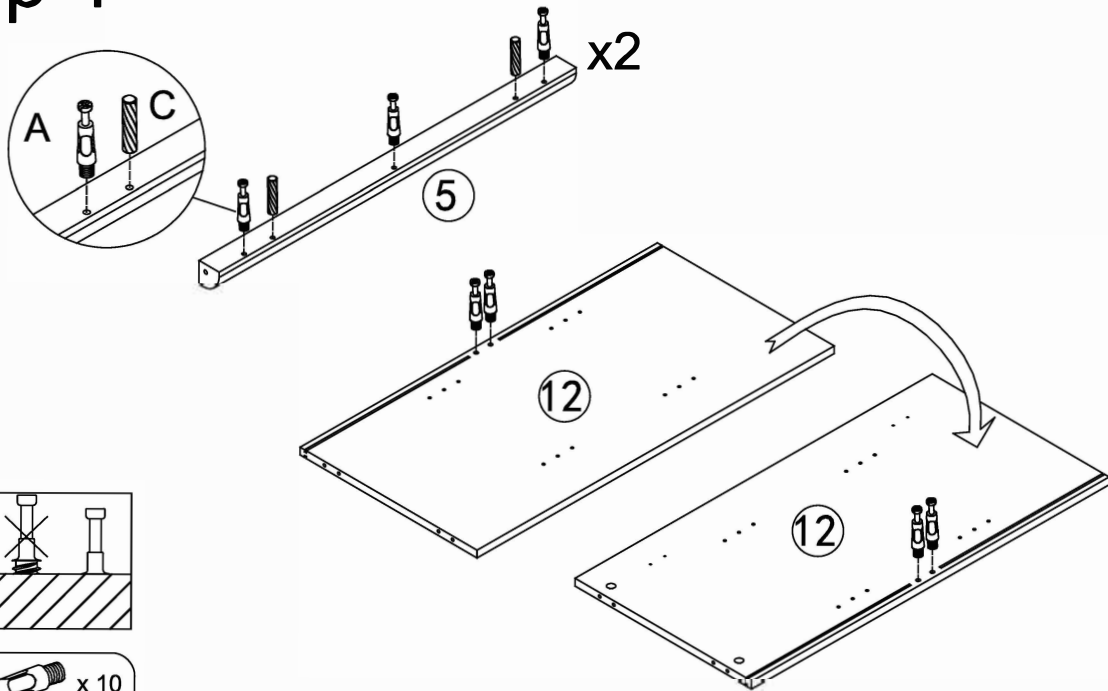
Hardware List

Ax20 M6x32mm	Bx20 ø15x10mm	Cx20 ø8x30mm	Dx6 M7x68mm	Ex4 Press the pin	Fx4 M3x13	Gx32 ø4x14	Hx36 ø3x14
Ix16 Movable Shelf	Jx2 ø4x14	Kx20 Hexagon socket wrench	Lx6 M8x(ø30)x20	Mx8 Hinges	Nx2 Lock wall accessories	Ox2 ø4x35	Px2 Plastic expansion screw
Qx2 Door stop	Rx4 ø3x16	Sx1 M4	Tx8 M6x35				

Code	Description	Quantity
A	M6x32mm Cam bolt	20+2
B	ø15x10mm Cam lock	20+2
C	ø8x30mm Wood dowel	20+2
D	M7x68 Broken tail screw	6+1
E	Press the pin	4
F	Self-tapping screw	4
G	ø4x14 self-tapping screw	32+2
H	ø3x14 self-tapping screw	36+2
I	Movable Shelf	16+2
J	ø4x14 self-tapping screw	2+1

Code	Description	Quantity
K	Backboard clip	20+2
L	M8x(ø30)x20 Adjustable foot	6+1
M	Hinges	8
N	Lock wall accessories	2
O	ø4x35 self-tapping screw	2
P	Plastic expansion screw	2
Q	Door stop	2
R	ø3x16 self-tapping screw	4+2
S	Hexagon socket wrench	1
T	M6x35 hexagonal screw	8+2

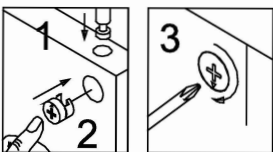
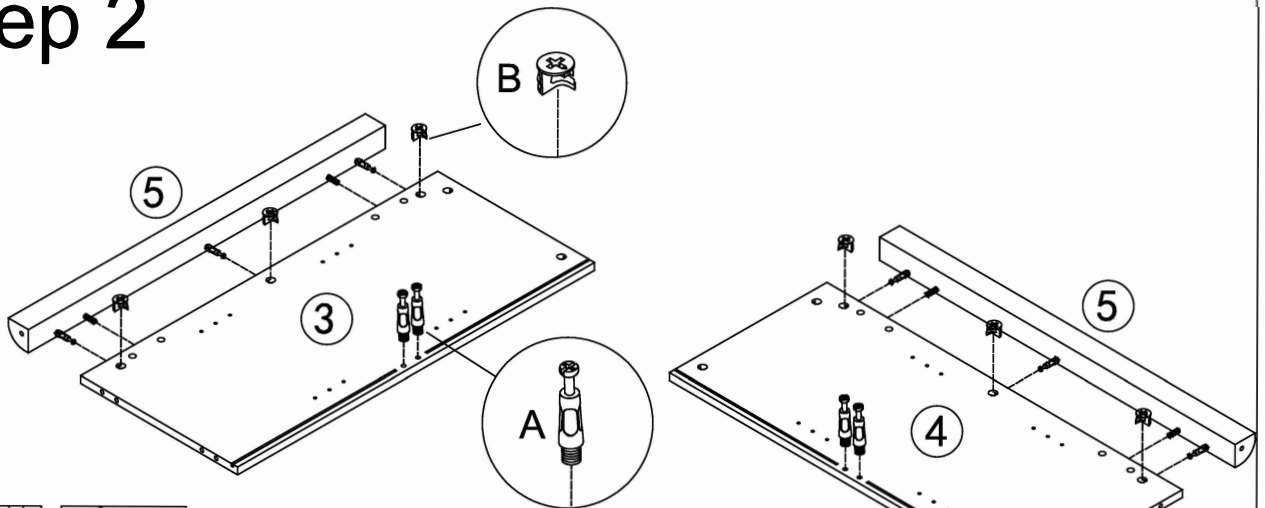
Step 1



A  x 10

C  x 4

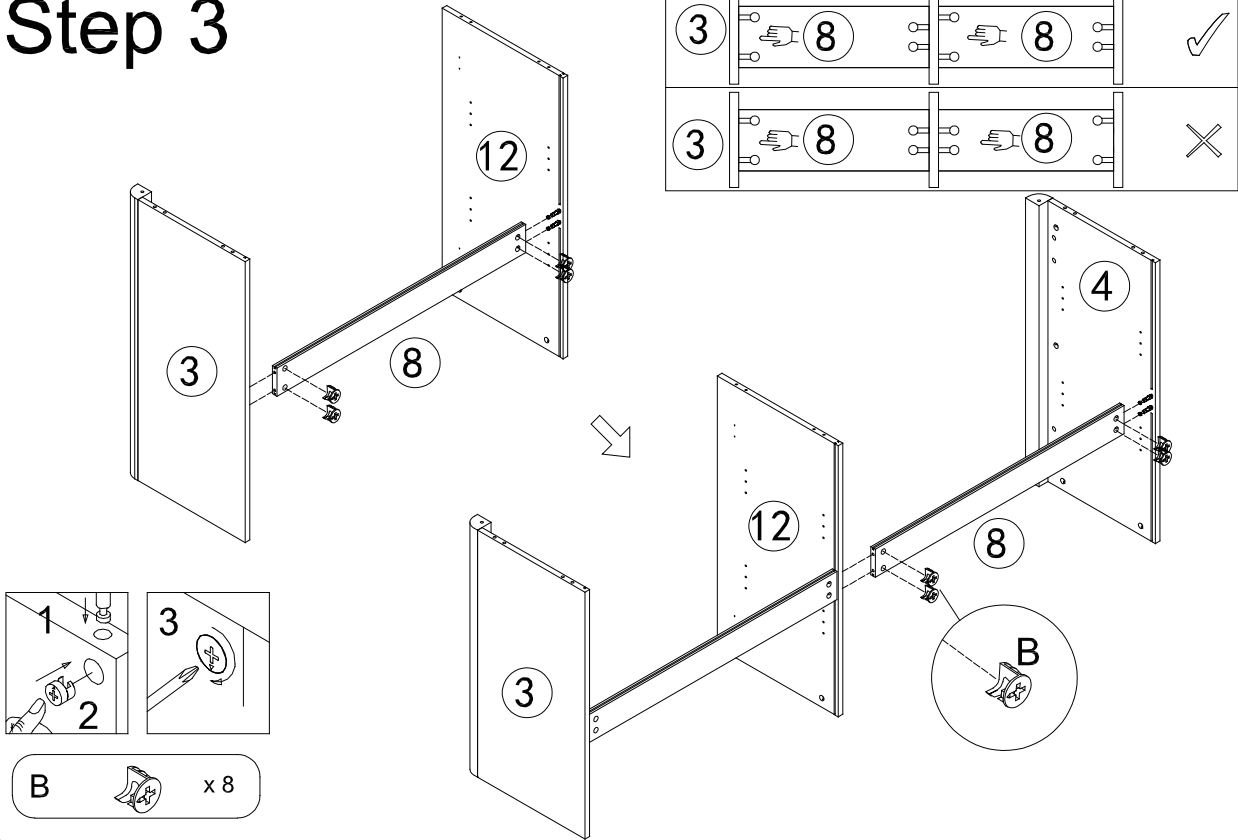
Step 2



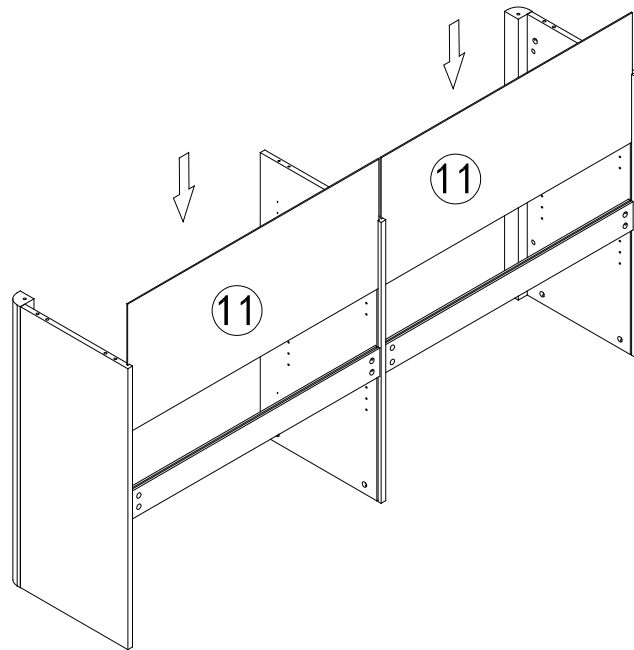
B  x 6

A  x 4

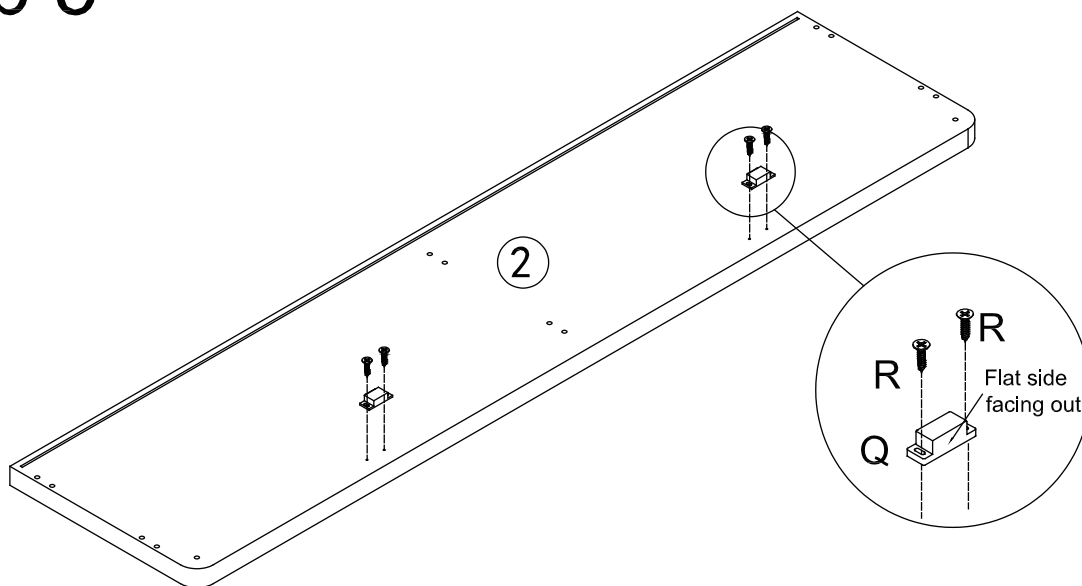
Step 3



Step 4



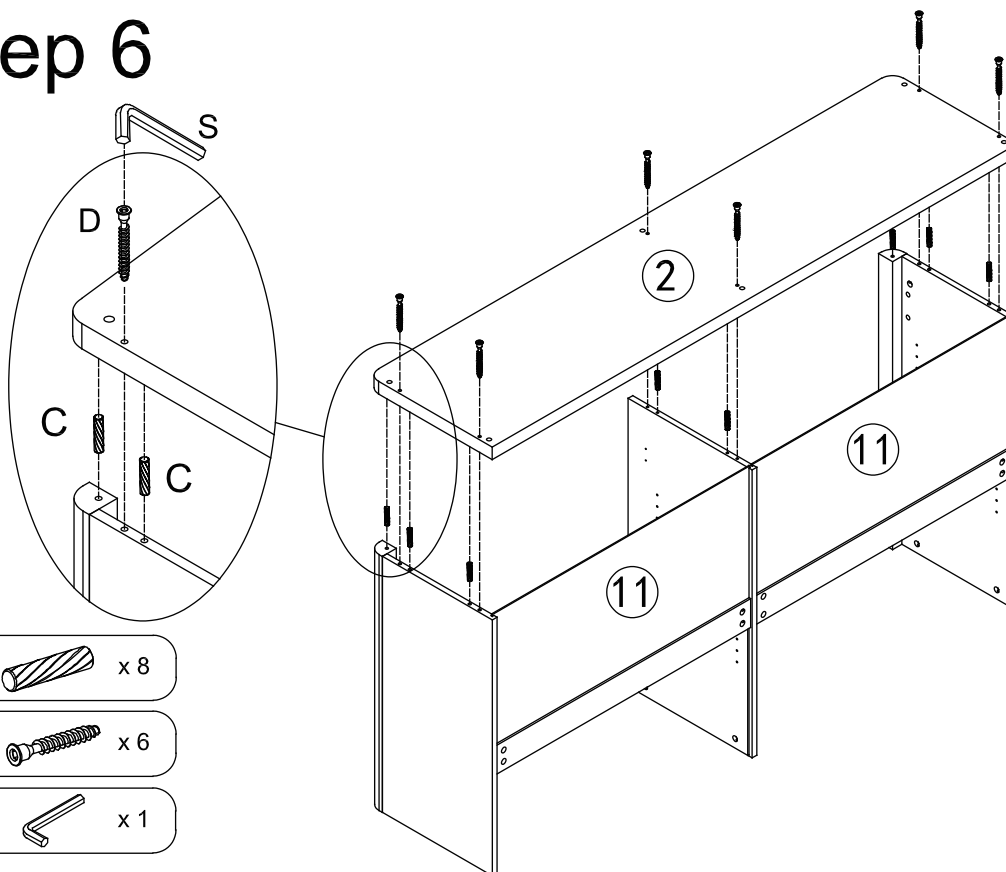
Step 5




Q  x 2

R  x 4

Step 6

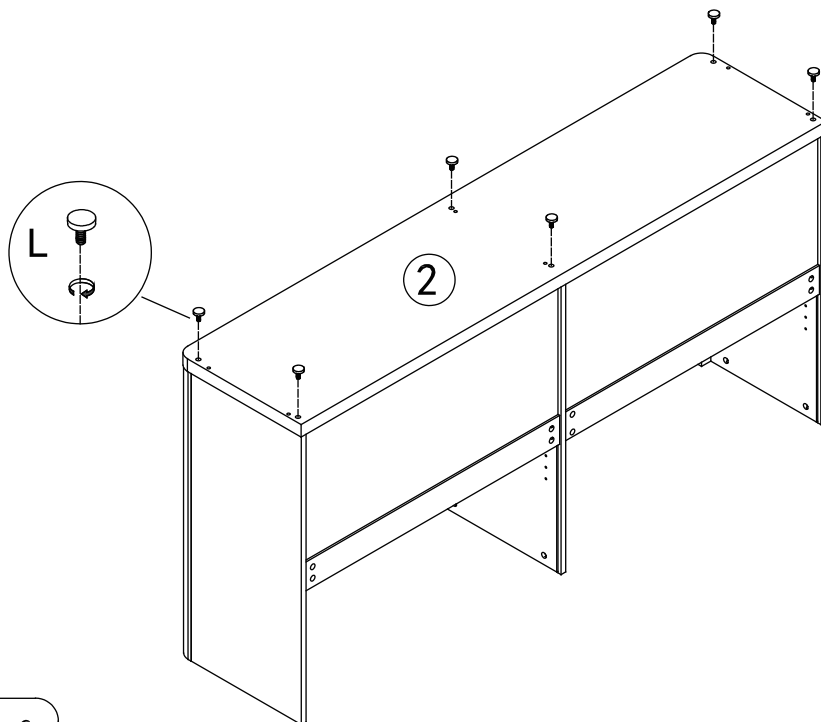



C  x 8

D  x 6

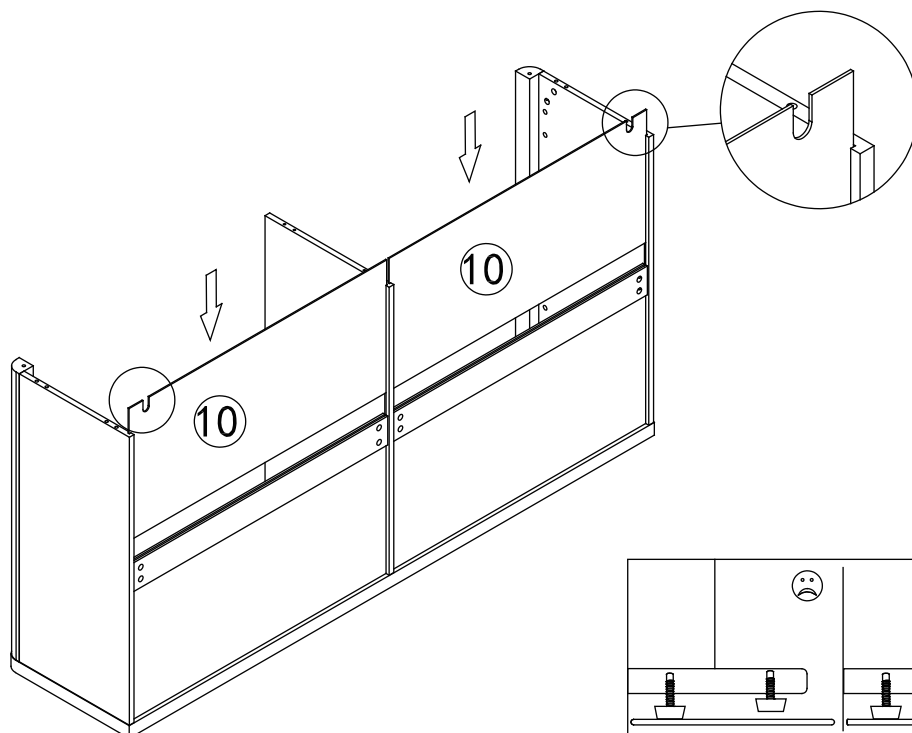
S  x 1

Step 7

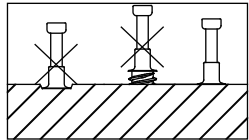







L  x 6

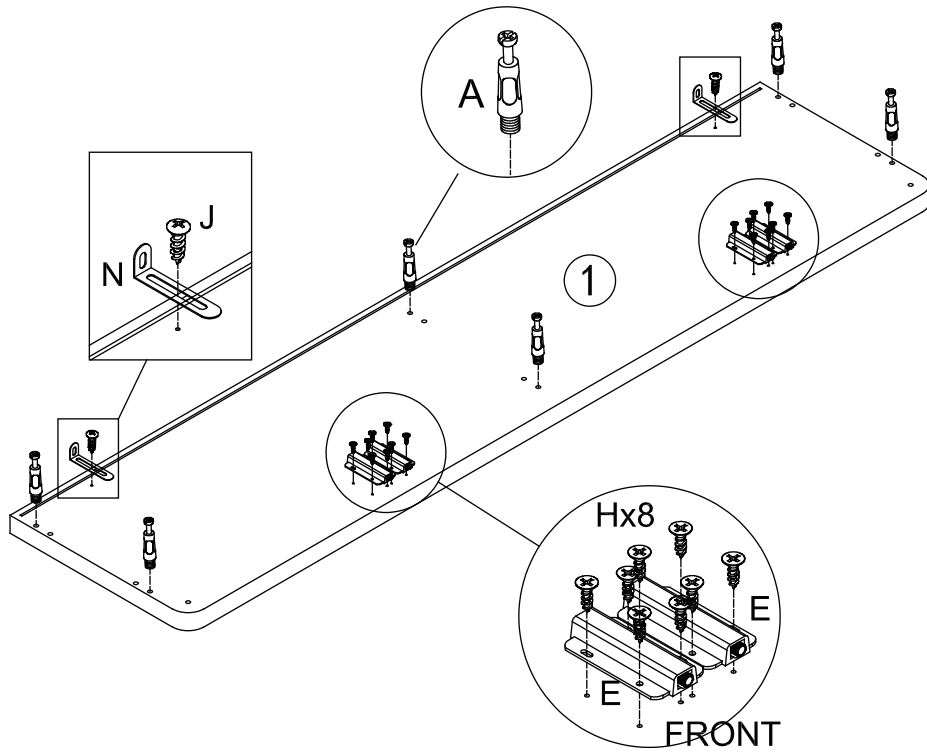
Step 8



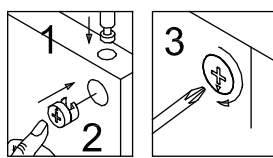
Step 9





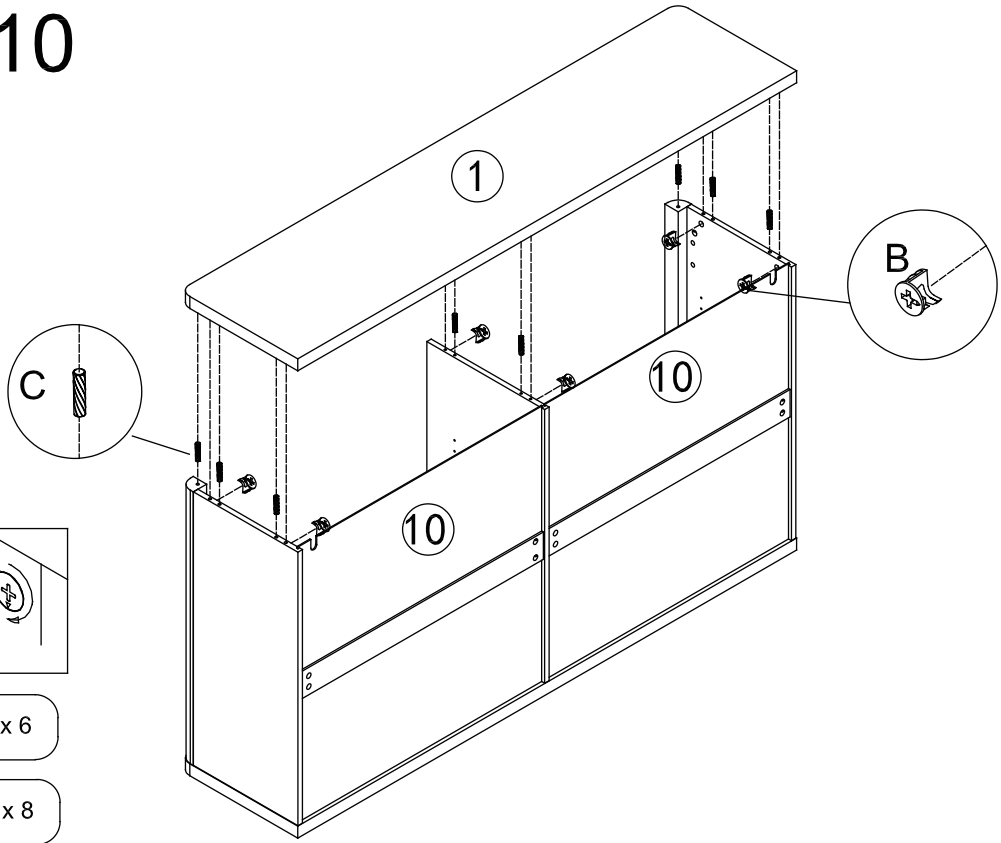
- A  x 6
- E  x 4
- N  x 2
- H  x 16
- J  x 2



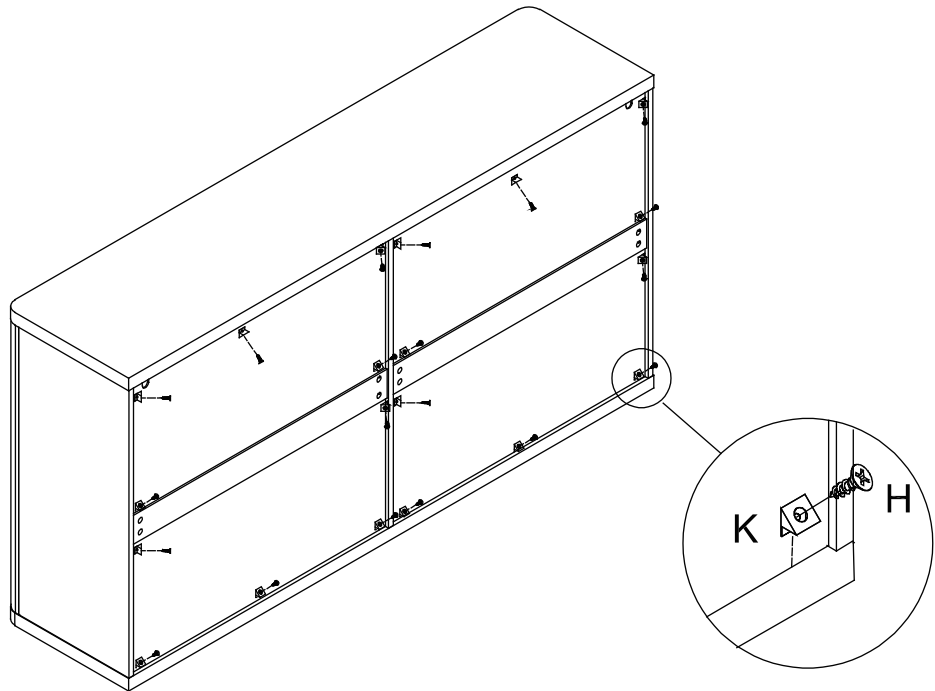
Step 10




- B  x 6
- C  x 8



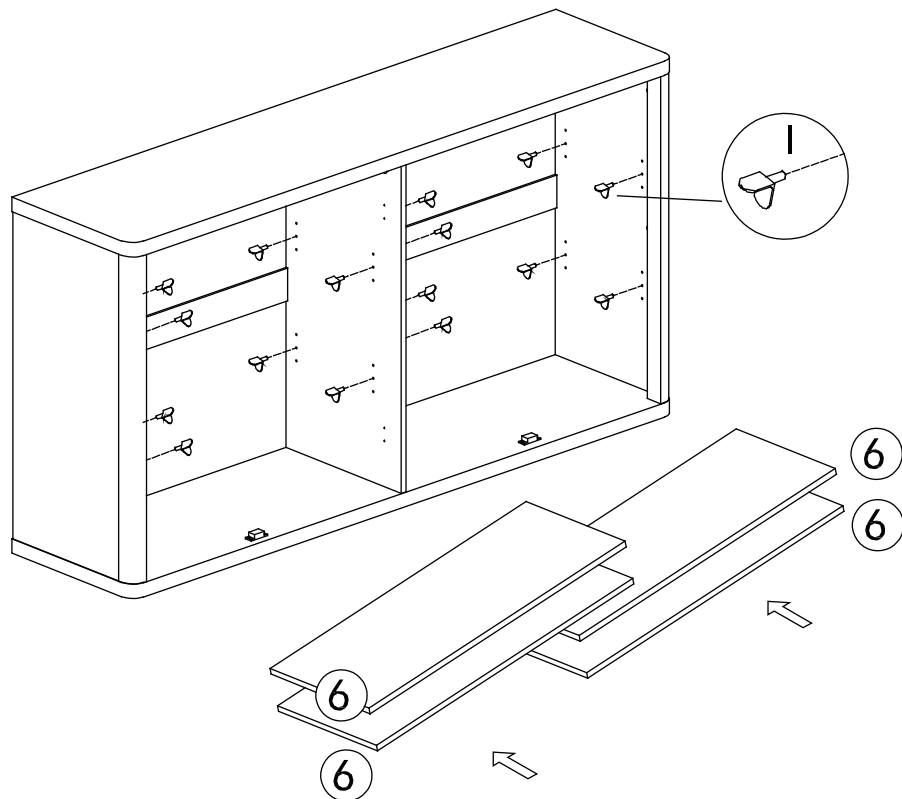
Step 11



H  x 20

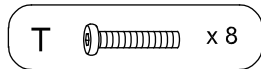
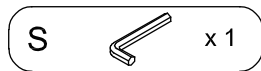
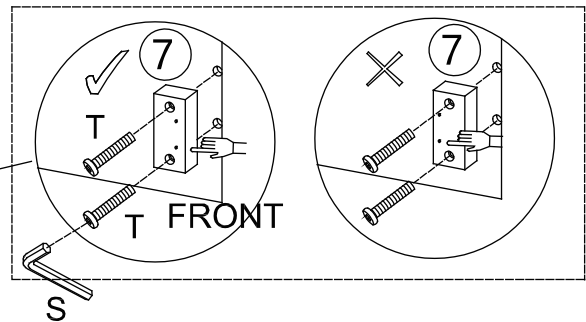
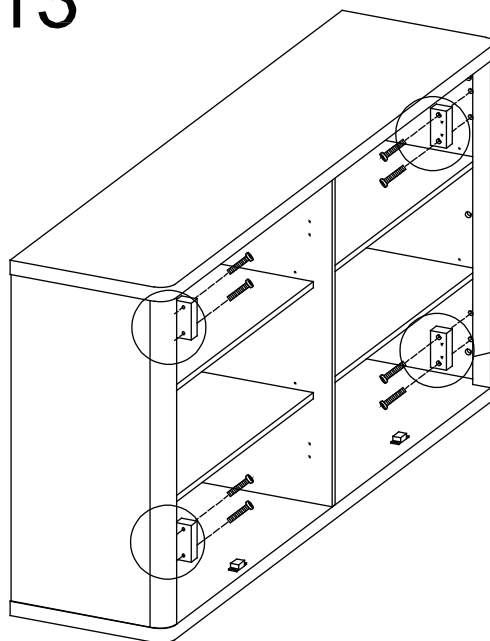
K  x 20

Step 12

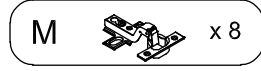
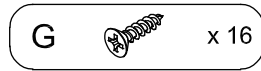
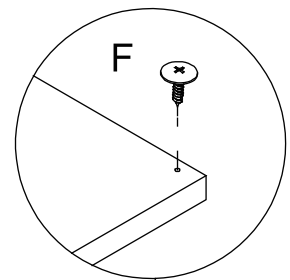
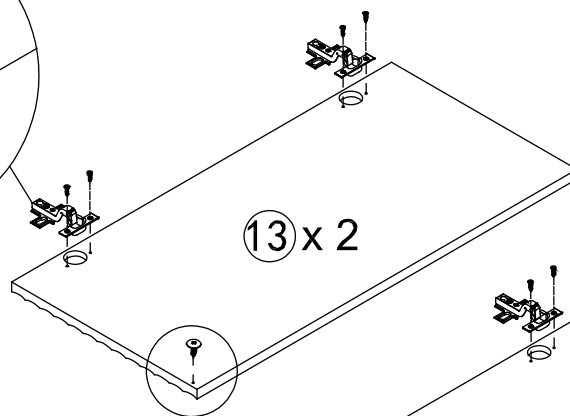
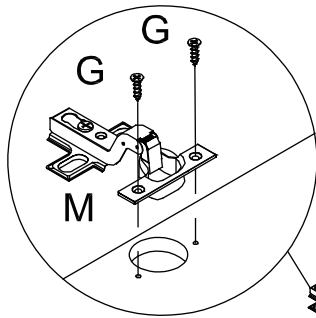


I  x 16

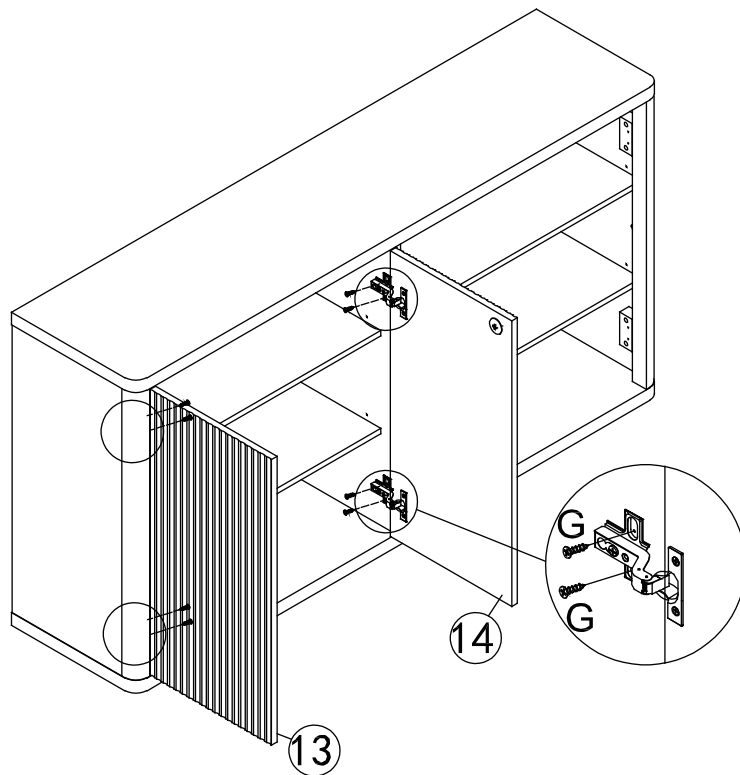
Step 13



Step 14



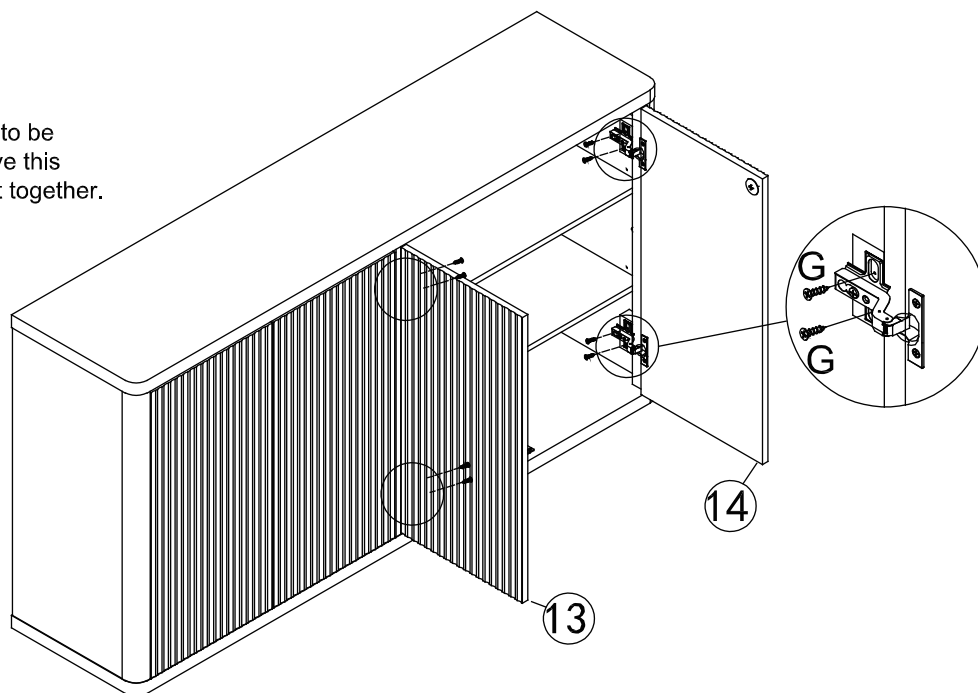
Step 15



G  x 8

Step 16

Tips: This item is not allowed to be dragged, if you need to move this item, two people need to lift it together.

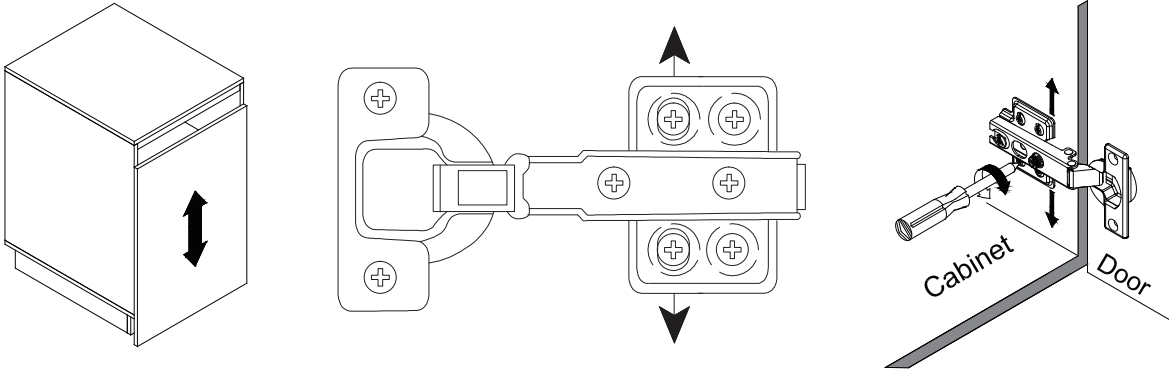


G  x 8

Cabinet Door Adjustment Instructions

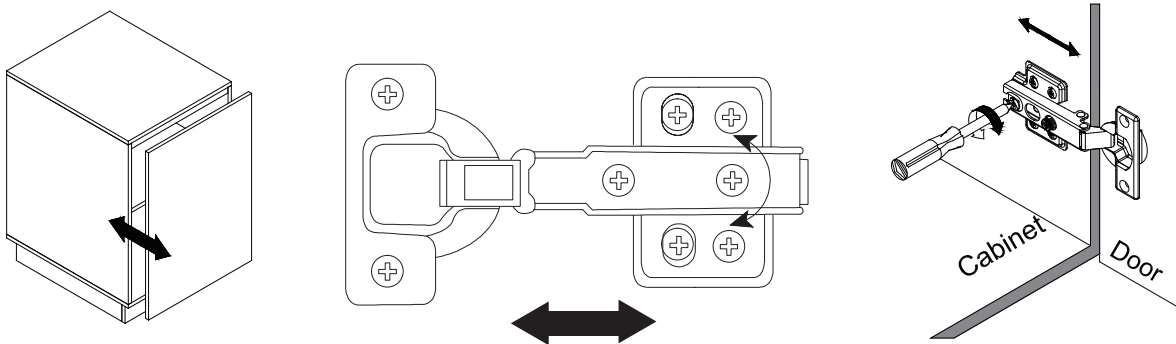
Height adjustment:

- Locate the height adjustment screws on the hinge.
- Use the Phillips screwdriver to either tighten or loosen the screws to raise or lower the cabinet door as desired.



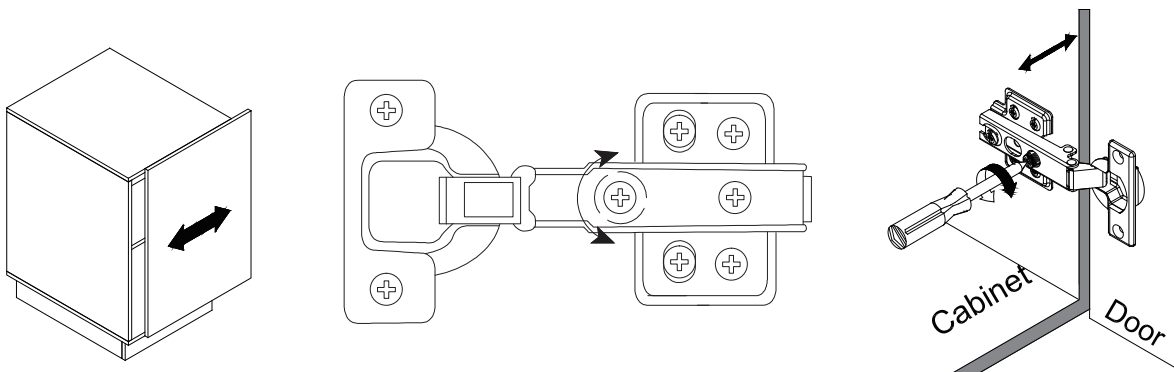
Side-to-side adjustment:

- If the cabinet door needs to be moved closer to or away from the cabinet frame, locate the side-to-side adjustment screws on the hinge.
- Use the Phillips screwdriver to adjust these screws and gradually move the door in the desired direction.

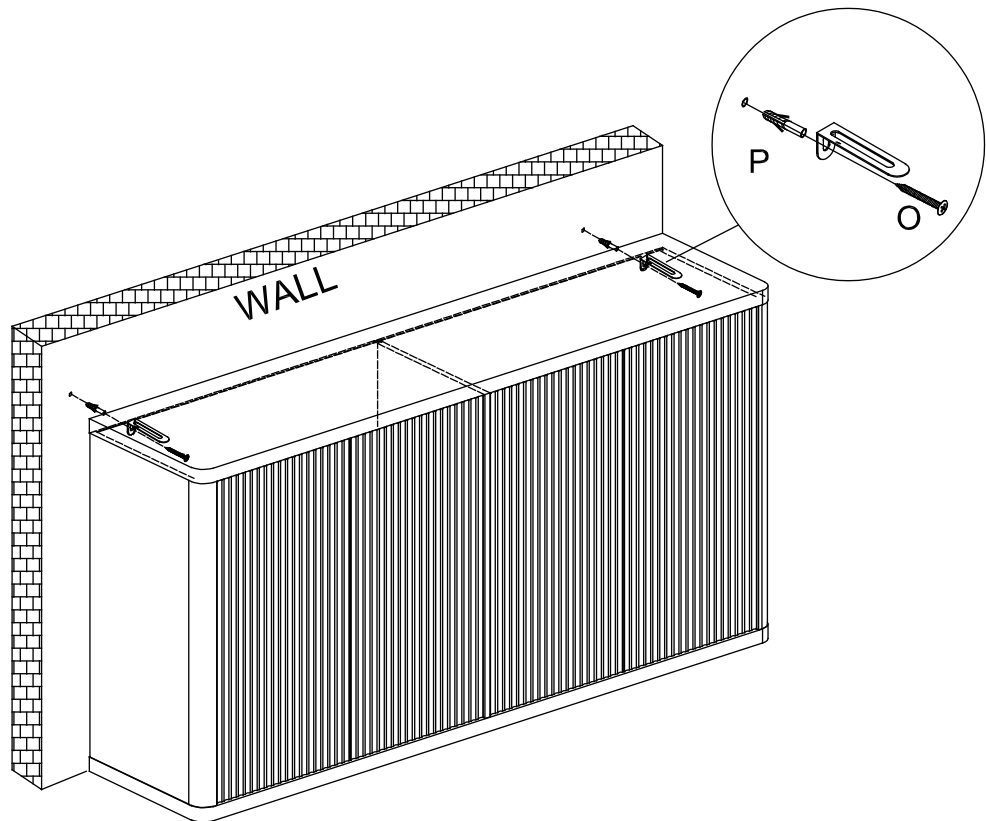
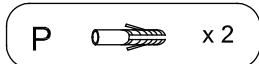
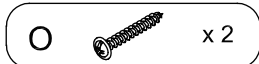
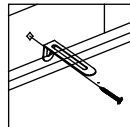
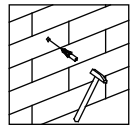
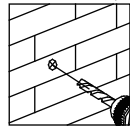
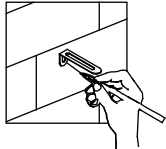


Depth adjustment (if applicable):

- Check if the cabinet door needs to be brought closer to or further away from the cabinet frame.
- For depth adjustment, locate the depth adjustment screws on the hinge.
- Use the Phillips screwdriver to turn these screws clockwise or counterclockwise accordingly.



Step 17



Step 18

