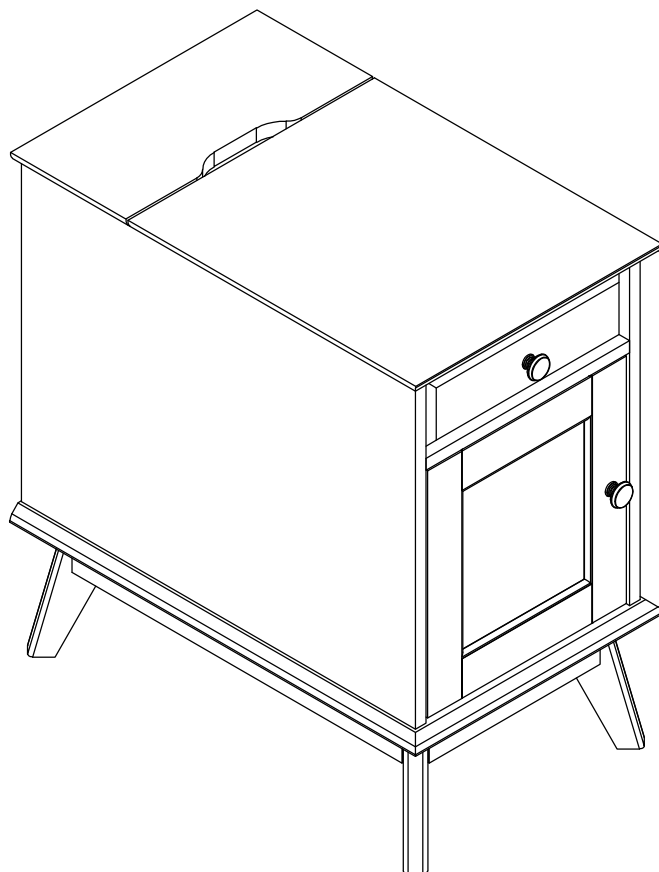


End Table with USB Ports & Outlets



ASSEMBLY INSTRUCTIONS

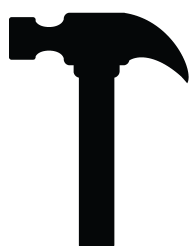
Table of Contents

Part Identification	2
Hardware Identification	3-4
Assembly Steps	5-23
Safety	24-26
Warranty	27-29

Assembly Tools Required



No. 2 Phillips Screwdriver
and Flat head screwdriver
Shown Actual Size



Hammer
Not actual size

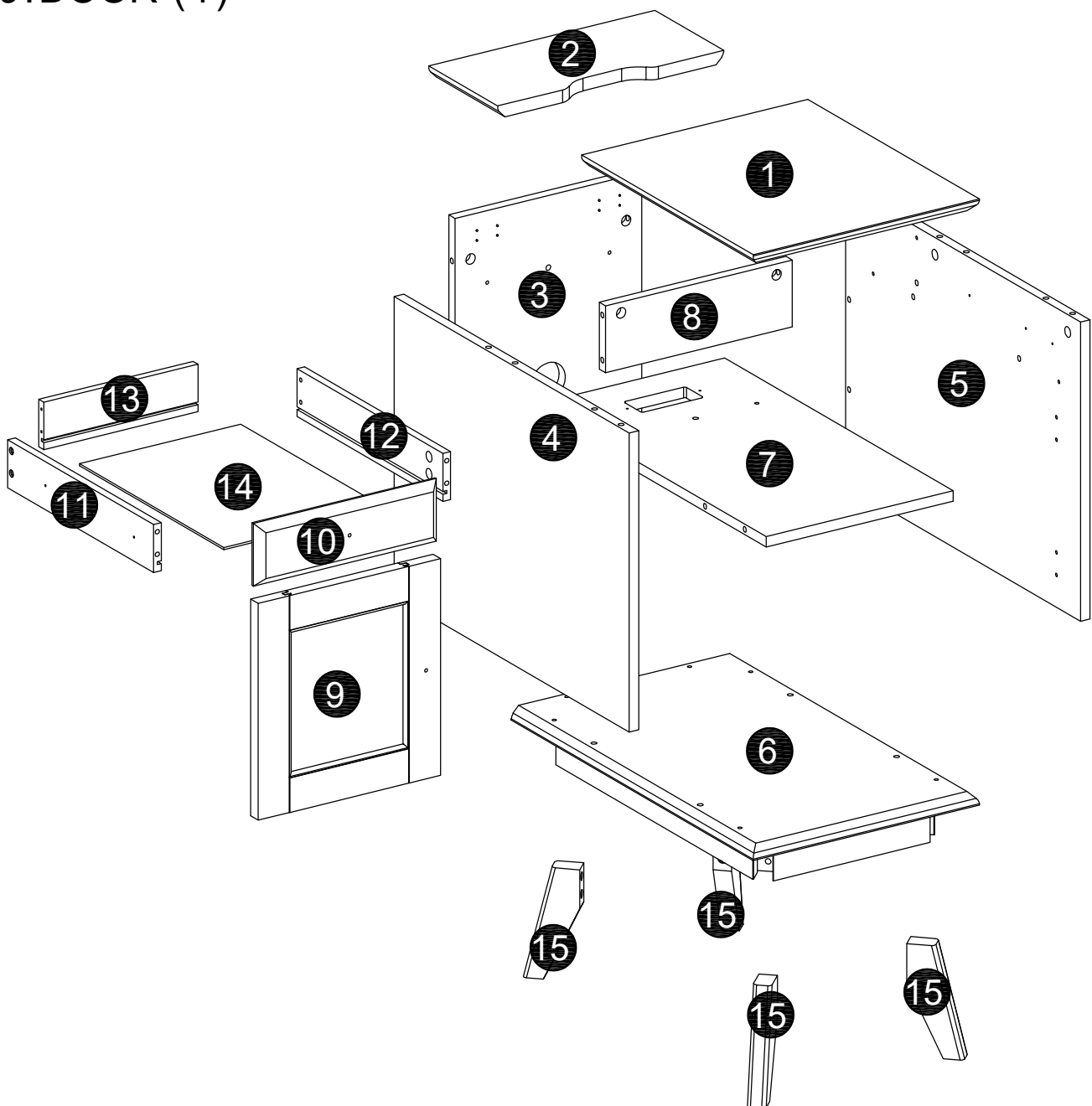


DO NOT USE

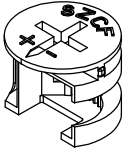
Skip the power trip.
This time.

Part Identification

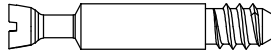
- | | |
|----------------------|--------------------------|
| 1.FRONT DESK TOP (1) | 10. DRAWER FRONT (1) |
| 2.REAR DESK TOP (1) | 11.LEFT DRAWER SIDE (1) |
| 3.BACK (1) | 12.RIGHT DRAWER SIDE (1) |
| 4.LEFT END (1) | 13.DRAWER BACK (1) |
| 5.RIGHT END (1) | 14.DRAWER BOTTOM (1) |
| 6.BOTTOM (1) | 15.LEG (4) |
| 7.SHELF (1) | |
| 8.DIVISION (1) | |
| 9.DOOR (1) | |



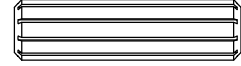
Hardware Identification



A. HIDDEN CAM - 16+1



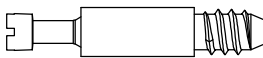
B. CAM SCREW - 16+1



C. WOOD DOWEL - 21+1



D. SMALL HIDDEN CAM - 4+1



E. SMALL CAM SCREW - 4+1



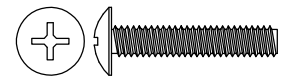
F. 1-1/2" FLAT HEAD SCREW - 12+1



G. 1/2" PAN HEAD SCREW - 2+1



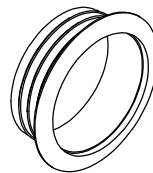
H. 1/2" FLAT HEAD SCREW
(WHITE) - 16+1



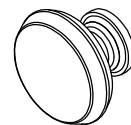
I. 7/8" MACHINE SCREW - 2+1



J. 1-3/4" MACHINE SCREW - 8+1

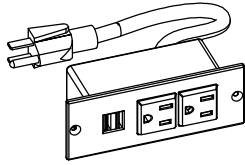


K. GROMMET - 1

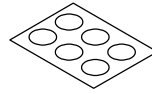


L. PULL - 2

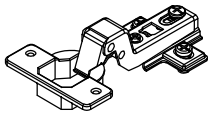
Hardware Identification



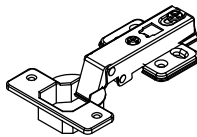
M. USB PORTS & OUTLETS- 1



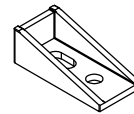
N.APPLIQUE CARD - 3



O.HINGE - 2



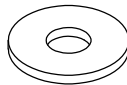
P.HINGE - 2



Q.DOOR STOP - 1



R.LOCK WASHER - 8



S.WASHER - 8



T.WRENCH - 1



U. 1/2"FLAT HEAD SCREW
(BLACK) - 2+1



V. FELT FEET - 4

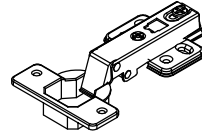
STEP 1



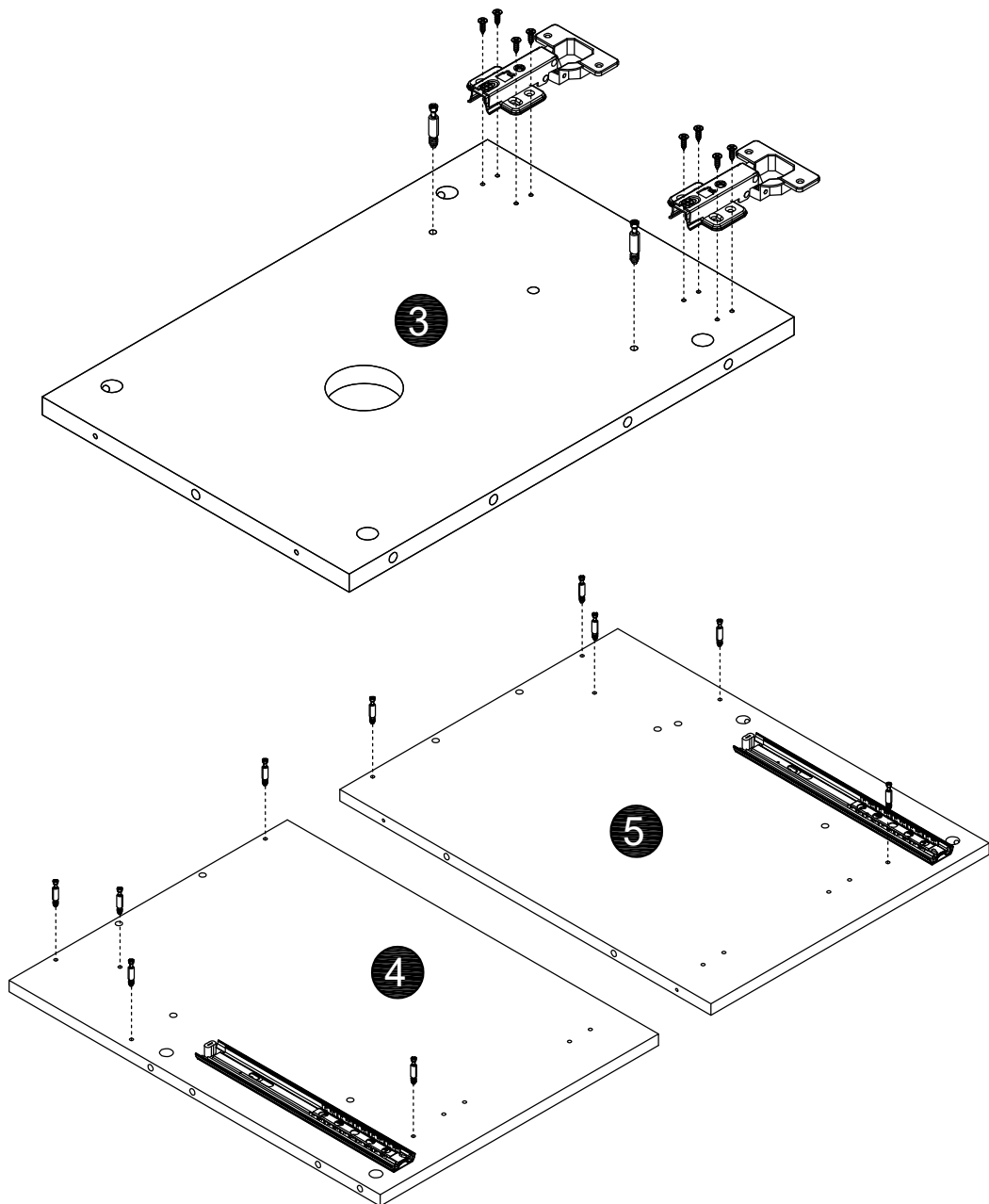
B.CAM SCREW - 12



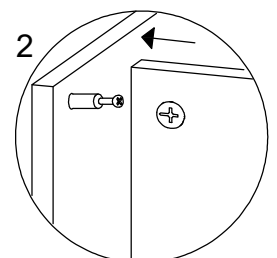
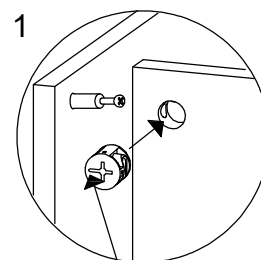
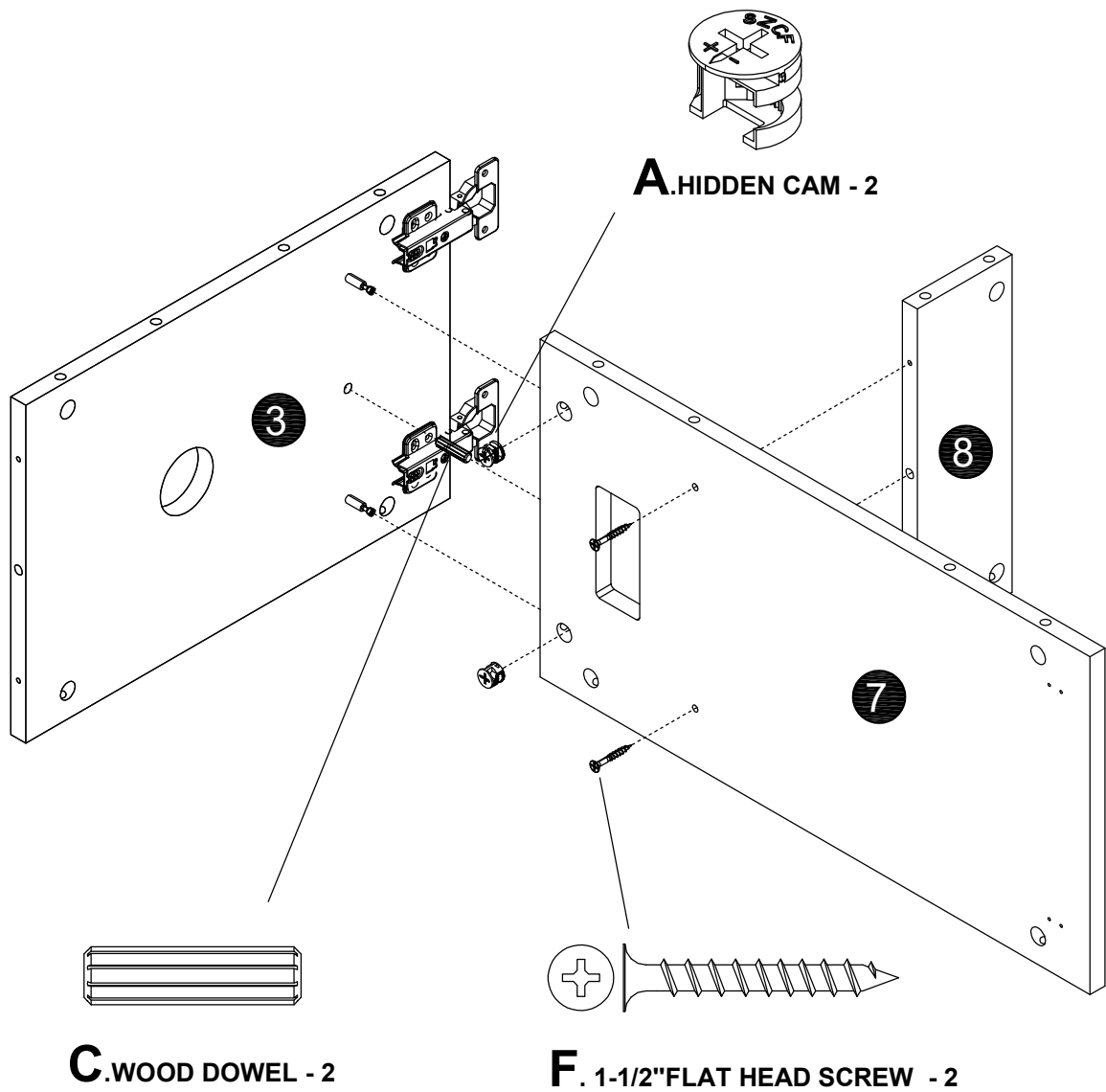
H. 1/2"FLAT HEAD SCREW
(WHITE) - 8



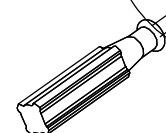
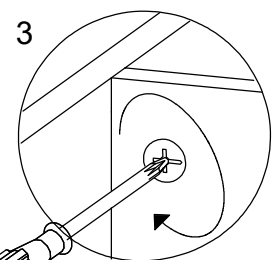
P.HINGE - 2



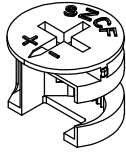
STEP 2



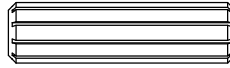
The arrow must point toward the edge of the board.



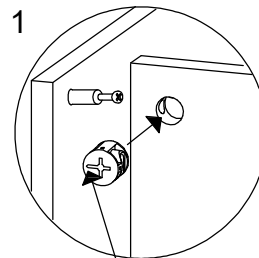
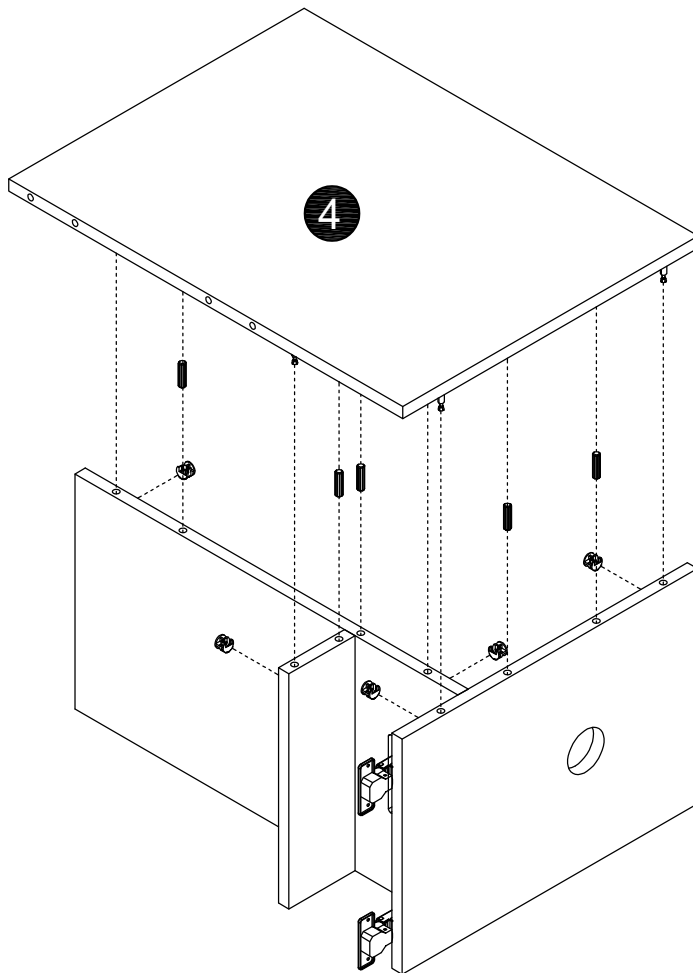
STEP 3



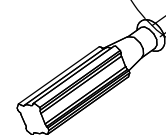
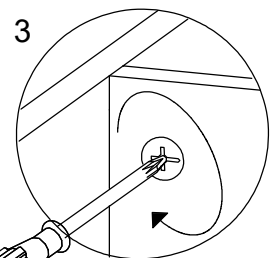
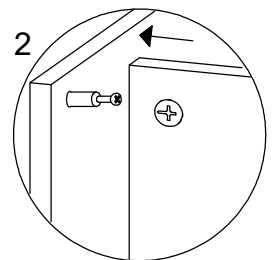
A.HIDDEN CAM - 5



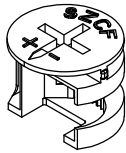
C.WOOD DOWEL - 5



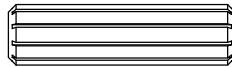
The arrow must point toward the edge of the board.



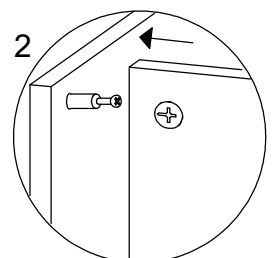
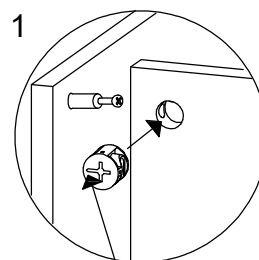
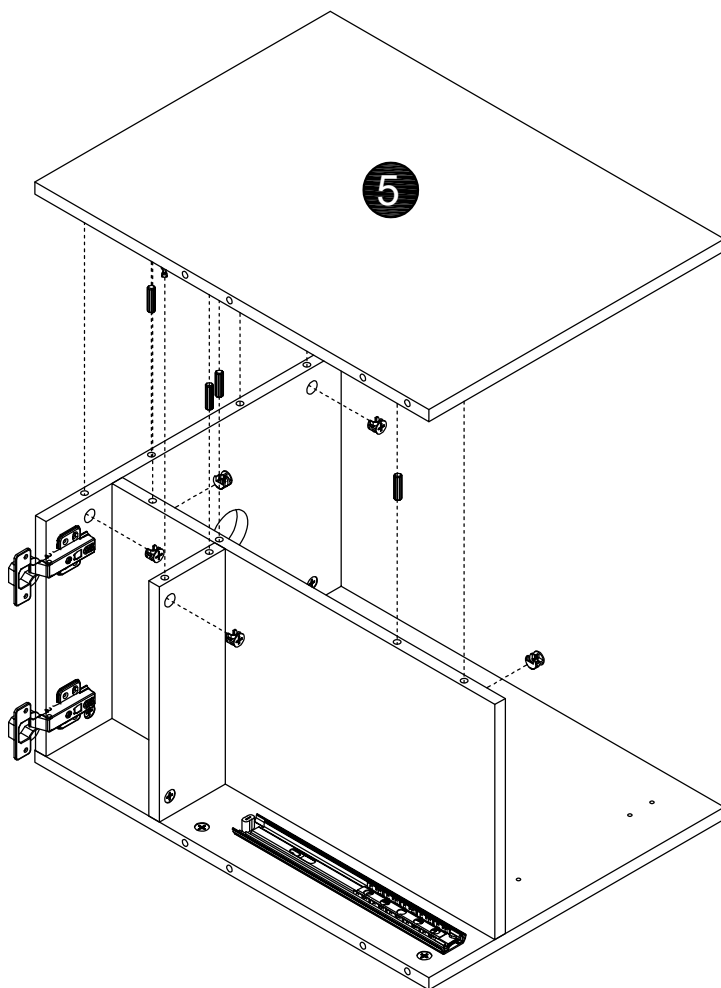
STEP 4



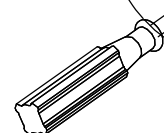
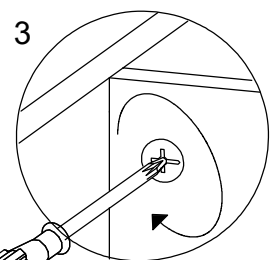
A.HIDDEN CAM - 5



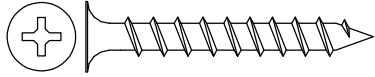
C.WOOD DOWEL - 5



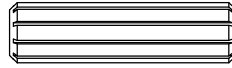
The arrow must point toward the edge of the board.



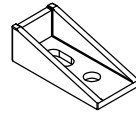
STEP 5



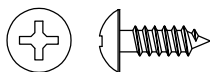
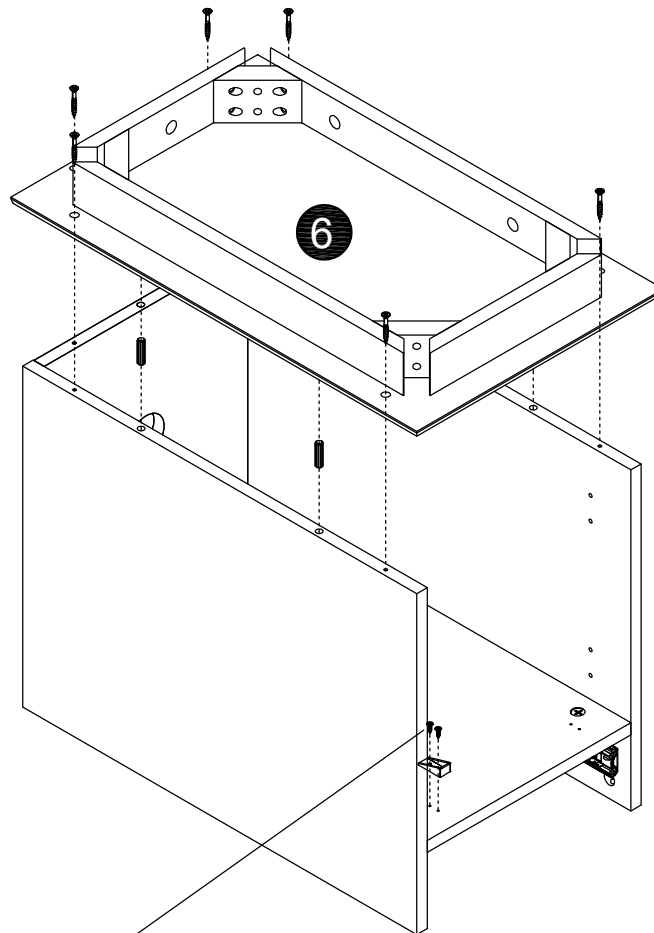
F. 1-1/2" FLAT HEAD SCREW - 6



C. WOOD DOWEL - 5

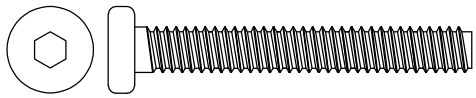


Q. DOOR STOP - 1



G. 1/2" PAN HEAD SCREW - 2

STEP 6



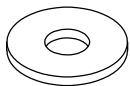
J. 1-3/4" MACHINE SCREW - 8+1



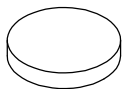
T. WRENCH - 1



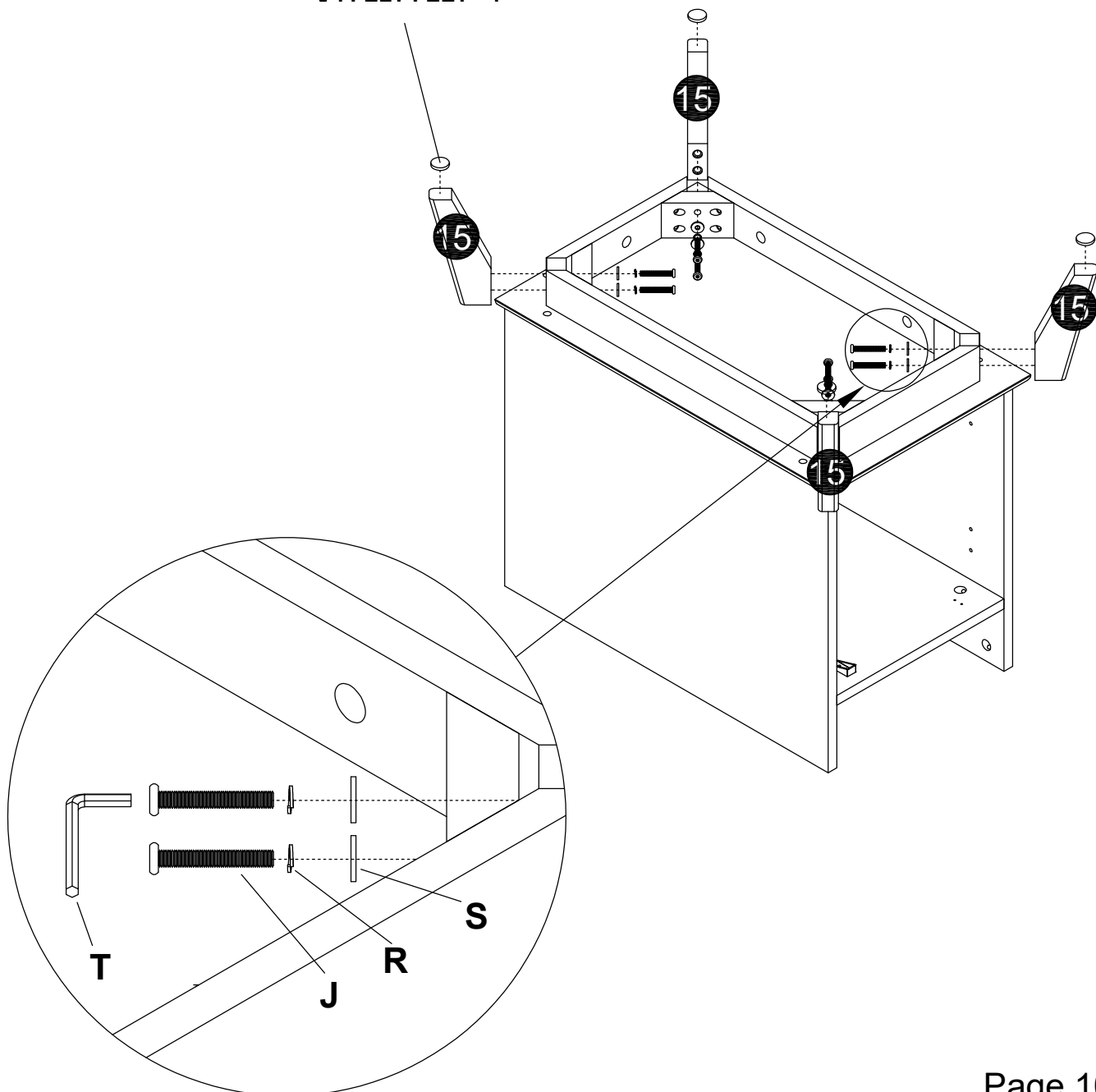
R. LOCK WASHER - 8



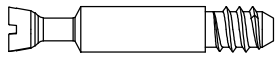
S. WASHER - 8



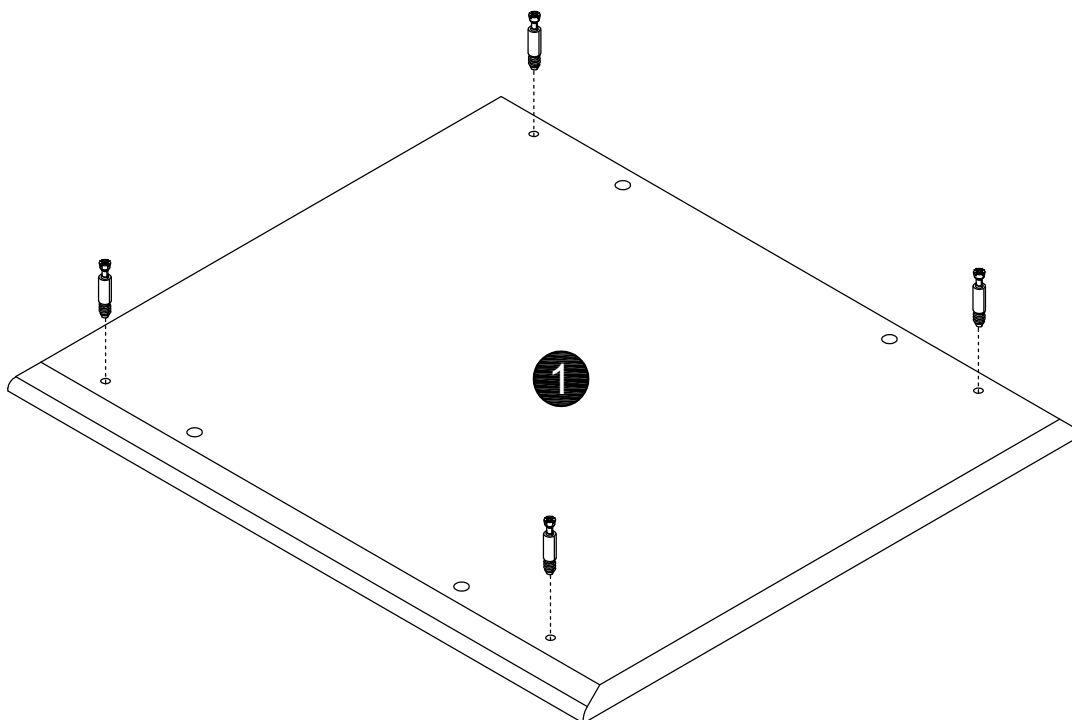
V. FELT FEET - 4



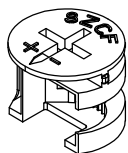
STEP 7



B.CAM SCREW - 4



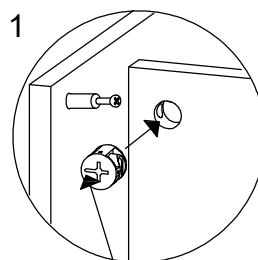
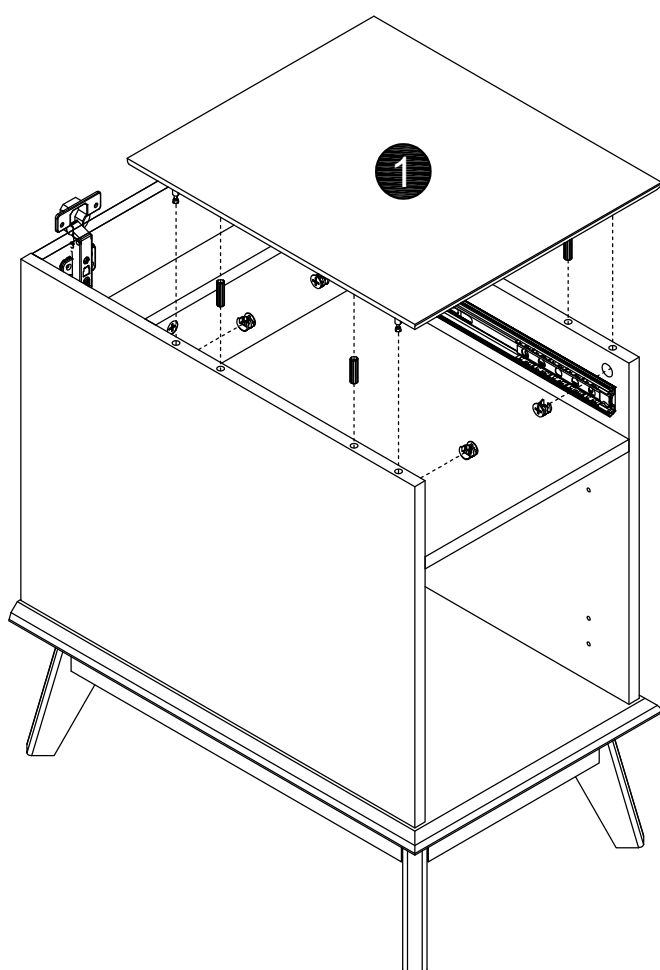
STEP 8



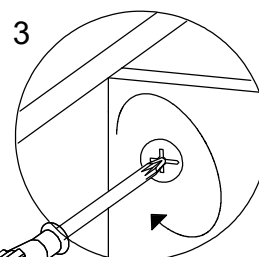
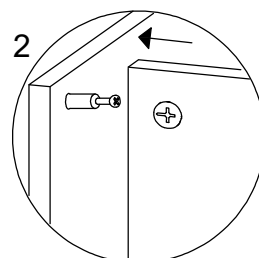
A.HIDDEN CAM - 4



C.WOOD DOWEL - 4



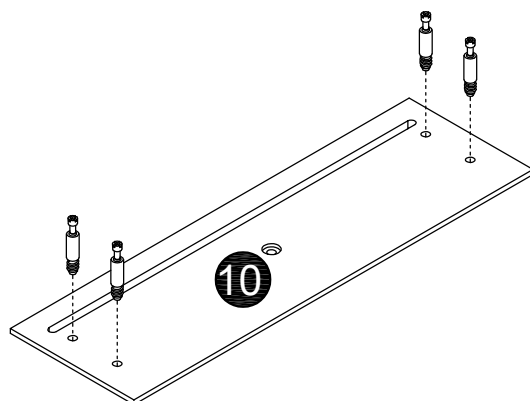
The arrow must point toward the edge of the board.



STEP 9



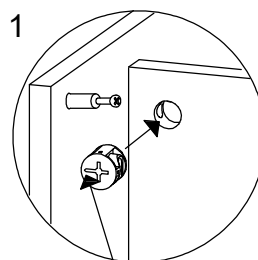
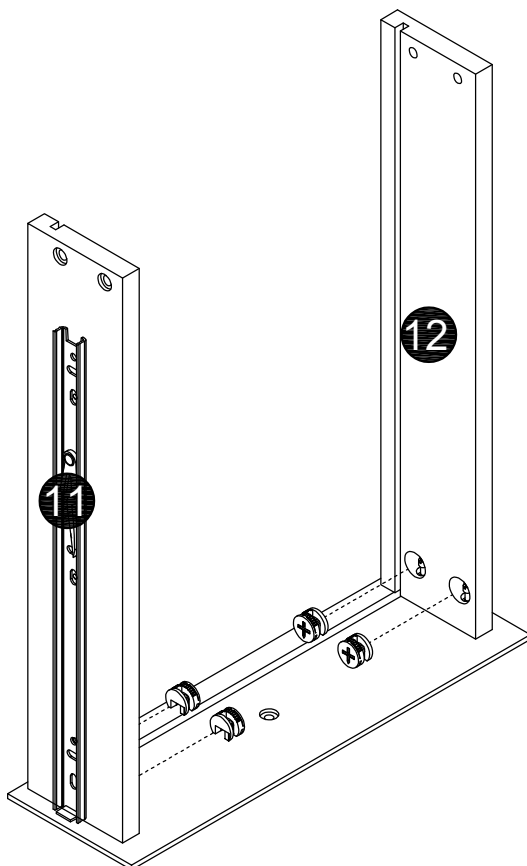
E.SMALL CAM SCREW - 4



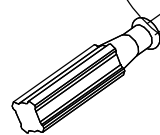
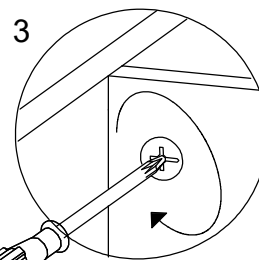
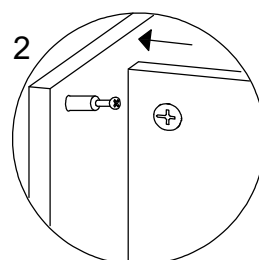
STEP 10



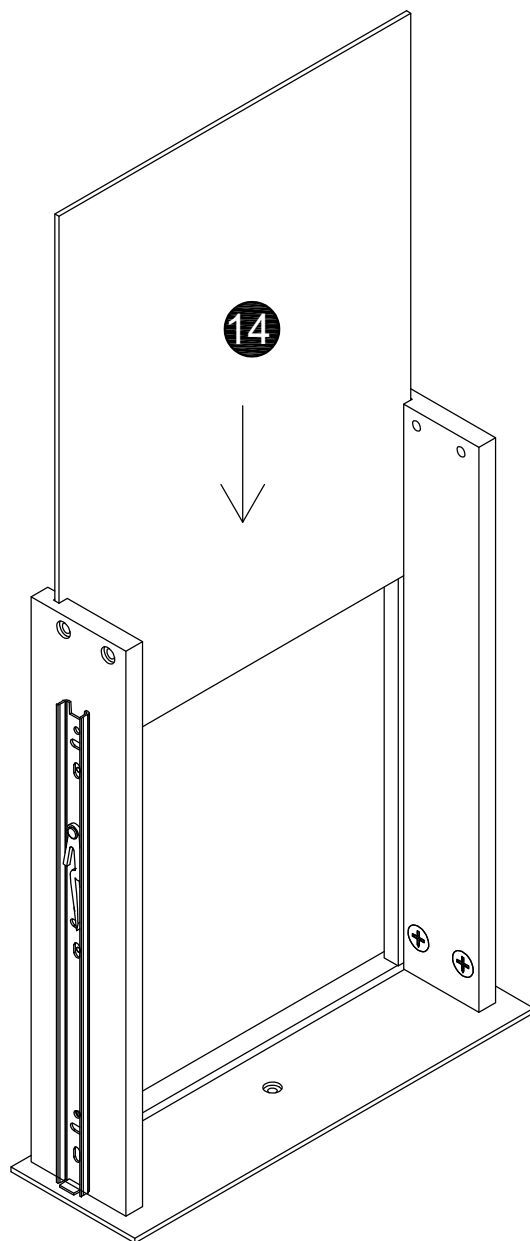
D. SMALL HIDDEN CAM - 4



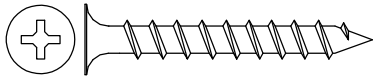
The arrow must point toward the edge of the board.



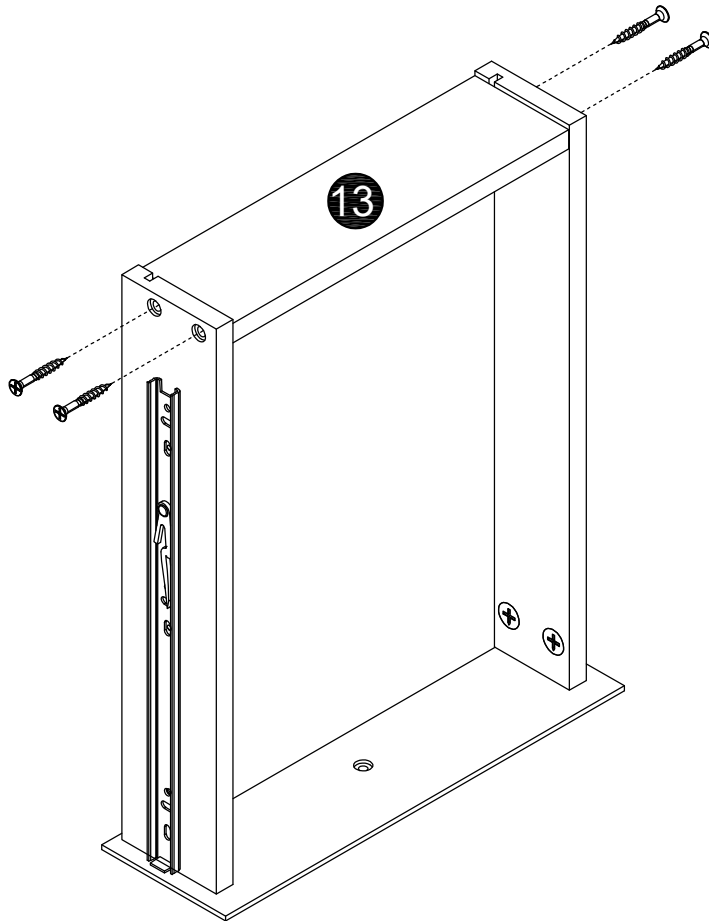
STEP 11



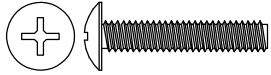
STEP 12



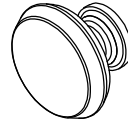
F. 1-1/2"FLAT HEAD SCREW - 4



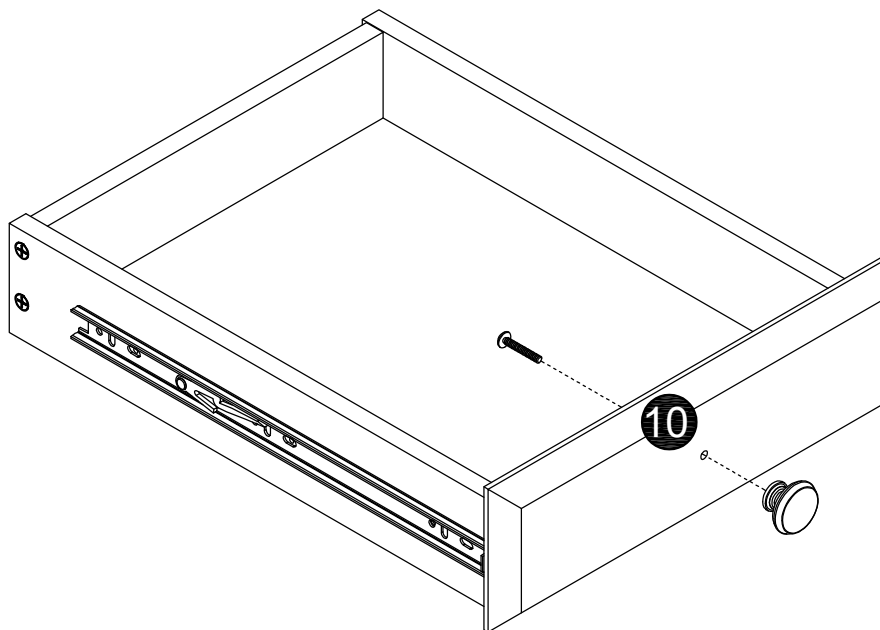
STEP 13



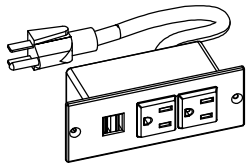
I. 7/8" MACHINE SCREW - 1



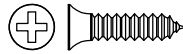
L. PULL - 1



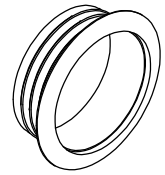
STEP 14



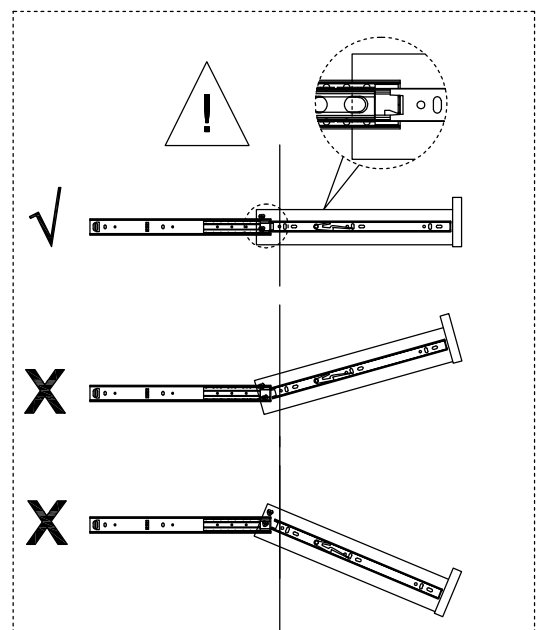
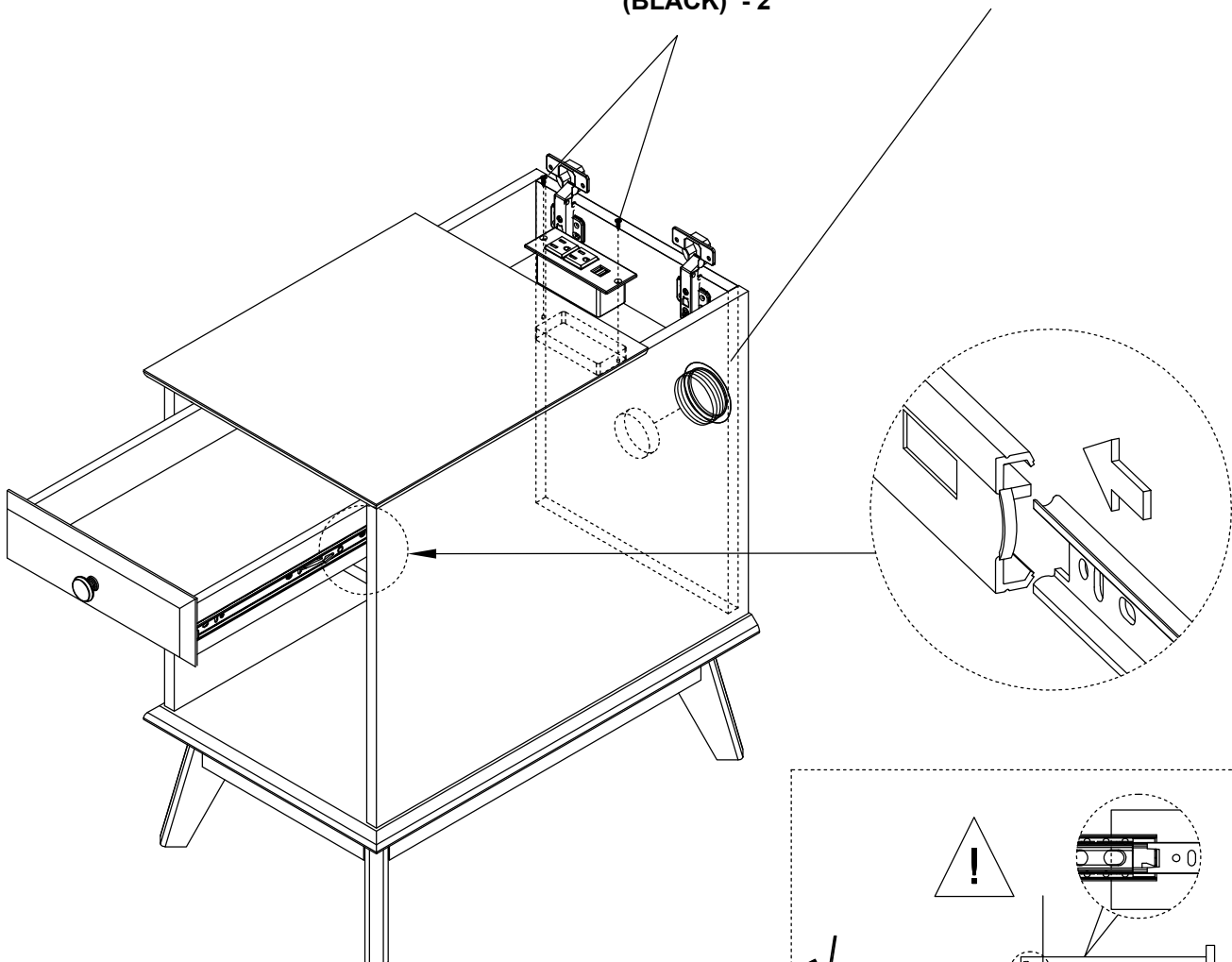
M. USB PORTS & OUTLETS- 1



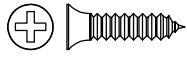
U. 1/2" FLAT HEAD SCREW
(BLACK) - 2



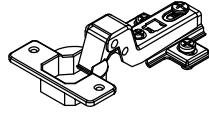
K. GROMMET- 1



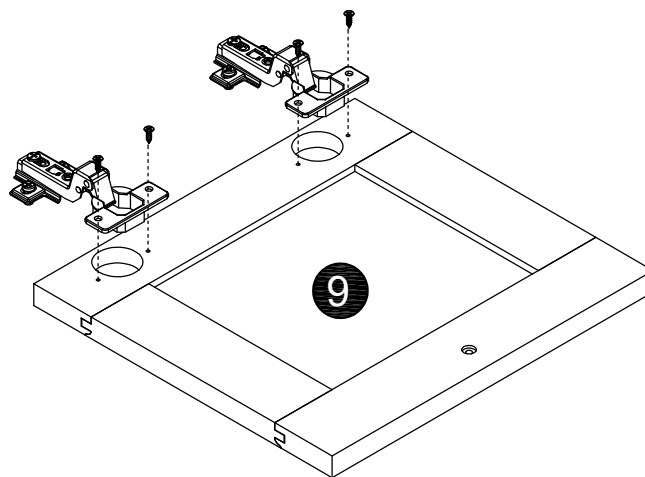
STEP 15



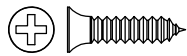
H. 1/2" FLAT HEAD SCREW
(WHITE) - 4



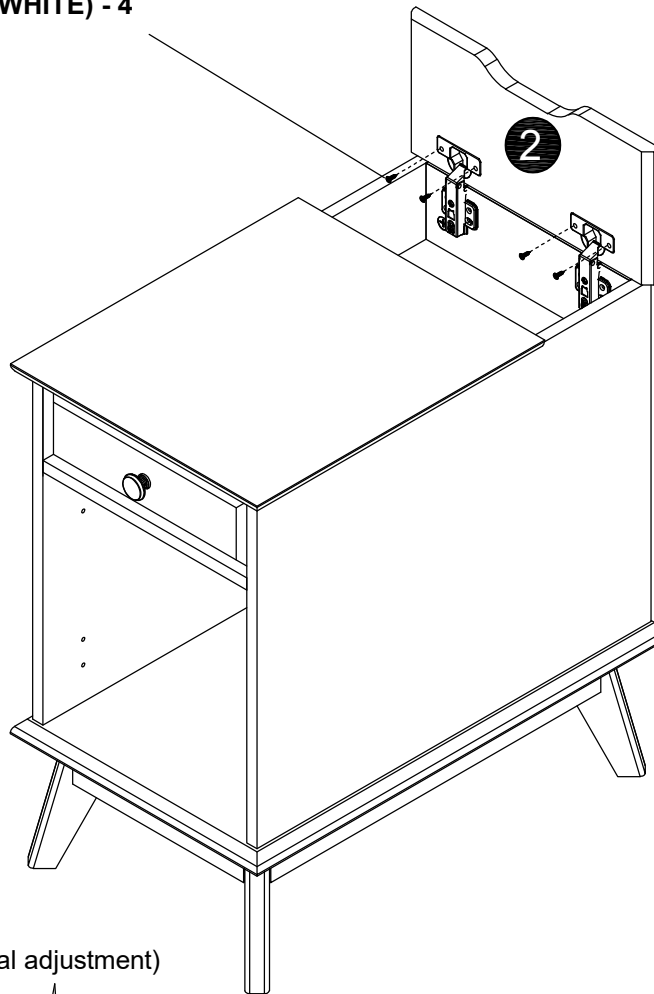
O. HINGE - 2



STEP 16



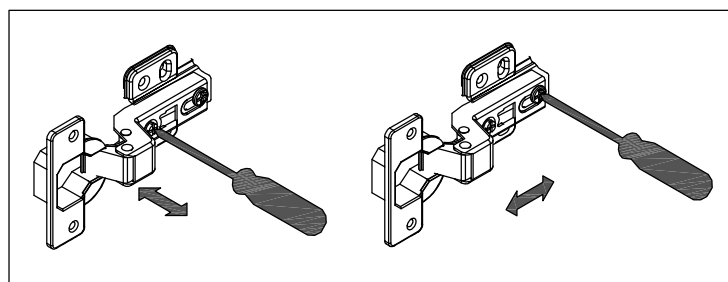
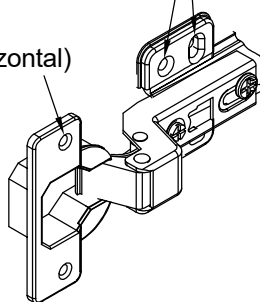
H. 1/2" FLAT HEAD SCREW
(WHITE) - 4



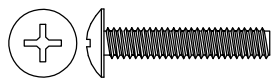
(vertical adjustment)

Adjusting screw (horizontal)

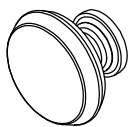
Mounting screw (depth)



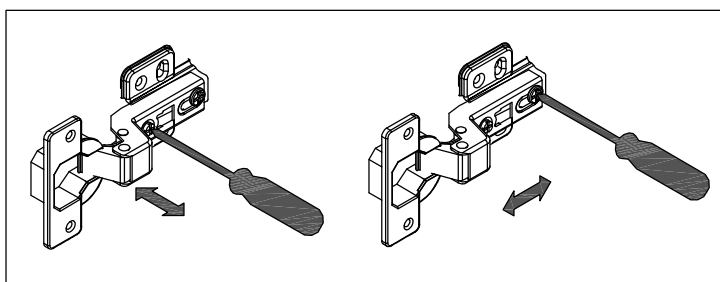
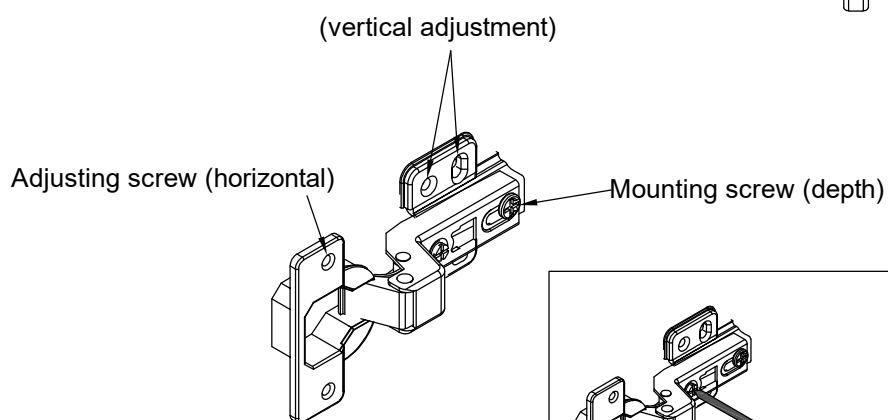
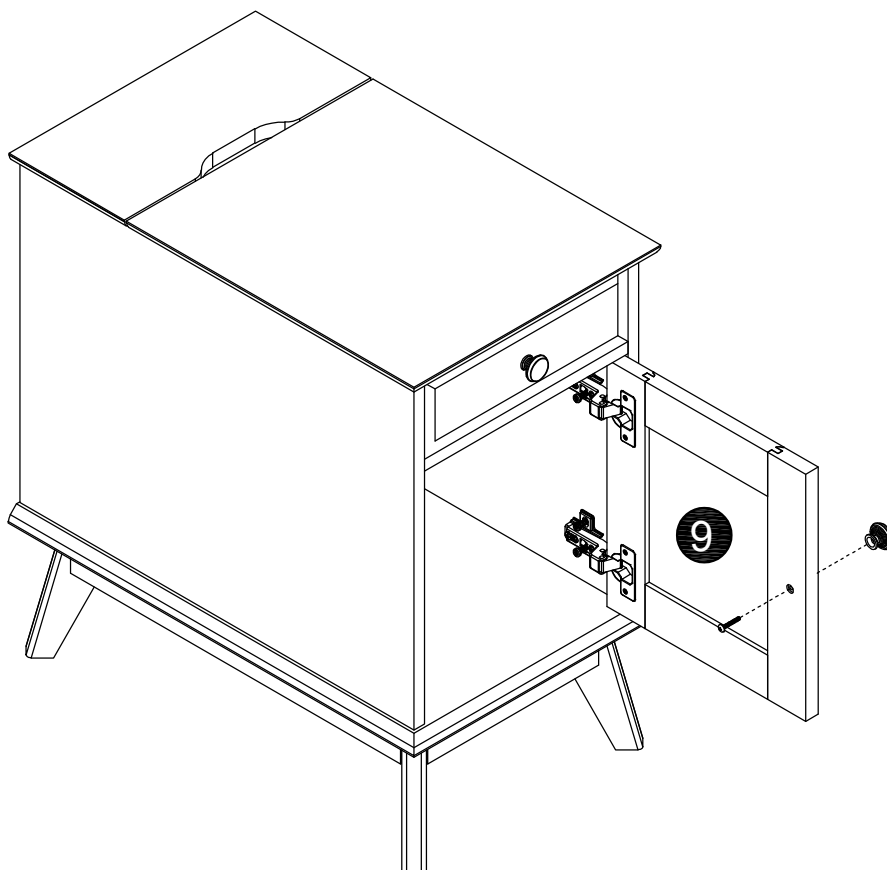
STEP 17 The door can be installed RIGHT side.



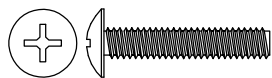
I. 7/8" MACHINE SCREW - 1



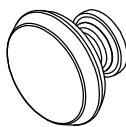
L. PULL - 1



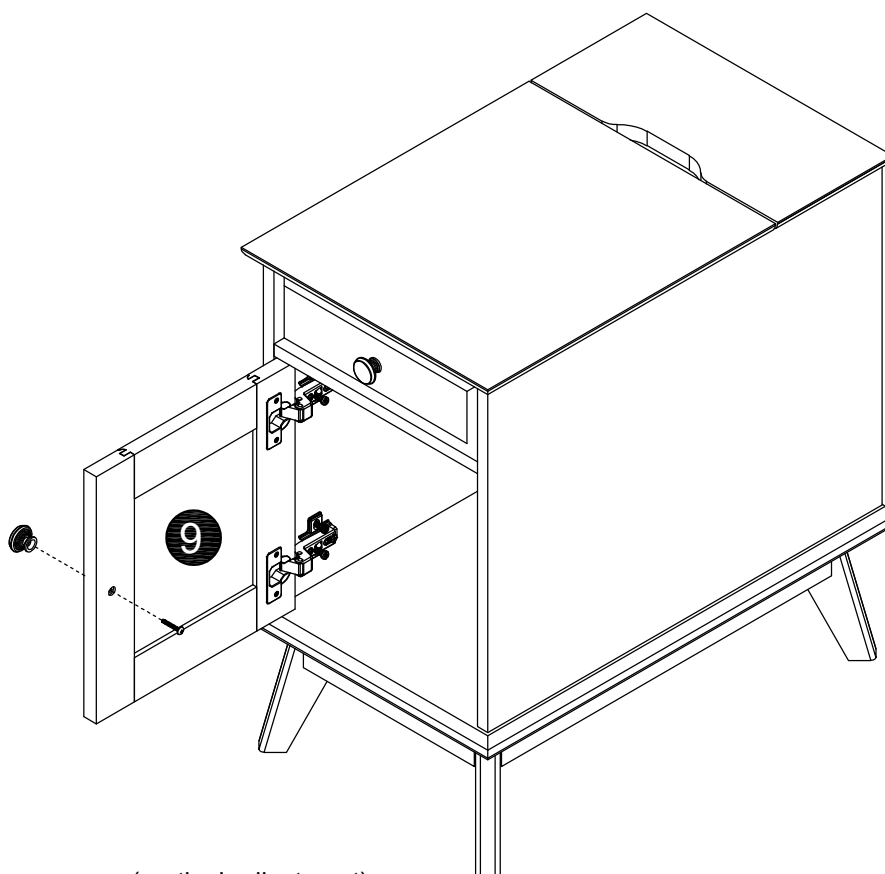
STEP 18 The door can be installed LEFT side.



I. 7/8" MACHINE SCREW - 1



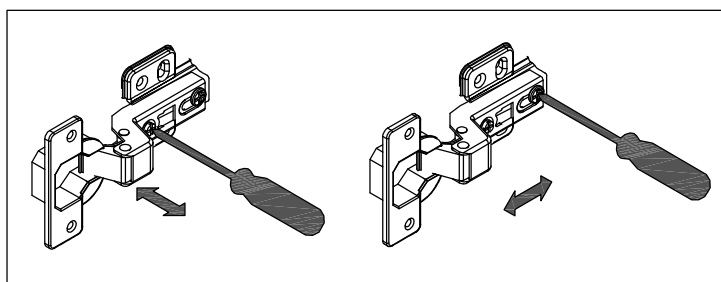
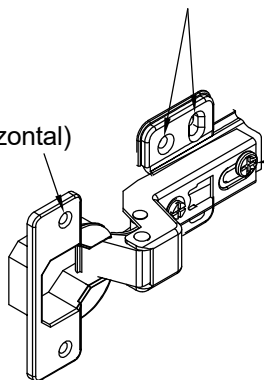
L.PULL - 1



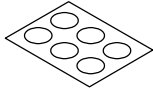
(vertical adjustment)

Adjusting screw (horizontal)

Mounting screw (depth)

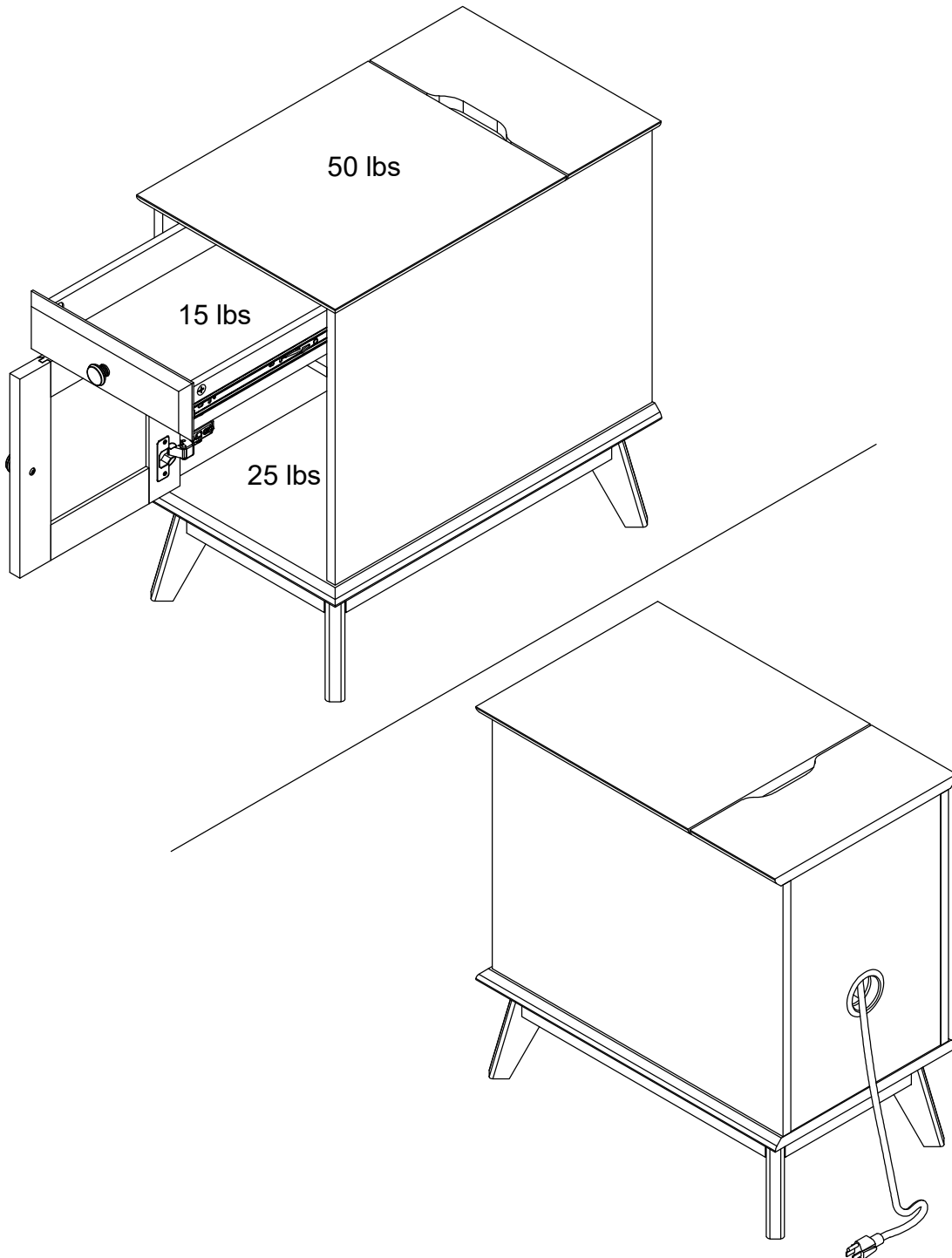


STEP 19



N.APPLIQUE CARD - 3

Peel a CAM COVER from the CAM COVER CARD (N) and stick one onto each visible HIDDEN CAM.





Warning

Please use your furniture correctly and safely. Improper use can cause safety hazards, or damage to your furniture or household items. Carefully read the following chart.

Death or serious injury may occur when children climb on audio and/or video equipment furniture. A remote control or toys placed on the furnishing may encourage a child to climb on the furnishing and as a result may tip over onto the child.

NEVER allow children to climb or play with the TV or furnishing supporting the TV.

NEVER place toys, food, remote, etc. on top of the TV or TV furnishing.

ALWAYS use either the safety hardware as instructed or other wall anchoring device.

Relocating audio and/or video equipment to furniture not specifically designed to support audio and/or video equipment may result in death or serious injury due to furniture collapse or over turning onto a child.

NEVER place a TV on furniture that is not intended to support a TV.

NEVER exceed the maximum size and weight of the TV shown in the instructions.

Be sure to apply the TV warning label as shown in the instructions.

Overloading drawers and shelves may result in furniture that can break or sag, or tip-over which may result in injury.

NEVER exceed the weight limits shown in the instructions.

Place the heavier items on lower shelves as far back from the front as possible.

Load the bottom surfaces first to avoid top-heavy furniture.

Moving furniture that is not designed to be moved or equipped with casters may result in injury or damage to furnishings or personal property.

ALWAYS unload shelves and drawers, starting with the top surfaces, before moving.

NEVER push or pull furniture on carpet. Have a friend help lift properly to move and/or reposition it.

1-YEAR LIMITED WARRANTY

1. Provides limited warranty coverage to the original purchaser of this product for a period of one year from the date of purchase against defects in materials or workmanship of components.

As used in this Warranty, "defect" means imperfections in components which substantially impair the utility of the product. This Warranty gives you specific legal rights, and you may also have other rights which vary from state to state.

2. There is no warranty coverage for defects or conditions that result from the **failure** to follow product assembly instructions, information or warnings, misuse **OR** abuse, intentional damage, fire, flood, alteration or modification of the product, or use of the product in a manner inconsistent with its intended use, nor any condition resulting from incorrect or inadequate maintenance, cleaning, or care. There is also no warranty coverage for rented products or any products purchased "used" or "as is", at a distress or going-out-of-business sale, or from a liquidator.

3. As the exclusive remedy under this Warranty, we (at our sole option) will repair or replace any defective furniture component. We may require independent confirmation of the claimed defect and proof of purchase. Replacement parts will be warranted for only the remaining period of the original Warranty. **SHALL HAVE NO LIABILITY for ANY INCIDENTAL OR CONSEQUENTIAL DAMAGES OF ANY KIND** and all such damages are **EXCLUDED FROM THIS WARRANTY**, such as loss of use, disassembly, transportation, labor or damage to property on or near the product. Some states do not allow the exclusion or limitation of incidental or consequential damages, so the above limitation or exclusion may not apply to you.

4. This Warranty applies only to warranted defects that first arise and are reported to within the warranty coverage period. The Warranty cannot be transferred to subsequent owners or users of the product, and it shall be immediately void in the event the product is resold, transferred, leased or rented to any third party or person other than the original purchaser.

5. THERE ARE NO OTHER WARRANTIES APPLICABLE TO THIS PRODUCT. Under the laws of certain states, there may be no implied warranties from and all implied warranties, **INCLUDING ANY IMPLIED WARRANTY OF MERCHANTABILITY OR FITNESS FOR A PARTICULAR PURPOSE** are disclaimed where allowed by law. **TO THE EXTENT ANY IMPLIED WARRANTIES ARE APPLICABLE, ANY IMPLIED WARRANTIES, INCLUDING ANY IMPLIED WARRANTY OF MERCHANTABILITY OR FITNESS FOR A PARTICULAR PURPOSE, ARE LIMITED IN DURATION TO THE DURATION OF THIS EXPRESS WARRANTY** or the minimum period allowed by law, whichever is shorter. Some states do not allow limitations on how long an implied Warranty lasts, so the above limitation may not apply to you.