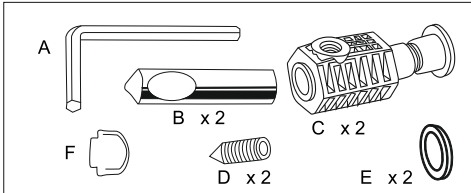
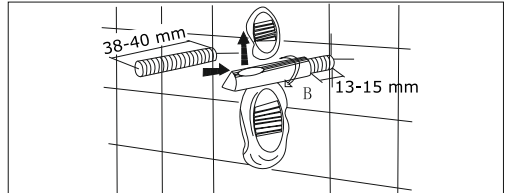


# WALL HUNG TOILET

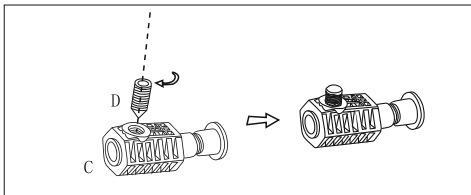
## INSTALLATION INSTRUCTIONS



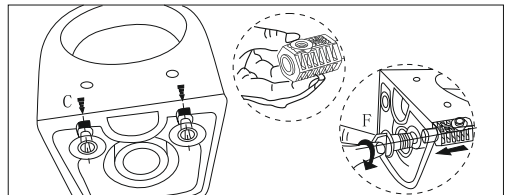
1. Parts list: A, B, C, D, E, F



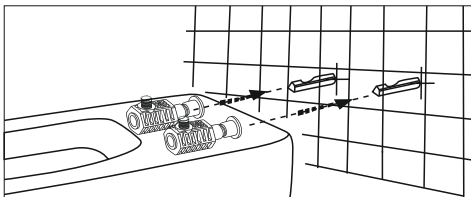
2. Screw mandrel B onto the threaded rod and set the notch of the screw vertically upwards. The dimensions may vary, according to the manufacturing tolerance of the ceramics.



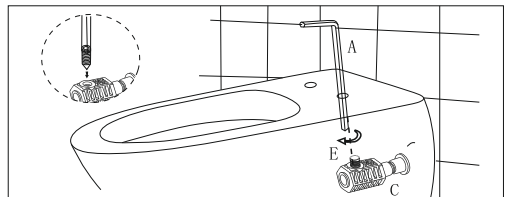
3. Lightly screw screw D into part C.



4. Screw the C part onto the ceramic, insert it under the nut seal E and tighten with the spanner F.



5. Slide the ceramic onto the mandrels B



6. Tighten the screw with key A, use guide tubes for easier assembly. Installation complete. Sit back for a stability check.

### Cleaning & Maintenance

1. Do not touch acid, ammonia, chlorine, do not use abrasive cleaners.
2. Toilet bowl surfaces should only be cleaned gently, with a cloth and a mild detergent solution.

