

VEVOR[®]

TOUGH TOOLS, HALF PRICE

Technical Support and E-Warranty Certificate www.vevor.com/support

BEVERAGE DISPENSER

**MODEL:LYJ10LX2/LYJ10LX3/LYJ10LX4/LYJ12LX1/LYJ12LX2
/LYJ12LX3/LYJ12LX4/LYJ18LX1/LYJ18LX2/LYJ18LX3**

We continue to be committed to provide you tools with competitive price.

"Save Half", "Half Price" or any other similar expressions used by us only represents an estimate of savings you might benefit from buying certain tools with us compared to the major top brands and does not necessarily mean to cover all categories of tools offered by us. You are kindly reminded to verify carefully when you are placing an order with us if you are actually saving half in comparison with the top major brands.

VEVOR[®]

TOUGH TOOLS, HALF PRICE

BEVERAGE DISPENSER

MODEL:LYJ10LX2/LYJ10LX3/LYJ10LX4/LYJ12LX1/LYJ12LX2/LYJ12LX3/LYJ12LX4/LYJ18LX1/LYJ18LX2/LYJ18LX3



NEED HELP? CONTACT US!

Have product questions? Need technical support? Please feel free to contact us:

Technical Support and E-Warranty Certificate
www.vevor.com/support

This is the original instruction, please read all manual instructions carefully before operating. VEVOR reserves a clear interpretation of our user manual. The appearance of the product shall be subject to the product you received. Please forgive us that we won't inform you again if there are any technology or software updates on our product.

Main technology parameters




Model	LYJ18L	LYJ18Lx2	LYJ18Lx3
Power Supply	220V-240V 50Hz 110V-130V 60Hz		
Power	Cold 300w	Cold 370W	Cold 512W
Cold-beverage temperature	7-12°C	7-12°C	7-12°C

Model	LYJ12L	LYJ12Lx2	LYJ12Lx3	LYJ12Lx4
Power Supply	220V-240V 50Hz 110V-130V 60Hz			
Power	Cold 246W	Cold 286W	Cold 370W	Cold 510W
Cold-beverage temperature	7-12°C	7-12°C	7-12°C	7-12°C

Model	LYJ10Lx2	LYJ10Lx3	LYJ10Lx4
Power Supply	220V-240V 50Hz 110V-130V 60Hz		
Power	Cold 270W	Cold 430W	Cold 440W
Cold-beverage temperature	7-12°C	7-12°C	7-12°C

Tips:

Please purchase a model that is suitable for the local voltage

	<p>Warning-To reduce the risk of injury, user must read instructions manual carefully.</p>
	<p>Indoor Use Only</p>
	<p style="text-align: center;">CORRECT DISPOSAL</p> <p>This product is subject to the provision of european Directive 2012/19/EU. The symbol showing a wheelie bin crossed through indicates that the product requires separate refuse collection in the European Union. This applies to the product and all accessories marked with this symbol. Products marked as such may not be discarded with normal domestic waste, but must be taken to a collection point for recycling electrical and electronic devices.</p>

Important Safeguards

When using electrical appliances, basic safety precautions should be followed, including the following.

1. **READ ALL INSTRUCTIONS.**
2. **Unplug from outlet when not in use, before putting on or taking off parts, and before cleaning.**
3. Please check that the specified supply voltage in the product is consistent with the supply voltage(AC only).
4. This appliance can be used by children aged from 8 years and above and persons with reduced physical, sensory or mental capabilities or lack of experience and knowledge if they have been given supervision or instruction concerning use of the appliance in a safe way and understand the hazards involved.
5. Children shall not play with the appliance. Cleaning and user maintenance shall not be made by children without supervision.
6. To protect against electrical hazards, do not put the Drink Mixer in water

or other liquids

7. Avoid contact with moving parts.

8. Do not operate the Drink Mixer or any other electrical equipment with a damaged cord or plug, or after the unit malfunctions or is dropped or damaged in any manner. Return it to the nearest authorized service facility for examination, repair, or adjustment.

9. Do not use outdoors. **FOR HOUSEHOLD USE ONLY**

10. Do not let the cord hang over the edge of the table or counter or touch hot surfaces.

11. Put this instruction manual in a safe place. Do not discard.

12. If the supply cord is damaged, it must be replaced by the manufacturer, its service agent or similarly qualified persons in order to avoid a hazard.

13. **Electric Shock Danger!** Non-professional personnel are forbidden to repair the products, otherwise it may result in electrical shock. When failures happen, it should be repaired by a qualified maintenance personnel.

14. **WARNING!** It is strictly prohibited to put the main body of the machine and the power cord into any liquid. The machine must be fully cool before cleaning.

15. Do not place the product directly on the fire or near the source of fire, otherwise the product will be damaged or even result in danger. Once part of the product is on fire, do not directly use water to extinguish the fire. Use a wet cloth to cover the fire site.

16. When the plug is plugged into the socket, it must be plugged to the end, otherwise it will cause the components overheating and burning due to poor contact.

17. Do not leave the product to work with no one watching. If the machine is overheating, please stop working immediately and unplug the power.

FCC Information:

CAUTION: Changes or modifications not expressly approved by the party responsible for compliance could void the user's authority to operate the

equipment!

This device complies with Part 15 of the FCC Rules. Operation is subject to the following two conditions:

- 1) This product may cause harmful interference.
- 2) This product must accept any interference received, including interference that may cause undesired operation.



WARNING: Changes or modifications to this product not expressly approved by the party responsible for compliance could void the user's authority to operate the product.

Note: This product has been tested and found to comply with the limits for a Class B digital device pursuant to Part 15 of the FCC Rules, These limits are designed to provide reasonable protection against harmful interference in a residential installation.

This product generates, uses and can radiate radio frequency energy, and if not installed and used in accordance with the instructions, may cause harmful interference to radio communications. However, there is no guarantee that interference will not occur in a particular installation. If this product does cause harmful interference to radio or television reception, which can be determined by turning the product off and on, the user is encouraged to try to correct the interference by one or more of the following measures.

- Reorient or relocate the receiving antenna.
- Increase the distance between the product and receiver.
- Connect the product to an outlet on a circuit different from that to which the receiver is connected.
- Consult the dealer or an experienced radio/TV technician for assistance.

Chapter One Safety Precaution

 <p>Notice</p>	<ul style="list-style-type: none"> • Prevent water and conductive liquid entering into the machine; • Please do not throw stick and other things into the machine; • When the machine is in moving process, the angle should not beyond 45°; • The distance between ventilation slot and wall should not be less than 20CM, to keep good ventilation, dry and clean.
 <p>Safety warning</p>	<p>The machine should be operated by professional or others have been trained;</p> <ul style="list-style-type: none"> • To ensure personal safety, please keep the machine properly grounded; • Ensure that the power supply is the same as the nameplate, and the working voltage bias between rated voltage is $\pm 10\%$; • If the power wire is damaged, it should be changed by the professionals to avoid danger; • When stop using , disassembling or do some cleaning, please cut off the power; • To avoid electric shock, please do not pour water on the plug, motor and other electrical components. • Foamed material flammable, the user may not arbitrarily discarded or dispose, should be in accordance with the relevant provisions of the state by the designated department recycling.

Chapter Two Basic structure

**Exploded view (two bowl)
Agitator type**

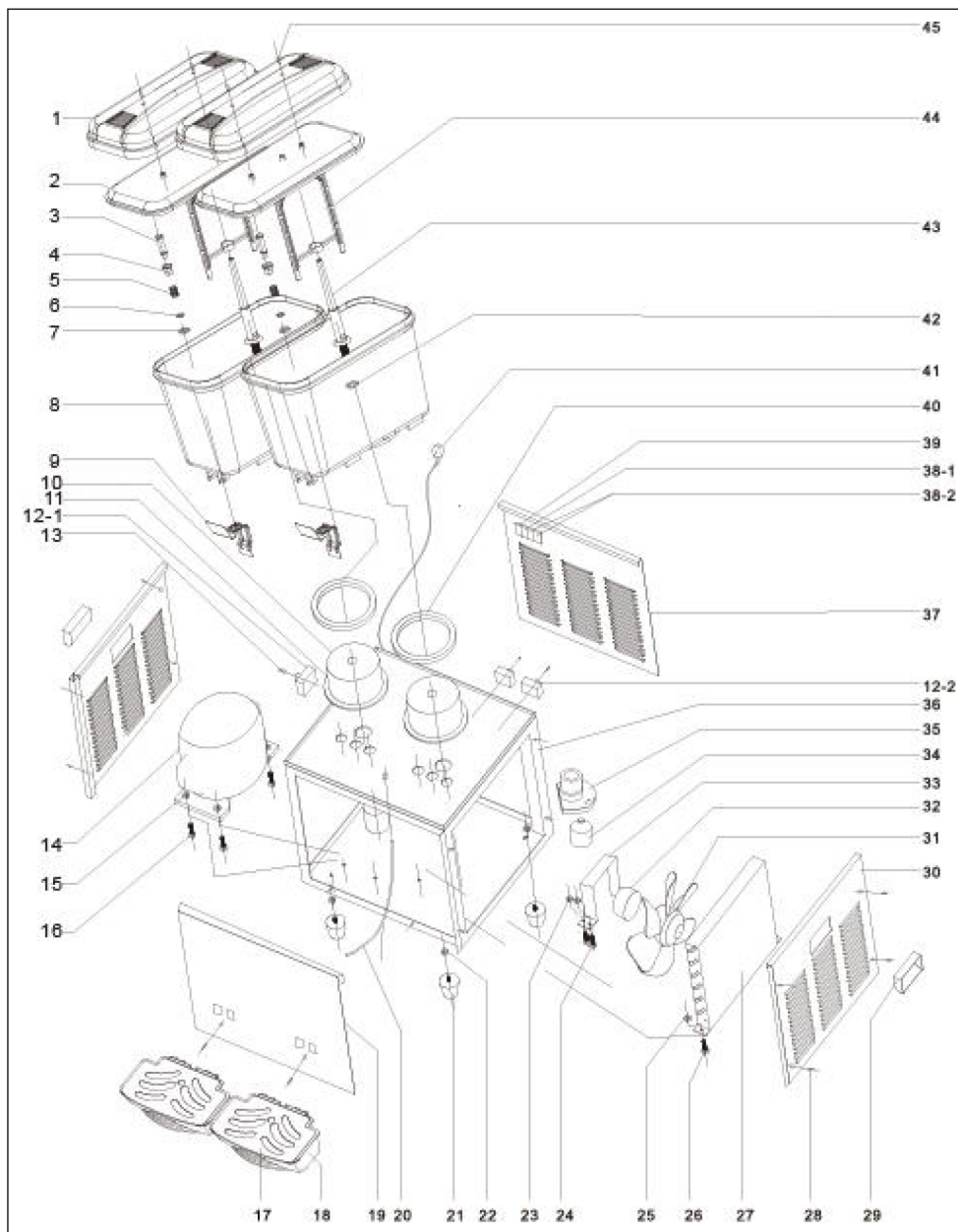


Diagram for reference only, please in kind prevail.

Tips: The structure of other cylinder blocks is similar to this structure, but the quantity may vary

1	Roof	24	Support fixed screw rod
2	inner Roof	25	Outer hex nut
3	Stainless steel spout	26	Outer hex screw
4	fixed nut	27	Condenser
5	Spring	28	Mounting screw for coaming
6	Stainless steel cover	29	Left/right handle
7	C- snap spring	30	Left/right panel
8	Tank	31	Fan
9	oulet handle	32	Fan motor
10	Evaporator	33	holder of fan motor
11	seal ring of evaporator	34	Mix motor
12-1	Cold temperature control	35	Mixing motor base
13-12-1	Temperature control screw	36	Main body frame
14	compressor	37	Back panel
15	Outer hex nut	38-1	Mix switch
16	Outer hex screw	38-2	Cooling switch
17	roof of Water tray	39	Heating switch
18	box of watertray	40	Seal ring for tank
19	Front panel	41	Power line
20	Capillary drain	42	small seal ring of Mix pole
21	Machine foot	43	Mix pole
22	Outer hex nut	44	Mix leaf
23	Support fixed nut	45	Tank screw
Exploded view (two bowl) Agitator type			

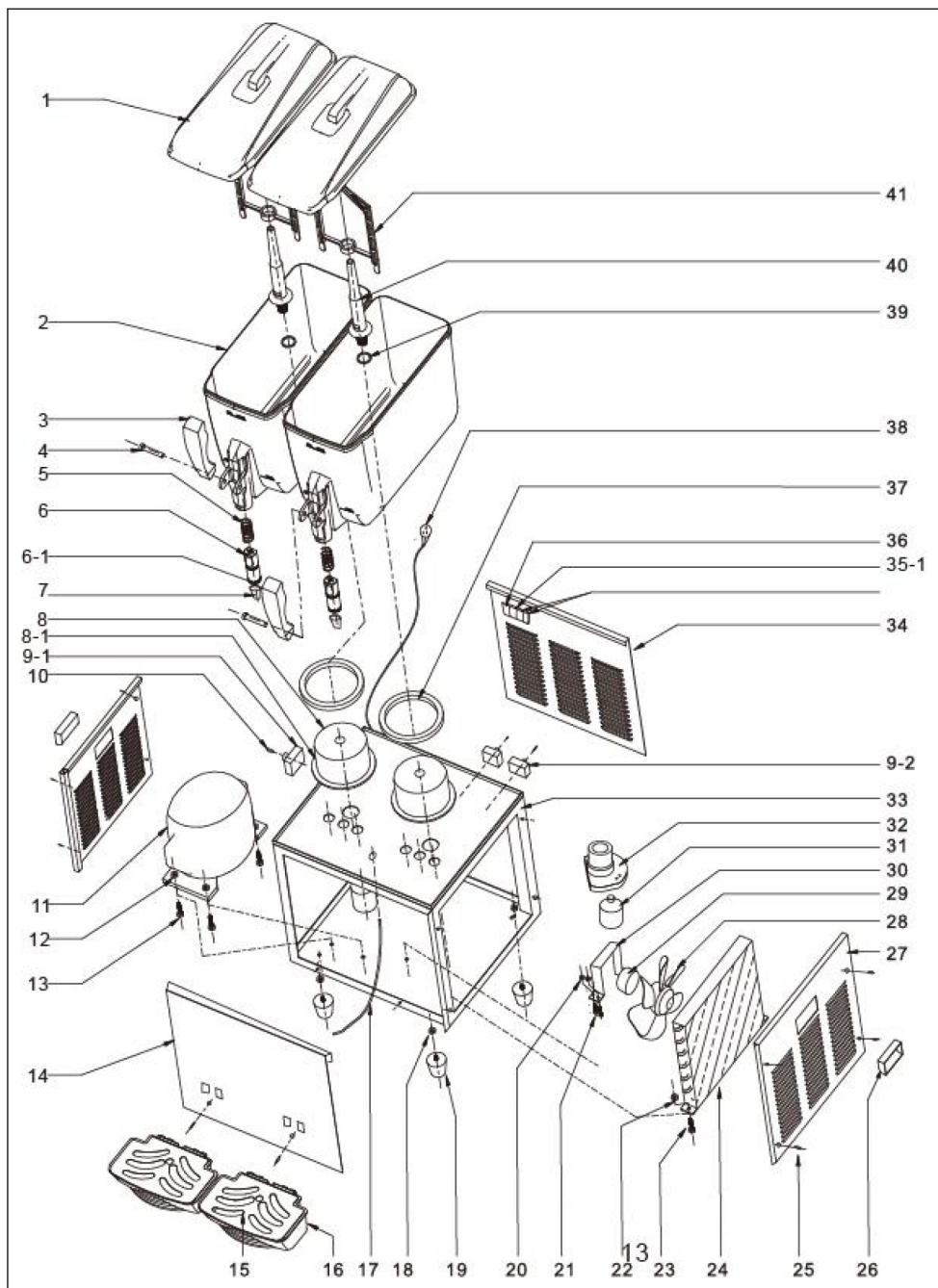


Diagram for reference only, please in kind prevail.

Tips:The structure of other cylinder blocks is similar to this structure, but the quantity may vary

1	Roof	21	Support fixed screw rod
2	Tank	22	Outer hex nut
3	handle	23	Outer hex screw
4	Pin of handle	24	Condenser
5	Spring	25	Mounting screw for coaming
6	Plunger	26	Left/right handle
6-1	small Seal ring	27	Left/right panel
7	Nipple	28	Fan
8	Evaporator	29	Fan motor
8-1	Small Seal ring for Evaporator	30	holder of fan
9-1	Cold temperature control	31	the holder of fan motor
10-9-1	Temperature control screw	32	Mixing motor
11	Compressor	33	Main body frame
12	Outer hex nut	34	Back panel
13	Outer hex screw	35-1	Cooling switch
14	Front panel	36	Startup switch
15	Roof of Watertray	37	Seal ring of tank
16	the box of watertray	38	Power line
17	Capillary drain	39	Seal ring of Mix pole
18	Support fixed nut	40	Mix pole
19	Machine foot	41	Mix leaf
20	Support fixed nut		

Chapter Three Installation and operation

A. Installation

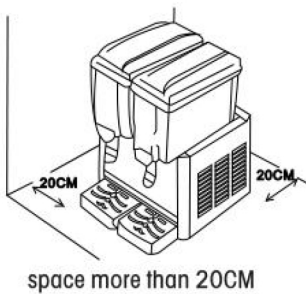
1) Remove the package and move out the machine to a proper place, and check the goods according to the packing list, if there exists differences, please contact with distributor.

2) Operating environment

a. Ambient temperature range: $10^{\circ}\text{C}\sim 38^{\circ}\text{C}$

Ambient humidity: relative humidity $\leq 90\%$

b. The machine should be placed indoors at a drafty environment, for better ventilation efficiency, more than 20cm space is required around the machine.



c. Avoid direct sunlight and keep the machine away from heat source, in order to avoid water and other liquid splashing into machine, do not place it at a humid or easily-splashing place.

3) Installation of the Tank Assembly

2) Clean the machine

a. Please wash the machine on time, in order to stay healthy.

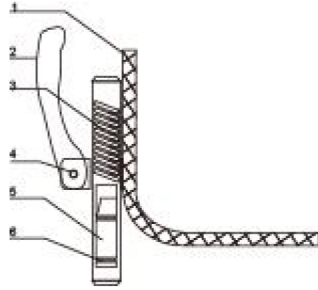
b. Turn all the power off.

c. Let the remaining liquid out of cylinder, then remove the cylinder < just hold and move slowly >

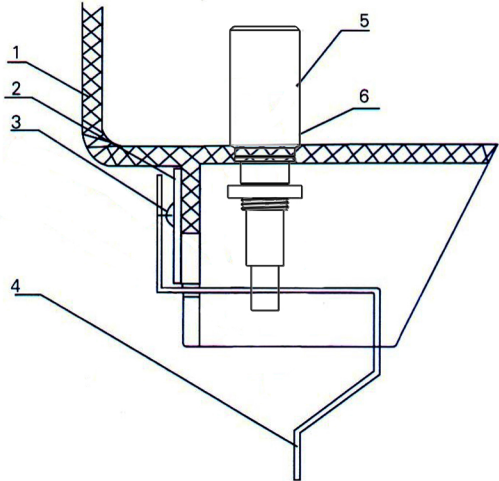
d. Cleaning cylinder:

Take off the nut or valve plate, then remove the gaske and impeller.

No	Part
1	Cylinder
2	Handle
3	Spring
4	Pin
5	Out water mouth
6	Outlet sealing ring

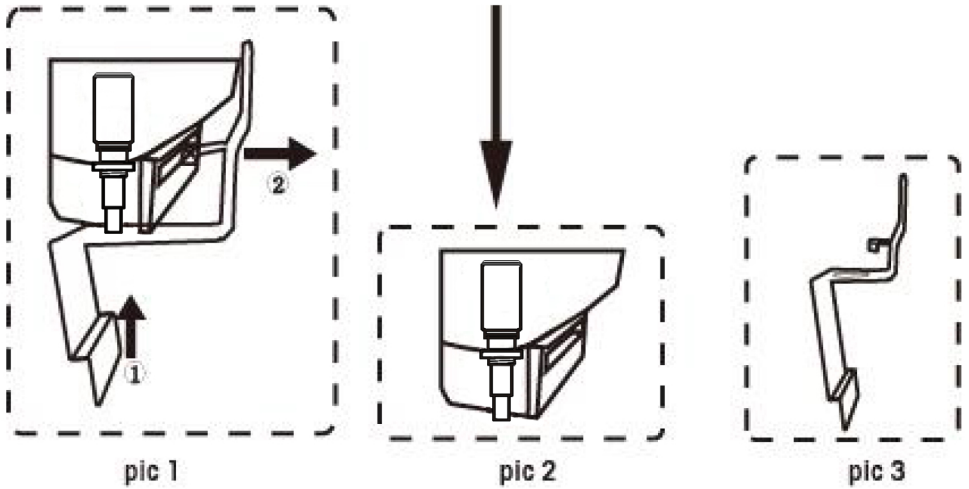


No	Part
1	Cylinder
2	Plate
3	Self-fapping screws
4	Valve plate
5	Spool
6	Gasket



Water Outlet Dismounting Method

The water outlet is inslalled at the tank , we have toup lift the bottom (see①) then pull out in the fron(see②)



Handle removal method

<p style="text-align: center;">pic 1</p>	<p style="text-align: center;">pic 2</p>	<p style="text-align: center;">pic 3</p>
<p style="text-align: center;">Pull out the plunger pin first</p>	<p style="text-align: center;">Then remove the handle</p>	<p style="text-align: center;">Finally take out the plunger and spring</p>

3) Plug in

The socket and other appliance should comply with user's local electrical regulations and national rules, also the voltage and current should comply with the rated value according to nameplate, (if use external plug, should use connection board with right current), and the machines should be properly grounded.

If the voltage ranges too much(beyond the rated value $\pm 10\%$), it may cause the machine can not start, or break the PCB board, or break compressor. In this condition, adding a appropriate voltage stabilizer is necessary.

B. Testing

When the tank is installed well, firstly pour in a little drinking water. Check the bottom of the tank and dispensing mouth, if there is a slight leakage on the bottom of the tank, use your hand diagonally to take the tank and press downward, to make sure the tank and O-ring into the right place; if there is leakage on the dispensing mouth, please check the O-ring is in proper place, or change it if it is necessary. Then add beverage into the bowls and switch on cooling.

Chapter Four Usage instruction

A. Ingredients preparation

- 1)Ingredients include : dried fruit powder, syrup or plum juice and drinking water, mix the fruit juice and the drinking water according to certain proportion (for delicious advisable). Stir mixed liquor completely in a clean container, and particles are not allowed; otherwise the dispensing mouth will be blocked.
- 2)The temperature of mixed liquor cannot exceed 35°C .
- 3)Please remember that do not use too thick juice or drink with precipitate, otherwise easily result in water pipe blockage.



Warning: connect or use drinking water, the formula materials should conform to the requirements of the food hygiene license.

B. Operation method

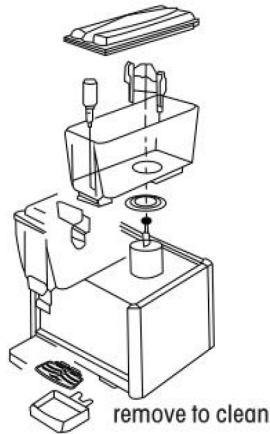
- 1) Pour the drink into the tank and make sure the drink shall not exceed the maximum level line, not less than the minimum level line.
- 2) Plug the power plug after pouring the drink, turn on the refrigeration and stirring switches to run the machine. When the machine reaches the set temperature, it will stop refrigeration, but will keep rotating.
- 3) After turning off the refrigeration switch, it need to wait for 3 minutes for turning on the switch again, otherwise it will damage the compressor.

4) Temperature range: for cold drink: 7 -12°C;

5) Empty drinks in bowl when it's off business hours to prolong key parts service lifetime

Chapter Five Daily clean and maintenance

A. Cleaning



1)Wash all parts of bowl thoroughly in mild detergent and warm water

2)Rinse in clean running water.

3)Reassemble all parts of bowl.

4)Pour sanitizer and water into bowl. Turn on beater motor and allow sanitizer to flow inside of the bowl for a period of time.

5)Drain liquid through the valve completely and thoroughly during each step of the cleaning process (wash, rinse, sanitize, rinse).



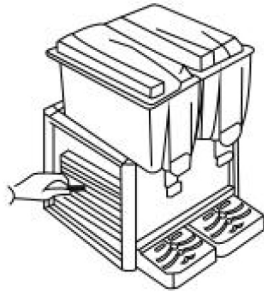
Notice: 1.The bowls assembly should be cleaned everyday.

2. O-ring should be checked after cleaning, and must be replaced if they are worn.

3.In case of parts heat cracking, with high temperature disinfection is prohibited and do not use more than 60°C boiled water to clean the tank and components.

B.Maintenance

Use a cleaning cloth or brush to clear away all the dust and attachments on the surface or inside of the machine regularly. Do not flush the interior of machine with water directly. Before cleaning, please cut off power and disconnect the plug, it is very important.



turn off clean ash

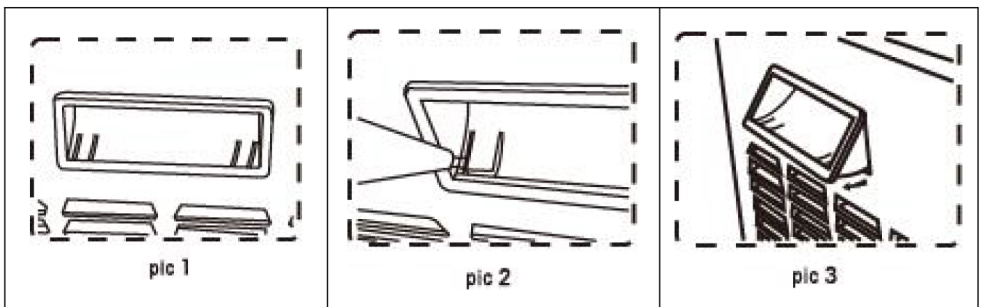
1)Cut off the power firstly, and disassemble all the panels of machines, then clear the dust attached to compressor, copper pipe and bottom panel. Using water is forbidden.

2)After being used over a period of time, the condenser maybe thick with dust, and this will affect radiating heat and cause bad cooling, so it needs periodic cleaning (every half year)

Step 1: Disconnected the main power switch.

Step 2: Remove the back panel and side panels.

Panel Dismounting Method



In order to take off the panel ,we have to take off the handle first (see pic 1)	Using slot type screwdriver pry up the panel side(see pic 2)	Pry up both side of the handle , then take off the handle from panel
--	---	--

Step 3: Clean dust with tools such as vacuum cleaner, high-pressure air and hairbrush, be careful while cleaning to avoid damaging the fins of the condenser.

3)Check all the screws and nuts if they are loose or rusty, and fasten or replace them to avoid causing noise.

4)Finally, assemble all the panels, fasten all screws, and clear the surface.

Chapter Six Trouble shooting

The following table lists showed the possible machine fault and its reason and processing method. For general simple fault, can follow the table processing method and processing, such as the fault is still cannot be ruled out, as well as more complex fault, please contact professional maintenance staff immediately, never sloppy handling, so as not to bring you unnecessary loss.

Troubles	Causes	Repair methods
Compressor stops Working	1 .The supply power off or not connected Switch damaged Circuit trouble Over load and the protector broken	1 .Check the supply power and socket Replace the switch Check and repair Check and replace
Compressor runs but no refrigeration	1 .Capillary stop 2.The refrigeration fluid leaked the electrical broken	1.replace the capillary or dry filter Check the systems and add the medicine Replace the electrical machine

Winnowing water abnormally	1 .differences in the pump inside impeller and holes damaged circuit damaged big clearance between the impeller and crock	1.clean 2.Replace the impeller and pump 3.check and repair 4.adjust the clearance
Crock leaking	Sealing ring old or installed badly	Replace or re-instal
Valve leaking	Sealing ring old or installed badly	Replace or re-instal

Manufacturer: Shanghaimuxinmuyeyouxiangongsi

Address: Shuangchenglu 803nong11hao1602A-1609shi, baoshanqu, shanghai 200000 CN.

Imported to AUS: SIHAO PTY LTD. 1 ROKEVA STREETEASTWOOD NSW 2122 Australia

Imported to USA: Sanven Technology Ltd. Suite 250, 9166 Anaheim Place, Rancho Cucamonga, CA 91730

UK	REP
-----------	------------

YH CONSULTING LIMITED. C/O YH Consulting Limited Office 147, Centurion House, London Road, Staines-upon-Thames, Surrey, TW18 4AX

EC	REP
-----------	------------

E-CrossStu GmbH
Mainzer Landstr.69,
60329 Frankfurt am Main.

VEVOR[®]

TOUGH TOOLS, HALF PRICE

Technical Support and E-Warranty Certificate

www.vevor.com/support