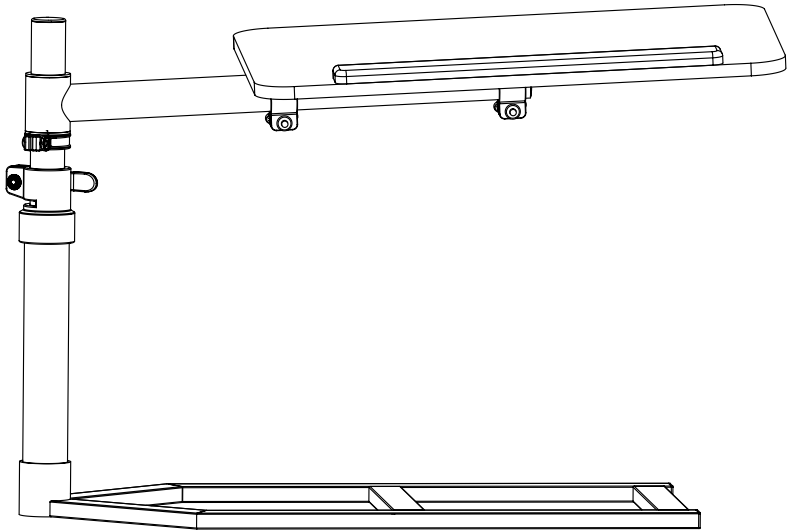


SIDEKITIX



Under Mattress Desk

Instruction Manual

SKU: SX-OBT-1C

[THIS PAGE INTENTIONALLY LEFT BLANK]



If you do not understand these directions, or if you have any doubts about the safety of the installation, please contact our product support team at 309-278-5303 or help@vivo-us.com for further assistance. Check carefully to make sure there are no missing or defective parts. Improper installation may cause damage or serious injury. Do not use this product for any purpose that is not explicitly specified in this manual. Do not exceed weight capacity. We cannot be liable for damage or injury caused by improper mounting, incorrect assembly or inappropriate use.



WARNING: CHOKING HAZARD

SMALL PARTS - NOT FOR CHILDREN UNDER 3 YEARS. ADULT SUPERVISION IS REQUIRED.



DO NOT EXCEED WEIGHT CAPACITY

FAILURE TO DO SO MAY RESULT IN SERIOUS INJURY.

We're Here for You

Open **Monday - Friday 7:00am - 7:00pm CST**, our dedicated support team can offer immediate assistance with rapid response times. If any parts are received damaged or defective, please contact us. We are happy to replace parts to ensure you have a fully functioning product.



Give us a Call:
309-278-5303

AVG. RESOLUTION TIME (*within office hrs*): **5M 4S**

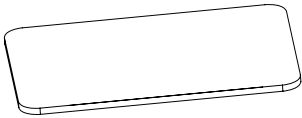


Email Us:
help@sidekiix.com

AVG. RESPONSE TIME (*within office hrs*): **1HR 8M**

- 23% within < 15m
- 38% within < 30m
- 61% within < 1hr
- 83% within < 2hr
- 92% within < 3hr

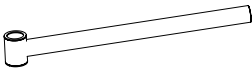
Package Contents



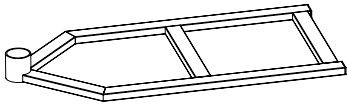
A (x1)
Tray



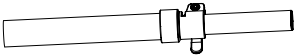
B (x1)
Wrist Pad



C (x1)
Arm



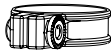
D (x1)
Base



E (x1)
Pole



F (x2)
Mounting
Bracket



G (x1)
Height Collar

Included Hardware & Tools



S-A (x3)
M6x16mm Screw



S-B (x4)
M5x15mm Screw



T-A (x1)
4mm Allen Wrench

Tools Needed:



**Phillips
Screwdriver**

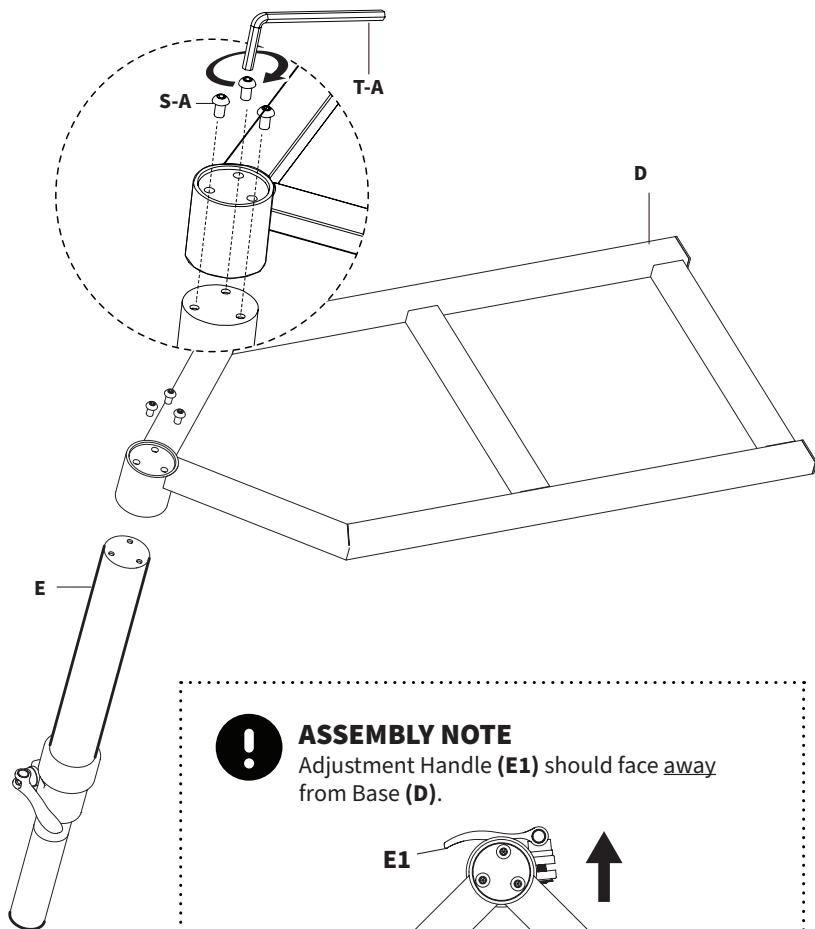
Weight Capacity:



ASSEMBLY STEPS

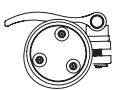
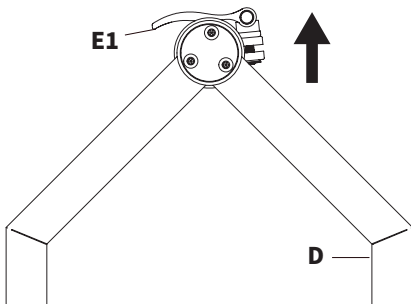
STEP 1

Attach the Base (**D**) to the bottom of the Pole (**E**) using the M6x16mm Screws (**S-A**), lining up the three holes on both pieces. Tighten the screws with 4mm Allen Wrench (**T-A**).



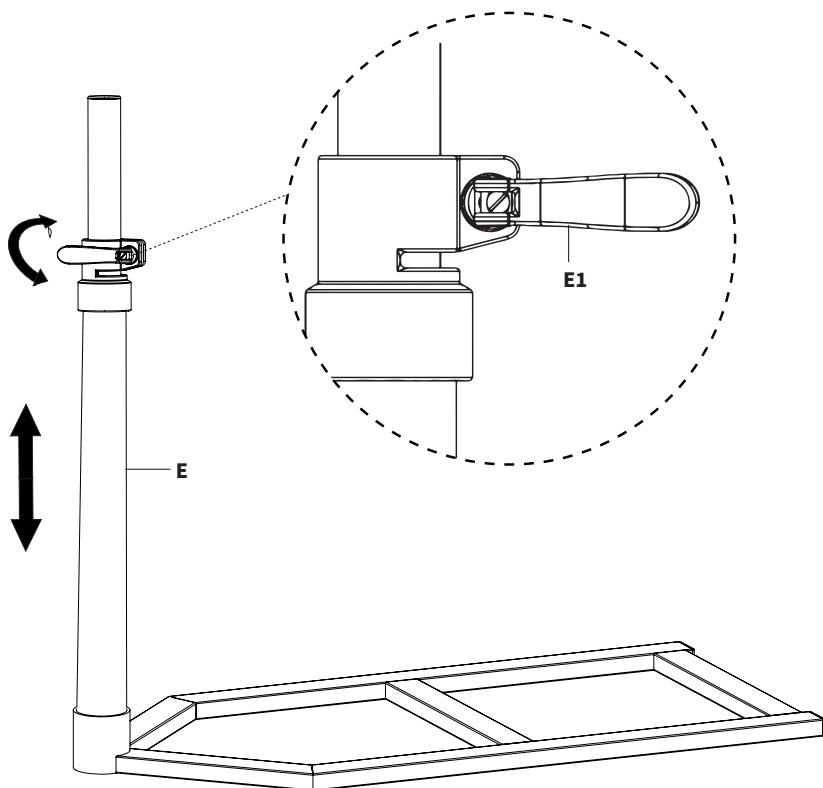
ASSEMBLY NOTE

Adjustment Handle (**E1**) should face away from Base (**D**).



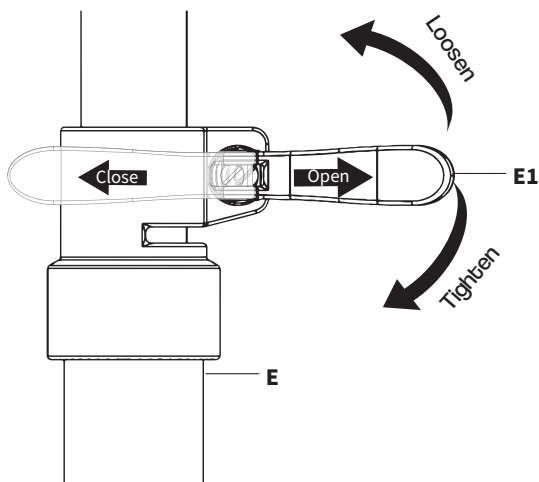
STEP 2

Open the Adjustment Handle (**E1**) on Pole (**E**) and swing outwards. Slide the Pole up and adjust to your desired height, then close to lock in place. **Note:** If pole will not slide, turn the Handle counter-clockwise to loosen the joint, then clockwise to tighten.



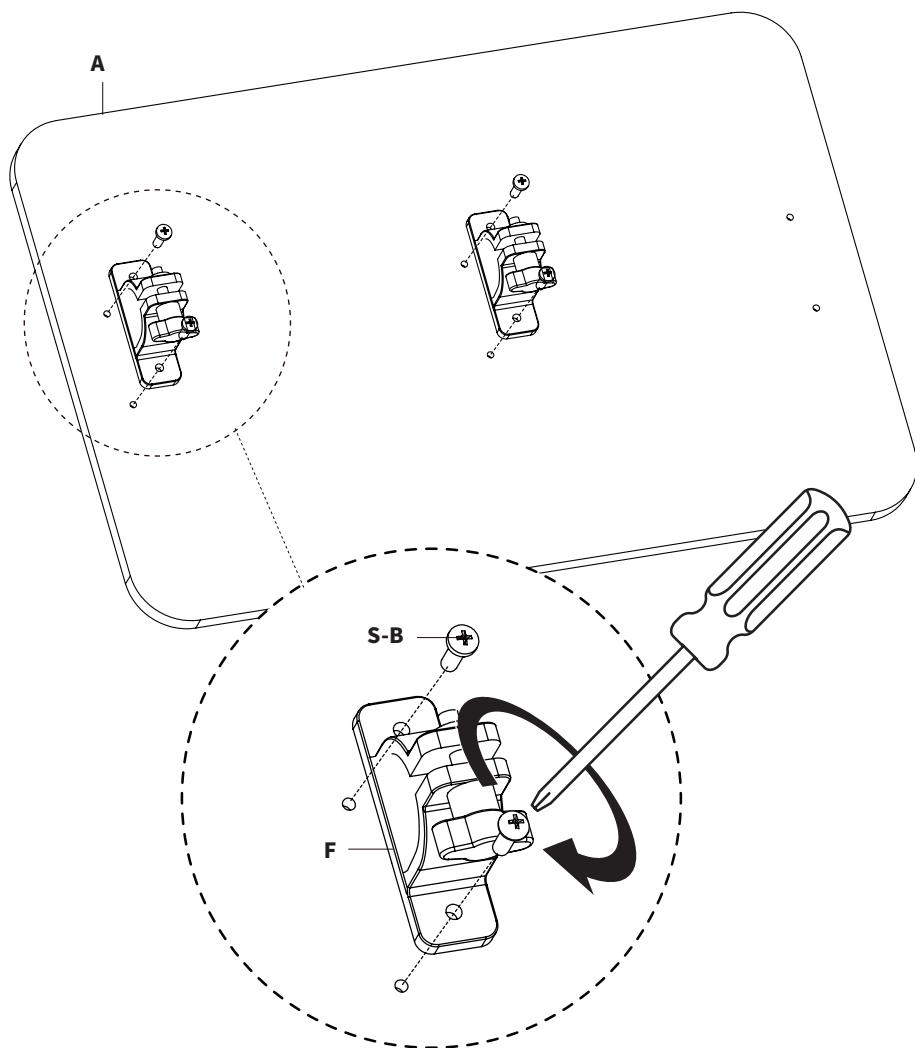
Height Adjustment

To adjust the height, open the Adjustment Handle (**E1**) on Pole (**E**) and swing outwards. Slide the Pole to your desired height, then swing the Handle closed to lock in place.



STEP 3

Attach the Mounting Brackets (**F**) to the underside of the Tray (**A**) using the M5x15mm Screws (**S-B**) in the center and the left outer hole set, as shown below. Tighten the screws with a Phillips screwdriver.



TRAY ORIENTATION

The tray will be assembled to work with either the left or right side of your mattress. The third, unused hole are used to change the orientation in the future, should you need to use it on the opposite side of the mattress at a later time.

STEP 4

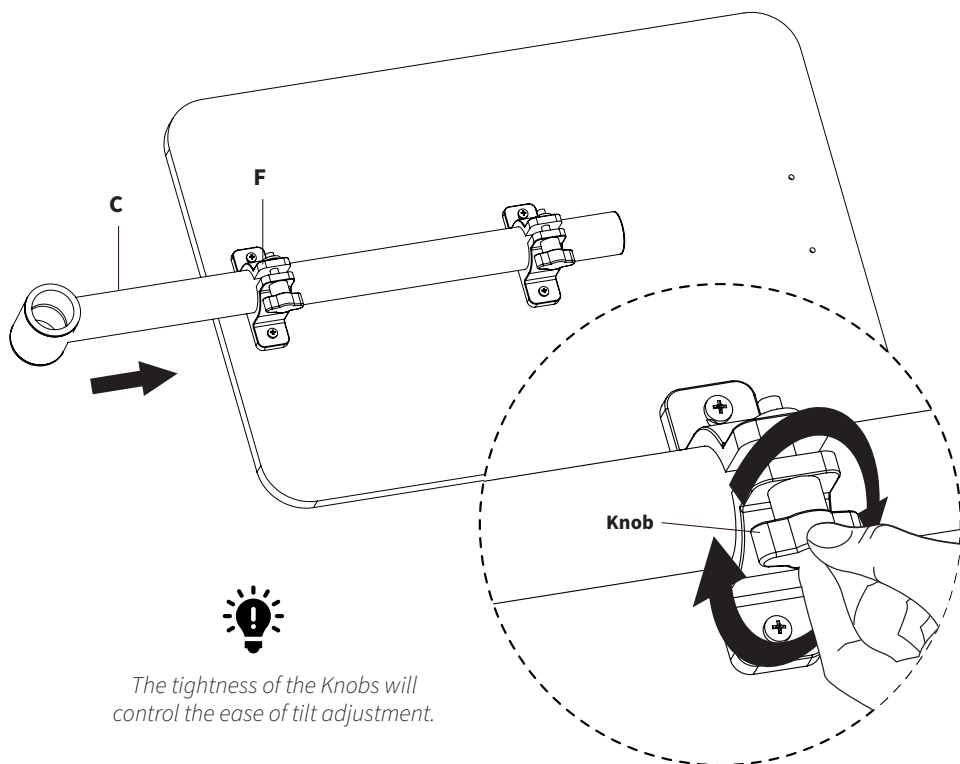
Take note of the sticker on the Arm **(C)** which indicates the top. Slide Arm **(C)** into the Mounting Brackets **(F)**, ensuring that the sticker is facing up. Tighten the **Knobs** on the Brackets **(F)** to secure the arm in place.

THIS SIDE UP



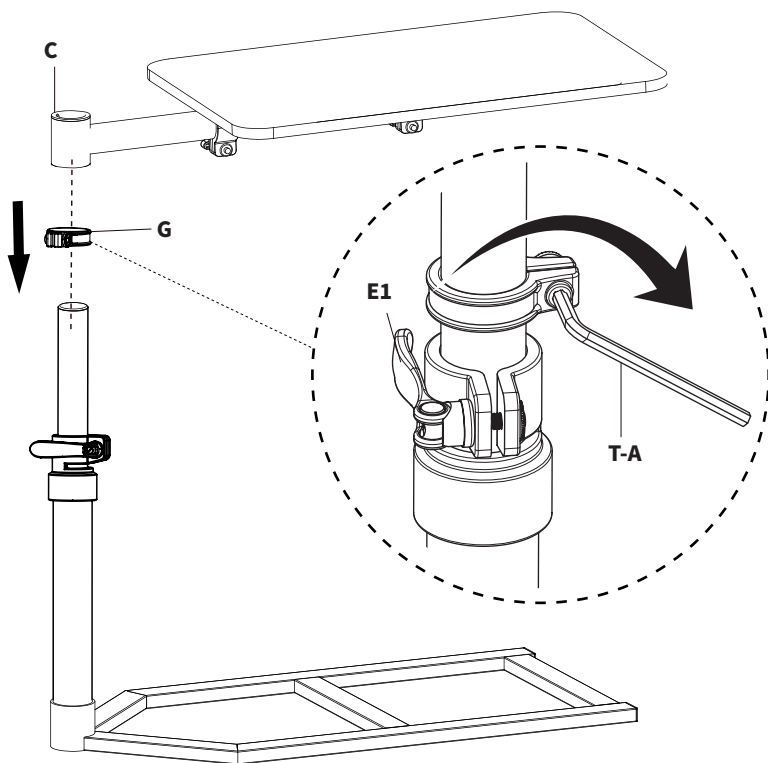
ASSEMBLY NOTE

Arm is slightly angled up to provide a stable work surface. To achieve, ensure that the **THIS SIDE UP** sticker is facing up when securing tray. *Sticker may be removed after assembly.*

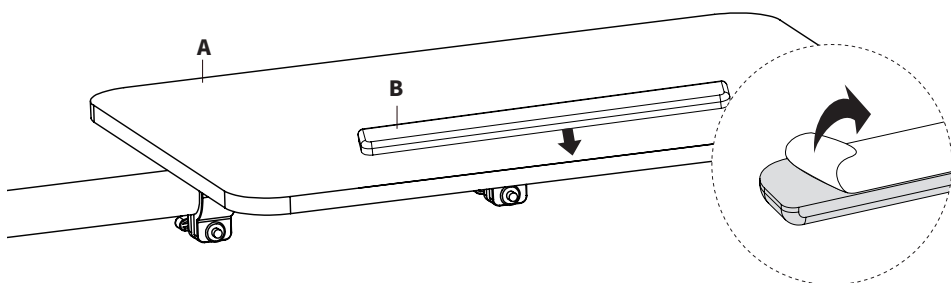


STEP 5

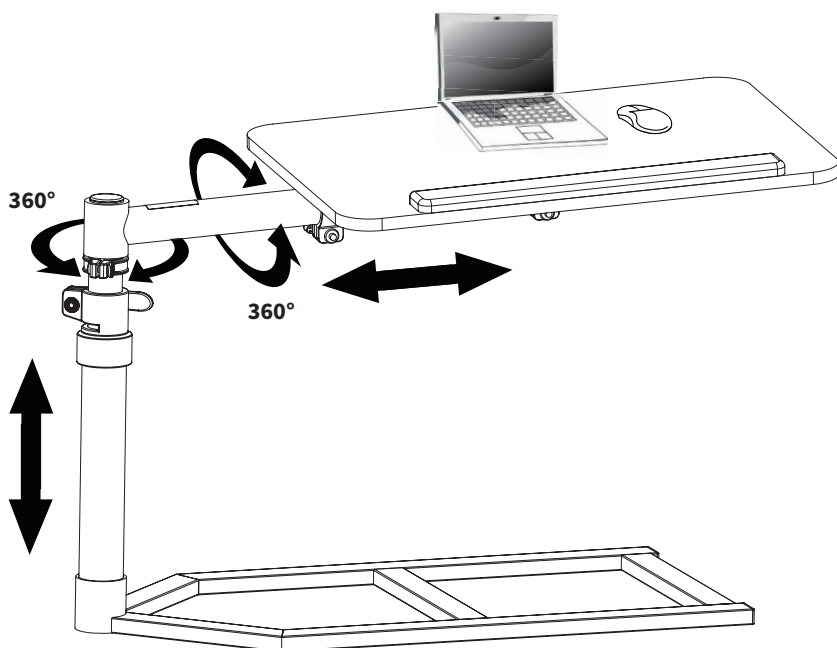
Slide Height Collar (**G**) onto the top of Pole (**E**) and secure using 4mm Allen Wrench (**T-A**), leaving just enough space on the pole for the Arm. Slide the Arm (**C**) onto the Pole so that it rests on the Collar. Height will be adjusted using Adjustment Handle (**E1**) in a future step.



Remove the protective film of the Wrist Pad (**B**) and apply it onto the front of the Tray (**A**), taking note of whether this will be used in a left or right orientation with your mattress.

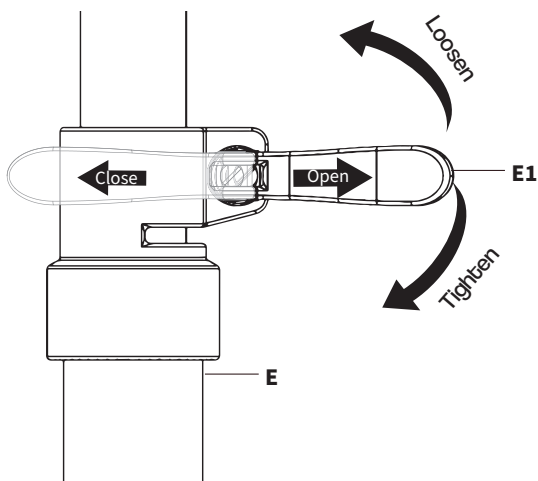


Adjust As Desired

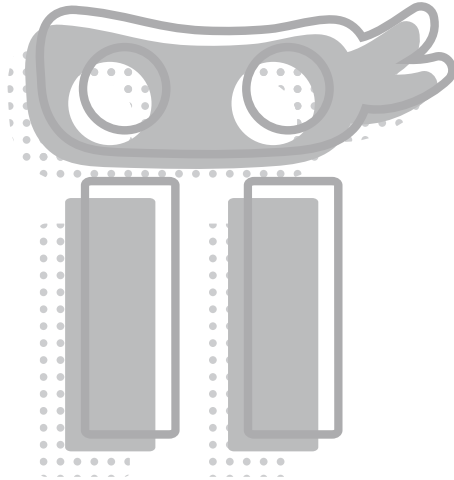


Height Adjustment

To adjust the height, open the Adjustment Handle (**E1**) on Pole (**E**) and swing outwards. Slide the Pole to your desired height, then swing the Handle closed to lock in place.



[THIS PAGE INTENTIONALLY LEFT BLANK]



Need Help? Get In Touch

Monday-Friday from 7:00am-7:00pm CST



help@sidekiix.com



309-278-5303