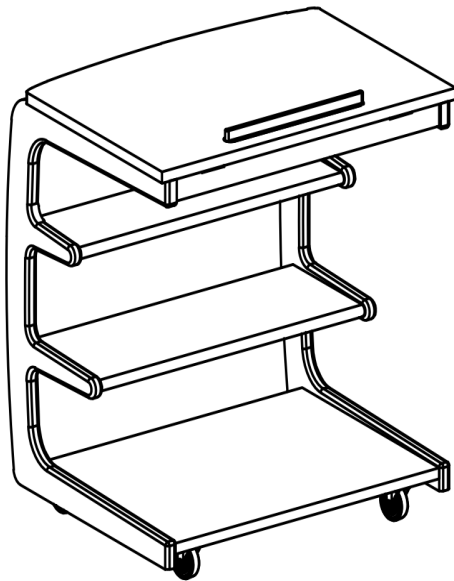


Installation Diagram

Parts List

Hardware Watch

Specification name: Side table 014/40CM



Number	Name	Icon	Specification	Quantity
1	left box		570*470*20MM	1
2	Right frame		570*470*20MM	1
3	Inner box assembly		400*425*53MM	1
4	base plate		340*380*17MM	1
5	Upper plate		340*150*17MM	1
6	lower boards		340*215*17MM	1
7	Rear connectingrod		356* ϕ 20MM	2
8	Cloth bags		335*380MM	1
9	Panel stopper		200*22*25MM	1

Number	Name	Illustration	Specification	Quantity
A	Open-end wrench		Opening 12MM	1
B	Casters (without brakes)		ϕ 25*43MMH	2
C	Casters (with brakes)		ϕ 25*43MMH	2
D	Hexagon socket screw		M6*25MM	4
E	Hexagon socket screw		M6*25MM	4
F	Flat gasket		M6*13MM	8
G	Allen wrench		M4*100*40MM (One end with a cross screwdriver)	1
H	2-in-1 cake lock		ϕ 15MM	8
I	Two-in-one screw		L=35MM	8

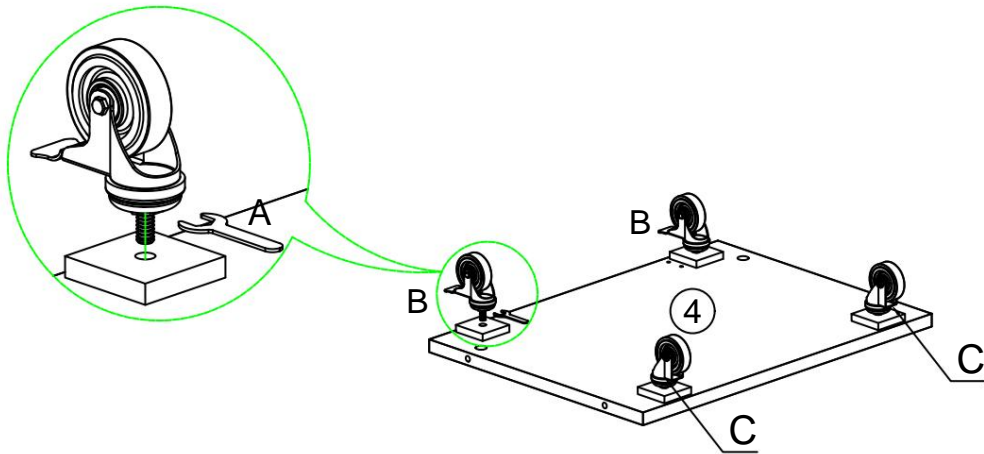
Number of installations



Hand Baoan

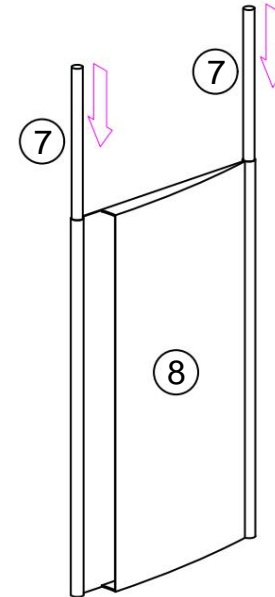
QC 02

Step 1



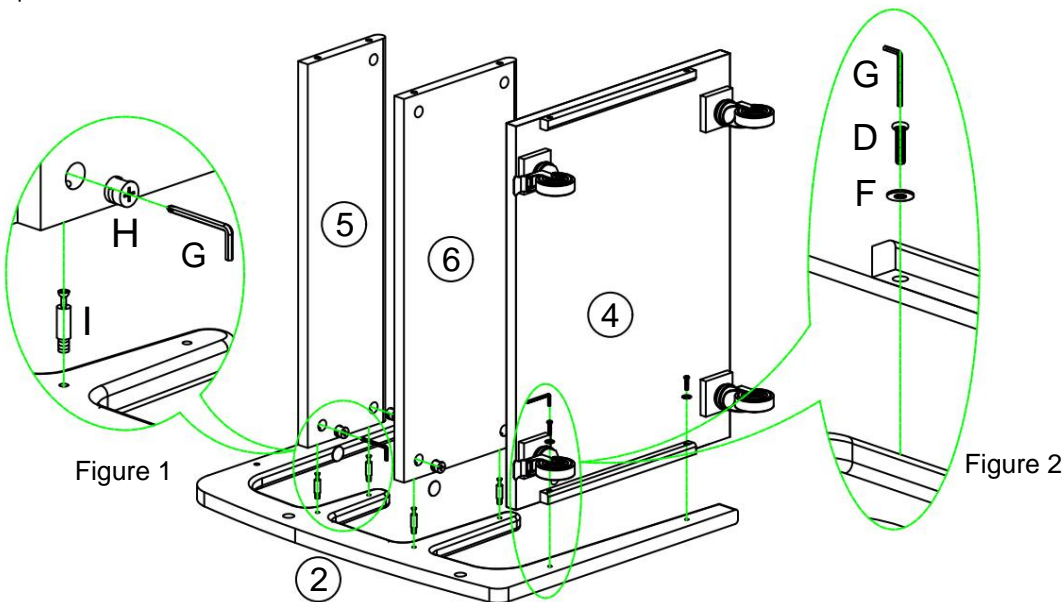
Note: After unpacking, please first check the instruction manual to see if the number of components as shown is correct. Then assemble as shown. Hardware (B) is a wheel with brakes. Please install it on the same side during installation for ease of use; Hardware (C) without brakes. During installation, use an open-end wrench to turn clockwise to tighten and counterclockwise to remove.

Step 2



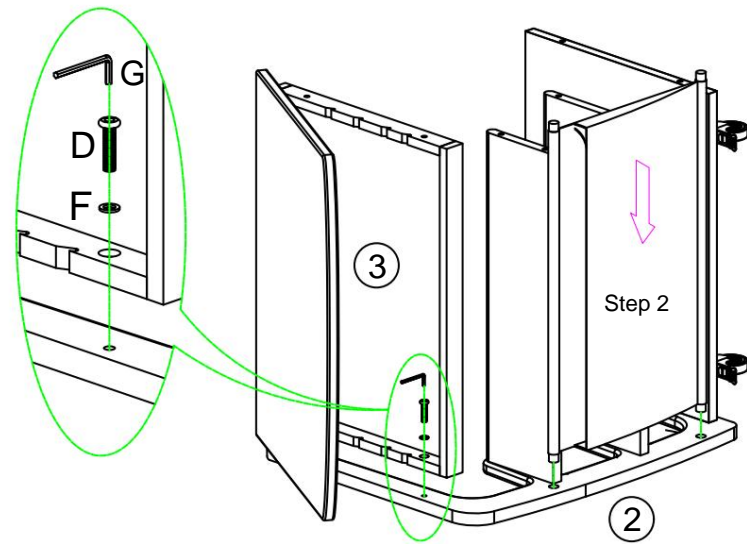
Insert component 7 into component 8 as shown in the picture.

Step 3



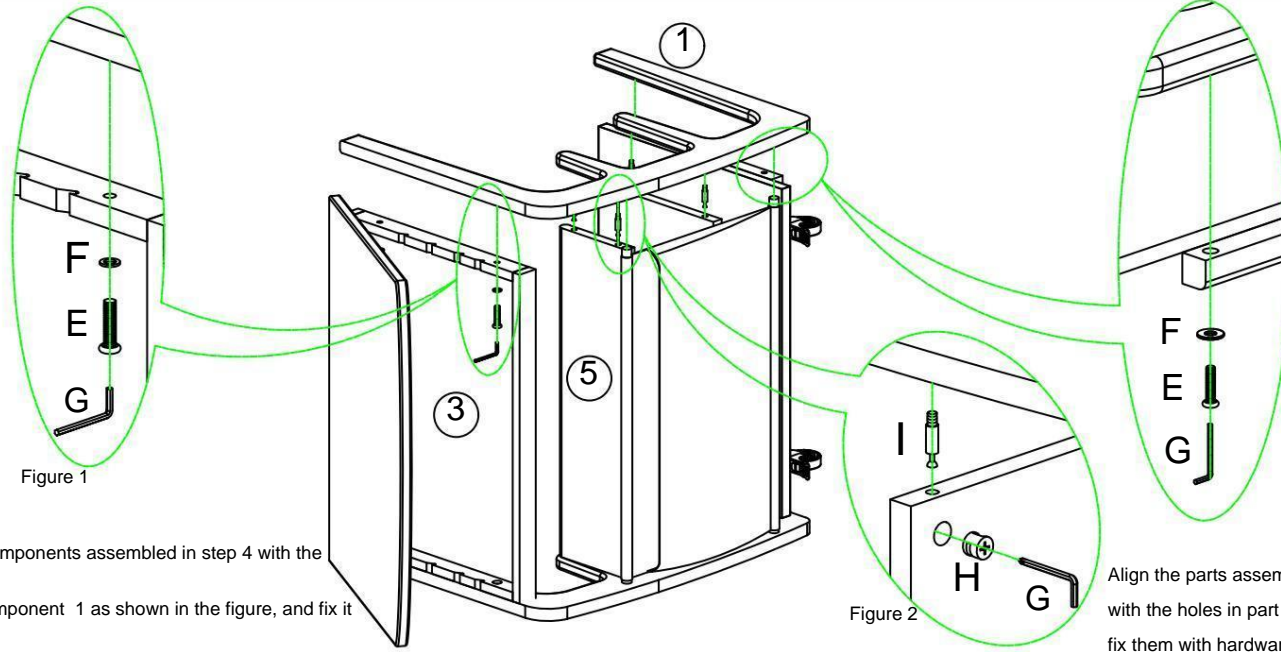
As shown in Figure 1, align parts 5 and 6 with the holes on the side of part 2 and fix them with hardware H, I, and G. As shown in Figure 2, align part 4 with the holes on the side of part 2 and fix them with hardware D, F, and G.

Step 4



Align component 3 with the hole on the side of component 2 as shown in the picture, fix it with hardware D, E, and G, and then insert the components assembled in step 2 into the hole on the side of component 2 as shown in the picture. Page:2-3

Step 5



Align the components assembled in step 4 with the holes of component 1 as shown in the figure, and fix it with hardware D, E, and F.

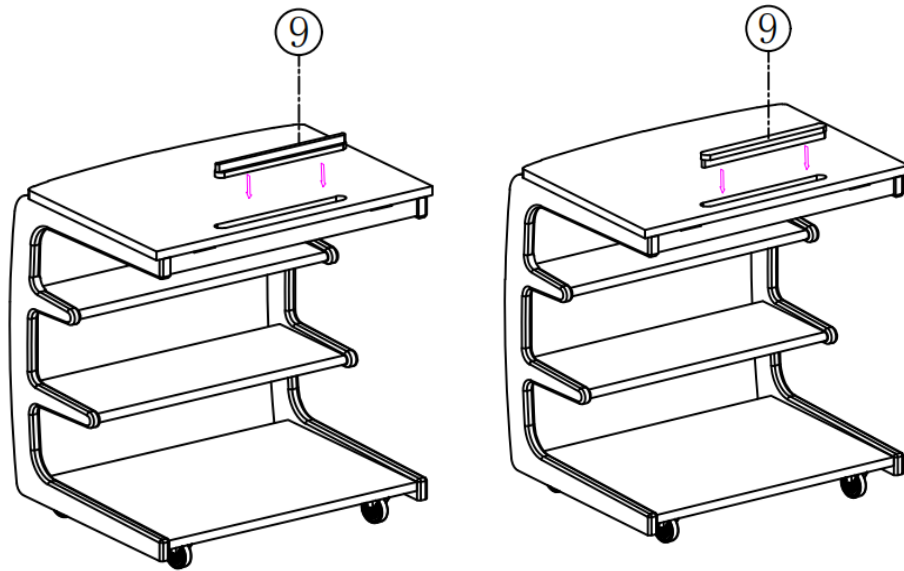
Figure 2

Align the parts assembled in step 4 with the holes in part 1 as shown, and fix them with hardware H, I, and F.

Figure 3

Align the parts assembled in step 4 with the holes in part 1 as shown, and secure them with hardware D, F, and G.

Step 6

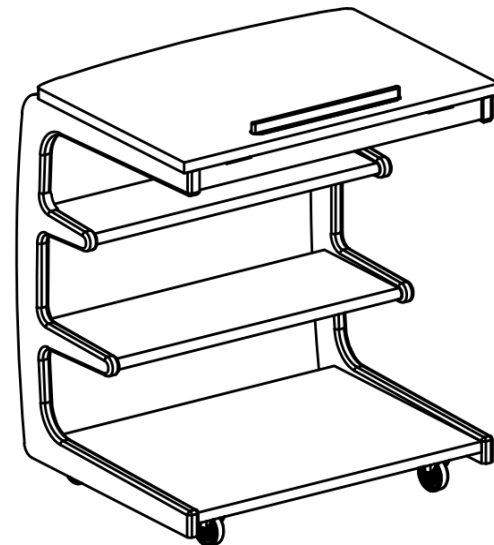


Install using the bookend-style method.

Install without the bookend-style method.

Insert component 9 into the reserved hole on the panel as shown in the figure.

Step 7



Assembly completed.