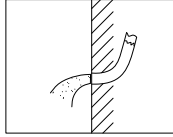
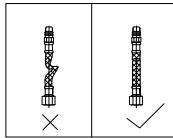


## Installation Notes

1. Before installing the faucet, clean the impurities in the pipeline to avoid blocking the faucet;
2. The faucet has passed the inspection by the manufacturer when leaving the factory. Users are not allowed to disassemble it without authorization;
3. After installation, please check whether each connection part of the faucet has leakage and whether the connection is tight;
4. Please install the filter screen in the water inlet pipe during installation, and the water inlet hose shall not be twisted to avoid affecting the use;
5. When it is used when the environment is lower than 0 °, the water stored in the pipeline and faucet shall be drained to prevent icing;
6. Temperature range of water used: 4 °~70 °



Flushing pipeline



Hose must not be twisted

## Installation Steps:

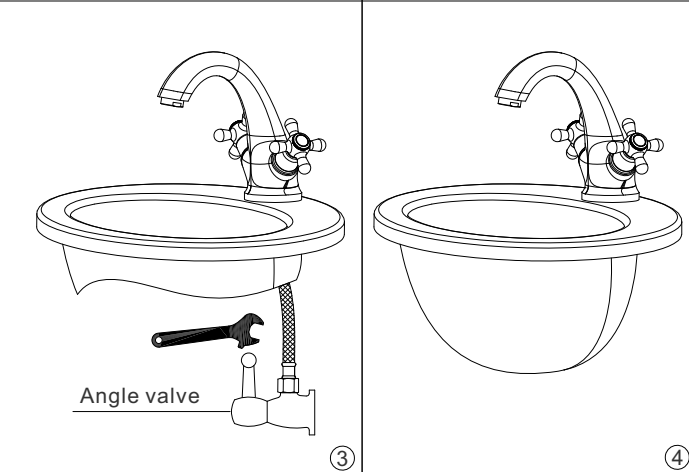
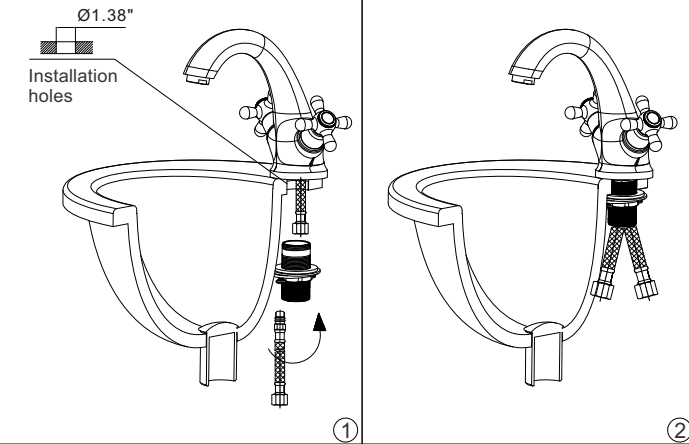
1. Cleaning of water supply pipeline; Before installation, be sure to clean the sundries, sand and other foreign matters in the pipeline to avoid blockage and damage to the faucet; The specific installation method is shown in the figure:

2. As shown in Figure 1: first confirm that there are 35 installation holes, second place the main body on the basin, then install the dental tube as shown by the arrow on the figure, and finally put another hose on it.

3. After installing the hose, as shown in Figure 2.

4. As shown in Figure 3: screw the braided hose onto the angle valve and tighten it with a wrench.

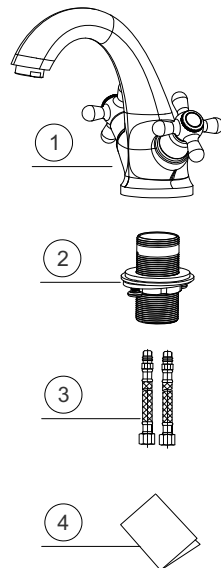
6. After installation, test the water and check whether all connecting parts are sealed.



## Installation Instructions

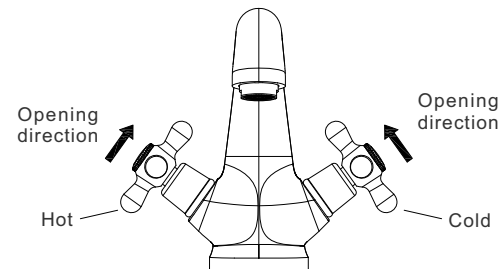
List of standard accessories:

No	Parts Name	Amount
1	Faucet body	1
2	Dental tubes	1
3	Supply hose	2
4	Installation instructions	1



## Instructions

1. Turn the hot and cold hand wheel inward to open, and the maximum opening angle is 90 degrees.



2. Schematic diagram of disassembly and replacement of hot and cold handwheel.

