

User Manual
Floor Lamp

Introduction

Thank you for purchasing our floor lamp. Please read the following instructions carefully before use.

Product Features

- 1. With a traditional foot switch, both children and adults can easily switch the lights;
- 2. The lamp is equipped with a remote control, you can control the light switch, brightness and color temperature through the remote control conveniently;
- 3. Our remote control has the code matching function, which allows you to control several lights with one remote control in different scenes;

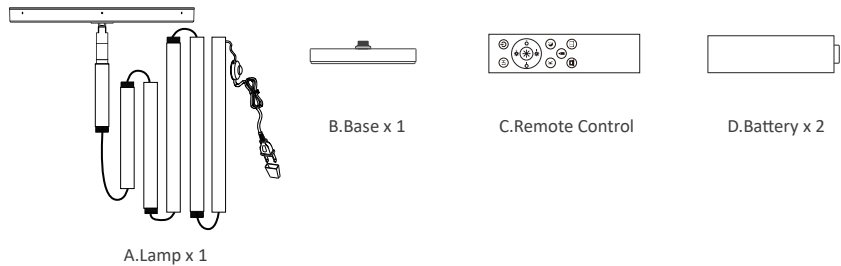
Parameter

Lamp	
Model	FLD-032-XR
Input Voltage	AC120V 60HZ
Material	Iron+PC
Dimmable	Yes
Switch	Foot switch+Remote control
Power	32W
Brightness	3000lm
CCT	3000K-6000K
Dimension	ø25*175cm

Cautions

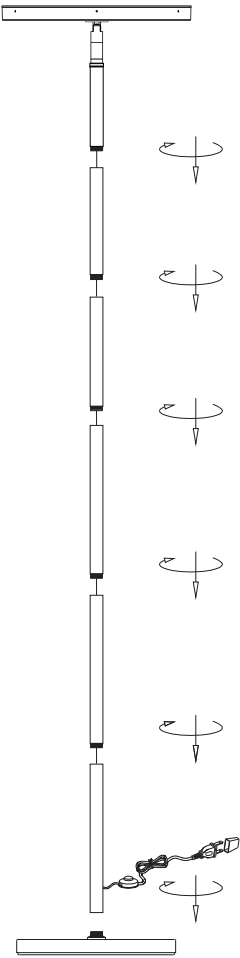
- 1.If the remote control can't control the lamp, please try to match the codes. If you still can't control the lamp after the code is matched , please contact us as soon as possible;
- 2. Please make sure that the voltage is 100-120V , which is standard for US . This product can only be used between 100-120V.
- 3. Unplug before cleaning.

Package List



Assembling

- Step 1: Connect the tube to the lamp head by clockwise.
 - Step 2: Connect the tube to the other tubes by clockwise.
 - Step 3: Finally connect the tube to the lampbase by clockwise
- After the installation is finished



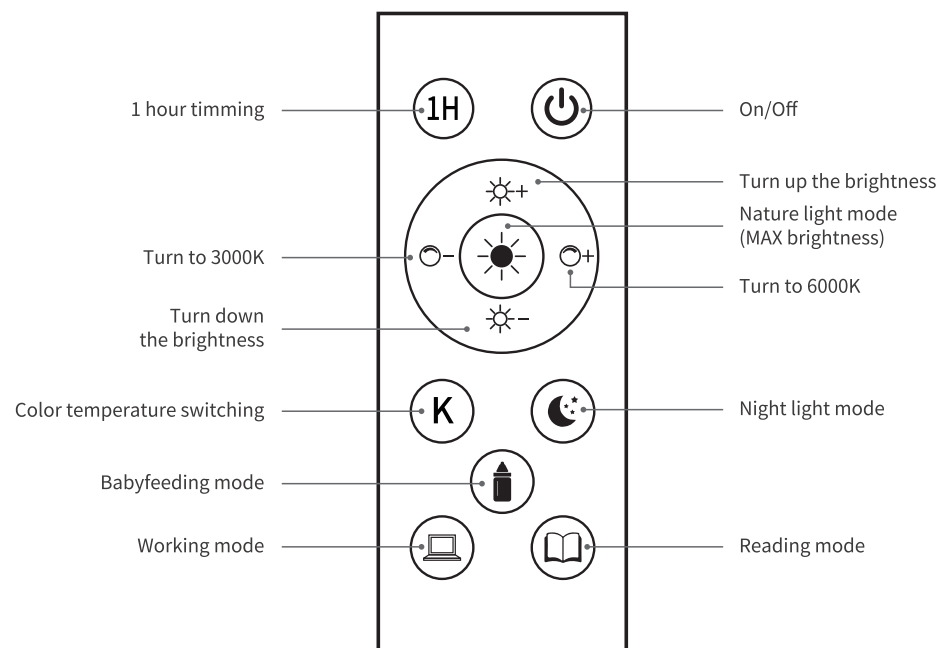
Usage

On/Off: ①Step on the foot switch.

②Press switch button on the remote control .

CCT: Press the color temperature +/- button, short press is for grading dimming, long press is for stepless dimming.

Brightness: Press the brightness +/- button, short press is for grading dimming, long press is for stepless dimming.



Matching

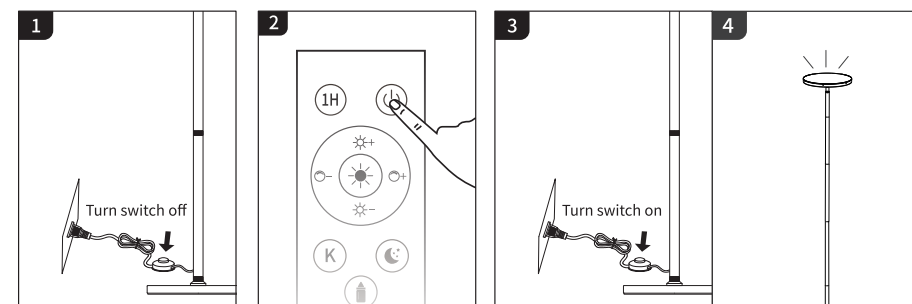
Make sure the remote control matches well with the lamp :

Plug the adapter to the power supply and use the remote to control the lamp. Usually the remote controls the lamp perfectly.

If the remote control doesn't work for the lamp, please re-match them.

Matching process:

1. Disconnect the power supply for more than 10 seconds.
2. Connect the power supply.
3. Press the power button on the remote and hold on within 5s after powering on.
4. When the light flashes, it matched successfully.



Decoding process :

Connect and disconnect the power supply 5 times. When the main light flashes, it means decode successfully.

