



Bicycle pet trailer  
Instruction Book

5663-1289 1290 1291 D00-051  
EN C000000



a trailer at night. Because your vehicle is longer and heavier you will be less able to react to unseen hazards. If you must ride at night, wear bright, reflective clothing. Use a bright headlight and a red blinking taillight on your bike. Similarly, put a red blinking light in the light-holder tab sewn onto the back of your cover, so you can be more easily seen.

Proper Wheels And Tires Are Essential

Use only the factory-supplied wheels, and keep them properly maintained. Check pressure before each use. Do not use high-pressure tires, as the trailer will be bouncy and prone to tip over with light loads.

Use Your Flag

Always use the safety flag ---it's an essential safety device. The moving flag will help make you more visible to motorists and other cyclists.

Follow The Rules Of The Road

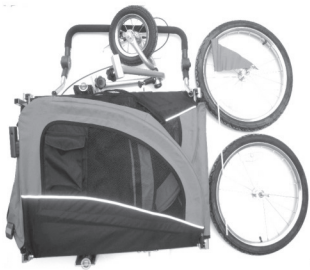
Bicycles are vehicles, and are required to observe all rules of the road. Always signal turns and stops; ride with both hands on the handlebars. Scan ahead for dangerous situations, and anticipate turning traffic. Never ride against oncoming traffic. If you can not aware of your local and state bicycle regulations, contact your nearby police or motor-vehicles office for more informations.

Pet trailer-User Manual

Congratulations to the purchase of high quality pet trailer. For safety reasons we suggest you to study this manual carefully.

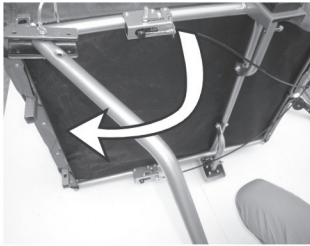
All parts

Body frame and handle	1pc
front wheel	1pc
rear wheel	2pcs
safety flag	1pcs



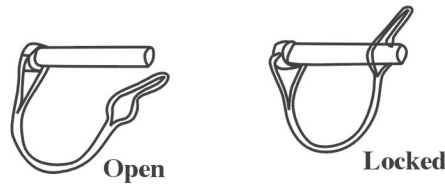
Step 1

Turn the still folded trailer around. Turn over the towing bar to be forward insert the safety lock to fix it.



Step 2

Pull up with hard the middle supporting bar to the plastic part (refer to the picture). Then, insert the safety lock and make sure the safety lock is enclosed.



Step 3

Insert the push handle into the socket holder at the back of the pet trailer. Press down the metal pins and make sure they slide into the holes properly.



Step 4

Press down the wheel lock, and insert the wheel axle into the bottom tube of the trailer. Then release the wheel lock and make sure the wheel is fixed strongly.



Fit, Alert, Adult pilot

To safely pull a trailer, you need to be a fit, experienced cyclist. You must be alert, have good sight and hearing, and adequate strength in your legs, arms, and hands. Never allow a child or adolescent to use your trailer because it is likely that they lack the necessary physical ability and judgement.

No Headphones Or Other Distraction

Do not cycle or stroll with headphones, radios, or other distractions. You must be able to hear surrounding traffic and concentrate on safe cycling at all times.

No Motorized Vehicles

Your trailer is only intended for use with pedal-powered bicycle. Never pull it with a motorized vehicle, as the increased acceleration and speed could damage the trailer or cause the trailer to tip over.

Rider On Clean, Paved Surfaces

Your trailer is not intended for off-road use. Any bumps or irregularities could cause tip over and serious injury. Besides, be especially careful in wet, rainy, or freezing conditions. Please use your brakes periodically, but avoid forceful braking which can cause dangerous. Ride slowly when starting, stopping, and turning. Do not ride on surfaces where sand, gravel, ice, oil, or other slippery substances are present. If you must pass over slippery surfaces, walk your bike and trailer.

Avoid Riding At Night

Make every effort to schedule your rides so you are not pulling

Starting and Stopping

Because of the trailer's additional weight, a bicycle pulling a trailer will be slower to start up and stop, and because of its length it requires more time to cross streets or paths. This means you should think further ahead in anticipating stops, turns, and starts. Besides, bicycle trailers can tip over. To avoid overturning, do not hit the trailer to the obstructions in the road. Do not travel faster than 15M.P.H. Under any circumstances for all road irregularities and your slowness to react are greatly magnified.

## WARNING

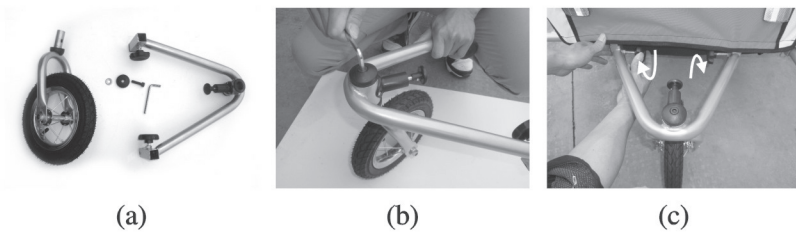
Trailers can tip over causing damage to trailer and serious injury. **AVOID** causes of tip over, especially

- Hitting road obstructions
- Taking turns too fast
- Sudden swerving
- Off-banked turns
- Improper wheel installation
- Improper tire inflation

Step 5

Now will show you how to assembling the front wheel. 1. please assembling the front wheel firstly.

A

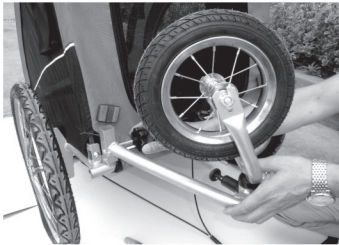


B. Black knob can control the wheel condition (lock or unlock)

Pull out and turn the black knob, the wheel position can be controlled. When the mark "LOCK" is on top, the wheel can be used as unilateralism wheel. When the mark "UNLOCK" is on top, so the wheel can be used as universal wheel.



C. When the trailer is used to connect with bicycle, you can put the front wheel at the back



2. The handle can be designed to adjust the height. Press the button by hand, so the handle height can be adjusted

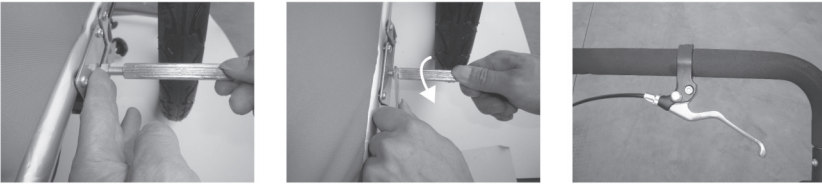


Assembling the front wheel into the trailer body and tighten the two screws.



Step 6

3. The trailer can be with a wheel brake. Turn the side screw tightly, also tighten the 6-sided nut with tools. The brake on the handle can control the wheel brake. When you close the brake on the handle bar and press down the screw, so the trailer can not go forward.



Step 7

How to connect to the different bike. Connecting to the bicycle with axle



Connecting to the bicycle with quick release



Please keep the manual so it can help you with eventual problems.

Please pay attention to the security notes below!

1. Maximum total load: 30KG
2. Do not technically modify the trailer
3. Do not attach additional loads
4. Maximum allowed speed of the trailer: max. 16km/h
5. Do not use the trailer on rocky roads or other dangerous roads
6. Rider should wear approved safety helmets
7. Please assemble the trailer strictly according to these instructions
8. Never park the trailer near a dangerous road
9. Check the air pressure before every trip
10. Always check the proper connection of the coupling
11. Be careful whilst riding in traffic especially turns and slopes
12. Always check all parts of the trailer are connected properly and tightly

Fabric Care

Your pet trailer is manufactured from a tough, durable polyester. The fabric is coated for waterproofness. It can be easily cleaned with any mild soap or detergent and warm water. To remove persistent stains, use a nylon bristle brush. When not in use, store your trailer in a dry, well-ventilated area; wipe it dry before storing to help avoid mildew. Polyester fabric will eventually fade, especially when exposed to direct sunlight. To extend the life of your fabric, as well as the hitch and other components, do not store your trailer directly under sunlight. Besides, do not use bleach for cleaning, as it will damage the fabric.