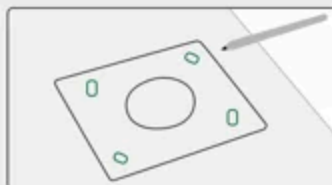


Light Pole Installation Guide

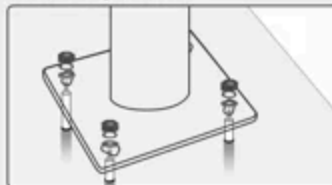
Concrete Floor Installation



1. Use the drilling template to mark the position



2. Dig holes in the concrete slab



3. Insert the expansion screw into the holes



4. Fix the base plate to complete installation

Soft Ground Installation



1. Dig a hole in the ground



2. Place the ground cage into the hole



3. Pour cement and keep the threaded part exposed, Wait to solidify



4. Install the street light pole onto the foundation