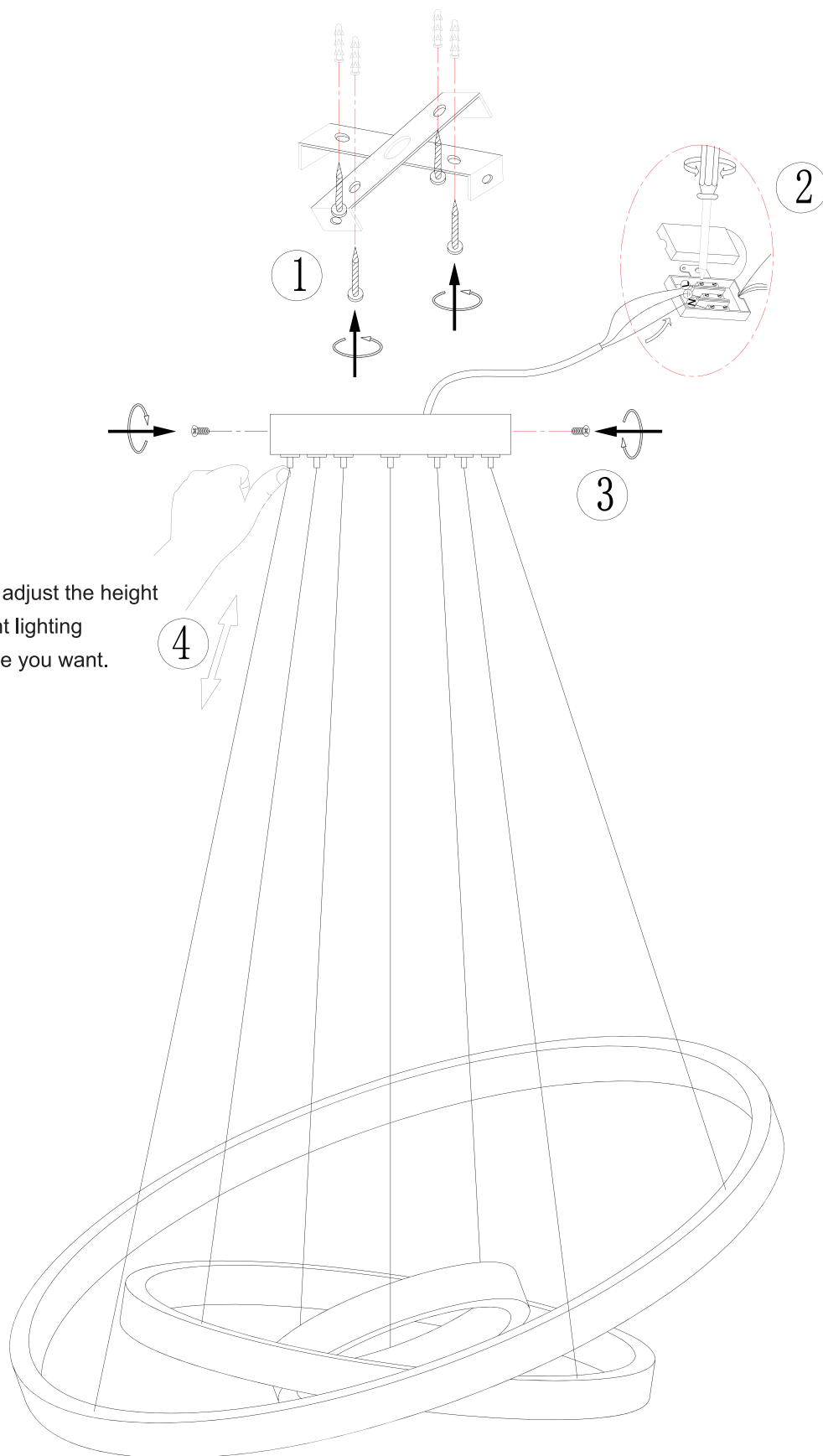


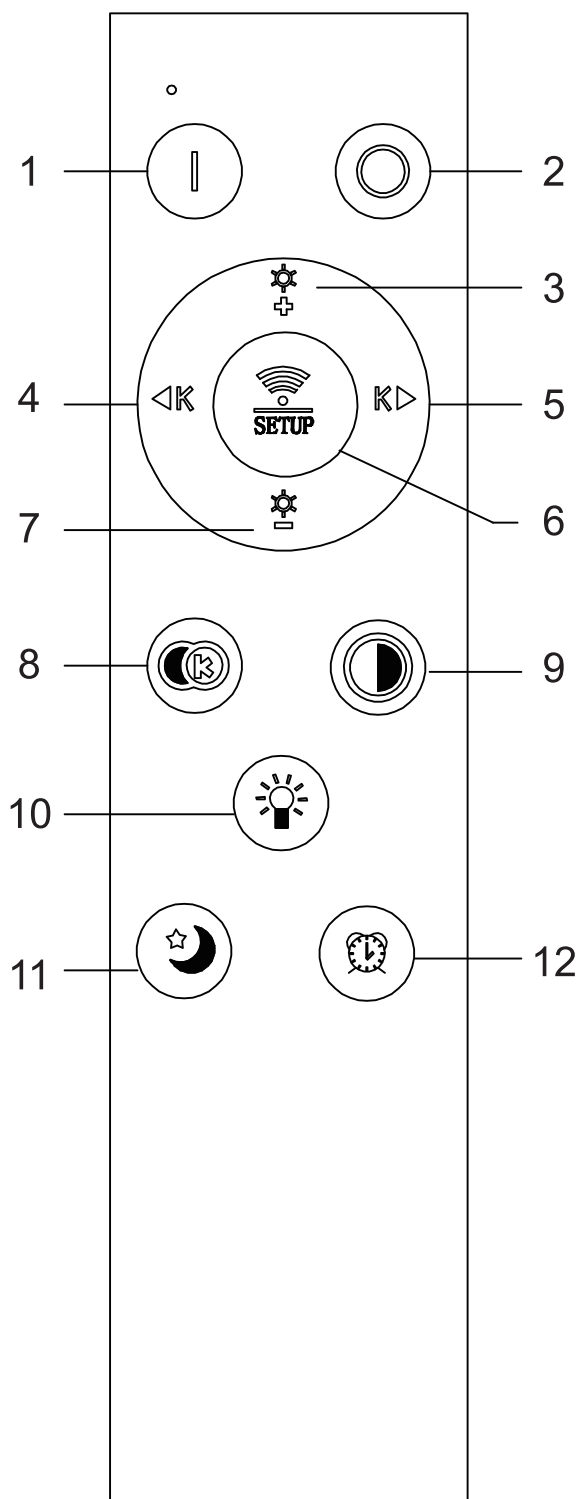
LED PENDENT LIGHT



Press this button can adjust the height
of the pendant lighting
or DIY the shape you want.

Installation


1. Fix the hanging board to the ceiling with screws.
2. Connect wires from the receivers to house supply wires.
3. Tighten the hanging board screws firmly.
4. Adjust the wires.



REMOTE CONTROL

1	I	ON
2	O	OFF
3	⚙️+	Brightness +
4	⬅️K	Color temperature -
5	K➡️	Color temperature +
6	📶 SETUP	Code matching
7	⚙️-	Brightness -
8	⚙️③	3000K/4000K/6000K change in sequence
9	⚙️◐	100% brightness / 50% brightness
10	💡	NO Function
11	🌙	Night light
12	🕒	Timing: Auto turn off after 60 seconds

Code Matching:

Cut off the power, then quickly turn on the power again in 5 seconds.
 When the light is powered on, long press “” within 3 seconds.
 When the light flashes, the code matching is successful.

Code Clearing:

Cut off the power, then quickly turn on the power again in 5 seconds.
 When the light is powered on, long press “ON” within 3 seconds.
 When the light flashes, the code is cleared successfully.