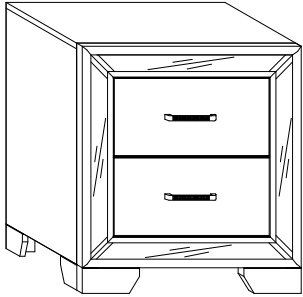


# ASSEMBLY INSTRUCTION

NIGHT STAND / TABLE DE NUIT



Thank you for purchasing this product. Please take time to read and follow the instructions below. Check that you have all parts and hardware before assembly. Parts apparently missing are often found in the packing materials. If you do not have all the parts listed, have your dealer contact us and they will be sent to you immediately.



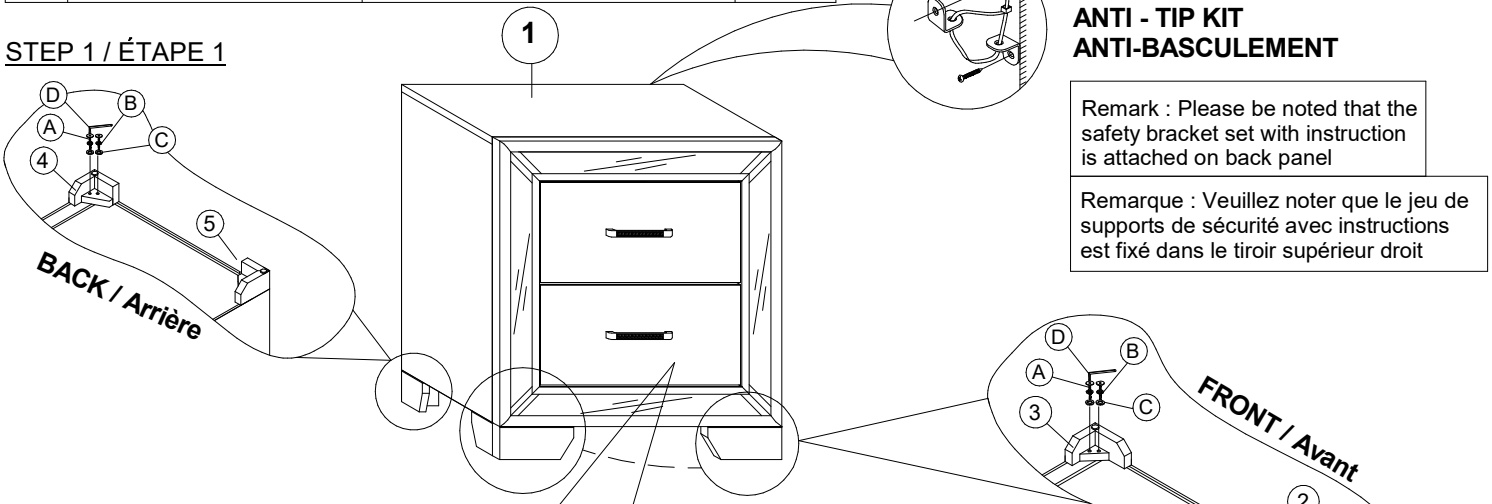
It is recommended to install protective pads under all legs and supports to avoid damage or scratches when placing furniture on a wood floor or other hard surface, and to limit indentation and prevent discoloration if placing on carpet.

PARTS LIST / LISTE DE PIÉCES			
NO/N°	DRAWING/DESSIN	DESCRIPTION	QTY/QTÉ
1		NIGHT STAND / TABLE DE NUIT	1PC
2		FRONT RSF LEG / Pied droite - Avant	1PC
3		FRONT LSF LEG / Pied gauche - Avant	1PC
4		BACK RSB LEG / Pied droite - Arrière	1PC
5		BACK LSB LEG / Pied gauche - Arrière	1PC

PARTS LIST / LISTE DE PIÉCES			
NO/N°	DRAWING/DESSIN	DESCRIPTION	QTY/QTÉ
A		JCBC BOLT 1/4"-20 x 1 1/2" / BOULON 1/4"-20 x 1 1/2"	8PCS
B		SPRING WASHER 1/4" x 1/4" x 1/2" x 0.16" / RONDELLE D'ARRÊT 1/4" x 1/4" x 1/2" x 0.16"	8PCS
C		FLAT WASHER 1/4" x 1/4" x 3/4" x 0.04" / RONDELLE PLATE 1/4" x 1/4" x 3/4" x 0.04"	8PCS
D		ALLEN KEY M4 5/32" / CLE' ALLEN M4 5/32"	1PC

\* Above Hardware Are Packed in 1428BK - 4 / 1428SV - 4

## STEP 1 / ÉTAPE 1

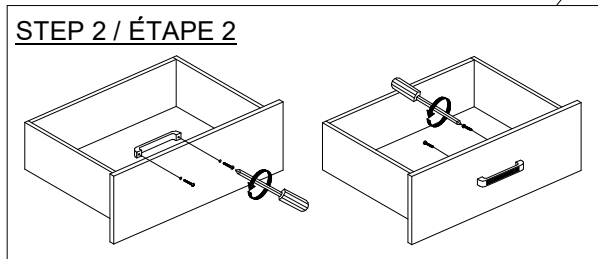


### ANTI - TIP KIT ANTI-BASCULEMENT

Remark : Please be noted that the safety bracket set with instruction is attached on back panel

Remarque : Veuillez noter que le jeu de supports de sécurité avec instructions est fixé dans le tiroir supérieur droit

## STEP 2 / ÉTAPE 2



**ASSEMBLY COMPLETED  
ASSEMBLAGE COMPLÉTÉ**

NOTE : MUST TIGHTEN SCREWS PERIODICALLY WITH USE SCREW WILL BECOME LOOSE CHECK TIGHTNESS OF ALL SCREW EVERY 6-8 WEEKS  
REMARQUE : DOIT SERRER LES VIS PÉRIODIQUÉMENT EN UTILISANT LA VIS DEVIENDRA DESSERRER VÉRIFIER LE SERRAGE DE TOUTES LES VIS  
TOUTES LES 6-8 SEMAINES