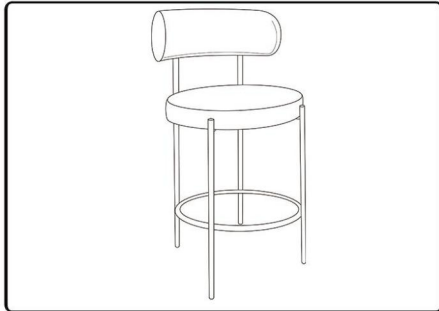


ASSEMBLY INSTRUCTIONS

meridian.
furniture

SKU / ITEM# 877/878



+ Do Not Use Power Tools



+ Suggested Adults



NOTE: For questions about parts or assembly please email support@meridianfurnitureusa.com or call us at 718-758-4455.

- 1 Read instructions cover to cover.
- 2 Save all packaging until assembly is completed.

1 IMPORTANT SAFETY INFORMATION

Do not assemble the product if any of the following parts arrived damaged:

- Part # ① - bracket
- Part # ② - cushion
- Part # ③ - Chair Base

Do not assemble if any of the following Hardware parts are missing:

- Part# A- Flat Washer (ϕ 16* ϕ 6) 4PCS
- Part# B- Bolt (M6*25) 4PCS
- Part# C- Bolt (M6*40) 4PCS
- Part# D- Allen wrench (4mm) 1PC

2 IMPORTANT ASSEMBLY INFORMATION

Assembly Step If loosening persists, please make sure to tighten all the bolts periodically, or use a thread locker adhesive.

+ Parts Included

- ① bracket ② cushion



- ③ Chair Base



+ Hardware Included

Flat Washer (ϕ 16* ϕ 6)

Bolt (M6*25)

A 4PCS

B 4PCS



C Bolt (M6*40)

D Allen wrench (4mm)

4PCS

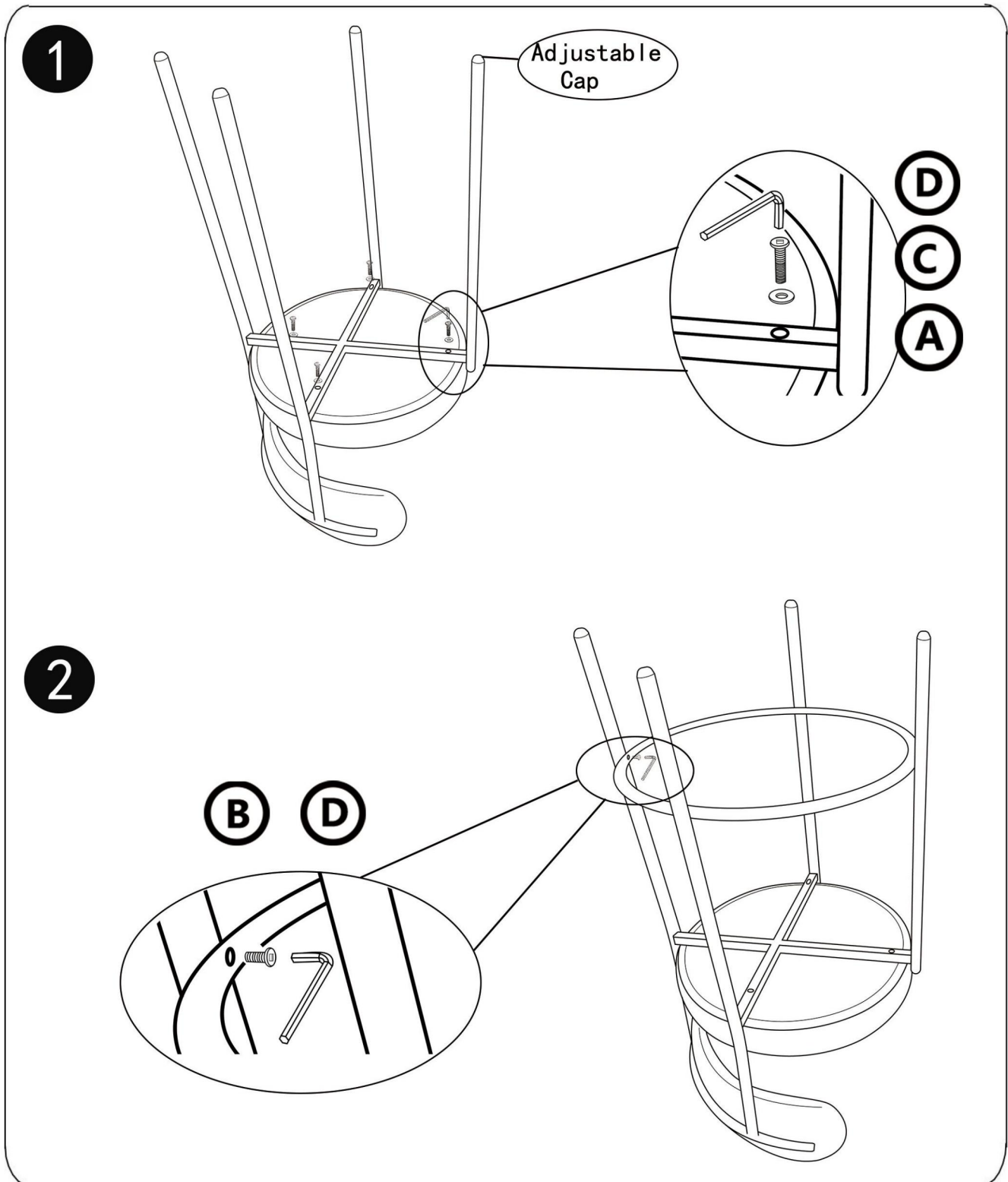
1PC



ASSEMBLY INSTRUCTIONS

meridian.
furniture

SKU / ITEM# 877/878



NOTE: For questions about parts or assembly please email support@meridianfurnitureusa.com or call us at 718-758-4455.

www.MeridianFurnitureUSA.com | support@meridianfurnitureusa.com