



Please pay special attention to these hazard alert boxes, and follow any instructions given. **WARNING** statements alert you to such hazards as fire, electric shock, burns and personal injury. **CAUTION** statements alert you to such hazards as personal injury and/or property damage.

ASSEMBLY INSTRUCTIONS



WARNING

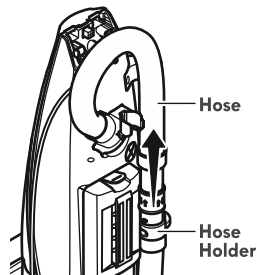
Electrical Shock Hazard

DO NOT plug into the electrical supply until the assembly is complete. Failure to do so could result in electrical shock or injury.

Before assembling the vacuum cleaner, check the **PACKING LIST** (page 2). Use this list to verify that you have received all the components of your new Kenmore Elite vacuum cleaner.

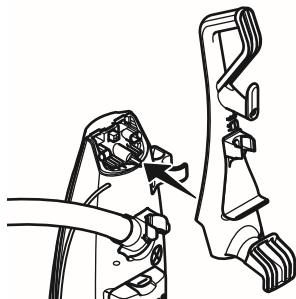
HANDLE

1. Remove the hose from the hose holder.



2. Remove handle screw from vacuum cleaner.

3. Position the handle assembly as shown in the illustration.

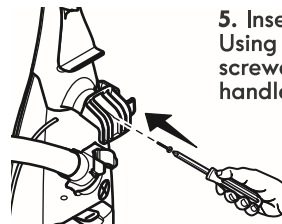


CAUTION

Do not overtighten.

Overtightening could strip the screw holes.

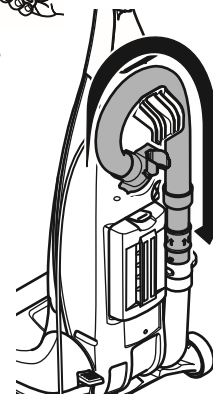
Do not operate the vacuum cleaner without the screw in place.



5. Insert handle screw. Using a Phillips screwdriver, tighten handle screw.

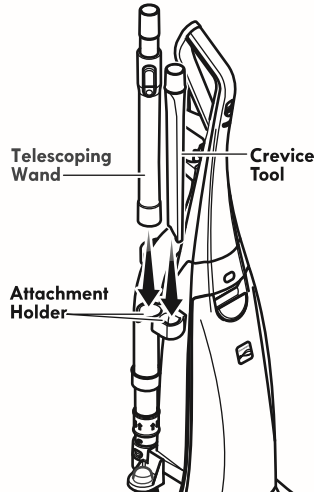
6. Route hose in the hose holders as shown.

7. Place the hose onto the hose holder and press firmly into place.

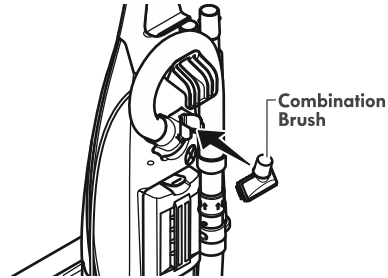


ATTACHMENTS

1. Place the telescoping wand and crevice tool into attachment holder.

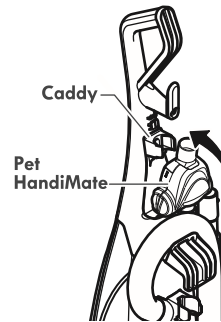


2. Insert the combination brush into the holder on the back of the vacuum cleaner as shown.



3. Place Pet HandiMate® into the storage area.

4. Rotate the Pet HandiMate® back until it snaps into place.



POWER CORD

WARNING

Electrical Shock and Personal Injury Hazard

Wrapping the cord too tightly puts stress on the cord and can cause cord damage. A damaged cord is an electrical shock hazard and could cause personal injury or damage.

NOTE: The hose must be in place before wrapping the power cord.

1. Make sure that cord hook is in upright position as shown.

2. Wrap power cord loosely around cord hook and carrying handle.

3. Lock power cord plug onto the power cord.

