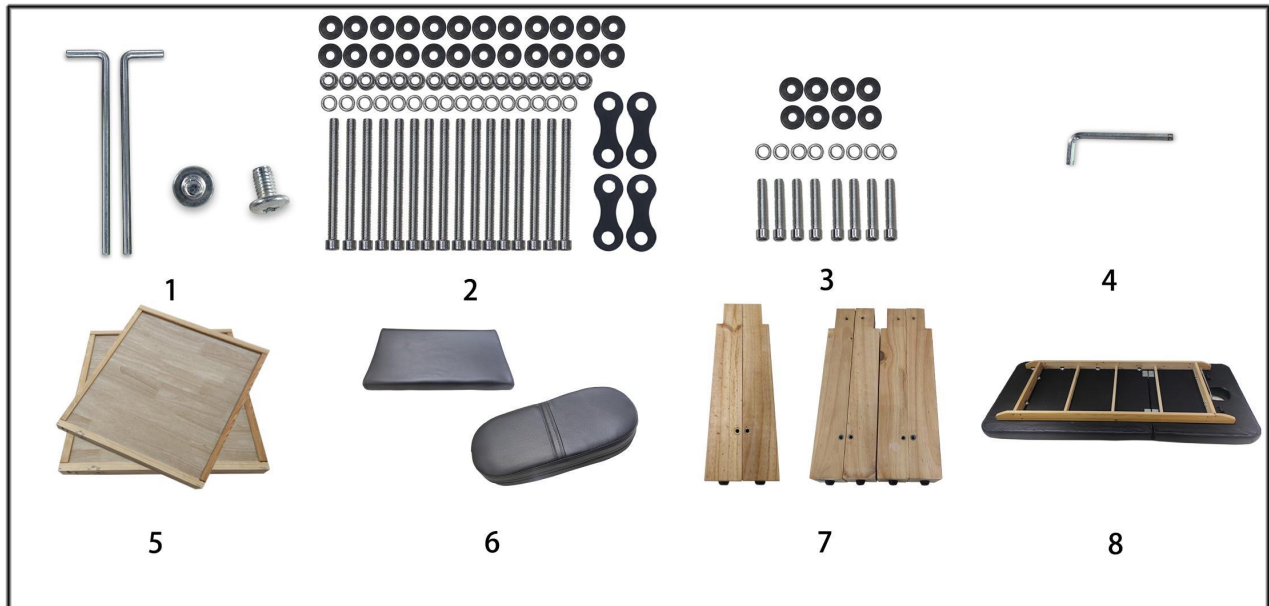


Assembly Instructions for Massage Bed

Parts List



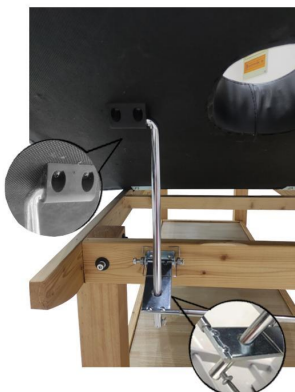
Step 1: Secure bed legs (figure 7) into the bed frame (figure 8) using screws (figure 2) loosely. (Note that the direction of the screw hole for the middle and border bed legs is different).



Step 2: Install the floating shelf (figure 5) using screws (figure 3), tightening the screws using wrench (4).



Step 3: Setup the bed in its upright position, install radius rod (figure 1) to connect bed surface and bed structure.



Step 4: Tighten all bed leg screws using wrench (figure 4), install head rest and chest rest (figure 6).



Recommended maximum load capacity for massage beds: 1000lbs