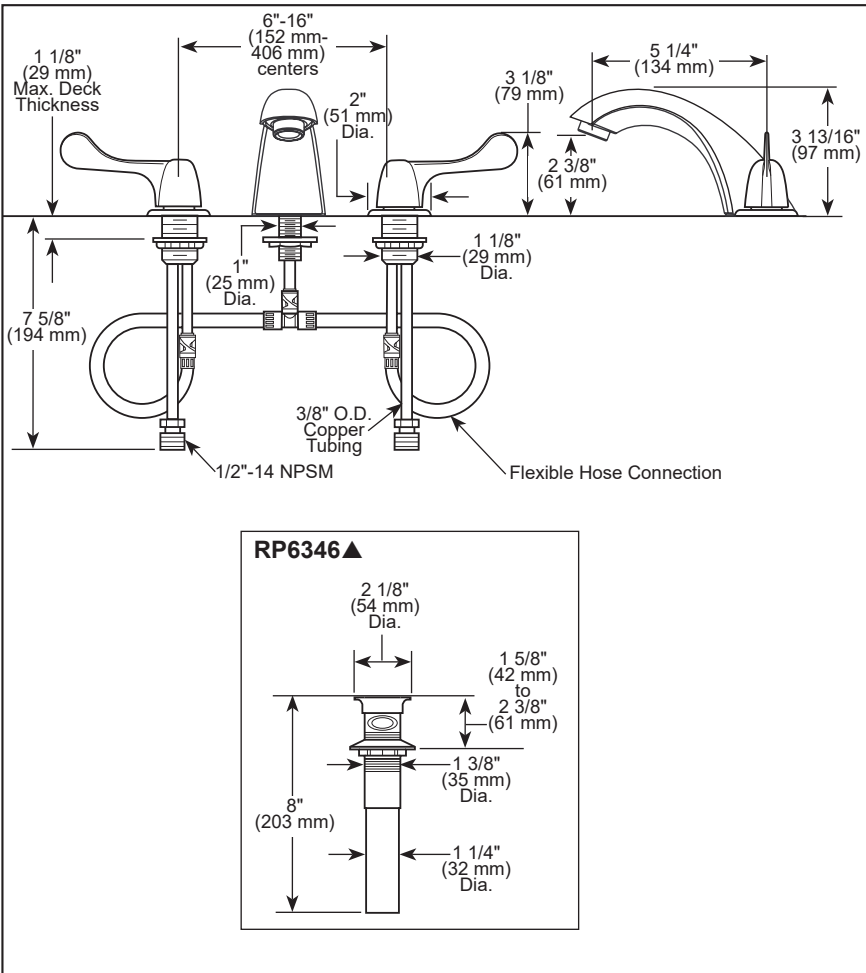


## BATHROOM FAUCETS

### ■ Two Handle Widespread Deck Mount

#### STANDARD SPECIFICATIONS:

- Max flow rate 1.2 gpm @ 60 psi, 4.54 L/min @ 414 kPa
- Three-hole mount
- Solid brass fabricated end valves and spout body
- Vandal resistant metal wrist blade handles. Red/blue colored graphics indicate hot/cold temperature.
- Control mechanism shall be of the rotating cylinder type with stainless steel plate and 1/4 turn stops. Replaceable non-metallic seats operate in stainless steel lined sockets.
- 1/4 turn handle stop
- Models have metal drain with plated grid strainer



#### WARRANTY

- Parts and Finish - Lifetime limited warranty; or for commercial purchasers, 10 years for multi-family residential (apartments and condominiums) and 5 years for all other commercial uses, in each case from the date the product is received by the original purchaser or their authorized representative (installation contractor, etc.).
- Please go to [www.deltafaucet.com](http://www.deltafaucet.com) for the complete details of our limited warranty.



#### COMPLIES WITH:

- ASME A112.18.1 / CSA B125.1
- ASME A112.18.2 / CSA B125.2
- EPA WaterSense®
- ICC/ANSI A117.1