


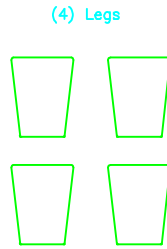
LEG ASSEMBLY INSTRUCTION SHEET

ALLOW 10 MINUTES FOR ASSEMBLY

1

1. Make sure you have the following parts:


A PHILLIPS HEAD
SCREWDRIVER IS
NEEDED FOR ASSEMBLY



(4)
2.5" Bolts

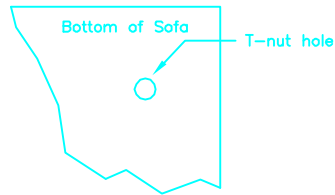


(4)
Washers



2

1. Working on a clean surface, turn the unit on its back with the unit base facing your work area.
2. Locate T-nut hole in frame and insert 2.5" bolt and washer through leg into hole.



3

1. Attach legs placing (4) - 2.5" bolts & washers (1 of each per leg) in t-nuts located on bottom of unit
2. Repeat the above procedures for the remaining legs
3. Turn the unit upright and place in the desired location

