

# Assembly Instructions

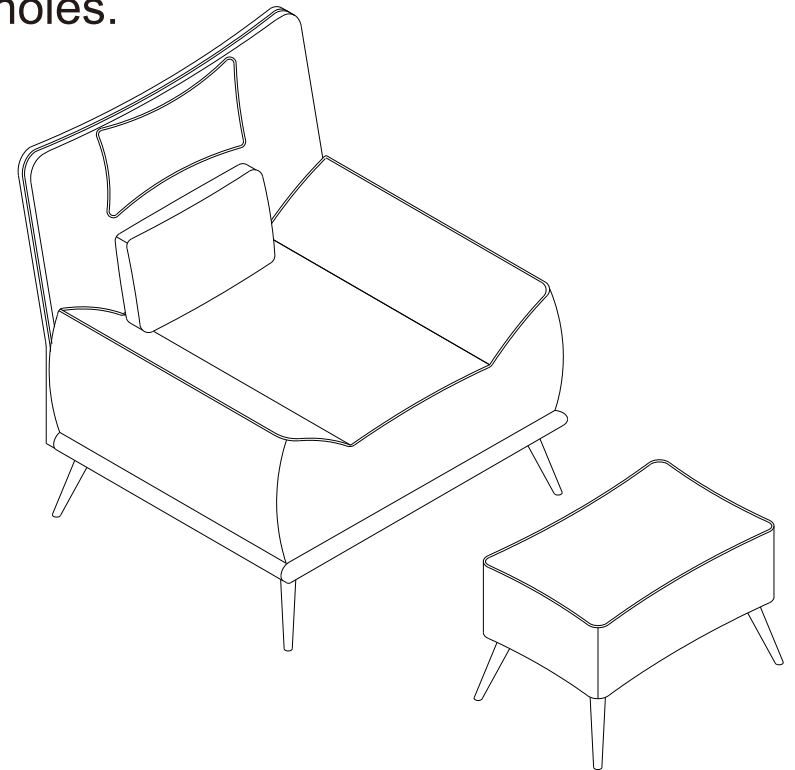
⚠ Before you throw the carton, please ensure that you have all the parts needed for the assembly.

⚠ **Hardware Note:**

1. For each step please don't fully tighten all the screws at first, when they all align to the holes you can fully tighten them.

2. All the bolts should be assembled **vertically** to the holes.

⚠ **Spare parts** can be found in the hardware box if you do not have enough bolts for assembly.



THIS INSTRUCTION BOOKLET CONTAINS IMPORTANT SAFETY INFORMATION. PLEASE READ AND KEEP FOR FUTURE REFERENCE.

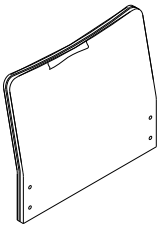
# Assembly Instructions

MADE IN CHINA

## Parts and Hardware

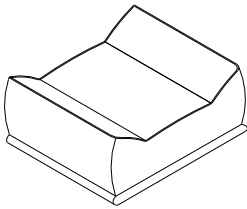
Please check to make sure you have all parts and hardware before starting assembly process

A



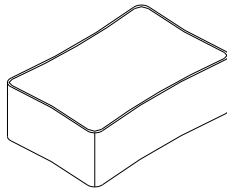
Back 1pc

B



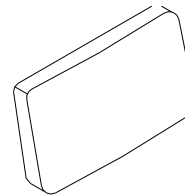
Seat 1pc

C



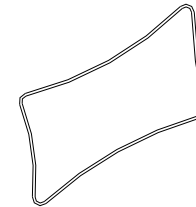
Ottoman 1pc

D



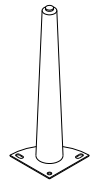
Lower pillow 1pc

E



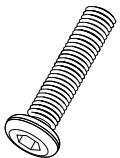
Upper pillow 1pc

F



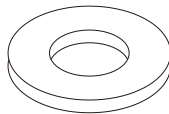
Legs 8pcs

1



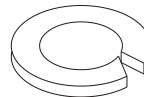
Large bolts  
4pcs

2



Flat washer  
4pcs

3



Spring washer  
4pcs

4



Small bolts  
24pcs

5



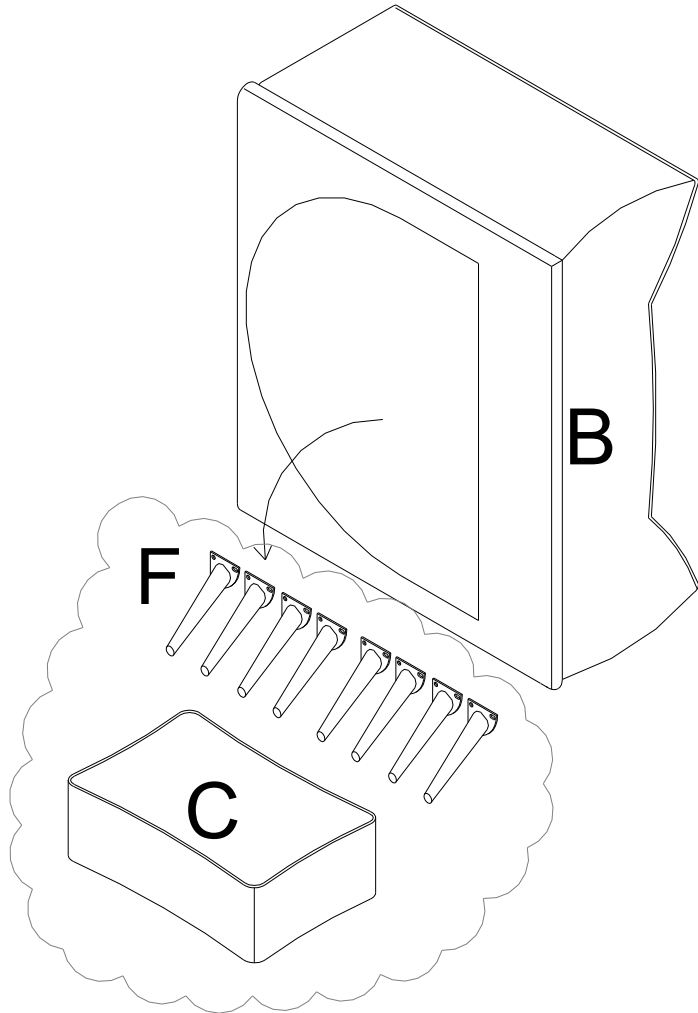
Wrench  
1pc

# Assembly Instructions

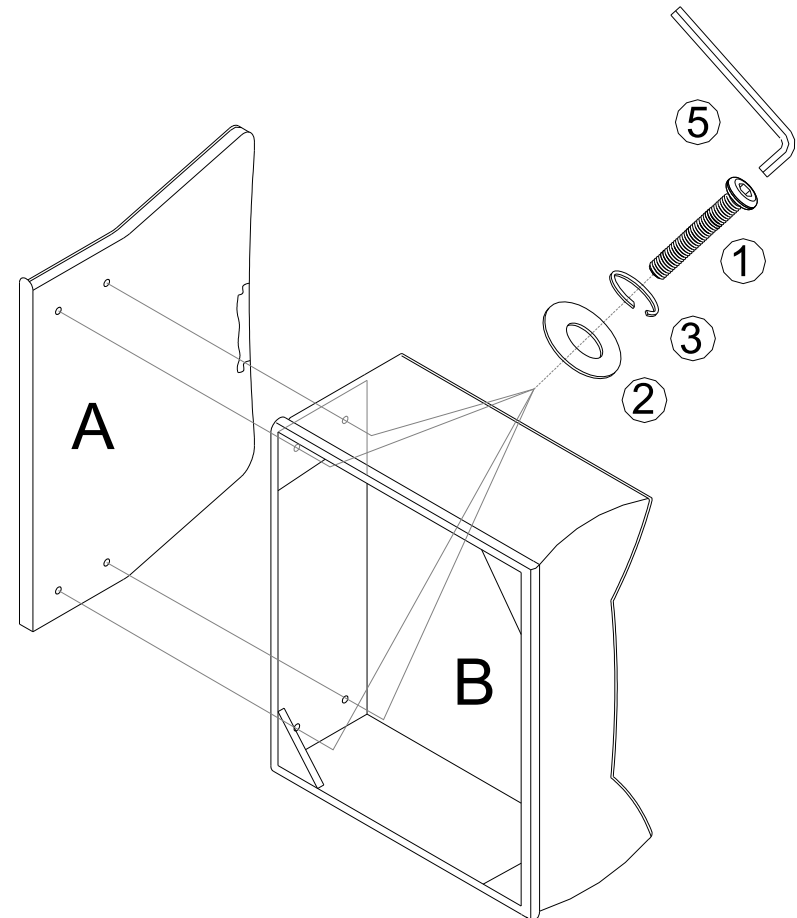
MADE IN CHINA

## Assembly Instructions

Step 1: Take legs and ottoman out from the bottom of seat.



Step 2: Assemble back to seat using large bolts, spring washer and flat washer. Do not fully tighten any single bolt until all of them are align to the holes then fully tighten them by the short side of wrench.

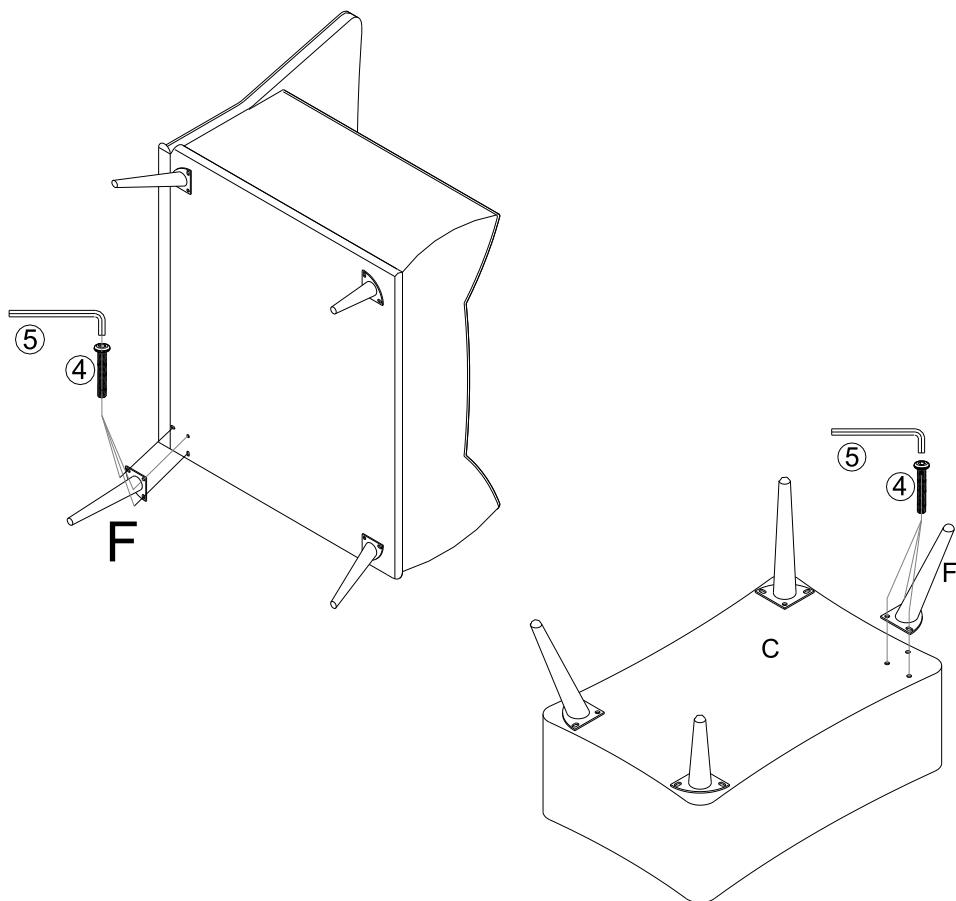


# Assembly Instructions

MADE IN CHINA

## Assembly Instructions

Step 3: Assemble legs to the bottom of seat using small bolt. Half-tighten the bolts one by one until all the bolts are align to the holes then fully tighten them by the short side of wrench.



Step 4: Put upper and lower pillow to back.

