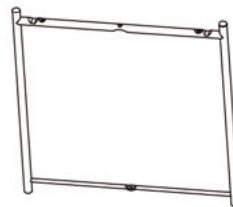


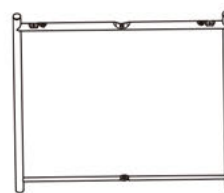
Tray Metal Side Table

Manual Installation Guide

A: 1PCS



B: 1PCS



C: 1PCS



D: 1PCS



E: 4PCS



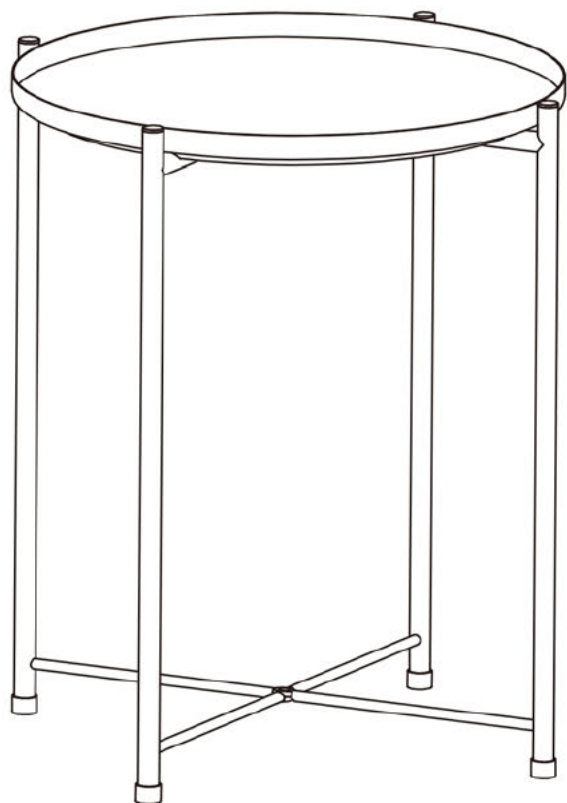
Screws

F: 4PCS

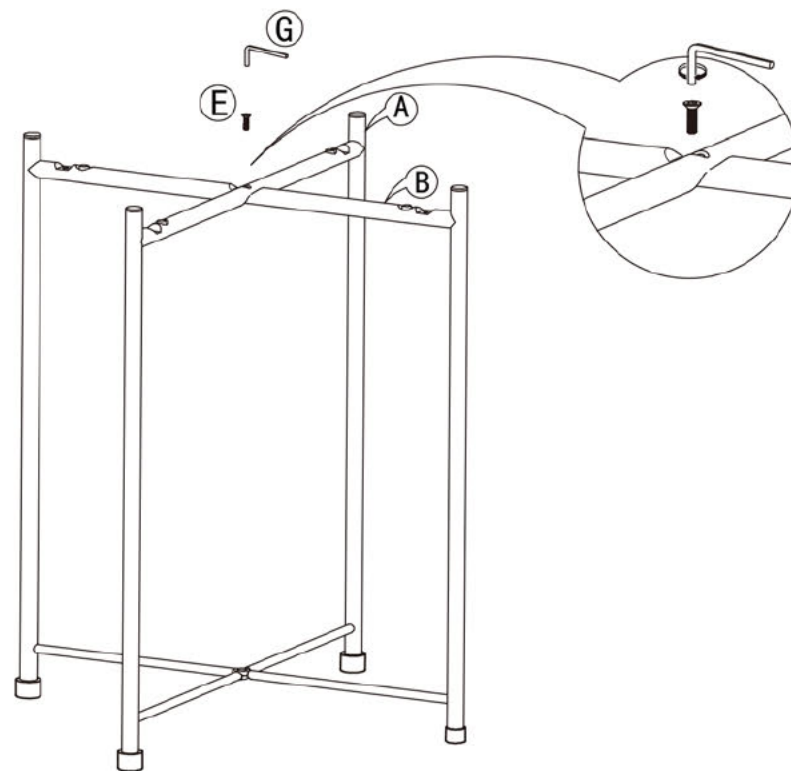


Screws with
plastic caps

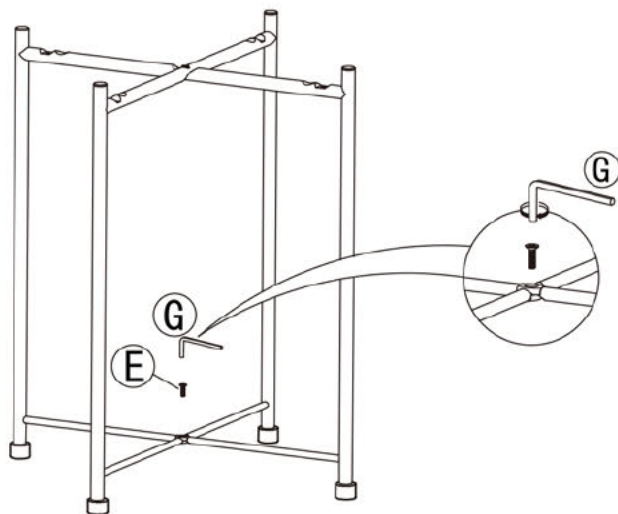
G: 1PCS



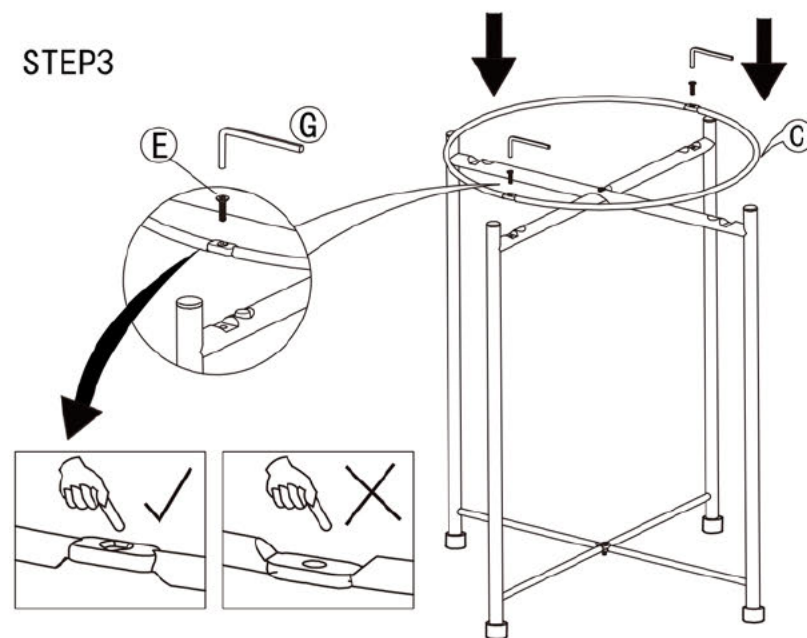
STEP1



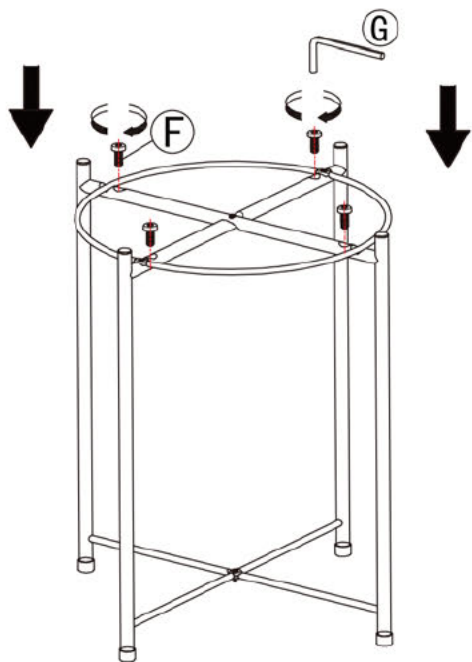
STEP2



STEP3

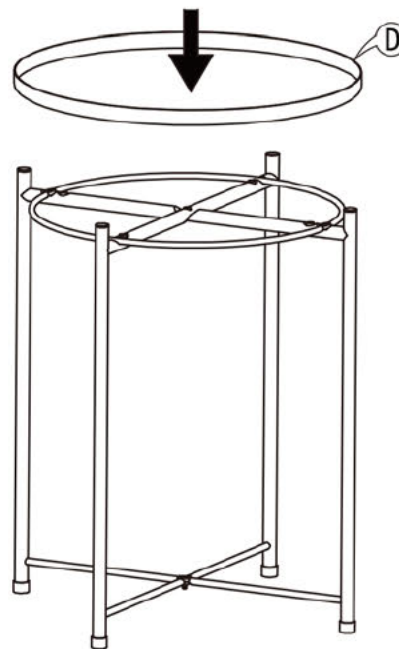


STEP4



Use a hexagonal wrench to rotate the screws with plastic caps into the specified position

STEP5



If the tray is unstable, adjust the screws in the STEP4 with a wrench to stabilize it