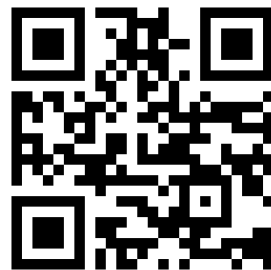


INSTALLATION MANUAL

CEILING FAN WITH LIGHT

Model No.: YY629-01

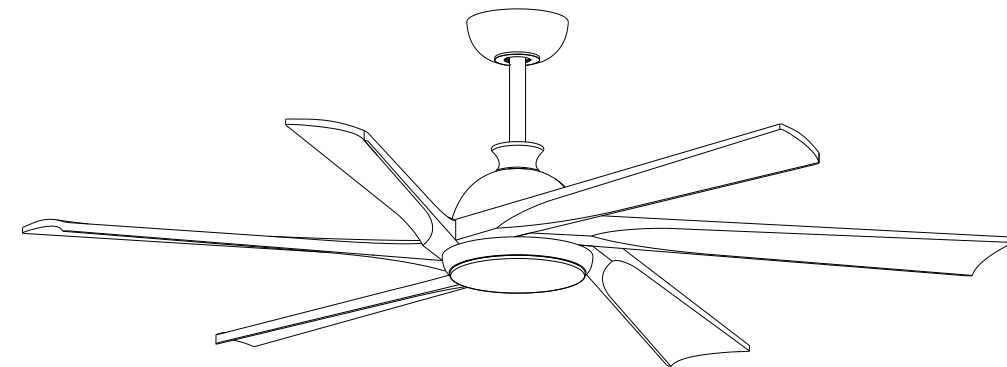


Scan for Installation Video



APP Control Applicable

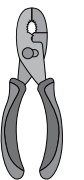
Thank you for choosing and using our product.



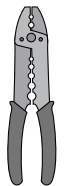
TOOLS REQUIRED



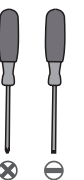
Ladder



Pliers

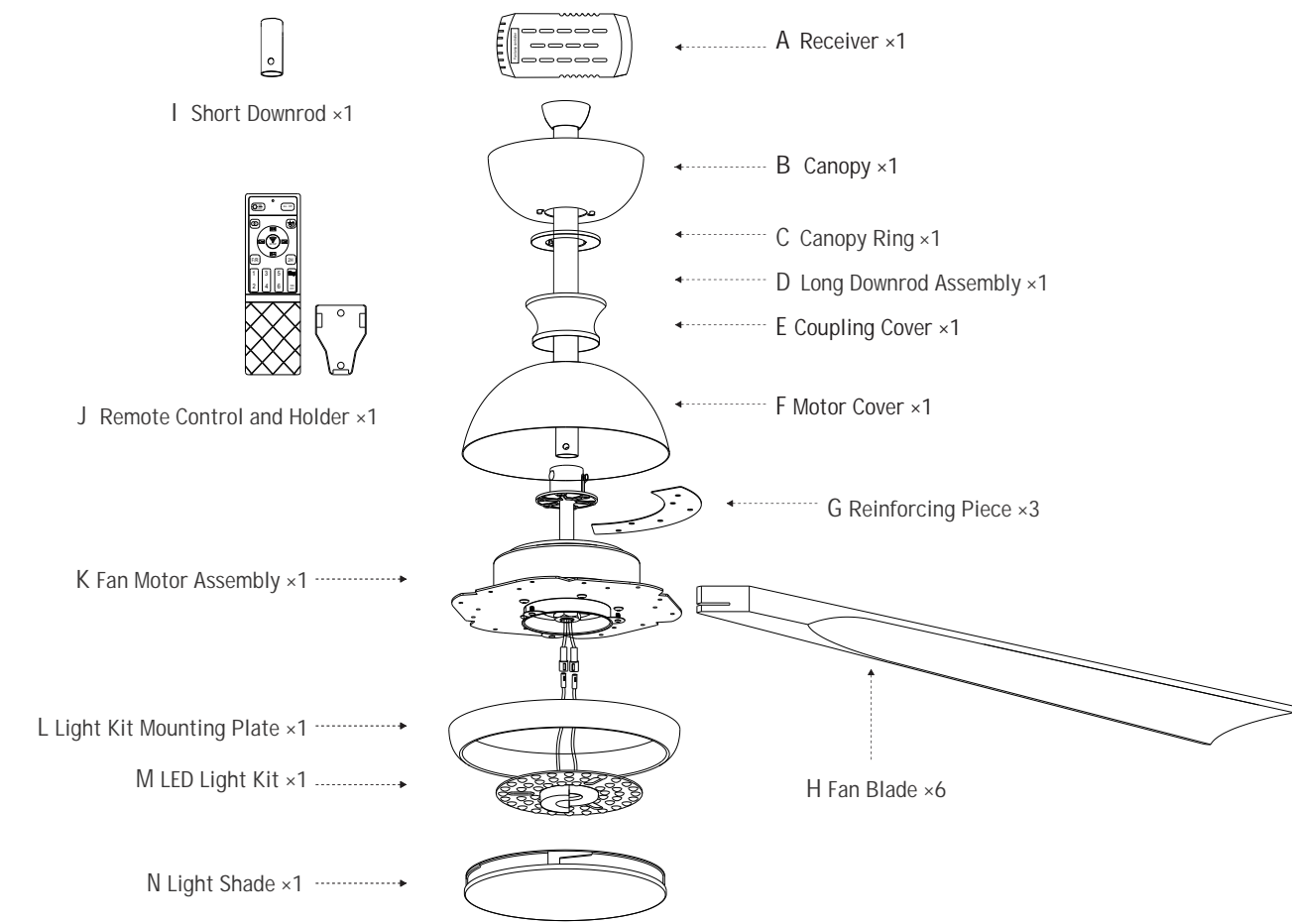


Wire
Strippers

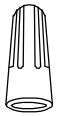


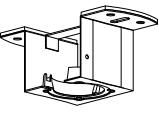

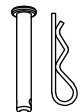


Screwdrivers

PACKING LIST



INSTALLATION KIT

AA  Wire Nut 3×	BB  Outlet Box Screw With Washer 2×	CC  Gloves 1×
DD  Mounting Bracket 1×	EE  Fan Blade Screw 18×	FF  Clevis Pin & "R" Pin 1×

NOTE:

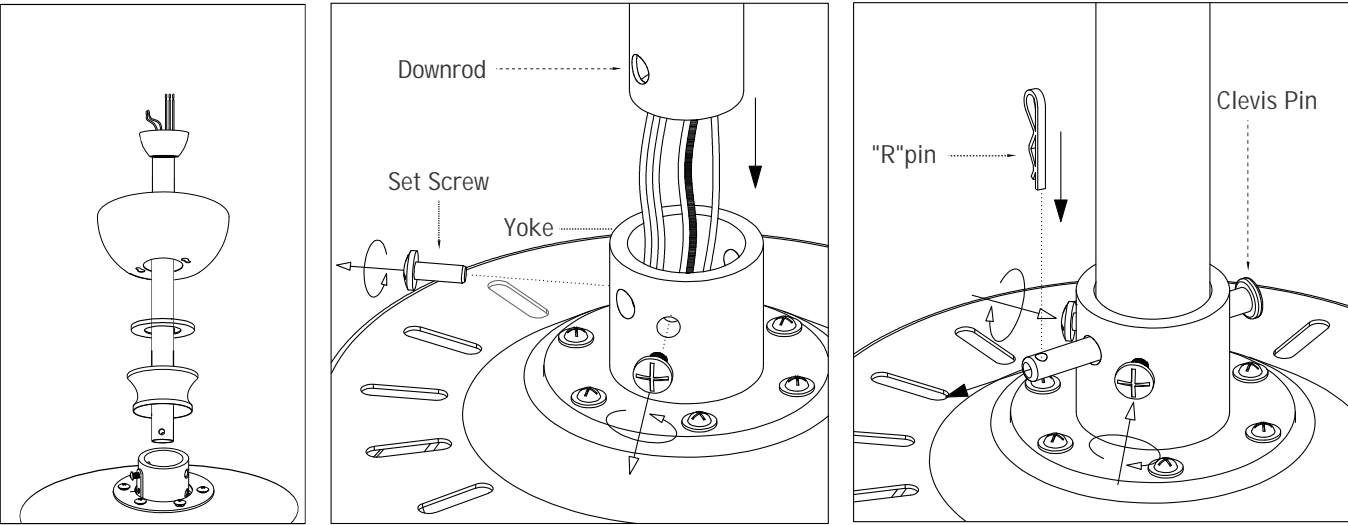
1. Some extra hardware may be included. The quantity listed above is the number required for installation.

2. Parts "DD, FF" have already been installed with Canopy and Long Downrod Assembly. Parts "EE" have already been installed with Fan Motor Assembly. They need to be disassembled before installation.

INSTALLATION

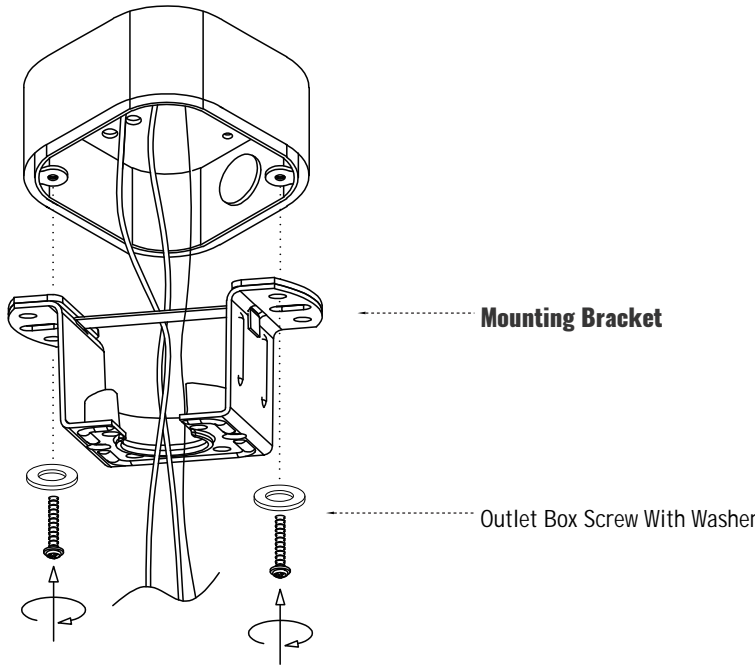
1. Assembling the Fan

- Step 1. Assemble the Canopy, Canopy Ring and Coupling Cover, route wires from the fan through the downrod.
- Step 2. Loosen the set screw from the yoke but do not take off, align the holes at the bottom of the downrod with those in the yoke.
- Step 3. Carefully insert the clevis pin (FF) through the holes in the yoke and downrod (Be careful not to jam the clevis pin against the wires inside the downrod).
- Step 4. Insert the "R" pin (FF) into the end of the clevis pin.
- Step 5. Tighten the set screw on the yoke to secure the downrod.



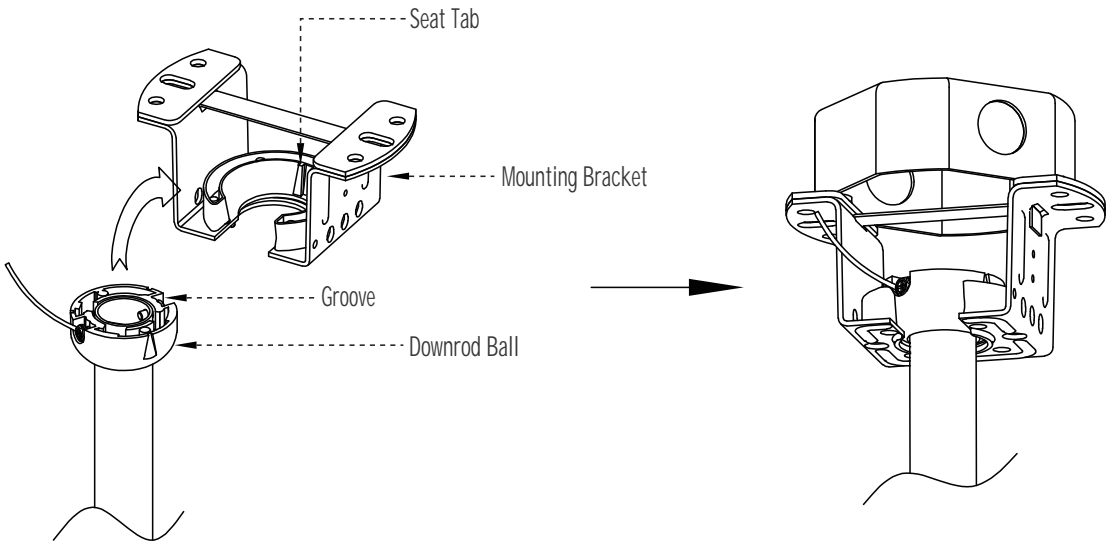
2. Installing the Mounting Bracket

- Step 1. Take off the screws from outlet box.
- Step 2. Secure the Mounting Bracket (DD) onto the outlet box with screws taken off or Outlet Box Screw With Washer (BB) provided.



3. Hanging the Fan

Step 1. Lift the downrod into the Mounting Bracket (DD). Rotate the downrod until the seat tab in the mounting bracket is seated in the groove in the downrod ball.

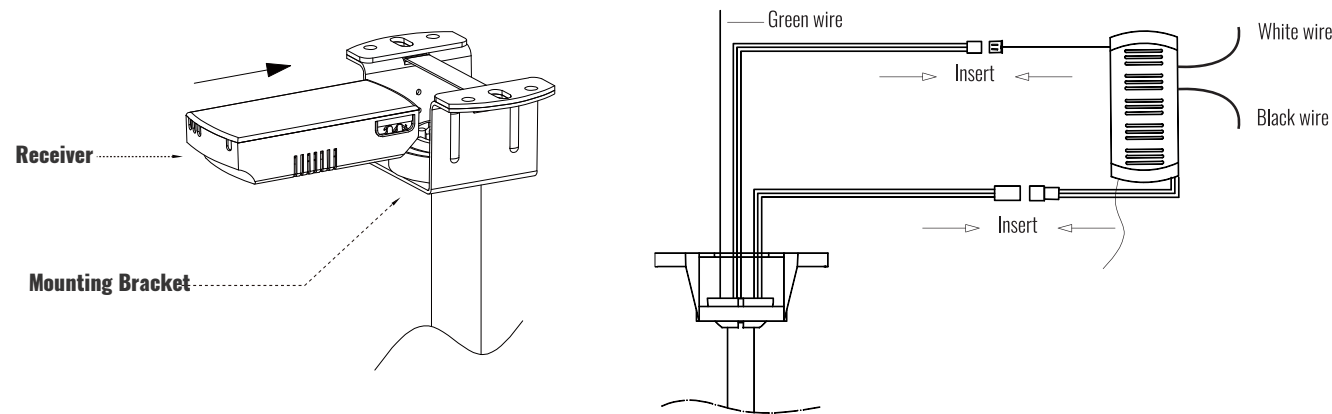


4. Wiring

Step 1. Insert the receiver to the mounting bracket

Step 2. Connect the wires from the fixture to the house supply wires with wire nuts (AA) , ground wire (green, green/yellow, or bare copper) to ground wire, neutral wire (white or blue) to neutral wire, and hot wire (black or brown) to the hot wire.

Step 3. Wrap the connection with electrical tape.



Note:

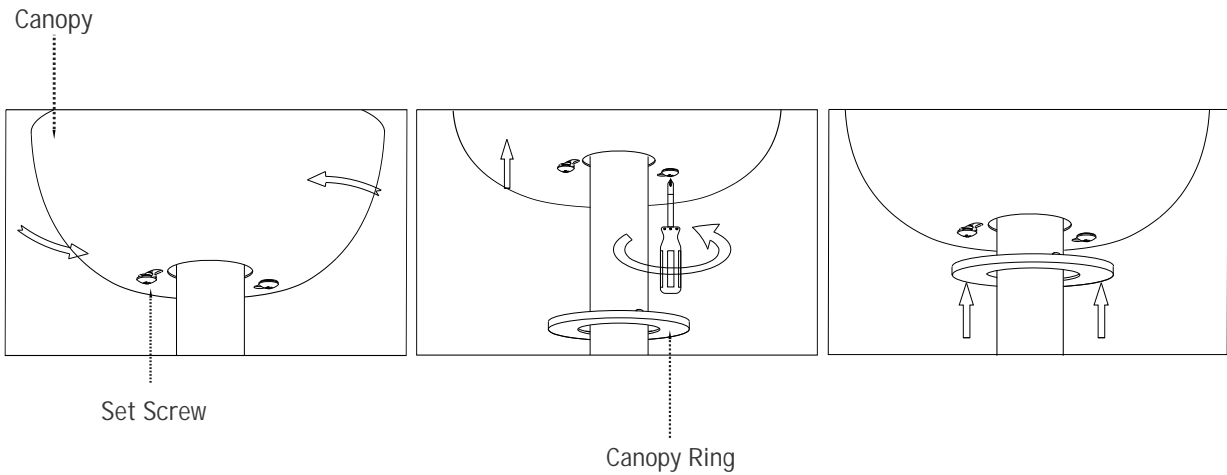
① This fan only needs one set of input wires (black, white, and ground wire). Both of the fan and lights will be controlled by the remote control.

② This fan can only be connected to an on/off switch, not other dimmer switch.

5. Attaching the Canopy

Step 1. Slide the canopy up to the ceiling and attach it to the mounting bracket with the set screws.

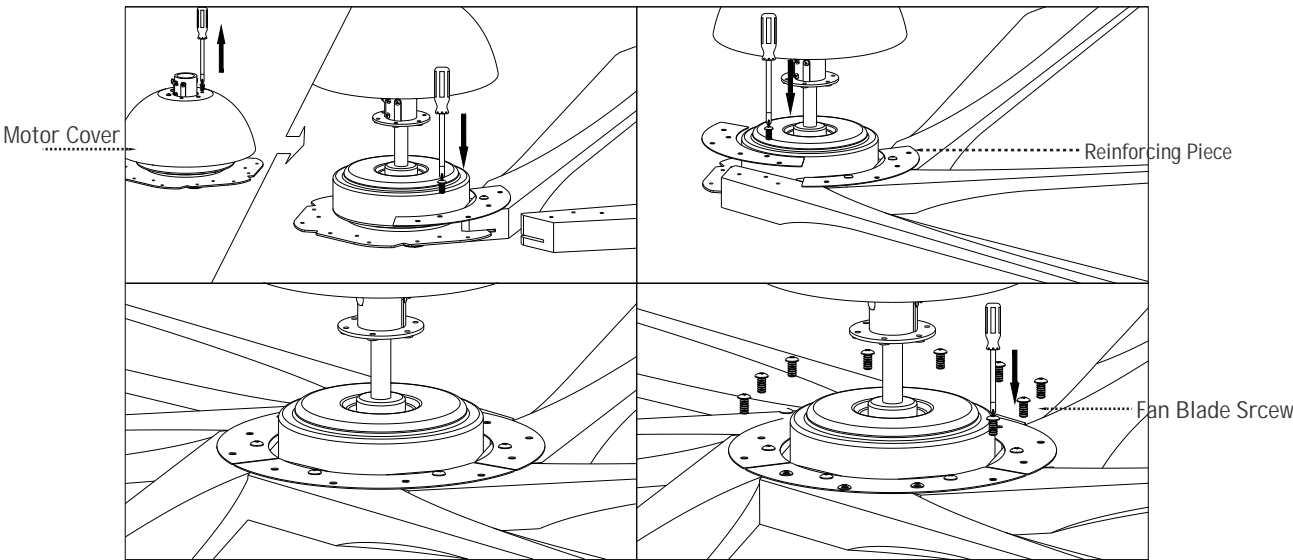
Step 2. Slide the canopy ring up to the canopy.



6. Installing the Fan Blade

Step 1. Loosen the screws on the motor cover and remove the motor cover.

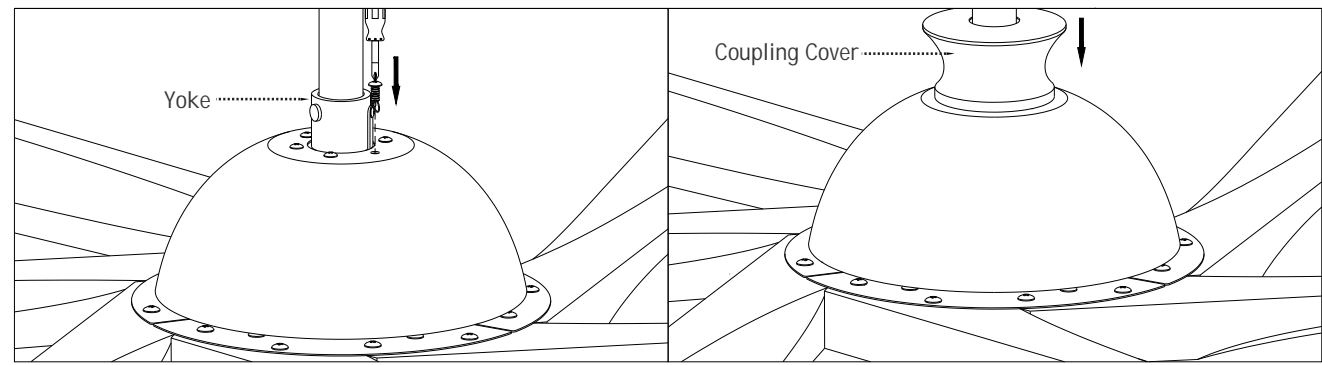
Step 2. Attach the Reinforcing Piece to the fan blade with the fan blade screws.



Note: Make sure to assemble the blades in sequence and fasten the screws with equal force.

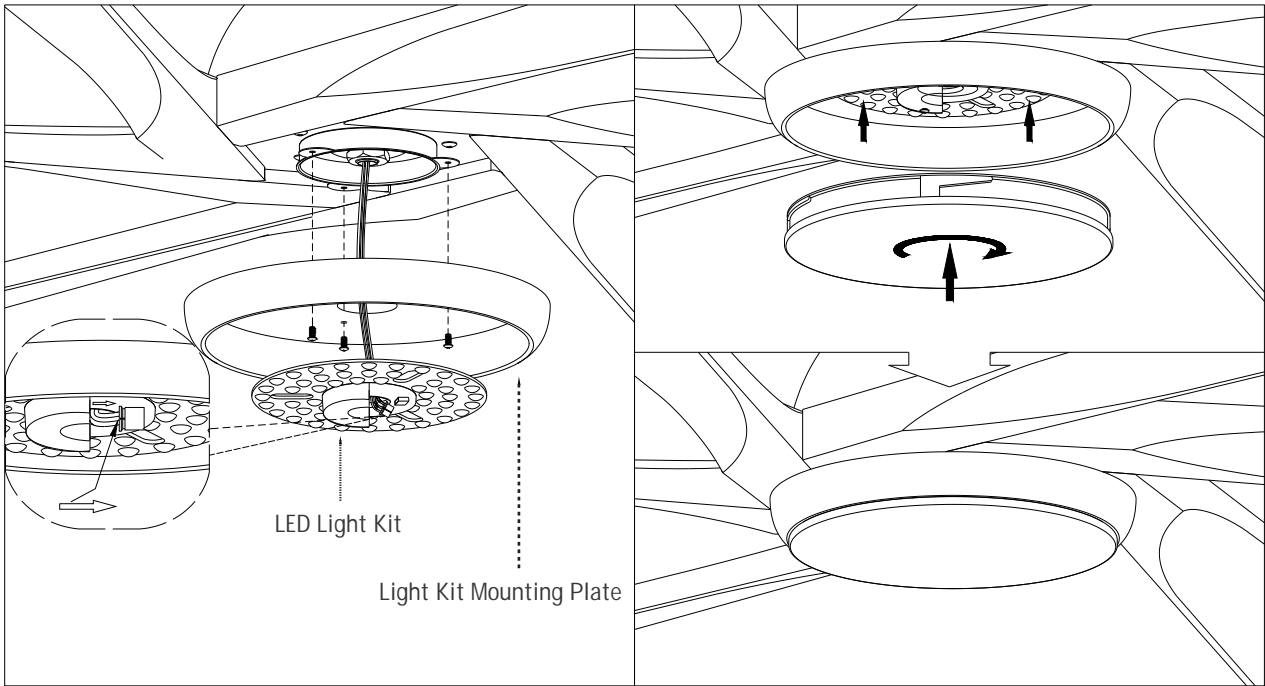
7.Installing the Motor Cover

- Step 1. Secure the motor cover with screws.
- Step 1. Slide the coupling cover downward to cover the yoke.



8. Install the Light and Light Shade

- Step 1. Fix the light kit mounting plate on the lamp body with screws (Assembled with Fan Motor).
- Step 2. Connect the wire terminal to the interface on the LED Light Kit.
- Step 3. Rotate the lampshade clockwise to secure it to the lamp panel.

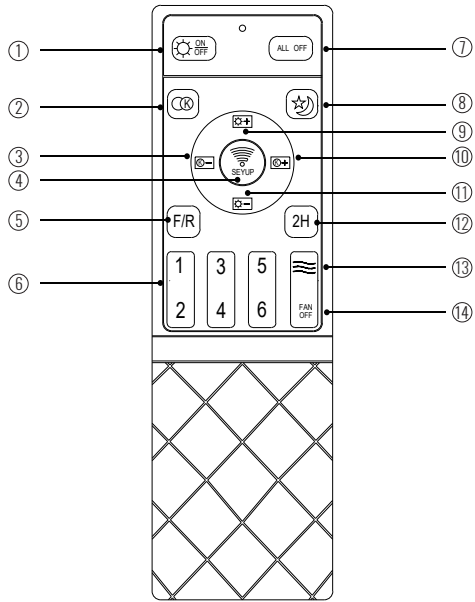


REMOTE CONTROL INSTRUCTIONS

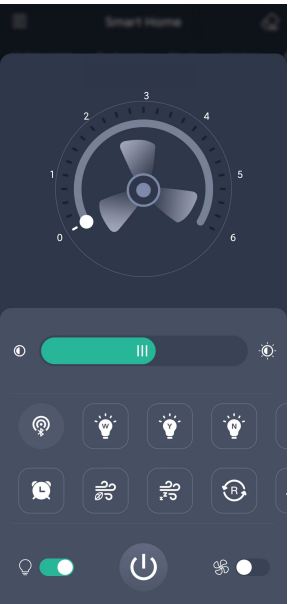
NOTE:
Please insert 2 batteries before using. AAA 1.5V battery x 2pcs (not included).

- ① Light On/Off: Press to turn the light on or off.
- ② Quick Light Color Switch: Press to quickly switch between light colors.
- ⑨⑪ Light Brightness +/-: Press to +/- the brightness of the light.
- ③⑩ Light Color Temperature +/-: Press to +/- the light color temperature.
- ⑤ Fan Forward/Reverse: Press to change the direction of the fan blades.
- ⑥ Fan Speeds: Press to adjust the fan speed from 1 to 6.
- ⑦ All Off: Press to turn off the fan and light.
- ⑧ Night Mode: Press to dim the lights.
- ⑫ Fan Timer: Press to set the timer for the fan to turn off.
- ⑬ Wind Direction: Turn on natural wind mode.
- ⑭ Fan Off: Press to turn off the fan.

Signal Pairing: If the remote control loses signal from the fan, press and hold the Signal Pairing button ④ at the beginning after turning on the wall switch until the light flashes. This will pair the remote control to the fan.



APP CONTROL INSTRUCTIONS



Install the "FanLamp Pro" app from Google Play, Apple App Store, or other app stores by scanning the QR code or searching for the app name. Ensure that your phone is connected to the internet and Bluetooth enabled.	
	Pairing: Click the Pair button within 5 seconds after turning on the fan from the wall switch. Once the fan flashes or beeps, it has been successfully paired with your phone and can now be controlled through the app.
	Slide the slider to change the fan speed
	Slide to adjust the brightness of the light
	Quickly change color temperature " White, Yellow, Natural "
	Switch to night light mode
	Fan forward & Fan reverse
	Guiding style (not supported by this product)
	Timer
	Natural wind: Simulate natural wind and automatically adjust the wind speed
	Sleeping wind (Not applicable on this fan)
	Turn on/off the light
	Turn on/off the fan

NOTE:
Install the "FanLamp Pro" app from Google Play, Apple App Store, or other app stores by scanning the QR code or searching for the app name. Ensure that your phone is connected to the internet and Bluetooth enabled.